 सत्यमेव जयते	राजस्थान राजपत्र विशेषांक	RAJASTHAN GAZETTE Extraordinary
	साधिकार प्रकाशित	Published by Authority
	फाल्गुन 09, बुधवार, शाके 1945-फरवरी 28, 2024 <i>Phalguna 09 Wednesday, Saka 1945- February 28, 2024</i>	

भाग 4 (ग)

उप-खण्ड(II)

राज्य सरकार तथा अन्य राज्य प्राधिकारियों द्वारा जारी किये गये कानूनी आदेश तथा
अधिसूचनाएं।

Department of Environment and Climate Change
Notification

Jaipur, February 19, 2024

S.O.548 .-Whereas the draft notification of the Chawand wetland, situated in village Chawand, Tehsil Sarada, district Udaipur Rajasthan was published as required by rule 7 of the Wetland (Conservation and Management) Rules, 2017 read with the Environment (Protection) Act, 1986 (Central Act No. 29 of 1986), vide notification number F.No.6(3)Env/2023 dated 30.05.2023 in the Rajasthan Gazette, Extraordinary, Part 4 (ga), sub-part (II) S.O. 84 dated 02.06.2023, inviting objections and suggestions from all persons likely to be affected thereby before expiry of the period of sixty days from the date on which the copies of the said notification were made available to the public.

And whereas, copies of the Gazette in which the said notification was published were made available to the public on the 02.06.2023.

And whereas, no objections and suggestions were received on the said Draft Notification.

And whereas, now the Sarada Tehsil is included in District Salumber.

Now therefore, in exercise of the powers conferred by rule 7 of the Wetland (Conservation and Management) Rules, 2017 read with provisions of the Environment (Protection) Act, 1986 (Central Act No. 29 of 1986), the State Government hereby notifies Chawand wetland, situated in village Chawand, Tehsil Sarada, district Salumber Rajasthan as a wetland and that,-

- (i) the extent of the wetland /wetland complex and its zone of influence shall be as described in Schedule-I of this notification;
- (ii) the activities prohibited within the wetland and its zone of influence shall be as listed in Schedule-II of this notification;
- (iii) the activities regulated within the wetland and its zone of influence, i.e. permitted only with permission of the State Government shall be as listed in Schedule-III of this notification. Request for permission for regulated activities may be made to the District Environment Committee headed by the District Collector; and
- (iv) the State Wetland Authority, Rajasthan shall monitor the enforcement of

the provisions of this notification.

Schedule-I
Chawand Talab Wetland comprising of total area of 226.26 Hectare within the
following boundary delineation:-
The geo-coordinates of Chawand Wetland

Chawand Talab								
S.No.	Latitude	Longitude	S.No.	Latitude	Longitude	S.No.	Latitude	Longitude
1	24.192620	73.827419	45	24.187576	73.839288	89	24.180617	73.825934
2	24.192206	73.828212	46	24.186703	73.839292	90	24.180751	73.824997
3	24.191404	73.828642	47	24.185989	73.839198	91	24.181229	73.824188
4	24.190623	73.829119	48	24.185098	73.839138	92	24.181065	73.823289
5	24.189845	73.829601	49	24.185282	73.839964	93	24.181715	73.822713
6	24.189064	73.830078	50	24.185707	73.840767	94	24.182088	73.821853
7	24.188696	73.830896	51	24.185313	73.841398	95	24.181996	73.820885
8	24.188912	73.831821	52	24.186107	73.841759	96	24.181778	73.819946
9	24.189688	73.832241	53	24.185956	73.842650	97	24.181544	73.819050
10	24.190568	73.832350	54	24.185119	73.842878	98	24.182084	73.818437
11	24.191261	73.831785	55	24.184287	73.843125	99	24.182093	73.817465
12	24.191984	73.831216	56	24.183490	73.842846	100	24.182274	73.816515
13	24.192753	73.830747	57	24.182628	73.843008	101	24.182684	73.816180
14	24.193615	73.830878	58	24.181854	73.842664	102	24.182679	73.817155
15	24.194328	73.831447	59	24.181006	73.842834	103	24.182691	73.818131
16	24.195110	73.831903	60	24.180295	73.842365	104	24.182842	73.819087
17	24.195545	73.832513	61	24.179452	73.842639	105	24.183136	73.820008
18	24.196322	73.832965	62	24.178638	73.842410	106	24.183554	73.820838
19	24.197147	73.833216	63	24.177887	73.842359	107	24.184313	73.821277
20	24.198011	73.833460	64	24.177346	73.841595	108	24.184970	73.821229
21	24.198481	73.834061	65	24.177492	73.841024	109	24.185154	73.820275
22	24.197668	73.833907	66	24.176738	73.840848	110	24.185324	73.819356
23	24.196846	73.833861	67	24.176848	73.839885	111	24.185578	73.818501
24	24.196095	73.833342	68	24.176916	73.838916	112	24.185977	73.818333
25	24.195261	73.832989	69	24.176865	73.837942	113	24.185805	73.819272
26	24.194498	73.832488	70	24.176878	73.836968	114	24.185723	73.820239
27	24.193698	73.832062	71	24.177122	73.836035	115	24.185682	73.821210
28	24.192823	73.831948	72	24.177469	73.835136	116	24.185847	73.822157
29	24.192132	73.832455	73	24.177826	73.834241	117	24.185161	73.822730
30	24.191945	73.833403	74	24.178092	73.833317	118	24.184921	73.823613
31	24.191518	73.834255	75	24.178545	73.832477	119	24.184497	73.824468
32	24.190912	73.834930	76	24.178871	73.831762	120	24.184443	73.825432
33	24.190112	73.835322	77	24.179481	73.831190	121	24.184128	73.826315
34	24.189283	73.835205	78	24.180147	73.831685	122	24.184427	73.827137
35	24.188820	73.834397	79	24.180567	73.832541	123	24.184799	73.828006
36	24.188594	73.835246	80	24.181213	73.832892	124	24.184871	73.828799
37	24.187873	73.835479	81	24.181785	73.832199	125	24.185654	73.828960
38	24.187050	73.835269	82	24.181198	73.831549	126	24.186162	73.828211
39	24.187152	73.835909	83	24.181026	73.830601	127	24.187009	73.827978
40	24.187676	73.836617	84	24.181356	73.829817	128	24.187826	73.827579
41	24.188542	73.836610	85	24.180632	73.829384	129	24.188650	73.827202
42	24.189102	73.837323	86	24.180035	73.828666	130	24.189508	73.826927
43	24.188964	73.838194	87	24.180025	73.827716	131	24.190316	73.826529
44	24.188404	73.838934	88	24.180327	73.826799	132	24.191172	73.826250
						133	24.192050	73.826204

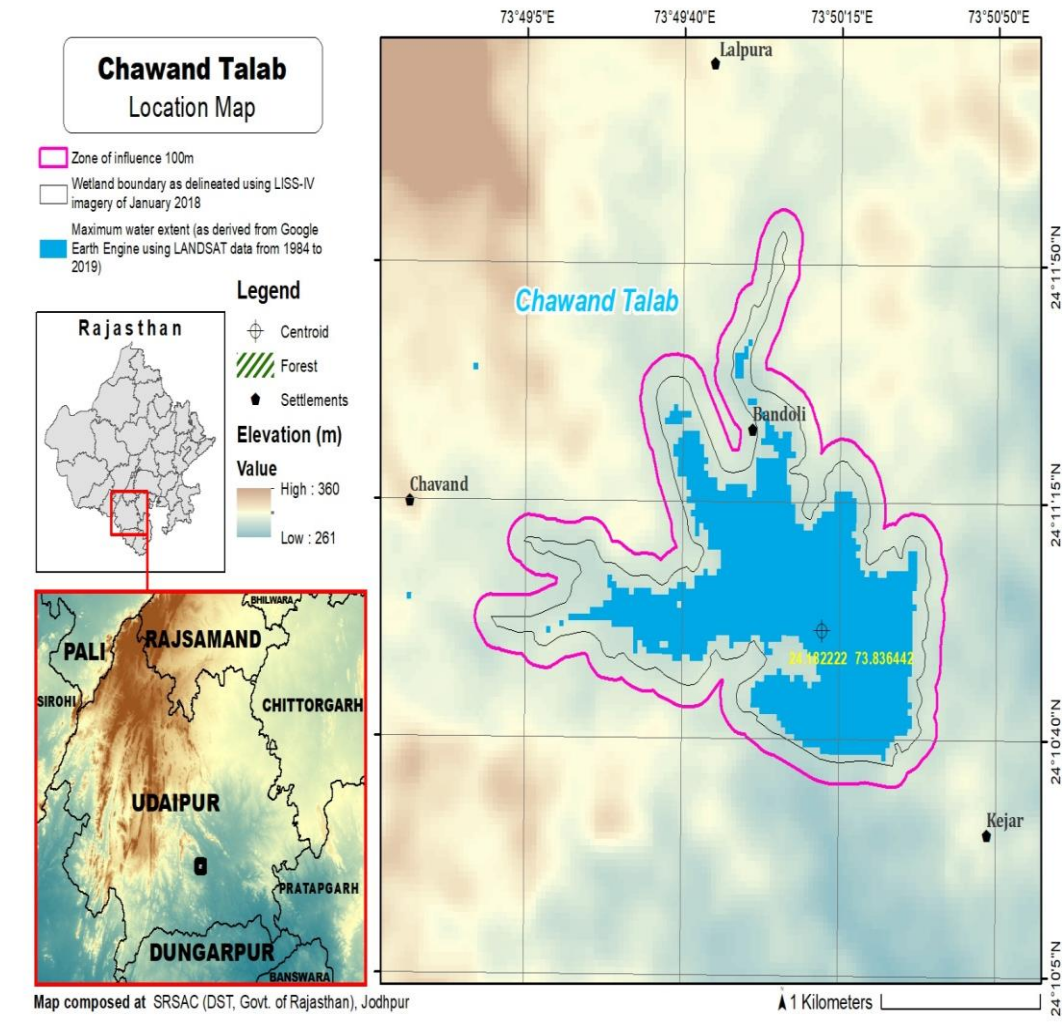
Details of Catchment Area/Zone of Influence of Chawand Wetland falling within the boundary limit:-

Total Area= 127.89 ha

The geo-coordinates of Chawand Wetland and its Zone of influence

Chawand Talab								
S.No.	Latitude	Longitude	S.No.	Latitude	Longitude	S.No.	Latitude	Longitude
1	24.175942	73.839911	42	24.186421	73.817312	83	24.199277	73.833283
2	24.176021	73.838942	43	24.186869	73.818132	84	24.199437	73.834211
3	24.175971	73.837968	44	24.186803	73.819103	85	24.198880	73.834935
4	24.175969	73.836993	45	24.186669	73.820054	86	24.198016	73.835106
5	24.176150	73.836039	46	24.186569	73.821019	87	24.197148	73.834959
6	24.176496	73.835139	47	24.186757	73.821969	88	24.196322	73.834652
7	24.176849	73.834243	48	24.186513	73.822889	89	24.195557	73.834161
8	24.177149	73.833330	49	24.185825	73.823476	90	24.194723	73.833805
9	24.177528	73.832454	50	24.185548	73.824384	91	24.193972	73.833278
10	24.177971	73.831628	51	24.185337	73.825296	92	24.193152	73.832921
11	24.178350	73.830774	52	24.185208	73.826249	93	24.192807	73.833670
12	24.179096	73.830267	53	24.185455	73.827056	94	24.192421	73.834548
13	24.179975	73.830281	54	24.186056	73.827183	95	24.191918	73.835350
14	24.179739	73.829791	55	24.186912	73.826956	96	24.191176	73.835879
15	24.179199	73.829025	56	24.187729	73.826557	97	24.190358	73.836261
16	24.179054	73.828073	57	24.188564	73.826213	98	24.189561	73.836404
17	24.179271	73.827131	58	24.189423	73.825937	99	24.190024	73.837221
18	24.179596	73.826225	59	24.190228	73.825527	100	24.190034	73.838183
19	24.179705	73.825301	60	24.191088	73.825260	101	24.189533	73.838979
20	24.180033	73.824397	61	24.191973	73.825196	102	24.188958	73.839708
21	24.180138	73.823491	62	24.192779	73.825566	103	24.188150	73.840113
22	24.180369	73.822563	63	24.193328	73.826328	104	24.187286	73.840351
23	24.181065	73.821973	64	24.193511	73.827271	105	24.186490	73.840279
24	24.181116	73.821071	65	24.193386	73.828231	106	24.186806	73.841148
25	24.180848	73.820156	66	24.192811	73.828969	107	24.187057	73.842061
26	24.180614	73.819232	67	24.192007	73.829393	108	24.186858	73.843001
27	24.180866	73.818309	68	24.191226	73.829869	109	24.186198	73.843647
28	24.181184	73.817462	69	24.190448	73.830350	110	24.185343	73.843863
29	24.181366	73.816510	70	24.189667	73.830828	111	24.184492	73.844150
30	24.181658	73.815628	71	24.190116	73.831348	112	24.183635	73.843902
31	24.182380	73.815059	72	24.190816	73.830902	113	24.182774	73.844011
32	24.183229	73.815195	73	24.191556	73.830355	114	24.181896	73.843854
33	24.183583	73.816048	74	24.192320	73.829849	115	24.181017	73.843811
34	24.183572	73.817023	75	24.193187	73.829887	116	24.180158	73.843585
35	24.183585	73.817998	76	24.194060	73.830009	117	24.179306	73.843622
36	24.183742	73.818952	77	24.194781	73.830579	118	24.178484	73.843563
37	24.184036	73.819873	78	24.195563	73.831015	119	24.177624	73.843398
38	24.184417	73.819468	79	24.196277	73.831556	120	24.177002	73.842706
39	24.184497	73.818511	80	24.196883	73.832125	121	24.176499	73.841916
40	24.184956	73.817692	81	24.197742	73.832355	122	24.175910	73.841229
41	24.185593	73.817065	82	24.198572	73.832698			

The detailed Map of Chawand Wetland and its Zone of Influence is annexed herewith as Schedule-I ('A').



Schedule-II

Prohibited Activities in Chawand Wetland:-

1. Conversion for non wetland uses including encroachments of any kind;
2. Setting up of any new industry and expansion of existing industries;
3. Manufacture or/and handling or/and storage or/and disposal of construction and demolition waste covered under the Construction and Demolition Waste Management Rules, 2016; hazardous substances covered under the Manufacture, Storage and Import of Hazardous Chemical Rules, 1989 or the Rules for Manufacture, Use, Import, Export and Storage of Hazardous Microorganism Genetically Engineered organized or cells, 1989 or the Hazardous Waste (Management, Handling and Transboundary Movement) Rules, 2008; electronic waste covered under the E-Waste (Management) Rules 2016; plastic waste covered under Plastic Waste (Management) Rules, 2016;
4. Solid waste storage and disposal;
5. Discharge of untreated waste and effluents from industries, cities, towns, villages and other human settlements;

6. Any construction of permanent nature except for boat jetties within fifty metres from the mean high flood level observed in the past ten years calculated from the date of commencement of these rules;
7. Commercial mining, stone quarrying and crushing units
8. Commercial water extraction Establishment of large scale commercial livestock and poultry farms;
9. Reducing area/ capacity of the water body;
10. Feeding of fishes and migratory birds by the public;
11. Any type of poaching.

Prohibited Activities in Catchment Area/Zone of Influence:-

1. Discharge of untreated Solid/liquid waste and effluents;
2. Manufacture or/and handling or/and storage or/and disposal of construction and demolition waste covered under the Construction and Demolition Waste Management Rules, 2016; hazardous substances covered under the Manufacture, Storage and Import of Hazardous Chemical Rules, 1989 or the Rules for Manufacture, Use, Import, Export and Storage of Hazardous Microorganism Genetically Engineered organized or cells, 1989 or the Hazardous Waste (Management, Handling and Transboundary Movement) Rules, 2008; electronic waste covered under the E-Waste (Management) Rules 2016; plastic waste covered under Plastic Waste (Management) Rules, 2016;
3. Extraction of commercial water including groundwater.
4. Any type of poaching;

Schedule-III

Regulated Activities in Chawand Wetland:-

1. Fisheries;
2. Plying of boats;
3. Desilting;
4. Construction of temporary structures;
5. Water extraction for certain purposes.

Regulated Activities in Catchment Area/Zone of Influence:-

1. Conversion of land for any type of construction;
2. Setting up of any new industries and expansion of existing industries;
3. Mining.

[F.No.6 (3) Env/2023]

By order of the Governor,

Shikhar Agrawal,
Additional Chief Secretary to the Government.

Government Central Press, Jaipur.