 सत्यमेव जयते	राजस्थान राजपत्र विशेषांक	RAJASTHAN GAZETTE Extraordinary
	साधिकार प्रकाशित	Published by Authority
	ज्येष्ठ 12, शुक्रवार, शाके 1945-जून 02, 2023 <i>Jyaistha 12, Friday, Saka 1945- June 02, 2023</i>	

भाग 4 (ग)

उप-खण्ड(II)

राज्य सरकार तथा अन्य राज्य प्राधिकारियों द्वारा जारी किये गये कानूनी आदेश तथा अधिसूचनाएं।

Department of Environment and Climate Change
Notification

Jaipur, May 30, 2023

S.O.99 .-The following draft of the notification, which the State Government proposes to issue in exercise of the powers conferred by rule 7 of the Wetland (Conservation and Management) Rules, 2017 read with Environment (Protection) Act, 1986 (Central Act No. 29 of 1986), is hereby published for the information of the persons likely to be concerned or affected thereby and notice is hereby given to them that the said draft notification shall be taken into consideration after the expiry of a period of sixty days from the date on which copies of this notification as published in the Official Gazette are made available to the public.

Any person interested in making any objection or suggestion on the proposals contained in the draft notification may forward the same in writing for consideration to the State Government within the period of 60 days as specified above to the Director cum Joint Secretary, Department of Environment and Climate Change Room No. 8240 SSO Building, Government Secretariat, Jaipur, Rajasthan or at env_raj@yahoo.co.in.

Draft Notification

WHEREAS, the Naagmala wetland, situated in village Falasiya, Tehsil Jhadol, district Udaipur Rajasthan, is considered to be critically significant for its ecosystem services and biodiversity values for the local communities and society at large;

AND WHEREAS, it is considered that for sustaining the said values, the ecological character of wetland ecosystem needs to be maintained by regulating developmental activities within the wetland as well as within its zone of influence;

NOW THEREFORE, the State Government declares that the Naagmala wetland shall be covered under the provisions of the Wetlands (Conservation and Management) Rules, 2017 and notifies that,-

- (i) the extent of the wetland /wetland complex and its zone of influence shall be as described in Schedule-I of this notification;
- (ii) the activities prohibited within the wetland and its zone of influence shall be as listed in Schedule-II of this notification;
- (iii) the activities regulated within the wetland and its zone of influence, i.e. permitted only with permission of the State Government shall be as listed in Schedule-III of this notification. Request for permission for regulated activities may be made to the District

Environment Committee headed by the District Collector; and

- (iv) the State Wetland Authority, Rajasthan shall monitor the enforcement of the provisions of this notification.

Schedule-I

Naagmala Wetland Complex comprising of total area of 102.45 Hectare within the following boundary delineation:-

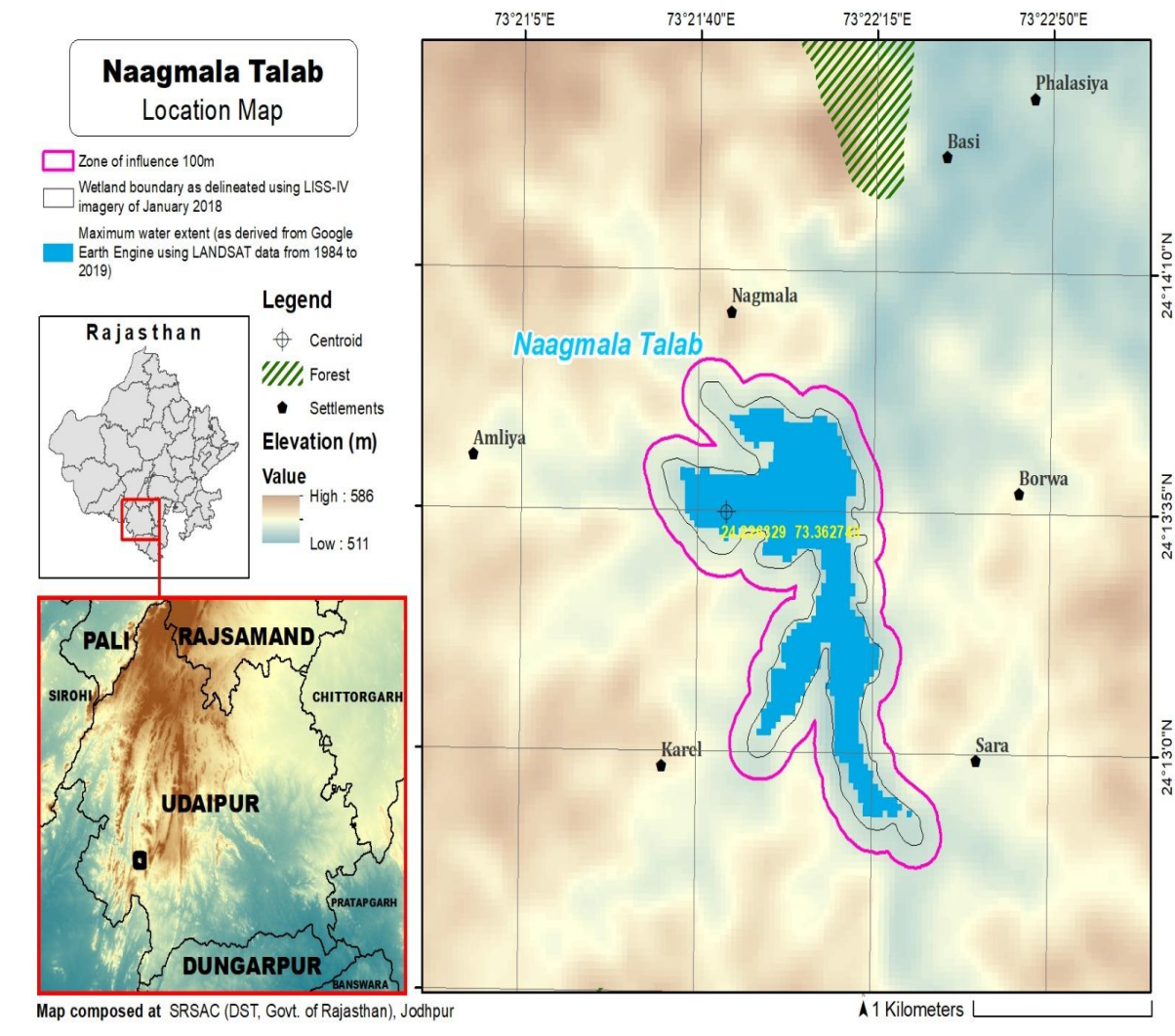
The geo-coordinates of Naagmala Wetland of Udaipur, Rajasthan

Naagmala Talab								
S.No.	Latitude	Longitude	S.No.	Latitude	Longitude	S.No.	Latitude	Longitude
1	24.228580	73.364363	31	24.219506	73.370832	61	24.217662	73.364224
2	24.229006	73.363514	32	24.218813	73.370341	62	24.218387	73.364794
3	24.229630	73.362815	33	24.217939	73.370278	63	24.219197	73.365103
4	24.230226	73.362088	34	24.217108	73.370615	64	24.220025	73.365244
5	24.230786	73.361345	35	24.216358	73.371015	65	24.220762	73.365715
6	24.231562	73.361551	36	24.215611	73.371396	66	24.221578	73.366052
7	24.231402	73.362446	37	24.214996	73.372075	67	24.222029	73.366839
8	24.230749	73.363111	38	24.214514	73.372897	68	24.222503	73.367539
9	24.230740	73.364000	39	24.213928	73.373600	69	24.223333	73.367700
10	24.230990	73.364921	40	24.213079	73.373662	70	24.224142	73.367775
11	24.230695	73.365814	41	24.213138	73.372751	71	24.224826	73.367314
12	24.230212	73.366615	42	24.213829	73.372167	72	24.224375	73.366508
13	24.230341	73.367535	43	24.213562	73.371280	73	24.224082	73.365632
14	24.230425	73.368366	44	24.213830	73.370378	74	24.224229	73.364678
15	24.229814	73.369022	45	24.214517	73.369779	75	24.224942	73.364439
16	24.229000	73.369423	46	24.215224	73.369203	76	24.225570	73.364817
17	24.228235	73.369928	47	24.216097	73.369047	77	24.225511	73.363854
18	24.227418	73.370300	48	24.216915	73.368707	78	24.224932	73.363238
19	24.226551	73.370249	49	24.217804	73.368710	79	24.224620	73.362370
20	24.226228	73.369679	50	24.218688	73.368584	80	24.225046	73.361560
21	24.225723	73.369847	51	24.219503	73.368437	81	24.225679	73.360895
22	24.225478	73.370108	52	24.220376	73.368430	82	24.226265	73.360177
23	24.225064	73.370202	53	24.220692	73.368092	83	24.226974	73.359594
24	24.224376	73.369873	54	24.219866	73.367735	84	24.227820	73.359281
25	24.223658	73.370366	55	24.219122	73.367192	85	24.228413	73.359648
26	24.222822	73.370469	56	24.218311	73.366814	86	24.228301	73.360588
27	24.222391	73.370139	57	24.217664	73.366179	87	24.228127	73.361528
28	24.221628	73.370617	58	24.216995	73.365558	88	24.228036	73.362495
29	24.221004	73.371256	59	24.216457	73.364839	89	24.227970	73.363467
30	24.220216	73.371317	60	24.216799	73.364050			

Details of Catchment Area/Zone of Influence of Naagmala Wetland falling within the boundary limit of Udaipur, Rajasthan:- Total Area Of = 85.85 ha
The geo-coordinates of Naagmala Wetland and its Zone of influence

Naagmala Talab								
S.No.	Latitude	Longitude	S.No.	Latitude	Longitude	S.No.	Latitude	Longitude
1	24.212266	73.372448	28	24.223381	73.364353	55	24.231437	73.368137
2	24.212700	73.371658	29	24.223917	73.363605	56	24.231116	73.369045
3	24.212726	73.370690	30	24.223735	73.362745	57	24.230514	73.369749
4	24.213096	73.369818	31	24.223809	73.361778	58	24.229691	73.370132
5	24.213724	73.369132	32	24.224299	73.360980	59	24.228917	73.370619
6	24.214433	73.368550	33	24.224945	73.360323	60	24.228141	73.371103
7	24.215259	73.368205	34	24.225520	73.359586	61	24.227269	73.371311
8	24.216092	73.367930	35	24.226223	73.358989	62	24.226392	73.371227
9	24.216959	73.367721	36	24.227000	73.358525	63	24.225605	73.371429
10	24.217849	73.367724	37	24.227857	73.358246	64	24.224740	73.371321
11	24.217282	73.367236	38	24.228718	73.358377	65	24.224018	73.371263
12	24.216710	73.366498	39	24.229228	73.359153	66	24.223164	73.371515
13	24.215982	73.365942	40	24.229362	73.360113	67	24.222313	73.371384
14	24.215577	73.365080	41	24.229101	73.361045	68	24.221656	73.371956
15	24.215625	73.364117	42	24.229018	73.362004	69	24.220893	73.372428
16	24.216118	73.363318	43	24.229536	73.361465	70	24.220026	73.372271
17	24.216960	73.363056	44	24.230072	73.360686	71	24.219195	73.371943
18	24.217828	73.363248	45	24.230878	73.360293	72	24.218579	73.371285
19	24.218593	73.363743	46	24.231743	73.360460	73	24.217745	73.371465
20	24.219367	73.364089	47	24.232370	73.361126	74	24.216948	73.371810
21	24.220243	73.364205	48	24.232480	73.362080	75	24.216151	73.372174
22	24.220947	73.364725	49	24.232178	73.362968	76	24.215566	73.372894
23	24.221775	73.365064	50	24.231576	73.363648	77	24.215097	73.373726
24	24.222478	73.365646	51	24.231873	73.364561	78	24.214468	73.374407
25	24.222896	73.366486	52	24.231819	73.365527	79	24.213619	73.374689
26	24.223241	73.366270	53	24.231418	73.366391	80	24.212755	73.374583
27	24.223210	73.365304	54	24.231309	73.367184	81	24.212189	73.373869

The detailed Map of Naagmala Wetland and its Zone of Influence is annexed herewith as Schedule-I ('A').



Schedule-II

Prohibited Activities in Naagmala Wetland:-

1. Conversion for non wetland uses including encroachments of any kind;
2. Setting up of any new industry and expansion of existing industries;
3. Manufacture or/and handling or/and storage or/and disposal of construction and demolition waste covered under the Construction and Demolition Waste Management Rules, 2016; hazardous substances covered under the Manufacture, Storage and Import of Hazardous Chemical Rules, 1989 or the Rules for Manufacture, Use, Import, Export and Storage of Hazardous Microorganism Genetically Engineered organized or cells, 1989 or the Hazardous Waste (Management, Handling and Transboundary Movement) Rules, 2008; electronic waste covered under the E-Waste (Management) Rules 2016; plastic waste covered under Plastic Waste (Management) Rules, 2016;
4. Solid waste storage and disposal;
5. Discharge of untreated waste and effluents from industries, cities, towns, villages and other human settlements;

6. Any construction of permanent nature except for boat jetties within fifty metres from the mean high flood level observed in the past ten years calculated from the date of commencement of these rules;
7. Commercial mining, stone quarrying and crushing units
8. Commercial water extraction Establishment of large scale commercial livestock and poultry farms;
9. Reducing area/ capacity of the water body;
10. Feeding of fishes and migratory birds by the public;
11. Any type of poaching.

Prohibited Activities in Catchment Area/Zone of Influence:-

1. Discharge of untreated Solid/liquid waste and effluents;
2. Manufacture or/and handling or/and storage or/and disposal of construction and demolition waste covered under the Construction and Demolition Waste Management Rules, 2016; hazardous substances covered under the Manufacture, Storage and Import of Hazardous Chemical Rules, 1989 or the Rules for Manufacture, Use, Import, Export and Storage of Hazardous Microorganism Genetically Engineered organized or cells, 1989 or the Hazardous Waste (Management, Handling and Transboundary Movement) Rules, 2008; electronic waste covered under the E-Waste (Management) Rules 2016; plastic waste covered under Plastic Waste (Management) Rules, 2016;
3. Extraction of commercial water including groundwater.
4. Any type of poaching;

Schedule-III

Regulated Activities in Naagmala Wetland:-

1. Fisheries;
2. Plying of boats;
3. Desilting;
4. Construction of temporary structures;
5. Water extraction for certain purposes.

Regulated Activities in Catchment Area/Zone of Influence:-

1. Conversion of land for any type of construction;
2. Setting up of any new industries and expansion of existing industries;
3. Mining.

[F.No.6 (3) Env/2023]
By order of the Governor,

Shikhar Agrawal,
Additional Chief Secretary to the Government.

Government Central Press, Jaipur.