 सत्यमेव जयते	राजस्थान राजपत्र विशेषांक	RAJASTHAN GAZETTE Extraordinary
	साधिकार प्रकाशित	Published by Authority
	ज्येष्ठ 12, शुक्रवार, शाके 1945-जून 02, 2023 <i>Jyaistha 12, Friday, Saka 1945- June 02, 2023</i>	

भाग 4 (ग)

उप-खण्ड(II)

राज्य सरकार तथा अन्य राज्य प्राधिकारियों द्वारा जारी किये गये कानूनी आदेश तथा अधिसूचनाएं।

Department of Environment and Climate Change
Notification

Jaipur, May 30, 2023

S.O.90 .- The following draft of the notification, which the State Government proposes to issue in exercise of the powers conferred by rule 7 of the Wetland (Conservation and Management) Rules, 2017 read with Environment (Protection) Act, 1986 (Central Act No. 29 of 1986), is hereby published for the information of the persons likely to be concerned or affected thereby and notice is hereby given to them that the said draft notification shall be taken into consideration after the expiry of a period of sixty days from the date on which copies of this notification as published in the Official Gazette are made available to the public.

Any person interested in making any objection or suggestion on the proposals contained in the draft notification may forward the same in writing for consideration to the State Government within the period of 60 days as specified above to the Director cum Joint Secretary, Department of Environment and Climate Change Room No. 8240 SSO Building, Government Secretariat, Jaipur, Rajasthan or at env_raj@yahoo.co.in.

Draft Notification

WHEREAS, the Kalisil Dam wetland, situated in village Ramathra, Tehsil Sapotra, district Karauli Rajasthan, is considered to be critically significant for its ecosystem services and biodiversity values for the local communities and society at large;

AND WHEREAS, it is considered that for sustaining the said values, the ecological character of wetland ecosystem needs to be maintained by regulating developmental activities within the wetland as well as within its zone of influence;

NOW THEREFORE, the State Government declares that the Kalisil Dam wetland shall be covered under the provisions of the Wetlands (Conservation and Management) Rules, 2017 and notifies that,-

- (i) the extent of the wetland /wetland complex and its zone of influence shall be as described in Schedule-I of this notification;
- (ii) the activities prohibited within the wetland and its zone of influence shall be as listed in Schedule-II of this notification;
- (iii) the activities regulated within the wetland and its zone of influence, i.e. permitted only with permission of the State Government shall be as listed in Schedule-III of this notification. Request for permission for regulated activities may be made to the District

Environment Committee headed by the District Collector; and

- (iv) the State Wetland Authority, Rajasthan shall monitor the enforcement of the provisions of this notification.

Schedule-I

Kalisil Dam Wetland Complex comprising of total area of 1236.97 Hectare within the following boundary delineation:-

The geo-coordinates of Kalisil Dam Wetland of Karauli, Rajasthan

Kalisil Dam								
S.no	Latitude	Longitude	S.no	Latitude	Longitude	S.no	Latitude	Longitude
1	26.291256	76.815471	328	26.286741	76.830243	655	26.262015	76.796013
2	26.291024	76.816104	329	26.286292	76.829437	656	26.262505	76.795256
3	26.291785	76.815743	330	26.285539	76.828942	657	26.261860	76.795343
4	26.292528	76.816175	331	26.285025	76.828206	658	26.261544	76.795824
5	26.293325	76.816604	332	26.284730	76.827279	659	26.260824	76.796260
6	26.293778	76.816176	333	26.284372	76.826826	660	26.260600	76.796178
7	26.294161	76.816299	334	26.284069	76.826788	661	26.260735	76.796818
8	26.294285	76.817255	335	26.283741	76.826112	662	26.260060	76.797457
9	26.295091	76.816944	336	26.283865	76.826600	663	26.259412	76.798123
10	26.295800	76.816391	337	26.284002	76.827494	664	26.258866	76.798274
11	26.296386	76.815849	338	26.283519	76.828188	665	26.259389	76.797675
12	26.296539	76.815072	339	26.282976	76.828661	666	26.259678	76.796779
13	26.296123	76.814257	340	26.282517	76.829317	667	26.259157	76.797175
14	26.295826	76.813363	341	26.282599	76.830030	668	26.258537	76.797785
15	26.296584	76.813466	342	26.282827	76.830659	669	26.257654	76.797712
16	26.297198	76.813945	343	26.283078	76.831543	670	26.257686	76.797064
17	26.297941	76.813698	344	26.282851	76.832343	671	26.258466	76.796643
18	26.297749	76.814342	345	26.282237	76.832232	672	26.258141	76.796049
19	26.298275	76.814290	346	26.282436	76.831481	673	26.257406	76.795880
20	26.298279	76.813333	347	26.282005	76.832175	674	26.256611	76.795615
21	26.298493	76.813940	348	26.281432	76.832389	675	26.256754	76.795310
22	26.299105	76.814476	349	26.280930	76.831768	676	26.257560	76.795531
23	26.299524	76.814887	350	26.280376	76.832416	677	26.258341	76.795294
24	26.300201	76.815067	351	26.279496	76.832376	678	26.258453	76.794451
25	26.300767	76.814451	352	26.278988	76.832959	679	26.257834	76.794853
26	26.301471	76.814104	353	26.278234	76.833395	680	26.257233	76.794404
27	26.301822	76.813220	354	26.278426	76.834103	681	26.257934	76.794032
28	26.302218	76.814026	355	26.279284	76.834330	682	26.258229	76.793222
29	26.302614	76.814885	356	26.279803	76.834999	683	26.258807	76.792575
30	26.302828	76.815796	357	26.278972	76.835115	684	26.259684	76.792629
31	26.303312	76.816558	358	26.278495	76.835687	685	26.259928	76.793473
32	26.303704	76.815946	359	26.278069	76.835619	686	26.260559	76.793670
33	26.304058	76.815879	360	26.278245	76.834773	687	26.261178	76.793197
34	26.304102	76.816850	361	26.277622	76.835274	688	26.261951	76.793066
35	26.303710	76.817689	362	26.277052	76.835424	689	26.261494	76.792703
36	26.304223	76.818196	363	26.277508	76.834618	690	26.260748	76.792730
37	26.304912	76.817641	364	26.277299	76.834470	691	26.261280	76.792036
38	26.305400	76.818318	365	26.276659	76.834794	692	26.261747	76.791318
39	26.306125	76.818573	366	26.277136	76.834028	693	26.262436	76.790928
40	26.306111	76.819526	367	26.276558	76.834026	694	26.262561	76.790108

41	26.305312	76.819375	368	26.275772	76.834340	695	26.262499	76.789508
42	26.304743	76.818783	369	26.275692	76.835129	696	26.261867	76.789149
43	26.303971	76.819073	370	26.275121	76.835105	697	26.261754	76.790009
44	26.303247	76.818895	371	26.275129	76.835890	698	26.261634	76.790921
45	26.303014	76.818010	372	26.274974	76.836767	699	26.260991	76.791495
46	26.302251	76.817705	373	26.274886	76.835935	700	26.260205	76.791703
47	26.301452	76.817566	374	26.274784	76.835041	701	26.259749	76.790940
48	26.301796	76.816701	375	26.274772	76.834351	702	26.259019	76.791094
49	26.301720	76.815812	376	26.274407	76.835176	703	26.259621	76.790418
50	26.300899	76.815819	377	26.274424	76.835883	704	26.259302	76.790033
51	26.300296	76.816306	378	26.273863	76.835477	705	26.258430	76.790218
52	26.299611	76.816178	379	26.273777	76.835926	706	26.257548	76.790329
53	26.299176	76.816628	380	26.273390	76.836440	707	26.257031	76.789970
54	26.298893	76.816196	381	26.273741	76.837218	708	26.257852	76.789773
55	26.298240	76.816076	382	26.274009	76.838120	709	26.258318	76.789320
56	26.297680	76.816655	383	26.273539	76.837430	710	26.258235	76.788696
57	26.297460	76.817604	384	26.273035	76.837591	711	26.259046	76.788855
58	26.297641	76.818557	385	26.272994	76.836658	712	26.259421	76.788138
59	26.297313	76.819444	386	26.272886	76.835722	713	26.258790	76.787480
60	26.297124	76.820369	387	26.273390	76.834942	714	26.258062	76.786916
61	26.297572	76.821180	388	26.272929	76.834248	715	26.258189	76.786351
62	26.297460	76.821999	389	26.272483	76.833752	716	26.258850	76.786944
63	26.298228	76.822390	390	26.272869	76.833195	717	26.259515	76.787009
64	26.298600	76.823074	391	26.272164	76.832692	718	26.258969	76.786477
65	26.299264	76.823657	392	26.271519	76.832559	719	26.258395	76.786178
66	26.299635	76.822830	393	26.271492	76.833477	720	26.257782	76.785534
67	26.299724	76.823319	394	26.272163	76.834042	721	26.258452	76.785322
68	26.300116	76.824147	395	26.271735	76.834862	722	26.259335	76.785433
69	26.300919	76.824024	396	26.271426	76.835775	723	26.260172	76.785704
70	26.301246	76.823750	397	26.272044	76.836423	724	26.260865	76.785211
71	26.301427	76.824174	398	26.272070	76.837323	725	26.260795	76.784232
72	26.301029	76.824701	399	26.272087	76.838255	726	26.260779	76.783250
73	26.301902	76.824850	400	26.271725	76.838485	727	26.260627	76.782297
74	26.301829	76.825139	401	26.271143	76.838471	728	26.260105	76.782373
75	26.301158	76.825366	402	26.270332	76.838857	729	26.259670	76.783233
76	26.301128	76.825746	403	26.269539	76.839286	730	26.258989	76.783856
77	26.302012	76.825663	404	26.268812	76.839810	731	26.258185	76.784262
78	26.302338	76.826254	405	26.268168	76.840487	732	26.257312	76.784281
79	26.302293	76.827200	406	26.267590	76.841228	733	26.256660	76.783651
80	26.302758	76.827965	407	26.267130	76.842072	734	26.256146	76.782869
81	26.303642	76.827860	408	26.266668	76.842916	735	26.256355	76.782278
82	26.304521	76.827896	409	26.266424	76.843841	736	26.256911	76.782980
83	26.305364	76.828197	410	26.265809	76.843591	737	26.257650	76.783311
84	26.305720	76.828671	411	26.266256	76.842743	738	26.258422	76.782877
85	26.304901	76.828289	412	26.266623	76.841845	739	26.258349	76.782558
86	26.304116	76.828397	413	26.267014	76.840959	740	26.258607	76.781756
87	26.303491	76.828551	414	26.267406	76.840083	741	26.258439	76.780907
88	26.302864	76.828714	415	26.267991	76.839342	742	26.258090	76.780596
89	26.303205	76.829024	416	26.268444	76.838505	743	26.258224	76.779720
90	26.304064	76.828968	417	26.268143	76.837591	744	26.258386	76.778813
91	26.304864	76.829127	418	26.267940	76.836642	745	26.258299	76.777841
92	26.304688	76.829164	419	26.267540	76.835792	746	26.258399	76.777161
93	26.303961	76.829292	420	26.266727	76.835404	747	26.258294	76.776298

94	26.303837	76.829666	421	26.265910	76.835016	748	26.258358	76.775332
95	26.304552	76.830085	422	26.265159	76.835338	749	26.258726	76.774447
96	26.303785	76.830096	423	26.264595	76.836027	750	26.259434	76.773952
97	26.303161	76.829774	424	26.264240	76.836860	751	26.259866	76.773158
98	26.303452	76.830631	425	26.263499	76.837313	752	26.260614	76.773330
99	26.303225	76.830889	426	26.262621	76.837418	753	26.260367	76.774238
100	26.303126	76.830458	427	26.261781	76.837155	754	26.260376	76.775218
101	26.302774	76.829735	428	26.261071	76.836575	755	26.260507	76.776075
102	26.302402	76.830111	429	26.260838	76.835954	756	26.260329	76.777030
103	26.302017	76.829881	430	26.261662	76.835950	757	26.260405	76.778012
104	26.301742	76.830592	431	26.262281	76.835509	758	26.260692	76.778776
105	26.302369	76.831242	432	26.262993	76.835323	759	26.261436	76.778913
106	26.303149	76.831339	433	26.263849	76.835149	760	26.262215	76.779288
107	26.303992	76.831204	434	26.264599	76.834622	761	26.263044	76.779071
108	26.304837	76.830900	435	26.265368	76.834179	762	26.263567	76.778310
109	26.305623	76.830491	436	26.266237	76.834286	763	26.264138	76.777565
110	26.306271	76.830540	437	26.266379	76.833552	764	26.264524	76.776983
111	26.305950	76.831384	438	26.266477	76.832694	765	26.265347	76.777283
112	26.305167	76.831739	439	26.266635	76.831729	766	26.266158	76.776999
113	26.305371	76.832248	440	26.266232	76.830935	767	26.266287	76.776222
114	26.305765	76.832965	441	26.266041	76.830076	768	26.266474	76.775357
115	26.305999	76.833322	442	26.266795	76.830468	769	26.266164	76.774454
116	26.305971	76.832385	443	26.267605	76.830344	770	26.265663	76.773639
117	26.306256	76.831702	444	26.268358	76.829836	771	26.265116	76.772874
118	26.306746	76.832323	445	26.268480	76.829201	772	26.264358	76.773039
119	26.307028	76.831407	446	26.267722	76.828762	773	26.264043	76.772841
120	26.307592	76.830667	447	26.267936	76.828124	774	26.263799	76.772287
121	26.307892	76.830041	448	26.268701	76.828517	775	26.263212	76.772415
122	26.307816	76.830989	449	26.269507	76.828819	776	26.262798	76.771570
123	26.307814	76.831770	450	26.270304	76.829087	777	26.262722	76.770602
124	26.308383	76.832468	451	26.271162	76.829252	778	26.262284	76.769787
125	26.308562	76.833088	452	26.271771	76.829099	779	26.262677	76.768972
126	26.307892	76.832541	453	26.272507	76.828949	780	26.262648	76.768334
127	26.307220	76.832068	454	26.273368	76.828954	781	26.261791	76.768172
128	26.307374	76.832848	455	26.273030	76.829498	782	26.261084	76.768753
129	26.308053	76.833450	456	26.272200	76.829781	783	26.260357	76.769321
130	26.307954	76.834097	457	26.272729	76.830015	784	26.259504	76.769579
131	26.307190	76.833721	458	26.273504	76.830447	785	26.258616	76.769602
132	26.307140	76.834332	459	26.274105	76.831169	786	26.257881	76.769121
133	26.307527	76.835135	460	26.274872	76.831269	787	26.257720	76.768161
134	26.308241	76.835675	461	26.275729	76.831483	788	26.257826	76.767239
135	26.309012	76.835462	462	26.276616	76.831503	789	26.258509	76.766607
136	26.309745	76.835325	463	26.277494	76.831517	790	26.259192	76.765975
137	26.309544	76.835833	464	26.277920	76.830800	791	26.259877	76.765346
138	26.309306	76.836579	465	26.277341	76.830629	792	26.260564	76.764718
139	26.308849	76.836788	466	26.277835	76.830184	793	26.261249	76.764089
140	26.309357	76.837357	467	26.278654	76.829936	794	26.261932	76.763457
141	26.310195	76.837215	468	26.279526	76.829859	795	26.262615	76.762824
142	26.310437	76.836306	469	26.280230	76.829705	796	26.263176	76.762062
143	26.310412	76.835748	470	26.280055	76.828775	797	26.263627	76.761217
144	26.311262	76.835608	471	26.279447	76.828506	798	26.264422	76.761256
145	26.312118	76.835870	472	26.279013	76.828853	799	26.265132	76.761850
146	26.312717	76.836562	473	26.279248	76.828160	800	26.265674	76.762632

147	26.313128	76.837400	474	26.278627	76.827514	801	26.265945	76.763548
148	26.313634	76.838194	475	26.277935	76.827465	802	26.266138	76.764509
149	26.314297	76.838832	476	26.277197	76.827824	803	26.265812	76.765407
150	26.314392	76.839538	477	26.276318	76.827937	804	26.266265	76.766169
151	26.313663	76.839121	478	26.275901	76.828708	805	26.267048	76.766092
152	26.313502	76.839906	479	26.275317	76.829260	806	26.267320	76.765214
153	26.313816	76.840808	480	26.274480	76.829505	807	26.268115	76.765656
154	26.314539	76.841344	481	26.273794	76.828960	808	26.268911	76.766096
155	26.314905	76.841960	482	26.273929	76.827993	809	26.269713	76.766522
156	26.315537	76.842482	483	26.274025	76.827016	810	26.270521	76.766936
157	26.315846	76.843205	484	26.274210	76.826068	811	26.271328	76.767350
158	26.315229	76.843220	485	26.274358	76.825100	812	26.272180	76.767443
159	26.314836	76.842347	486	26.274750	76.824483	813	26.272891	76.767977
160	26.314056	76.841912	487	26.275604	76.824709	814	26.272467	76.768755
161	26.313344	76.841336	488	26.276471	76.824912	815	26.272127	76.769659
162	26.312816	76.841474	489	26.277347	76.825037	816	26.271961	76.770604
163	26.313028	76.842149	490	26.277972	76.825729	817	26.272015	76.771589
164	26.312738	76.842540	491	26.278367	76.825718	818	26.272090	76.772572
165	26.313404	76.842911	492	26.278978	76.825424	819	26.271844	76.773498
166	26.313334	76.843263	493	26.279841	76.825200	820	26.271640	76.774459
167	26.312589	76.842997	494	26.280707	76.824979	821	26.271838	76.775402
168	26.312100	76.843122	495	26.280953	76.824484	822	26.272445	76.776116
169	26.312551	76.843800	496	26.281101	76.823560	823	26.273024	76.776865
170	26.311772	76.843633	497	26.281464	76.822663	824	26.272859	76.777619
171	26.311823	76.843033	498	26.281617	76.821704	825	26.272995	76.778217
172	26.312216	76.842306	499	26.281840	76.820750	826	26.273460	76.778915
173	26.311966	76.842012	500	26.282245	76.819871	827	26.272811	76.778770
174	26.312140	76.841653	501	26.282897	76.819220	828	26.272239	76.779065
175	26.312530	76.841004	502	26.283569	76.818584	829	26.272729	76.779856
176	26.311940	76.840317	503	26.284028	76.817739	830	26.273368	76.780492
177	26.311579	76.839531	504	26.284473	76.816884	831	26.273883	76.781244
178	26.311836	76.838739	505	26.284614	76.815935	832	26.274218	76.782151
179	26.311510	76.838042	506	26.284240	76.815207	833	26.274564	76.783058
180	26.311328	76.838615	507	26.283801	76.814416	834	26.275127	76.783803
181	26.310834	76.839051	508	26.283258	76.813810	835	26.275728	76.784495
182	26.310017	76.838834	509	26.282582	76.813244	836	26.276552	76.784306
183	26.309177	76.838802	510	26.281806	76.812776	837	26.276960	76.783576
184	26.309742	76.839022	511	26.281013	76.812347	838	26.276410	76.782873
185	26.310562	76.839347	512	26.280210	76.812062	839	26.276213	76.782009
186	26.311344	76.839651	513	26.279408	76.811975	840	26.276534	76.781276
187	26.310892	76.840415	514	26.278555	76.811888	841	26.277339	76.781521
188	26.310662	76.841205	515	26.277676	76.812012	842	26.277144	76.780846
189	26.311086	76.842043	516	26.277993	76.812734	843	26.276914	76.779942
190	26.311472	76.842522	517	26.277251	76.812636	844	26.276510	76.779083
191	26.310923	76.842975	518	26.277428	76.813586	845	26.275958	76.778386
192	26.311161	76.843709	519	26.277871	76.814420	846	26.275432	76.777631
193	26.310586	76.844271	520	26.277977	76.815123	847	26.275570	76.776686
194	26.310261	76.844713	521	26.277297	76.814596	848	26.276181	76.776011
195	26.309627	76.844758	522	26.276991	76.813711	849	26.276945	76.775542
196	26.309285	76.845333	523	26.276779	76.812765	850	26.277167	76.774594
197	26.308708	76.845648	524	26.276859	76.811789	851	26.277632	76.773752
198	26.309407	76.845964	525	26.276914	76.810805	852	26.278114	76.772947
199	26.308823	76.846470	526	26.276835	76.809826	853	26.278825	76.772414

200	26.308524	76.845924	527	26.276256	76.809247	854	26.279186	76.771532
201	26.308326	76.845639	528	26.275731	76.809934	855	26.279533	76.770628
202	26.308802	76.844842	529	26.274941	76.809709	856	26.279891	76.769751
203	26.309535	76.844391	530	26.274949	76.810434	857	26.280630	76.769222
204	26.310145	76.843724	531	26.274527	76.810688	858	26.281506	76.769100
205	26.310448	76.842893	532	26.274323	76.811115	859	26.282361	76.769075
206	26.310418	76.842012	533	26.273977	76.810373	860	26.283019	76.768649
207	26.310077	76.842139	534	26.273380	76.810943	861	26.283897	76.768687
208	26.309933	76.841781	535	26.272711	76.810533	862	26.284323	76.769087
209	26.309678	76.840956	536	26.272651	76.809839	863	26.283619	76.769563
210	26.309278	76.841152	537	26.273524	76.809919	864	26.284214	76.770245
211	26.308999	76.840562	538	26.274107	76.809425	865	26.284782	76.770081
212	26.309521	76.840029	539	26.273838	76.808846	866	26.285557	76.770524
213	26.308710	76.839883	540	26.274698	76.808903	867	26.286284	76.770057
214	26.308001	76.839946	541	26.275109	76.808297	868	26.286926	76.769586
215	26.307657	76.839273	542	26.275748	76.807831	869	26.287348	76.768946
216	26.307537	76.838464	543	26.275493	76.806938	870	26.288176	76.768725
217	26.307031	76.837683	544	26.275176	76.806430	871	26.288851	76.768144
218	26.306380	76.837012	545	26.274634	76.805951	872	26.289058	76.769002
219	26.305589	76.836610	546	26.274161	76.805358	873	26.288662	76.769712
220	26.305138	76.835762	547	26.274789	76.805319	874	26.287890	76.770073
221	26.304689	76.834915	548	26.275371	76.805295	875	26.287386	76.770683
222	26.304034	76.834328	549	26.275314	76.804352	876	26.287537	76.771083
223	26.303298	76.833821	550	26.275302	76.803377	877	26.288422	76.771122
224	26.302567	76.833341	551	26.274902	76.803854	878	26.287929	76.771601
225	26.301719	76.833212	552	26.274443	76.803710	879	26.287163	76.771882
226	26.300893	76.833389	553	26.273653	76.803433	880	26.286330	76.771571
227	26.300148	76.832918	554	26.273653	76.803054	881	26.285530	76.771911
228	26.299664	76.832095	555	26.274415	76.802684	882	26.284677	76.772100
229	26.298941	76.831689	556	26.274505	76.801814	883	26.283869	76.771751
230	26.298221	76.831127	557	26.274492	76.800911	884	26.282987	76.771784
231	26.297972	76.830440	558	26.273833	76.800540	885	26.282140	76.771917
232	26.297521	76.829880	559	26.274041	76.799600	886	26.281676	76.772749
233	26.297313	76.829113	560	26.274103	76.798689	887	26.281249	76.773604
234	26.297710	76.828326	561	26.274026	76.797826	888	26.280865	76.774489
235	26.298114	76.827598	562	26.274275	76.796990	889	26.280351	76.775282
236	26.298569	76.826780	563	26.274139	76.796077	890	26.280381	76.776234
237	26.299067	76.826068	564	26.273655	76.795262	891	26.280187	76.776993
238	26.298310	76.825774	565	26.273296	76.794376	892	26.280135	76.777892
239	26.297903	76.824913	566	26.272967	76.793462	893	26.280600	76.778626
240	26.297405	76.824466	567	26.272820	76.792549	894	26.280426	76.779586
241	26.297438	76.825422	568	26.272420	76.791697	895	26.280546	76.780524
242	26.297961	76.826209	569	26.271726	76.791274	896	26.280584	76.781502
243	26.297602	76.827016	570	26.271049	76.791056	897	26.280812	76.782450
244	26.297124	76.826538	571	26.271092	76.790131	898	26.281447	76.783079
245	26.296579	76.825781	572	26.270277	76.790009	899	26.282209	76.783582
246	26.296021	76.825794	573	26.269808	76.790792	900	26.282865	76.784227
247	26.295338	76.826053	574	26.269270	76.791577	901	26.282970	76.785087
248	26.295072	76.825120	575	26.269234	76.792561	902	26.283516	76.785713
249	26.295065	76.824133	576	26.269565	76.793462	903	26.284340	76.785441
250	26.294888	76.823219	577	26.269876	76.794365	904	26.284635	76.785939
251	26.294087	76.823165	578	26.270363	76.795189	905	26.284084	76.786637
252	26.293294	76.822876	579	26.270562	76.796105	906	26.283564	76.787072

253	26.293617	76.822117	580	26.270918	76.796807	907	26.282936	76.786667
254	26.293428	76.821174	581	26.270513	76.797103	908	26.283055	76.787526
255	26.293008	76.821770	582	26.270371	76.798005	909	26.282722	76.788427
256	26.292569	76.821457	583	26.271053	76.798541	910	26.282261	76.789252
257	26.291705	76.821349	584	26.271898	76.798834	911	26.281645	76.789958
258	26.291452	76.820820	585	26.272509	76.799405	912	26.281023	76.790603
259	26.292295	76.820506	586	26.271927	76.800049	913	26.280919	76.791579
260	26.292952	76.820021	587	26.271272	76.800541	914	26.281042	76.792556
261	26.292449	76.819311	588	26.271503	76.801441	915	26.281413	76.793427
262	26.291685	76.819643	589	26.270808	76.801875	916	26.281914	76.794243
263	26.291269	76.819466	590	26.270284	76.802444	917	26.282516	76.794904
264	26.290844	76.819734	591	26.270123	76.801756	918	26.282147	76.795618
265	26.290432	76.819485	592	26.269608	76.801285	919	26.281309	76.795391
266	26.289667	76.819082	593	26.269247	76.800388	920	26.280554	76.794896
267	26.288798	76.819279	594	26.268849	76.799511	921	26.279798	76.794424
268	26.288463	76.820105	595	26.268445	76.798633	922	26.279481	76.793517
269	26.288064	76.820895	596	26.268065	76.797741	923	26.279290	76.792570
270	26.288107	76.821826	597	26.267682	76.796851	924	26.279091	76.791617
271	26.288171	76.822810	598	26.267333	76.796921	925	26.278629	76.790848
272	26.287844	76.823597	599	26.267125	76.797815	926	26.278650	76.789870
273	26.287974	76.823838	600	26.267237	76.798737	927	26.278147	76.789112
274	26.288492	76.823906	601	26.267768	76.799188	928	26.277650	76.788399
275	26.288344	76.824799	602	26.266959	76.799210	929	26.277072	76.787692
276	26.288297	76.825768	603	26.266686	76.799599	930	26.276941	76.786728
277	26.287900	76.826429	604	26.266151	76.799120	931	26.277192	76.785926
278	26.288147	76.827339	605	26.266093	76.799479	932	26.277440	76.785188
279	26.288951	76.827559	606	26.266754	76.800025	933	26.276865	76.785572
280	26.289762	76.827711	607	26.266987	76.800824	934	26.276117	76.786097
281	26.290231	76.827962	608	26.266235	76.801312	935	26.275332	76.786476
282	26.290887	76.828415	609	26.265403	76.801144	936	26.275316	76.787438
283	26.291061	76.829092	610	26.264972	76.801875	937	26.275196	76.788382
284	26.291402	76.829257	611	26.264866	76.802812	938	26.275012	76.789337
285	26.292131	76.829545	612	26.264309	76.803573	939	26.275098	76.790291
286	26.292032	76.830312	613	26.263827	76.803411	940	26.275473	76.791186
287	26.292679	76.830240	614	26.263304	76.802613	941	26.275805	76.792099
288	26.292593	76.830623	615	26.263511	76.801796	942	26.276175	76.792979
289	26.292911	76.831155	616	26.264107	76.801071	943	26.276634	76.793818
290	26.293501	76.831533	617	26.263893	76.800898	944	26.277039	76.794688
291	26.293523	76.832247	618	26.263319	76.801523	945	26.277396	76.795548
292	26.292997	76.832622	619	26.262473	76.801803	946	26.277421	76.796532
293	26.292657	76.831756	620	26.261660	76.802154	947	26.277718	76.797459
294	26.291894	76.831461	621	26.261150	76.802836	948	26.278249	76.797002
295	26.291280	76.831022	622	26.261051	76.803391	949	26.278452	76.797391
296	26.291405	76.831705	623	26.260788	76.803850	950	26.278074	76.798231
297	26.290922	76.832087	624	26.260851	76.804816	951	26.277877	76.799168
298	26.291728	76.832398	625	26.260383	76.805610	952	26.277994	76.800145
299	26.291188	76.832796	626	26.259972	76.805199	953	26.277753	76.801034
300	26.291021	76.833455	627	26.260070	76.804220	954	26.277707	76.801982
301	26.291456	76.834174	628	26.260146	76.803298	955	26.277867	76.802938
302	26.291651	76.835104	629	26.259362	76.803201	956	26.277800	76.803915
303	26.291874	76.836052	630	26.259101	76.803335	957	26.277991	76.804856
304	26.291656	76.835974	631	26.258650	76.802819	958	26.278549	76.805622
305	26.291247	76.835149	632	26.258421	76.801931	959	26.278925	76.806514

306	26.290686	76.834704	633	26.259122	76.801577	960	26.279468	76.807271
307	26.290408	76.833820	634	26.259327	76.800690	961	26.280155	76.807886
308	26.290085	76.832992	635	26.260048	76.800144	962	26.280961	76.808302
309	26.290408	76.832260	636	26.260665	76.799441	963	26.281798	76.808336
310	26.290319	76.831609	637	26.261367	76.798854	964	26.282560	76.807827
311	26.290229	76.831185	638	26.261948	76.798108	965	26.283317	76.807384
312	26.289699	76.831504	639	26.261772	76.797228	966	26.283263	76.808220
313	26.289632	76.830599	640	26.262476	76.796821	967	26.283272	76.809191
314	26.289593	76.829630	641	26.263138	76.796541	968	26.284027	76.809578
315	26.289037	76.828902	642	26.263827	76.797026	969	26.284747	76.810126
316	26.288219	76.828617	643	26.263761	76.796514	970	26.285454	76.810711
317	26.288081	76.829190	644	26.263190	76.796064	971	26.286271	76.811099
318	26.288789	76.829615	645	26.262521	76.796005	972	26.287018	76.811604
319	26.288637	76.829881	646	26.262302	76.796857	973	26.287838	76.811900
320	26.287824	76.829639	647	26.261827	76.796727	974	26.288643	76.812275
321	26.287309	76.828918	648	26.261469	76.797577	975	26.288768	76.812968
322	26.287087	76.828162	649	26.260844	76.798242	976	26.288592	76.813699
323	26.286817	76.828342	650	26.260336	76.798343	977	26.289426	76.813764
324	26.287145	76.828888	651	26.261007	76.797717	978	26.288953	76.814395
325	26.287527	76.829755	652	26.260881	76.797052	979	26.289362	76.814840
326	26.287776	76.830683	653	26.261440	76.796581	980	26.290030	76.814804
327	26.287158	76.831050	654	26.261236	76.796293	981	26.290406	76.814192

Details of Catchment Area/Zone of Influence of Kalisil Dam Wetland falling within the boundary limit of Karauli, Rajasthan:- Total Area Of = 763.14 Ha

The geo-coordinates of Kalisil Dam Wetland and its Zone of influence of Kalisil Dam

Kalisil Dam								
S.no	Latitude	Longitude	S.no	Latitude	Longitude	S.no	Latitude	Longitude
1	26.314439	76.843812	207	26.276187	76.814413	413	26.289952	76.768689
2	26.313672	76.844258	208	26.275976	76.813462	414	26.289900	76.769673
3	26.312948	76.844703	209	26.275887	76.812490	415	26.289405	76.770450
4	26.312097	76.844763	210	26.275989	76.811513	416	26.289350	76.771257
5	26.311376	76.845027	211	26.275701	76.811006	417	26.289074	76.772157
6	26.310775	76.845716	212	26.275305	76.811871	418	26.288296	76.772602
7	26.310268	76.846303	213	26.274510	76.812223	419	26.287470	76.772902
8	26.309711	76.847051	214	26.273708	76.811879	420	26.286615	76.772693
9	26.308954	76.847488	215	26.272830	76.811904	421	26.285841	76.772871
10	26.308133	76.847166	216	26.272103	76.811389	422	26.284976	76.773065
11	26.307478	76.846560	217	26.271668	76.810547	423	26.284112	76.772924
12	26.307135	76.845677	218	26.271601	76.809591	424	26.283268	76.772764
13	26.307569	76.844863	219	26.272242	76.808949	425	26.282537	76.773122
14	26.308158	76.844148	220	26.272885	76.808527	426	26.282104	76.773974
15	26.308836	76.843530	221	26.273543	76.807911	427	26.281707	76.774850
16	26.309307	76.842939	222	26.274365	76.807717	428	26.281205	76.775658
17	26.308858	76.842123	223	26.274200	76.806837	429	26.281431	76.776570
18	26.308205	76.841501	224	26.273482	76.806297	430	26.281096	76.777456
19	26.307595	76.840906	225	26.273207	76.805380	431	26.281459	76.778321
20	26.307120	76.840111	226	26.273613	76.804548	432	26.281428	76.779299
21	26.306591	76.839334	227	26.273120	76.804363	433	26.281398	76.780243
22	26.306424	76.838407	228	26.272509	76.803676	434	26.281465	76.781219
23	26.305769	76.837744	229	26.272503	76.802715	435	26.281724	76.782118

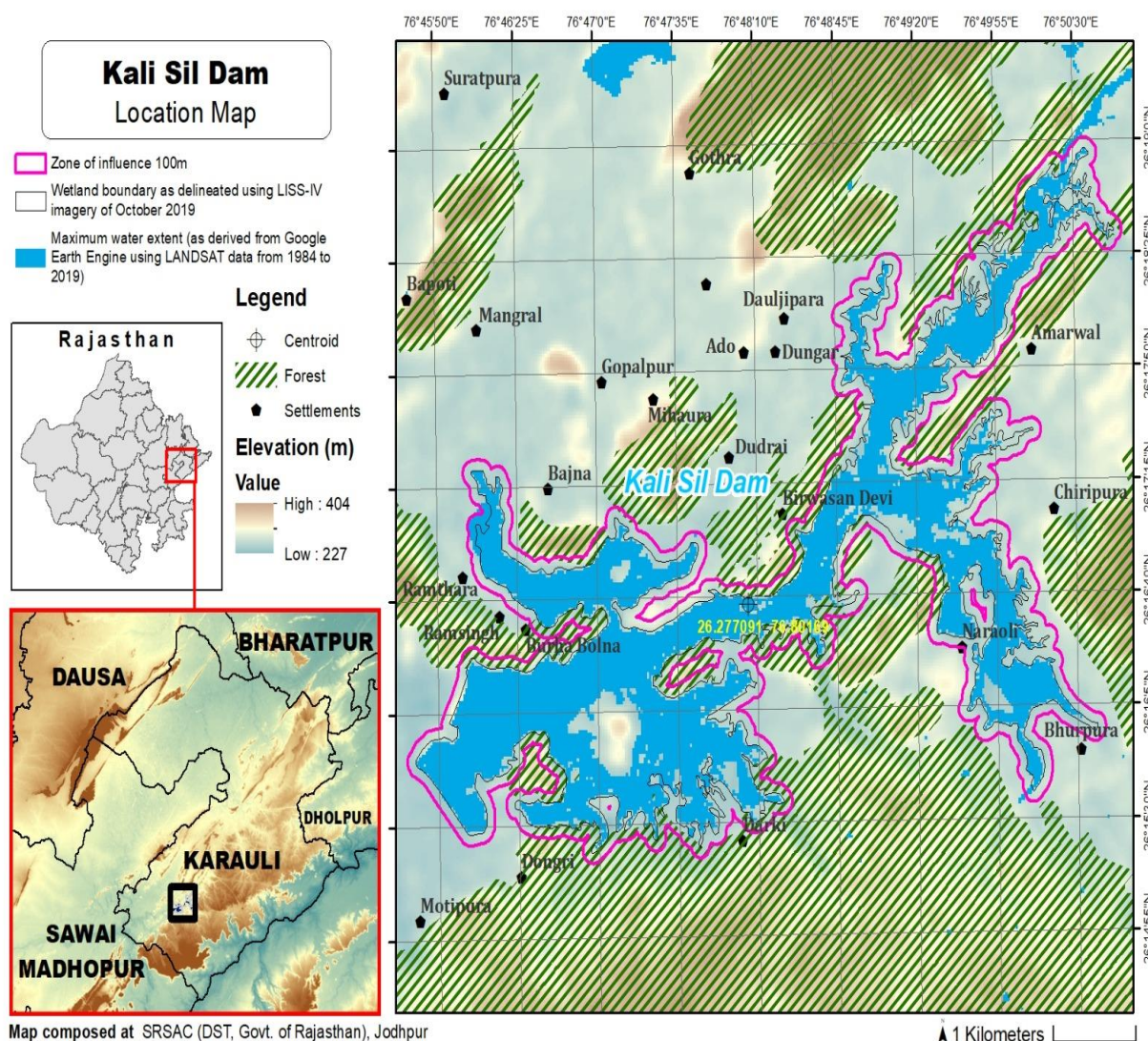
24	26.304976	76.837330	230	26.273192	76.802157	436	26.282493	76.782613
25	26.304511	76.836494	231	26.273324	76.801474	437	26.283164	76.783251
26	26.304036	76.835662	232	26.272936	76.800609	438	26.283817	76.783901
27	26.303363	76.835141	233	26.272372	76.800998	439	26.284268	76.784449
28	26.302619	76.834641	234	26.272310	76.801970	440	26.285140	76.784616
29	26.301894	76.834239	235	26.271695	76.802652	441	26.285660	76.785371
30	26.301035	76.834402	236	26.271024	76.803156	442	26.285507	76.786325
31	26.300167	76.834207	237	26.270219	76.803478	443	26.284943	76.787056
32	26.299486	76.833578	238	26.269418	76.803075	444	26.284489	76.787884
33	26.298986	76.832765	239	26.269066	76.802214	445	26.283725	76.788302
34	26.298198	76.832375	240	26.268670	76.801377	446	26.283380	76.789207
35	26.297503	76.831759	241	26.268294	76.800484	447	26.282859	76.789992
36	26.296970	76.830985	242	26.267965	76.800603	448	26.282241	76.790697
37	26.296569	76.830130	243	26.267639	76.801496	449	26.281804	76.791468
38	26.296325	76.829206	244	26.266905	76.802036	450	26.281926	76.792445
39	26.296731	76.828362	245	26.266075	76.802347	451	26.282395	76.793274
40	26.296556	76.827499	246	26.265733	76.803124	452	26.283027	76.793949
41	26.295985	76.827072	247	26.265241	76.803943	453	26.283401	76.794804
42	26.295114	76.827109	248	26.264564	76.804578	454	26.283327	76.795777
43	26.294493	76.826428	249	26.263721	76.804790	455	26.282729	76.796469
44	26.294233	76.825486	250	26.263063	76.804188	456	26.281860	76.796625
45	26.294170	76.824505	251	26.262671	76.803323	457	26.281012	76.796343
46	26.293558	76.824076	252	26.262151	76.803179	458	26.280256	76.795836
47	26.292745	76.823696	253	26.261983	76.804109	459	26.279452	76.795429
48	26.292351	76.822852	254	26.261726	76.804992	460	26.278932	76.794654
49	26.291678	76.822349	255	26.261388	76.805879	461	26.278602	76.793744
50	26.290848	76.822068	256	26.260756	76.806571	462	26.278413	76.792793
51	26.290410	76.821248	257	26.259902	76.806716	463	26.278086	76.791931
52	26.290115	76.820410	258	26.259213	76.806128	464	26.277748	76.791042
53	26.289362	76.820169	259	26.259078	76.805161	465	26.277694	76.790111
54	26.289123	76.821081	260	26.258925	76.804455	466	26.277256	76.789289
55	26.289008	76.821942	261	26.258181	76.803993	467	26.276552	76.788697
56	26.289102	76.822908	262	26.257769	76.803124	468	26.276191	76.788189
57	26.289427	76.823800	263	26.257470	76.802210	469	26.275937	76.789123
58	26.289267	76.824745	264	26.257693	76.801262	470	26.275989	76.790075
59	26.289250	76.825718	265	26.258351	76.800635	471	26.276363	76.790970
60	26.288870	76.826570	266	26.258835	76.799822	472	26.276676	76.791891
61	26.289731	76.826642	267	26.259393	76.799426	473	26.277115	76.792735
62	26.290600	76.826674	268	26.258532	76.799423	474	26.277523	76.793607
63	26.291160	76.827398	269	26.257952	76.798725	475	26.278013	76.794416
64	26.291860	76.827980	270	26.257088	76.798558	476	26.278267	76.795347
65	26.292520	76.828603	271	26.256563	76.797786	477	26.278807	76.795879
66	26.293075	76.829350	272	26.256622	76.796820	478	26.279298	76.796651
67	26.293654	76.830047	273	26.255856	76.796436	479	26.279356	76.797636
68	26.294243	76.830702	274	26.255434	76.795610	480	26.278990	76.798508
69	26.294425	76.831626	275	26.255737	76.794716	481	26.278805	76.799421
70	26.294400	76.832599	276	26.256370	76.794140	482	26.278915	76.800400
71	26.293970	76.833418	277	26.256837	76.793317	483	26.278673	76.801328
72	26.293134	76.833697	278	26.257469	76.792709	484	26.278717	76.802241
73	26.292337	76.833460	279	26.257967	76.791899	485	26.278723	76.803220
74	26.292476	76.834288	280	26.258028	76.791273	486	26.278700	76.804201
75	26.292630	76.835249	281	26.257141	76.791350	487	26.279236	76.804977
76	26.292785	76.836219	282	26.256340	76.790977	488	26.279647	76.805849

77	26.292488	76.837119	283	26.256085	76.790062	489	26.280152	76.806635
78	26.291675	76.837407	284	26.256451	76.789186	490	26.280882	76.807179
79	26.290953	76.836902	285	26.257150	76.788663	491	26.281676	76.807266
80	26.290699	76.835972	286	26.257654	76.787886	492	26.282388	76.806686
81	26.290001	76.835407	287	26.257184	76.787154	493	26.283230	76.806392
82	26.289632	76.834531	288	26.257012	76.786202	494	26.284049	76.806705
83	26.289322	76.833634	289	26.256871	76.785264	495	26.284364	76.807603
84	26.289196	76.832669	290	26.256244	76.784642	496	26.284109	76.808542
85	26.288814	76.831866	291	26.255717	76.783850	497	26.284875	76.808953
86	26.288623	76.831037	292	26.255208	76.783051	498	26.285551	76.809594
87	26.288120	76.831834	293	26.255165	76.782091	499	26.286329	76.810051
88	26.287305	76.832149	294	26.255725	76.781367	500	26.287141	76.810454
89	26.286513	76.831739	295	26.256596	76.781325	501	26.287954	76.810821
90	26.286074	76.830911	296	26.257349	76.781824	502	26.288771	76.811190
91	26.285554	76.830146	297	26.257144	76.781300	503	26.289467	76.811786
92	26.284811	76.829604	298	26.257143	76.780337	504	26.289885	76.812622
93	26.284253	76.828870	299	26.257382	76.779391	505	26.290422	76.813125
94	26.283637	76.829455	300	26.257425	76.778434	506	26.291142	76.813632
95	26.283744	76.830393	301	26.257244	76.777477	507	26.291483	76.814461
96	26.284021	76.831317	302	26.257356	76.776521	508	26.292290	76.814792
97	26.283811	76.832272	303	26.257387	76.775542	509	26.293017	76.815341
98	26.283455	76.833164	304	26.257648	76.774601	510	26.293741	76.814964
99	26.282661	76.833537	305	26.258092	76.773756	511	26.294599	76.815034
100	26.281793	76.833374	306	26.258808	76.773203	512	26.295091	76.815537
101	26.280935	76.833260	307	26.259268	76.772417	513	26.295303	76.814774
102	26.280067	76.833422	308	26.260084	76.772081	514	26.294997	76.813866
103	26.280355	76.833920	309	26.260937	76.772262	515	26.295023	76.812907
104	26.280701	76.834809	310	26.261471	76.773038	516	26.295673	76.812275
105	26.280420	76.835710	311	26.261442	76.774005	517	26.296533	76.812352
106	26.279630	76.836092	312	26.261239	76.774931	518	26.297338	76.812726
107	26.278913	76.836633	313	26.261529	76.775838	519	26.298062	76.812230
108	26.278109	76.837005	314	26.261238	76.776754	520	26.298904	76.812430
109	26.277319	76.836663	315	26.261311	76.777708	521	26.299274	76.813294
110	26.276512	76.836325	316	26.262088	76.778176	522	26.300048	76.813679
111	26.276040	76.836301	317	26.262749	76.777922	523	26.300845	76.813360
112	26.275837	76.837249	318	26.263259	76.777122	524	26.301219	76.812484
113	26.275107	76.837743	319	26.263650	76.776272	525	26.302048	76.812266
114	26.274850	76.838483	320	26.264449	76.775921	526	26.302756	76.812810
115	26.274211	76.839109	321	26.265261	76.776279	527	26.303101	76.813704
116	26.273369	76.838922	322	26.265480	76.775427	528	26.303481	76.814589
117	26.272763	76.839045	323	26.265181	76.774606	529	26.304258	76.814546
118	26.272165	76.839719	324	26.264598	76.774260	530	26.304866	76.815211
119	26.271316	76.839591	325	26.263733	76.774219	531	26.304937	76.816184
120	26.270525	76.839821	326	26.263112	76.773580	532	26.305453	76.816778
121	26.269783	76.840347	327	26.262441	76.772949	533	26.306143	76.817362
122	26.269080	76.840922	328	26.262017	76.772102	534	26.306859	76.817901
123	26.268432	76.841595	329	26.261840	76.771141	535	26.307084	76.818849
124	26.267972	76.842438	330	26.261485	76.770262	536	26.306979	76.819821
125	26.267506	76.843278	331	26.261064	76.769975	537	26.306384	76.820520
126	26.267267	76.844209	332	26.260272	76.770409	538	26.305507	76.820550
127	26.266656	76.844869	333	26.259399	76.770579	539	26.304722	76.820116
128	26.265792	76.844850	334	26.258511	76.770584	540	26.303906	76.820089
129	26.265079	76.844285	335	26.257688	76.770255	541	26.303028	76.820064

130	26.264931	76.843354	336	26.257081	76.769553	542	26.302448	76.819370
131	26.265367	76.842498	337	26.256897	76.768599	543	26.301975	76.818657
132	26.265738	76.841603	338	26.256783	76.767625	544	26.301113	76.818537
133	26.266133	76.840719	339	26.257044	76.766700	545	26.300573	76.817786
134	26.266480	76.839811	340	26.257716	76.766056	546	26.300196	76.817429
135	26.267027	76.839034	341	26.258399	76.765424	547	26.299365	76.817681
136	26.267407	76.838264	342	26.259083	76.764793	548	26.298503	76.817633
137	26.267213	76.837308	343	26.259770	76.764166	549	26.298526	76.818458
138	26.266807	76.836513	344	26.260456	76.763538	550	26.298377	76.819415
139	26.265988	76.836130	345	26.261139	76.762906	551	26.298105	76.820235
140	26.265420	76.836645	346	26.261822	76.762273	552	26.298462	76.821103
141	26.264964	76.837449	347	26.262413	76.761543	553	26.298996	76.821680
142	26.264308	76.838102	348	26.262863	76.760695	554	26.299775	76.821643
143	26.263445	76.838327	349	26.263578	76.760133	555	26.300532	76.822080
144	26.262564	76.838406	350	26.264455	76.760125	556	26.301097	76.822484
145	26.261690	76.838233	351	26.265197	76.760664	557	26.301873	76.822922
146	26.260925	76.837733	352	26.265872	76.761299	558	26.302439	76.823655
147	26.260270	76.837075	353	26.266414	76.762081	559	26.302819	76.824498
148	26.259748	76.836299	354	26.266763	76.762971	560	26.303235	76.825353
149	26.259979	76.835389	355	26.266916	76.763942	561	26.303266	76.826320
150	26.260748	76.834902	356	26.267562	76.764263	562	26.303456	76.826887
151	26.261617	76.834843	357	26.268363	76.764691	563	26.304342	76.826841
152	26.262275	76.834219	358	26.269159	76.765130	564	26.305209	76.827057
153	26.263141	76.834345	359	26.269959	76.765561	565	26.306027	76.827444
154	26.263931	76.833941	360	26.270767	76.765975	566	26.306659	76.828123
155	26.264649	76.833360	361	26.271584	76.766306	567	26.306694	76.829072
156	26.265386	76.833021	362	26.272453	76.766470	568	26.306840	76.829557
157	26.265644	76.832099	363	26.273241	76.766918	569	26.307552	76.829037
158	26.265344	76.831254	364	26.273759	76.767705	570	26.308405	76.829199
159	26.265053	76.830335	365	26.273707	76.768674	571	26.308791	76.830050
160	26.265348	76.829422	366	26.273216	76.769464	572	26.308782	76.831026
161	26.266148	76.829041	367	26.272838	76.770354	573	26.309138	76.831706
162	26.266960	76.829377	368	26.272892	76.771338	574	26.309586	76.832535
163	26.266813	76.828863	369	26.272964	76.772322	575	26.309480	76.833503
164	26.266785	76.827890	370	26.272879	76.773286	576	26.309197	76.834171
165	26.267373	76.827178	371	26.272605	76.774219	577	26.310054	76.834391
166	26.268230	76.827192	372	26.272784	76.775101	578	26.310874	76.834575
167	26.269012	76.827530	373	26.273392	76.775820	579	26.311750	76.834714
168	26.269823	76.827888	374	26.273933	76.776601	580	26.312595	76.835016
169	26.270659	76.828096	375	26.274041	76.777544	581	26.313257	76.835665
170	26.271486	76.828033	376	26.274247	76.778450	582	26.313625	76.836546
171	26.272333	76.827850	377	26.274260	76.779399	583	26.314220	76.837269
172	26.273065	76.827683	378	26.274231	76.780250	584	26.314789	76.837993
173	26.273142	76.826703	379	26.274786	76.780991	585	26.315357	76.838738
174	26.273364	76.825758	380	26.275087	76.781920	586	26.315440	76.839685
175	26.273422	76.824784	381	26.275314	76.782101	587	26.314900	76.840425
176	26.273730	76.823887	382	26.275403	76.781128	588	26.315526	76.841064
177	26.274531	76.823504	383	26.275965	76.780389	589	26.316181	76.841684
178	26.275409	76.823592	384	26.275738	76.779590	590	26.316756	76.842420
179	26.276257	76.823886	385	26.275124	76.778926	591	26.316776	76.843385
180	26.277141	76.823979	386	26.274634	76.778115	592	26.316259	76.844178
181	26.277957	76.824319	387	26.274525	76.777147	593	26.315452	76.844489
182	26.278774	76.824387	388	26.274787	76.776216	594	26.272882	76.795776

183	26.279639	76.824238	389	26.275317	76.775436	595	26.272507	76.794893
184	26.280093	76.823571	390	26.276105	76.774990	596	26.272198	76.793971
185	26.280505	76.822698	391	26.276400	76.774095	597	26.272026	76.793022
186	26.280690	76.821746	392	26.276864	76.773253	598	26.271566	76.792250
187	26.280906	76.820789	393	26.277309	76.772401	599	26.270728	76.791982
188	26.281242	76.819880	394	26.278033	76.771851	600	26.270141	76.792012
189	26.281684	76.819029	395	26.278407	76.770989	601	26.270331	76.792949
190	26.282380	76.818416	396	26.278780	76.770094	602	26.270657	76.793848
191	26.282997	76.817725	397	26.279126	76.769201	603	26.271125	76.794682
192	26.283452	76.816877	398	26.279805	76.768571	604	26.271476	76.795582
193	26.283684	76.815989	399	26.280627	76.768210	605	26.271786	76.796440
194	26.283100	76.815259	400	26.281508	76.768113	606	26.271891	76.797392
195	26.282599	76.814518	401	26.282245	76.767730	607	26.272280	76.797937
196	26.281897	76.813958	402	26.283113	76.767666	608	26.273050	76.798409
197	26.281095	76.813554	403	26.283989	76.767657	609	26.273135	76.797435
198	26.280341	76.813039	404	26.284842	76.767827	610	26.273322	76.796510
199	26.279465	76.813142	405	26.285281	76.768657	611	26.259865	76.784404
200	26.278817	76.813121	406	26.285547	76.769487	612	26.276035	76.830487
201	26.278601	76.813837	407	26.286097	76.768807	613	26.276470	76.829931
202	26.279047	76.814673	408	26.286674	76.768089	614	26.277104	76.829263
203	26.278882	76.815622	409	26.287547	76.767937	615	26.277966	76.829139
204	26.278144	76.816127	410	26.288218	76.767325	616	26.277568	76.828787
205	26.277321	76.815828	411	26.289076	76.767171	617	26.276785	76.828966
206	26.276622	76.815263	412	26.289757	76.767739	618	26.276376	76.829805
						619	26.275599	76.830236

The detailed Map of Kalisil Dam Wetland and its Zone of Influence is annexed herewith as Schedule-I ('A').



Schedule-II

Prohibited Activities in Kalisil Dam Wetland :-

1. Conversion for non wetland uses including encroachments of any kind;
2. Setting up of any new industry and expansion of existing industries;
3. Manufacture or/and handling or/and storage or/and disposal of construction and demolition waste covered under the Construction and Demolition Waste Management Rules, 2016; hazardous substances covered under the Manufacture, Storage and Import of Hazardous Chemical Rules, 1989 or the Rules for Manufacture, Use, Import, Export and Storage of Hazardous Microorganism Genetically Engineered or cells, 1989 or the Hazardous Waste (Management, Handling and Transboundary Movement) Rules, 2008; electronic waste covered under the E-Waste (Management) Rules 2016; plastic waste covered under Plastic Waste (Management) Rules, 2016;
4. Solid waste storage and disposal;
5. Discharge of untreated waste and effluents from industries, cities, towns, villages and other human settlements;

6. Any construction of permanent nature except for boat jetties within fifty metres from the mean high flood level observed in the past ten years calculated from the date of commencement of these rules;
7. Commercial mining, stone quarrying and crushing units
8. Commercial water extraction Establishment of large scale commercial livestock and poultry farms;
9. Reducing area/ capacity of the water body;
10. Feeding of fishes and migratory birds by the public;
11. Any type of poaching.

Prohibited Activities in Catchment Area/Zone of Influence :-

1. Discharge of untreated Solid/liquid waste and effluents;
2. Manufacture or/and handling or/and storage or/and disposal of construction and demolition waste covered under the Construction and Demolition Waste Management Rules, 2016; hazardous substances covered under the Manufacture, Storage and Import of Hazardous Chemical Rules, 1989 or the Rules for Manufacture, Use, Import, Export and Storage of Hazardous Microorganism Genetically Engineered organized or cells, 1989 or the Hazardous Waste (Management, Handling and Transboundary Movement) Rules, 2008; electronic waste covered under the E-Waste (Management) Rules 2016; plastic waste covered under Plastic Waste (Management) Rules, 2016;
3. Extraction of commercial water including groundwater.
4. Any type of poaching;

Schedule-III

Regulated Activities in Kalisil Dam Wetland :-

1. Fisheries;
2. Plying of boats;
3. Desilting;
4. Construction of temporary structures;
5. Water extraction for certain purposes.

Regulated Activities in Catchment Area/Zone of Influence :-

1. Conversion of land for any type of construction;
2. Setting up of any new industries and expansion of existing industries;
3. Mining.

[F.No.6 (3) Env/2023]

By order of the Governor,

Shikhar Agrawal,
Additional Chief Secretary to the Government.

Government Central Press, Jaipur.