


| | | |
|---|--|--|
|  सत्यमेव जयते | राजस्थान राजपत्र विशेषांक | RAJASTHAN GAZETTE Extraordinary |
| | साधिकार प्रकाशित | Published by Authority |
| | फाल्गुन 10, गुरुवार, शाके 1945-फरवरी 29, 2024 <i>Phalguna 10 Thursday, Saka 1945- February 29, 2024</i> | |

भाग 4 (ग)

उप-खण्ड(II)

राज्य सरकार तथा अन्य राज्य प्राधिकारियों द्वारा जारी किये गये कानूनी आदेश तथा
अधिसूचनाएं।

Department of Environment and Climate Change
Notification

Jaipur, February 19, 2024

S.O.565 .-Whereas the draft notification of the Orai Dam wetland, situated in village Gopal, Tehsil Begun, district Chittorgarh Rajasthan was published as required by rule 7 of the Wetland (Conservation and Management) Rules, 2017 read with the Environment (Protection) Act, 1986 (Central Act No. 29 of 1986), vide notification number F.No.6(3)Env/2023 dated 24.08.2023 in the Rajasthan Gazette, Extraordinary, Part 4 (ga), sub-part (I) G.S.R.123 dated 06.09.2023, inviting objections and suggestions from all persons likely to be affected thereby before expiry of the period of sixty days from the date on which the copies of the said notification were made available to the public.

And whereas, copies of the Gazette in which the said notification was published were made available to the public on the 06.09.2023.

And whereas, no objections and suggestions were received on the said Draft Notification.

Now therefore, in exercise of the powers conferred by rule 7 of the Wetland (Conservation and Management) Rules, 2017 read with provisions of the Environment (Protection) Act, 1986 (Central Act No. 29 of 1986), the State Government hereby notifies Orai Dam wetland, situated in village Gopal, Tehsil Begun, district Chittorgarh Rajasthan as a wetland and that,-

- (i) the extent of the wetland /wetland complex and its zone of influence shall be as described in Schedule-I of this notification;
- (ii) the activities prohibited within the wetland and its zone of influence shall be as listed in Schedule-II of this notification;
- (iii) the activities regulated within the wetland and its zone of influence, i.e. permitted only with permission of the State Government shall be as listed in Schedule-III of this notification. Request for permission for regulated activities may be made to the District Environment Committee headed by the District Collector; and
- (iv) the State Wetland Authority, Rajasthan shall monitor the enforcement of the provisions of this notification.

Schedule-I
Orai Dam Wetland comprising of total area of 608.71 Hectare within the following
boundary delineation:-
The geo-coordinates of Orai Dam Wetland of Chittorgarh, Rajasthan

| Orai Dam | | | | | | | | |
|----------|-----------|-----------|-------|-----------|-----------|-------|-----------|-----------|
| S.No. | Latitude | Longitude | S.No. | Latitude | Longitude | S.No. | Latitude | Longitude |
| 1 | 25.027342 | 74.839424 | 70 | 25.007940 | 74.849816 | 139 | 24.977622 | 74.844047 |
| 2 | 25.028228 | 74.839529 | 71 | 25.007734 | 74.850256 | 140 | 24.978462 | 74.844362 |
| 3 | 25.029111 | 74.839675 | 72 | 25.007014 | 74.850686 | 141 | 24.979251 | 74.844817 |
| 4 | 25.029994 | 74.839821 | 73 | 25.006293 | 74.851213 | 142 | 24.979953 | 74.845412 |
| 5 | 25.030873 | 74.839992 | 74 | 25.005584 | 74.851778 | 143 | 24.980839 | 74.845437 |
| 6 | 25.031738 | 74.840229 | 75 | 25.005611 | 74.852720 | 144 | 24.981732 | 74.845435 |
| 7 | 25.032603 | 74.840468 | 76 | 25.005613 | 74.853687 | 145 | 24.982355 | 74.845975 |
| 8 | 25.033480 | 74.840652 | 77 | 25.005375 | 74.854628 | 146 | 24.982948 | 74.846417 |
| 9 | 25.034369 | 74.840731 | 78 | 25.004708 | 74.854251 | 147 | 24.983838 | 74.846497 |
| 10 | 25.035261 | 74.840788 | 79 | 25.003936 | 74.853786 | 148 | 24.984724 | 74.846618 |
| 11 | 25.036151 | 74.840782 | 80 | 25.003290 | 74.853113 | 149 | 24.985605 | 74.846776 |
| 12 | 25.037042 | 74.840712 | 81 | 25.002512 | 74.852681 | 150 | 24.986487 | 74.846928 |
| 13 | 25.037927 | 74.840735 | 82 | 25.002146 | 74.851944 | 151 | 24.987373 | 74.847049 |
| 14 | 25.037947 | 74.841563 | 83 | 25.001503 | 74.851396 | 152 | 24.988262 | 74.847057 |
| 15 | 25.037382 | 74.842321 | 84 | 25.000636 | 74.851174 | 153 | 24.989098 | 74.846780 |
| 16 | 25.036839 | 74.843099 | 85 | 24.999812 | 74.850815 | 154 | 24.989733 | 74.846097 |
| 17 | 25.036404 | 74.843952 | 86 | 24.998957 | 74.850545 | 155 | 24.990503 | 74.845600 |
| 18 | 25.036229 | 74.844889 | 87 | 24.998074 | 74.850492 | 156 | 24.991321 | 74.845210 |
| 19 | 25.036335 | 74.845862 | 88 | 24.997184 | 74.850579 | 157 | 24.992168 | 74.844904 |
| 20 | 25.036483 | 74.846828 | 89 | 24.996375 | 74.850892 | 158 | 24.993049 | 74.844791 |
| 21 | 25.036662 | 74.847788 | 90 | 24.996949 | 74.851376 | 159 | 24.993928 | 74.844739 |
| 22 | 25.036870 | 74.848740 | 91 | 24.996754 | 74.851964 | 160 | 24.994334 | 74.843984 |
| 23 | 25.037109 | 74.849667 | 92 | 24.995882 | 74.852171 | 161 | 24.993804 | 74.843407 |
| 24 | 25.036831 | 74.850568 | 93 | 24.995008 | 74.852296 | 162 | 24.992928 | 74.843578 |
| 25 | 25.036233 | 74.850956 | 94 | 24.994143 | 74.852084 | 163 | 24.992061 | 74.843810 |
| 26 | 25.035808 | 74.850221 | 95 | 24.993267 | 74.852179 | 164 | 24.991213 | 74.843571 |
| 27 | 25.034959 | 74.849922 | 96 | 24.992385 | 74.852240 | 165 | 24.990933 | 74.842754 |
| 28 | 25.034076 | 74.849783 | 97 | 24.991565 | 74.851880 | 166 | 24.991735 | 74.842438 |
| 29 | 25.033188 | 74.849675 | 98 | 24.990722 | 74.851586 | 167 | 24.992233 | 74.841828 |
| 30 | 25.032301 | 74.849567 | 99 | 24.989840 | 74.851452 | 168 | 24.992632 | 74.841087 |
| 31 | 25.031414 | 74.849455 | 100 | 24.988948 | 74.851493 | 169 | 24.993262 | 74.840452 |
| 32 | 25.030529 | 74.849326 | 101 | 24.988104 | 74.851239 | 170 | 24.994133 | 74.840514 |
| 33 | 25.029668 | 74.849067 | 102 | 24.987360 | 74.850697 | 171 | 24.994868 | 74.841058 |
| 34 | 25.028786 | 74.848914 | 103 | 24.986563 | 74.850266 | 172 | 24.995746 | 74.841110 |
| 35 | 25.027927 | 74.848652 | 104 | 24.985706 | 74.850000 | 173 | 24.996638 | 74.841055 |
| 36 | 25.027045 | 74.848507 | 105 | 24.984819 | 74.849891 | 174 | 24.997525 | 74.840950 |
| 37 | 25.026157 | 74.848423 | 106 | 24.983938 | 74.849739 | 175 | 24.998411 | 74.840826 |
| 38 | 25.025327 | 74.848080 | 107 | 24.983187 | 74.850090 | 176 | 24.999289 | 74.840669 |
| 39 | 25.024653 | 74.847447 | 108 | 24.982608 | 74.849525 | 177 | 25.000174 | 74.840582 |
| 40 | 25.024640 | 74.846525 | 109 | 24.981987 | 74.848825 | 178 | 25.001067 | 74.840543 |
| 41 | 25.024533 | 74.845793 | 110 | 24.981180 | 74.848417 | 179 | 25.001959 | 74.840497 |
| 42 | 25.023647 | 74.845911 | 111 | 24.980310 | 74.848202 | 180 | 25.002848 | 74.840412 |
| 43 | 25.022803 | 74.846214 | 112 | 24.979441 | 74.847978 | 181 | 25.003738 | 74.840326 |
| 44 | 25.021975 | 74.846569 | 113 | 24.978598 | 74.847656 | 182 | 25.004627 | 74.840241 |
| 45 | 25.021109 | 74.846808 | 114 | 24.977755 | 74.847333 | 183 | 25.005513 | 74.840117 |
| 46 | 25.020439 | 74.847366 | 115 | 24.976895 | 74.847067 | 184 | 25.006395 | 74.839964 |
| 47 | 25.021046 | 74.847844 | 116 | 24.976078 | 74.846690 | 185 | 25.007278 | 74.839822 |

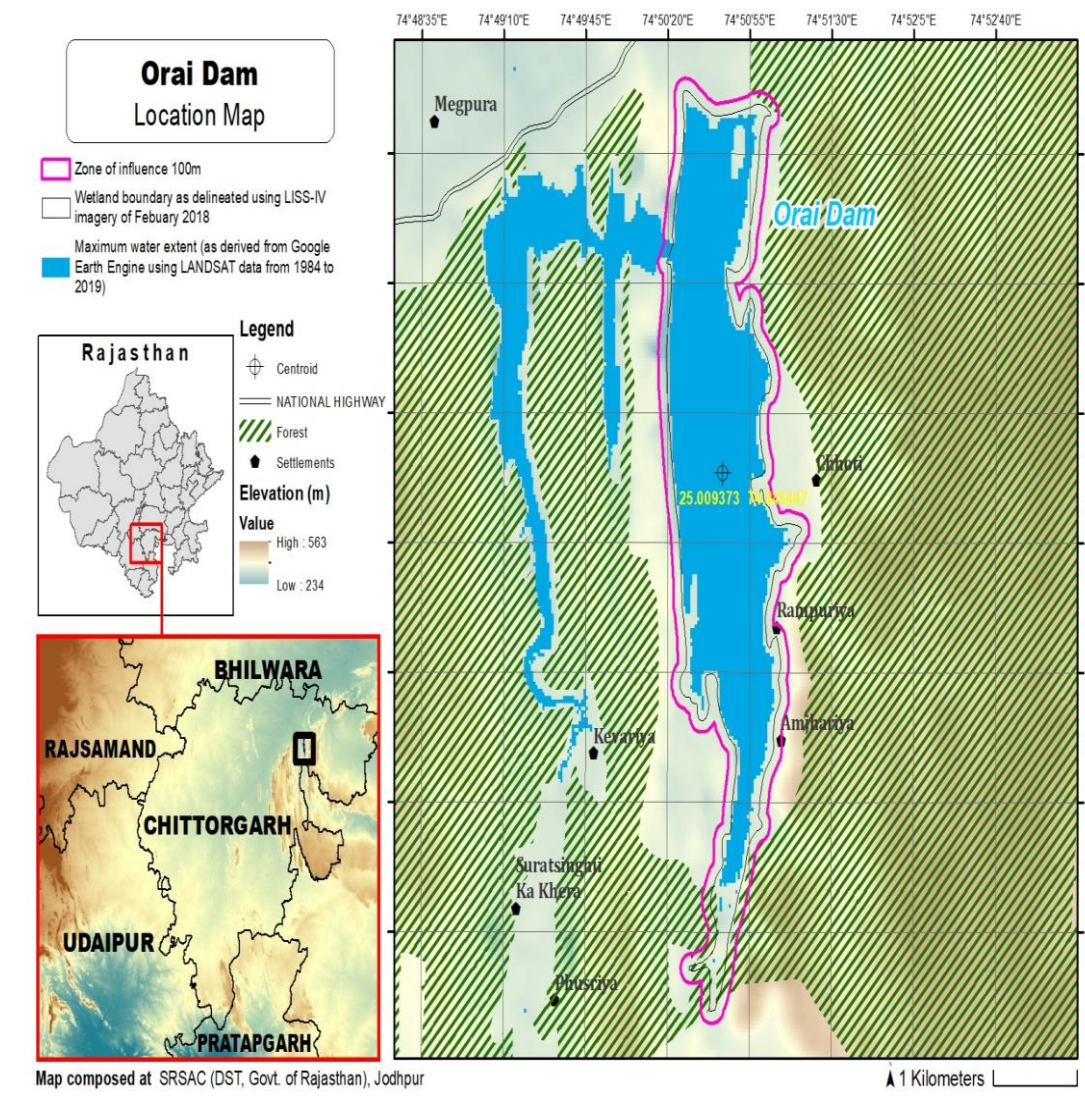
| | | | | | | | | |
|----|-----------|-----------|-----|-----------|-----------|-----|-----------|-----------|
| 48 | 25.021837 | 74.848276 | 117 | 24.975228 | 74.846388 | 186 | 25.008164 | 74.839696 |
| 49 | 25.022534 | 74.848755 | 118 | 24.974377 | 74.846095 | 187 | 25.009049 | 74.839570 |
| 50 | 25.021780 | 74.849157 | 119 | 24.973490 | 74.845983 | 188 | 25.009935 | 74.839444 |
| 51 | 25.020896 | 74.849057 | 120 | 24.972609 | 74.845822 | 189 | 25.010821 | 74.839321 |
| 52 | 25.020044 | 74.849181 | 121 | 24.971731 | 74.845644 | 190 | 25.011710 | 74.839235 |
| 53 | 25.019279 | 74.849679 | 122 | 24.970885 | 74.845331 | 191 | 25.012600 | 74.839149 |
| 54 | 25.018592 | 74.850304 | 123 | 24.970049 | 74.844986 | 192 | 25.013489 | 74.839063 |
| 55 | 25.017845 | 74.850818 | 124 | 24.969243 | 74.844581 | 193 | 25.014379 | 74.838977 |
| 56 | 25.016995 | 74.851109 | 125 | 24.969308 | 74.843896 | 194 | 25.015268 | 74.838891 |
| 57 | 25.016121 | 74.851093 | 126 | 24.970200 | 74.843943 | 195 | 25.016159 | 74.838827 |
| 58 | 25.015403 | 74.850663 | 127 | 24.971092 | 74.843979 | 196 | 25.017051 | 74.838791 |
| 59 | 25.014777 | 74.850076 | 128 | 24.971977 | 74.843900 | 197 | 25.017944 | 74.838755 |
| 60 | 25.013907 | 74.849868 | 129 | 24.972297 | 74.843174 | 198 | 25.018836 | 74.838749 |
| 61 | 25.013014 | 74.849841 | 130 | 24.972106 | 74.842223 | 199 | 25.019726 | 74.838819 |
| 62 | 25.012123 | 74.849886 | 131 | 24.972394 | 74.841526 | 200 | 25.020612 | 74.838944 |
| 63 | 25.011242 | 74.850040 | 132 | 24.972608 | 74.842428 | 201 | 25.021498 | 74.839068 |
| 64 | 25.010384 | 74.850307 | 133 | 24.972898 | 74.843351 | 202 | 25.022383 | 74.839193 |
| 65 | 25.009526 | 74.850401 | 134 | 24.973417 | 74.844142 | 203 | 25.023270 | 74.839305 |
| 66 | 25.009134 | 74.849581 | 135 | 24.974173 | 74.844640 | 204 | 25.024163 | 74.839321 |
| 67 | 25.008760 | 74.848782 | 136 | 24.975060 | 74.844737 | 205 | 25.025027 | 74.839210 |
| 68 | 25.007945 | 74.849051 | 137 | 24.975930 | 74.844534 | 206 | 25.025587 | 74.838947 |
| 69 | 25.007229 | 74.849424 | 138 | 24.976740 | 74.844129 | 207 | 25.026385 | 74.839385 |

Details of Catchment Area/Zone of Influence of Orai Dam Wetland falling within the boundary limit of Chittorgarh, Rajasthan:- Total Area Of = 203.82 Ha
The geo-coordinates of Orai Dam Wetland and its Zone of influence

| Orai Dam | | | | | | | | |
|----------|-----------|-----------|-------|-----------|-----------|-------|-----------|-----------|
| S.No. | Latitude | Longitude | S.No. | Latitude | Longitude | S.No. | Latitude | Longitude |
| 1 | 25.037198 | 74.845526 | 67 | 24.996050 | 74.853135 | 133 | 24.990737 | 74.844414 |
| 2 | 25.037330 | 74.846494 | 68 | 24.995176 | 74.853281 | 134 | 24.990151 | 74.843724 |
| 3 | 25.037514 | 74.847453 | 69 | 24.994298 | 74.853150 | 135 | 24.989992 | 74.842780 |
| 4 | 25.037715 | 74.848407 | 70 | 24.993430 | 74.853143 | 136 | 24.990398 | 74.841930 |
| 5 | 25.037969 | 74.849332 | 71 | 24.992547 | 74.853257 | 137 | 24.991196 | 74.841526 |
| 6 | 25.037929 | 74.850295 | 72 | 24.991681 | 74.853045 | 138 | 24.991764 | 74.840855 |
| 7 | 25.037538 | 74.851167 | 73 | 24.990880 | 74.852615 | 139 | 24.992215 | 74.840026 |
| 8 | 25.036921 | 74.851864 | 74 | 24.990002 | 74.852449 | 140 | 24.992971 | 74.839524 |
| 9 | 25.036064 | 74.852036 | 75 | 24.989110 | 74.852461 | 141 | 24.993853 | 74.839427 |
| 10 | 25.035410 | 74.851418 | 76 | 24.988228 | 74.852373 | 142 | 24.994695 | 74.839730 |
| 11 | 25.034799 | 74.850889 | 77 | 24.987438 | 74.851927 | 143 | 24.995459 | 74.840146 |
| 12 | 25.033916 | 74.850750 | 78 | 24.986693 | 74.851388 | 144 | 24.996351 | 74.840092 |
| 13 | 25.033029 | 74.850642 | 79 | 24.985858 | 74.851047 | 145 | 24.997239 | 74.840003 |
| 14 | 25.032141 | 74.850533 | 80 | 24.984976 | 74.850908 | 146 | 24.998125 | 74.839875 |
| 15 | 25.031254 | 74.850420 | 81 | 24.984094 | 74.850759 | 147 | 24.999006 | 74.839738 |
| 16 | 25.030369 | 74.850292 | 82 | 24.983282 | 74.851064 | 148 | 24.999888 | 74.839614 |
| 17 | 25.029507 | 74.850035 | 83 | 24.982414 | 74.850899 | 149 | 25.000780 | 74.839575 |
| 18 | 25.028626 | 74.849879 | 84 | 24.981863 | 74.850162 | 150 | 25.001672 | 74.839536 |
| 19 | 25.027766 | 74.849625 | 85 | 24.981236 | 74.849509 | 151 | 25.002562 | 74.839455 |
| 20 | 25.026885 | 74.849478 | 86 | 24.980387 | 74.849221 | 152 | 25.003452 | 74.839370 |
| 21 | 25.025997 | 74.849387 | 87 | 24.979513 | 74.849019 | 153 | 25.004341 | 74.839285 |
| 22 | 25.025147 | 74.849095 | 88 | 24.978664 | 74.848719 | 154 | 25.005228 | 74.839174 |
| 23 | 25.024400 | 74.848564 | 89 | 24.977821 | 74.848396 | 155 | 25.006110 | 74.839021 |
| 24 | 25.023815 | 74.847829 | 90 | 24.976969 | 74.848104 | 156 | 25.006993 | 74.838874 |
| 25 | 25.023585 | 74.846932 | 91 | 24.976117 | 74.847819 | 157 | 25.007878 | 74.838748 |

| | | | | | | | | |
|----|-----------|-----------|-----|-----------|-----------|-----|-----------|-----------|
| 26 | 25.022767 | 74.847316 | 92 | 24.975297 | 74.847442 | 158 | 25.008764 | 74.838622 |
| 27 | 25.022930 | 74.847699 | 93 | 24.974447 | 74.847140 | 159 | 25.009650 | 74.838497 |
| 28 | 25.023398 | 74.848497 | 94 | 24.973570 | 74.846979 | 160 | 25.010535 | 74.838371 |
| 29 | 25.023228 | 74.849427 | 95 | 24.972687 | 74.846834 | 161 | 25.011424 | 74.838279 |
| 30 | 25.022507 | 74.849973 | 96 | 24.971809 | 74.846656 | 162 | 25.012314 | 74.838193 |
| 31 | 25.021634 | 74.850138 | 97 | 24.970951 | 74.846391 | 163 | 25.013203 | 74.838107 |
| 32 | 25.020749 | 74.850028 | 98 | 24.970110 | 74.846060 | 164 | 25.014093 | 74.838021 |
| 33 | 25.019950 | 74.850364 | 99 | 24.969294 | 74.845668 | 165 | 25.014982 | 74.837935 |
| 34 | 25.019254 | 74.850977 | 100 | 24.968504 | 74.845239 | 166 | 25.015872 | 74.837858 |
| 35 | 25.018547 | 74.851574 | 101 | 24.968213 | 74.844338 | 167 | 25.016765 | 74.837822 |
| 36 | 25.017711 | 74.851916 | 102 | 24.968362 | 74.843393 | 168 | 25.017657 | 74.837786 |
| 37 | 25.016843 | 74.852139 | 103 | 24.969103 | 74.842919 | 169 | 25.018549 | 74.837751 |
| 38 | 25.015964 | 74.852059 | 104 | 24.969995 | 74.842951 | 170 | 25.019441 | 74.837805 |
| 39 | 25.015119 | 74.851773 | 105 | 24.970887 | 74.842999 | 171 | 25.020328 | 74.837916 |
| 40 | 25.014575 | 74.851041 | 106 | 24.971262 | 74.842576 | 172 | 25.021213 | 74.838040 |
| 41 | 25.013710 | 74.850842 | 107 | 24.971225 | 74.841606 | 173 | 25.022099 | 74.838165 |
| 42 | 25.012817 | 74.850828 | 108 | 24.971610 | 74.840759 | 174 | 25.022985 | 74.838289 |
| 43 | 25.011927 | 74.850890 | 109 | 24.972454 | 74.840533 | 175 | 25.023876 | 74.838336 |
| 44 | 25.011056 | 74.851104 | 110 | 24.973194 | 74.841029 | 176 | 25.024619 | 74.838002 |
| 45 | 25.010208 | 74.851410 | 111 | 24.973406 | 74.841954 | 177 | 25.025466 | 74.837816 |
| 46 | 25.009323 | 74.851378 | 112 | 24.973683 | 74.842883 | 178 | 25.026276 | 74.838226 |
| 47 | 25.008593 | 74.851006 | 113 | 24.974253 | 74.843621 | 179 | 25.027103 | 74.838444 |
| 48 | 25.007741 | 74.851255 | 114 | 24.975129 | 74.843737 | 180 | 25.027992 | 74.838499 |
| 49 | 25.007090 | 74.851894 | 115 | 24.975968 | 74.843433 | 181 | 25.028875 | 74.838645 |
| 50 | 25.006458 | 74.852393 | 116 | 24.976806 | 74.843112 | 182 | 25.029758 | 74.838791 |
| 51 | 25.006565 | 74.853361 | 117 | 24.977693 | 74.843070 | 183 | 25.030641 | 74.838939 |
| 52 | 25.006398 | 74.854322 | 118 | 24.978547 | 74.843338 | 184 | 25.031515 | 74.839137 |
| 53 | 25.006086 | 74.855234 | 119 | 24.979353 | 74.843757 | 185 | 25.032373 | 74.839411 |
| 54 | 25.005332 | 74.855706 | 120 | 24.980107 | 74.844276 | 186 | 25.033248 | 74.839606 |
| 55 | 25.004504 | 74.855425 | 121 | 24.980929 | 74.844453 | 187 | 25.034131 | 74.839734 |
| 56 | 25.003819 | 74.854830 | 122 | 24.981822 | 74.844458 | 188 | 25.035022 | 74.839791 |
| 57 | 25.003115 | 74.854253 | 123 | 24.982668 | 74.844737 | 189 | 25.035913 | 74.839818 |
| 58 | 25.002419 | 74.853657 | 124 | 24.983221 | 74.845458 | 190 | 25.036804 | 74.839747 |
| 59 | 25.001624 | 74.853242 | 125 | 24.984111 | 74.845539 | 191 | 25.037696 | 74.839712 |
| 60 | 25.001240 | 74.852396 | 126 | 24.984995 | 74.845674 | 192 | 25.038544 | 74.839968 |
| 61 | 25.000413 | 74.852124 | 127 | 24.985877 | 74.845831 | 193 | 25.038998 | 74.840783 |
| 62 | 24.999570 | 74.851804 | 128 | 24.986759 | 74.845983 | 194 | 25.038865 | 74.841739 |
| 63 | 24.998732 | 74.851497 | 129 | 24.987646 | 74.846087 | 195 | 25.038360 | 74.842538 |
| 64 | 24.998056 | 74.851673 | 130 | 24.988528 | 74.846015 | 196 | 25.037821 | 74.843319 |
| 65 | 24.997728 | 74.852551 | 131 | 24.989161 | 74.845328 | 197 | 25.037331 | 74.844132 |
| 66 | 24.996922 | 74.852927 | 132 | 24.989932 | 74.844833 | | | |

The detailed Map of Orai Dam Wetland and its Zone of Influence is annexed herewith as Schedule-I ('A').



Schedule-II

Prohibited Activities in Orai Dam Wetland:-

1. Conversion for non wetland uses including encroachments of any kind;
2. Setting up of any new industry and expansion of existing industries;
3. Manufacture or/and handling or/and storage or/and disposal of construction and demolition waste covered under the Construction and Demolition Waste Management Rules, 2016; hazardous substances covered under the Manufacture, Storage and Import of Hazardous Chemical Rules, 1989 or the Rules for Manufacture, Use, Import, Export and Storage of Hazardous Microorganism Genetically Engineered organized or cells, 1989 or the Hazardous Waste (Management, Handling and Transboundary Movement) Rules, 2008; electronic waste covered under the E-Waste (Management) Rules 2016; plastic waste covered under Plastic Waste (Management) Rules, 2016;
4. Solid waste storage and disposal;

5. Discharge of untreated waste and effluents from industries, cities, towns, villages and other human settlements;
6. Any construction of permanent nature except for boat jetties within fifty metres from the mean high flood level observed in the past ten years calculated from the date of commencement of these rules;
7. Commercial mining, stone quarrying and crushing units
8. Commercial water extraction Establishment of large scale commercial livestock and poultry farms;
9. Reducing area/ capacity of the water body;
10. Feeding of fishes and migratory birds by the public;
11. Any type of poaching.

Prohibited Activities in Catchment Area/Zone of Influence:-

1. Discharge of untreated Solid/liquid waste and effluents;
2. Manufacture or/and handling or/and storage or/and disposal of construction and demolition waste covered under the Construction and Demolition Waste Management Rules, 2016; hazardous substances covered under the Manufacture, Storage and Import of Hazardous Chemical Rules, 1989 or the Rules for Manufacture, Use, Import, Export and Storage of Hazardous Microorganism Genetically Engineered organized or cells, 1989 or the Hazardous Waste (Management, Handling and Transboundary Movement) Rules, 2008; electronic waste covered under the E-Waste (Management) Rules 2016; plastic waste covered under Plastic Waste (Management) Rules, 2016;
3. Extraction of commercial water including groundwater.
4. Any type of poaching;

Schedule-III

Regulated Activities in Orai Dam Wetland:-

1. Fisheries;
2. Plying of boats;
3. Desilting;
4. Construction of temporary structures;
5. Water extraction for certain purposes.

Regulated Activities in Catchment Area/Zone of Influence:-

1. Conversion of land for any type of construction;
2. Setting up of any new industries and expansion of existing industries;
3. Mining.

[F.No.6 (3) Env/2023]

By order of the Governor,

Shikhar Agrawal,
Additional Chief Secretary to the Government.