 सत्यमेव जयते	राजस्थान राजपत्र विशेषांक	RAJASTHAN GAZETTE Extraordinary
	साधिकार प्रकाशित	Published by Authority
	फाल्गुन 10, गुरुवार, शाके 1945-फरवरी 29, 2024 <i>Phalguna 10 Thursday, Saka 1945- February 29, 2024</i>	

भाग 4 (ग)

उप-खण्ड(II)

राज्य सरकार तथा अन्य राज्य प्राधिकारियों द्वारा जारी किये गये कानूनी आदेश तथा अधिसूचनाएं।

Department of Environment and Climate Change
Notification

Jaipur, February 19, 2024

S.O.567 .-Whereas the draft notification of the Bhanwar Pipla wetland, situated in village Jandolya, Tehsil Begun, district Chittorgarh Rajasthan was published as required by rule 7 of the Wetland (Conservation and Management) Rules, 2017 read with the Environment (Protection) Act, 1986 (Central Act No. 29 of 1986), vide notification number F.No.6(3)Env/2023 dated 24.08.2023 in the Rajasthan Gazette, Extraordinary, Part 4 (ga), sub-part (I) G.S.R.124 dated 06.09.2023, inviting objections and suggestions from all persons likely to be affected thereby before expiry of the period of sixty days from the date on which the copies of the said notification were made available to the public.

And whereas, copies of the Gazette in which the said notification was published were made available to the public on the 06.09.2023.

And whereas, no objections and suggestions were received on the said Draft Notification.

Now therefore, in exercise of the powers conferred by rule 7 of the Wetland (Conservation and Management) Rules, 2017 read with provisions of the Environment (Protection) Act, 1986 (Central Act No. 29 of 1986), the State Government hereby notifies Bhanwar Pipla wetland, situated in village Jandolya, Tehsil Begun, district Chittorgarh Rajasthan as a wetland and that,-

- (i) the extent of the wetland /wetland complex and its zone of influence shall be as described in Schedule-I of this notification;
- (ii) the activities prohibited within the wetland and its zone of influence shall be as listed in Schedule-II of this notification;
- (iii) the activities regulated within the wetland and its zone of influence, i.e. permitted only with permission of the State Government shall be as listed in Schedule-III of this notification. Request for permission for regulated activities may be made to the District Environment Committee headed by the District Collector; and
- (iv) the State Wetland Authority, Rajasthan shall monitor the enforcement of the provisions of this notification.

Schedule-I

Bhanwar Pipla Wetland comprising of total area of 27.15 Hectare within the following boundary delineation:-

The geo-coordinates of Bhanwar Pipla Wetland of Chittorgarh, Rajasthan

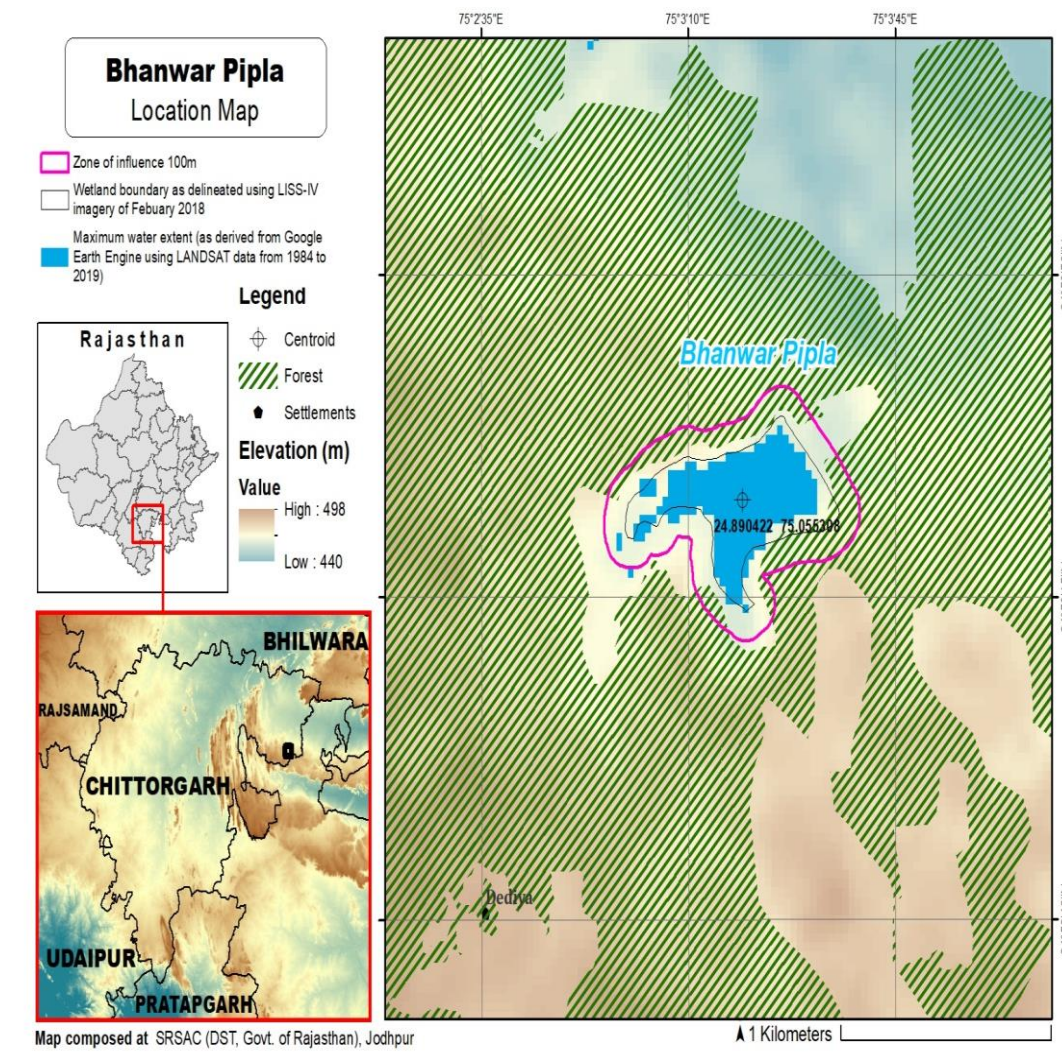
Bhanwar Pipla					
S.No.	Latitude	Longitude	S.No.	Latitude	Longitude
1	24.890716	75.059401	16	24.889671	75.051283
2	24.889962	75.059811	17	24.889669	75.050375
3	24.889499	75.059006	18	24.889492	75.049810
4	24.889438	75.058032	19	24.890360	75.049964
5	24.889256	75.057083	20	24.890867	75.050760
6	24.889065	75.056130	21	24.891377	75.051557
7	24.888576	75.055385	22	24.891695	75.052472
8	24.887725	75.055382	23	24.891636	75.053428
9	24.887156	75.055595	24	24.891789	75.054386
10	24.887434	75.054755	25	24.891970	75.055342
11	24.888038	75.054045	26	24.892331	75.056226
12	24.888897	75.053862	27	24.892918	75.056956
13	24.889766	75.053799	28	24.892468	75.057678
14	24.890196	75.052990	29	24.891822	75.058354
15	24.890204	75.052013			

Details of Catchment Area/Zone of Influence of Bhanwar Pipla Wetland falling within the boundary limit of Chittorgarh, Rajasthan:- Total Area Of = 32.62 Ha

The geo-coordinates of Bhanwar Pipla Wetland and its Zone of influence

Bhanwar Pipla					
S.No.	Latitude	Longitude	S.No.	Latitude	Longitude
1	24.886506	75.054588	18	24.892749	75.054701
2	24.886999	75.053778	19	24.893034	75.055619
3	24.887665	75.053137	20	24.893621	75.056352
4	24.888525	75.052910	21	24.893851	75.057275
5	24.889317	75.052751	22	24.893407	75.058092
6	24.888997	75.051947	23	24.892744	75.058743
7	24.888782	75.051028	24	24.892097	75.059419
8	24.888390	75.050197	25	24.891419	75.060056
9	24.888619	75.049271	26	24.890702	75.060637
10	24.889399	75.048835	27	24.889842	75.060801
11	24.890284	75.048905	28	24.889093	75.060294
12	24.891058	75.049352	29	24.888680	75.059430
13	24.891566	75.050149	30	24.888568	75.058464
14	24.892088	75.050938	31	24.888435	75.057505
15	24.892422	75.051844	32	24.888212	75.056556
16	24.892647	75.052782	33	24.887736	75.056714
17	24.892559	75.053748	34	24.886880	75.056718
			35	24.886319	75.055974

The detailed Map of Bhanwar Pipla Wetland and its Zone of Influence is annexed herewith as Schedule-I ('A').



Schedule-II

Prohibited Activities in Bhanwar Pipla Wetland:-

1. Conversion for non wetland uses including encroachments of any kind;
2. Setting up of any new industry and expansion of existing industries;
3. Manufacture or/and handling or/and storage or/and disposal of construction and demolition waste covered under the Construction and Demolition Waste Management Rules, 2016; hazardous substances covered under the Manufacture, Storage and Import of Hazardous Chemical Rules, 1989 or the Rules for Manufacture, Use, Import, Export and Storage of Hazardous Microorganism Genetically Engineered organized or cells, 1989 or the Hazardous Waste (Management, Handling and Transboundary Movement) Rules, 2008; electronic waste covered under the E-Waste (Management) Rules 2016; plastic waste covered under Plastic Waste (Management) Rules, 2016;
4. Solid waste storage and disposal;

5. Discharge of untreated waste and effluents from industries, cities, towns, villages and other human settlements;
6. Any construction of permanent nature except for boat jetties within fifty metres from the mean high flood level observed in the past ten years calculated from the date of commencement of these rules;
7. Commercial mining, stone quarrying and crushing units
8. Commercial water extraction Establishment of large scale commercial livestock and poultry farms;
9. Reducing area/ capacity of the water body;
10. Feeding of fishes and migratory birds by the public;
11. Any type of poaching.

Prohibited Activities in Catchment Area/Zone of Influence:-

1. Discharge of untreated Solid/liquid waste and effluents;
2. Manufacture or/and handling or/and storage or/and disposal of construction and demolition waste covered under the Construction and Demolition Waste Management Rules, 2016; hazardous substances covered under the Manufacture, Storage and Import of Hazardous Chemical Rules, 1989 or the Rules for Manufacture, Use, Import, Export and Storage of Hazardous Microorganism Genetically Engineered organized or cells, 1989 or the Hazardous Waste (Management, Handling and Transboundary Movement) Rules, 2008; electronic waste covered under the E-Waste (Management) Rules 2016; plastic waste covered under Plastic Waste (Management) Rules, 2016;
3. Extraction of commercial water including groundwater.
4. Any type of poaching;

Schedule—III

Regulated Activities in Bhanwar Pipla Wetland:-

1. Fisheries;
2. Plying of boats;
3. Desilting;
4. Construction of temporary structures;
5. Water extraction for certain purposes.

Regulated Activities in Catchment Area/Zone of Influence:-

1. Conversion of land for any type of construction;
2. Setting up of any new industries and expansion of existing industries;
3. Mining.

[F.No.6 (3) Env/2023]

By order of the Governor,

Shikhar Agrawal,
Additional Chief Secretary to the Government.