 सत्यमेव जयते	राजस्थान राजपत्र विशेषांक	RAJASTHAN GAZETTE Extraordinary
	साधिकार प्रकाशित	Published by Authority
	चैत्र 29, बुधवार, शाके 1945-अप्रैल 19, 2023 <i>Chaitra 29, Wednesday, Saka 1945- April 19, 2023</i>	

भाग 4 (ग)

उप-खण्ड(II)

राज्य सरकार तथा अन्य राज्य प्राधिकारियों द्वारा जारी किये गये कानूनी आदेश तथा अधिसूचनाएं।

Department of Environment and Climate Change

Notification

Jaipur, March 21, 2023

S.O.10 .-The following draft of the notification, which the State Government proposes to issue in exercise of the powers conferred by rule 7 of the Wetland (Conservation and Management) Rules, 2017 read with Environment (Protection) Act, 1986 (Central Act No. 29 of 1986), is hereby published for the information of the persons likely to be concerned or affected thereby and notice is hereby given to them that the said draft notification shall be taken into consideration after the expiry of a period of sixty days from the date on which copies of this notification as published in the Official Gazette are made available to the public.

Any person interested in making any objection or suggestion on the proposals contained in the draft notification may forward the same in writing for consideration to the State Government within the period of 60 days as specified above to the Director cum Joint Secretary, Department of Environment and Climate Change Room No. 8240 SSO Building, Government Secretariat, Jaipur, Rajasthan or at env_raj@yahoo.co.in.

Draft Notification

WHEREAS, the Brahm Talab and Dhand Talab, Menar wetland complex , situated in Menar village of Vallabh Nagar Tehsil in Udaipur district of Rajasthan, is considered to be critically significant for its ecosystem services and biodiversity values for the local communities and society at large;

AND WHEREAS, it is considered that for sustaining the said values, the ecological character of wetland ecosystem needs to be maintained by regulating developmental activities within the wetland as well as within its zone of influence;

NOW THEREFORE, the State Government declares that the Brahm Talab and Dhand Talab, Menar wetland complex wetland shall be covered under the provisions of the Wetlands (Conservation and Management) Rules, 2017 and notifies that,-

- (i) the extent of the wetland /wetland complex and its zone of influence shall be as described in Schedule-I of this notification;
- (ii) the activities prohibited within the wetland and its zone of influence shall be as listed in Schedule-II of this notification;
- (iii) the activities regulated within the wetland and its zone of influence, i.e. permitted only with permission of the State Government shall be as listed in Schedule-III of this

notification. Request for permission for regulated activities may be made to the District Environment Committee headed by the District Collector; and

- (iv) the State Wetland Authority, Rajasthan shall monitor the enforcement of the provisions of this notification.

Schedule-I

Dhand-Braham Wetland Complex comprising of total area of 132 Hectare within the following boundary delineation:-

North : NH – 76 (Udaipur-Chittorgarh) Catchment area

East : Village Menar and Amarpura Menar Road

West : Catchment area and Agriculture Fields of village Menar

South : Agriculture Fields of villager Menar

The geo-coordinates of Dhand-Braham Wetland Complex of Udaipur, Rajasthan

Geo-coordinates of Dhand-Braham Wetland Complex, Udaipur, Rajasthan					
S.No.	Latitude	Longitude	S.No.	Latitude	Longitude
Dhand Talab			Braham Talab		
1	24°35'41.90"N	74° 6'50.55"E	1	24°35'58.58"N	74° 6'31.17"E
2	24°35'34.54"N	74° 6'51.14"E	2	24°35'58.90"N	74° 6'25.09"E
3	24°35'28.30"N	74° 6'49.16"E	3	24°36'1.14"N	74° 6'17.43"E
4	24°35'23.95"N	74° 6'46.93"E	4	24°36'1.36"N	74° 6'12.34"E
5	24°35'19.89"N	74° 6'42.41"E	5	24°36'1.63"N	74° 6'7.99"E
6	24°35'11.72"N	74° 6'34.36"E	6	24°36'7.30"N	74° 6'10.53"E
7	24°35'17.91"N	74° 6'25.66"E	7	24°36'13.17"N	74° 6'11.04"E
8	24°35'22.15"N	74° 6'16.50"E	8	24°36'20.18"N	74° 6'12.15"E
9	24°35'25.57"N	74° 6'7.76"E	9	24°36'26.64"N	74° 6'11.90"E
10	24°35'31.60"N	74° 6'10.75"E	10	24°36'33.95"N	74° 6'16.00"E
11	24°35'34.09"N	74° 6'14.82"E	11	24°36'31.57"N	74° 6'20.65"E
12	24°35'38.09"N	74° 6'17.35"E	12	24°36'27.46"N	74° 6'22.31"E
13	24°35'42.60"N	74° 6'19.90"E	13	24°36'27.64"N	74° 6'25.78"E
14	24°35'45.56"N	74° 6'20.23"E	14	24°36'21.43"N	74° 6'28.04"E
15	24°35'46.67"N	74° 6'23.11"E	15	24°36'13.58"N	74° 6'28.72"E
16	24°35'46.54"N	74° 6'25.98"E	16	24°36'12.60"N	74° 6'37.58"E
17	24°35'45.12"N	74° 6'28.95"E	17	24°36'11.75"N	74° 6'38.40"E
18	24°35'43.74"N	74° 6'33.07"E	18	24°36'7.20"N	74° 6'35.77"E
19	24°35'42.31"N	74° 6'39.78"E	19	24°36'4.43"N	74° 6'35.62"E
20	24°35'44.18"N	74° 6'40.88"E	20	24°36'4.14"N	74° 6'33.39"E
21	24°35'43.09"N	74° 6'47.86"E	21	24°35'59.57"N	74° 6'31.16"E
AREA = 80.00 Ha.			AREA = 52.00 Ha.		
TOTAL AREA = 132.00 Ha.					

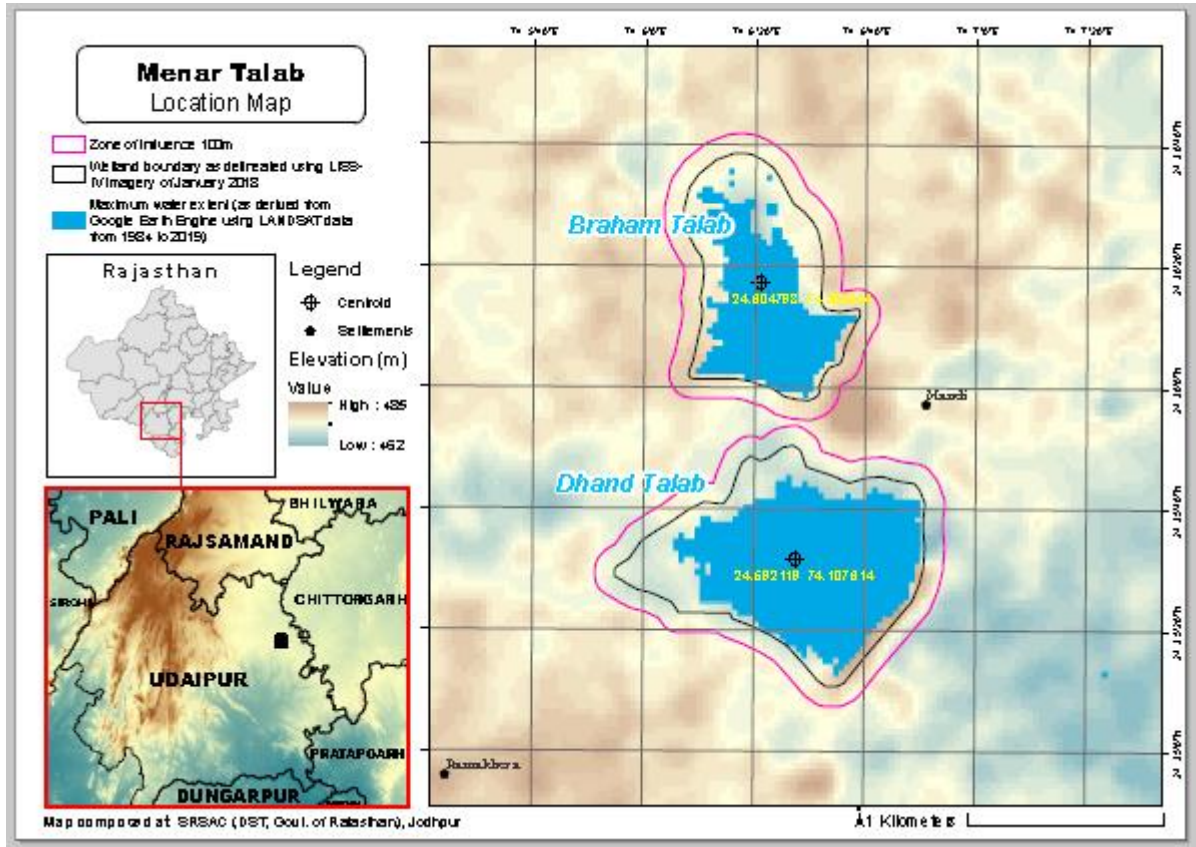
Details of Catchment Area/Zone of Influence of Dhand-Braham Wetland Complex falling within the boundary limit of Udaipur, Rajasthan:-

S. No.	Type of Catchment Area	Area in Hectare
1	Under Agricultural Use	29.40

The geo-coordinates of Dhand-Braham Wetland Complex and its Zone of influence of Udaipur, Rajasthan

Geo-coordinates of Dhand-Braham Wetland Complex and its Zone of Influence of Udaipur, Rajasthan					
S.No.	Latitude	Longitude	S.No.	Latitude	Longitude
Dhand Talab			Braham Talab		
1	24°35'42.5"N	74°06'51.5"E	1	24°35'58.40"N	74° 6'31.33"E
2	24°35'33.40"N	74° 6'51.46"E	2	24°35'58.78"N	74° 6'24.10"E
3	24°35'29.60"N	74° 6'50.20"E	3	24°36'00.9"N	74°06'17.4"E
4	24°35'23.46"N	74° 6'47.55"E	4	24°36'1.20"N	74° 6'10.10"E
5	24°35'18.60"N	74° 6'42.31"E	5	24°36'1.33"N	74° 6'7.46"E
6	24°35'13.8"N	74°06'37.9"E	6	24°36'7.32"N	74° 6'10.28"E
7	24°35'09.0"N	74°06'33.4"E	7	24°36'13.28"N	74° 6'10.71"E
8	24°35'12.76"N	74° 6'26.10"E	8	24°36'20.2"N	74°06'11.9"E
9	24°35'14.64"N	74° 6'26.77"E	9	24°36'26.71"N	74° 6'11.56"E
10	24°35'19.88"N	74° 6'16.07"E	10	24°36'32.36"N	74° 6'14.94"E
11	24°35'21.92"N	74° 6'11.28"E	11	24°36'35.32"N	74° 6'15.42"E
12	24°35'24.64"N	74° 6'5.05"E	12	24°36'31.5"N	74°06'20.8"E
13	24°35'26.38"N	74° 6'0.34"E	13	24°36'27.64"N	74° 6'22.41"E
14	24°35'31.5"N	74°06'00.1"E	14	24°36'27.88"N	74° 6'25.90"E
15	24°35'37.6"N	74°06'01.6"E	15	24°36'21.43"N	74° 6'28.23"E
16	24°35'39.01"N	74° 6'8.65"E	16	24°36'13.75"N	74° 6'28.87"E
17	24°35'40.65"N	74° 6'15.08"E	17	24°36'12.8"N	74°06'37.8"E
18	24°35'46.2"N	74°06'19.6"E	18	24°36'11.82"N	74°06'38.55"E
19	24°35'49.4"N	74°06'22.7"E	19	24°36'07.3"N	74°06'36.0"E
20	24°35'48.5"N	74°06'26.3"E	20	24°36'04.2"N	74°06'36.0"E
21	24°35'46.61"N	74°06'26.3"E	21	24°36'04.0"N	74°06'33.47"E
22	24°35'44.22"N	74° 6'33.10"E			
23	24°35'42.83"N	74° 6'39.67"E			
24	24°35'44.6"N	74°06'40.7"E			
25	24°35'44.13"N	74° 6'45.20"E			
AREA = 107.00 Ha.			AREA = 54.40 Ha.		
TOTAL AREA = 161.40 Ha.					

The detailed Map of **Dhand-Braham Wetland Complex** and its Zone of Influence is annexed herewith as Schedule-I ('A').



Schedule-II

Prohibited Activities in Dhand-Braham Wetland Complex :-

1. Conversion for non wetland uses including encroachments of any kind;
2. Setting up of any new industry and expansion of existing industries;
3. Manufacture or/and handling or/and storage or/and disposal of construction and demolition waste covered under the Construction and Demolition Waste Management Rules, 2016; hazardous substances covered under the Manufacture, Storage and Import of Hazardous Chemical Rules, 1989 or the Rules for Manufacture, Use, Import, Export and Storage of Hazardous Microorganism Genetically Engineered organized or cells, 1989 or the Hazardous Waste (Management, Handling and Transboundary Movement) Rules, 2008; electronic waste covered under the E-Waste (Management) Rules 2016; plastic waste covered under Plastic Waste (Management) Rules, 2016;
4. Solid waste storage and disposal;
5. Discharge of untreated waste and effluents from industries, cities, towns, villages and other human settlements;
6. Any construction of permanent nature except for boat jetties within fifty metres from the mean high flood level observed in the past ten years calculated from the date of commencement of these rules;
7. Commercial mining, stone quarrying and crushing units
8. Commercial water extraction Establishment of large scale commercial livestock and poultry farms;
9. Reducing area/ capacity of the water body;
10. Feeding of fishes and migratory birds by the public;
11. Any type of poaching.

Prohibited Activities in Catchment Area/Zone of Influence :-

1. Discharge of untreated Solid/liquid waste and effluents;
2. Manufacture or/and handling or/and storage or/and disposal of construction and demolition waste covered under the Construction and Demolition Waste Management Rules, 2016; hazardous substances covered under the Manufacture, Storage and Import of Hazardous Chemical Rules, 1989 or the Rules for Manufacture, Use, Import, Export and Storage of Hazardous Microorganism Genetically Engineered organized or cells, 1989 or the Hazardous Waste (Management, Handling and Transboundary Movement) Rules, 2008; electronic waste covered under the E-Waste (Management) Rules 2016; plastic waste covered under Plastic Waste (Management) Rules, 2016;
3. Extraction of commercial water including groundwater.
4. Any type of poaching;

Schedule-III**Regulated Activities in Dhand-Braham Wetland Complex :-**

1. Fisheries;
2. Plying of boats;
3. Desilting;
4. Construction of temporary structures;
5. Water extraction for certain purposes.

Regulated Activities in Catchment Area/Zone of Influence :-

1. Conversion of land for any type of construction;
2. Setting up of any new industries and expansion of existing industries;
3. Mining.

[F.No.6 (3) Env/2023]

By order of the Governor,

Shikhar Agrawal,

Additional Chief Secretary to the Government.

Government Central Press, Jaipur.