 सत्यमेव जयते	<b>राजस्थान राजपत्र</b> <b>विशेषांक</b>	<b>RAJASTHAN GAZETTE</b> <b>Extraordinary</b>
	<b>साधिकार प्रकाशित</b>	<b>Published by Authority</b>
	वैशाख 04, सोमवार, शाके 1945-अप्रैल 24, 2023 <i>Vaisakha 04, Monday, Saka 1945- April 24, 2023</i>	

भाग 4 (ग)

उप-खण्ड(II)

राज्य सरकार तथा अन्य राज्य प्राधिकारियों द्वारा जारी किये गये कानूनी आदेश तथा अधिसूचनाएं।

**Department of Environment and Climate Change**

Notification

**Jaipur, March 21, 2023**

**S.O.28** .- The following draft of the notification, which the State Government proposes to issue in exercise of the powers conferred by rule 7 of the Wetland (Conservation and Management) Rules, 2017 read with Environment (Protection) Act, 1986 (Central Act No. 29 of 1986), is hereby published for the information of the persons likely to be concerned or affected thereby and notice is hereby given to them that the said draft notification shall be taken into consideration after the expiry of a period of sixty days from the date on which copies of this notification as published in the Official Gazette are made available to the public.

Any person interested in making any objection or suggestion on the proposals contained in the draft notification may forward the same in writing for consideration to the State Government within the period of 60 days as specified above to the Director cum Joint Secretary, Department of Environment and Climate Change Room No. 8240 SSO Building, Government Secretariat, Jaipur, Rajasthan or at env\_raj@yahoo.co.in.

**Draft Notification**

WHEREAS, the Surpura Wetland, situated in Surpura Village, Jodhpur Tehsil in Jodhpur district of Rajasthan, is considered to be critically significant for its ecosystem services and biodiversity values for the local communities and society at large;

AND WHEREAS, it is considered that for sustaining the said values, the ecological character of wetland ecosystem needs to be maintained by regulating developmental activities within the wetland as well as within its zone of influence;

NOW THEREFORE, the State Government declares that the Surpura wetland shall be covered under the provisions of the Wetlands (Conservation and Management) Rules, 2017 and notifies that,-

- (i) the extent of the wetland /wetland complex and its zone of influence shall be as described in Schedule-I of this notification;
- (ii) the activities prohibited within the wetland and its zone of influence shall be as listed in Schedule-II of this notification;
- (iii) the activities regulated within the wetland and its zone of influence, i.e. permitted only with permission of the State Government shall be as listed in Schedule-III of this notification. Request for permission for regulated activities may be made to the District Environment Committee headed by the District Collector; and

- (iv) the State Wetland Authority, Rajasthan shall monitor the enforcement of the provisions of this notification.

### Schedule-I

Surpura Wetland Complex comprising of total area of 130.09 Hectare within the following boundary delineation:-

The geo-coordinates of Surpura Wetland of Jodhpur, Rajasthan

#### Surpura

S.no	Latitude	Longitude	S.no	Latitude	Longitude
1	26.36554234950	73.07473532990	27	26.36135940100	73.08293606870
2	26.36638600410	73.07503015730	28	26.36045793890	73.08297151730
3	26.36727636460	73.07491595650	29	26.36010737210	73.08224515020
4	26.36814960850	73.07499339000	30	26.35986294540	73.08134664150
5	26.36852143270	73.07587781440	31	26.35935467250	73.08069250960
6	26.36865962340	73.07686200320	32	26.35867307540	73.08014991580
7	26.36924088400	73.07738148910	33	26.35786261040	73.07973988760
8	26.37012009260	73.07727442690	34	26.35699050890	73.07948193740
9	26.37100805760	73.07714713200	35	26.35611840700	73.07922399070
10	26.37183809080	73.07676543510	36	26.35530844130	73.07880183830
11	26.37255220010	73.07719620000	37	26.35453196410	73.07829118740
12	26.37303366580	73.07804090400	38	26.35431518710	73.07743954420
13	26.37332228890	73.07898538900	39	26.35465845220	73.07652121740
14	26.37264842680	73.07951536070	40	26.35519918870	73.07571912810
15	26.37178639470	73.07978014430	41	26.35579725350	73.07497007660
16	26.37092094960	73.08001478270	42	26.35649401060	73.07434681840
17	26.37003852600	73.08022509460	43	26.35704465850	73.07356270980
18	26.36916888300	73.08049293060	44	26.35742536060	73.07266728030
19	26.36829957140	73.08076225720	45	26.35821784920	73.07223926730
20	26.36743025920	73.08103158000	46	26.35911339650	73.07214917960
21	26.36656332020	73.08130996590	47	26.36001430990	73.07217694360
22	26.36569940110	73.08159988470	48	26.36091462460	73.07224569310
23	26.36483502780	73.08188808630	49	26.36181373940	73.07233071760
24	26.36396720000	73.08216324100	50	26.36270122210	73.07246207730
25	26.36310784880	73.08246930790	51	26.36345824820	73.07300581550
26	26.36224672890	73.08276797530	52	26.36411969370	73.07368636050

**Details of Catchment Area/Zone of Influence of Surpura Wetland falling within the boundary limit of Jodhpur, Rajasthan:-**

**Total Area Of = 55.73**

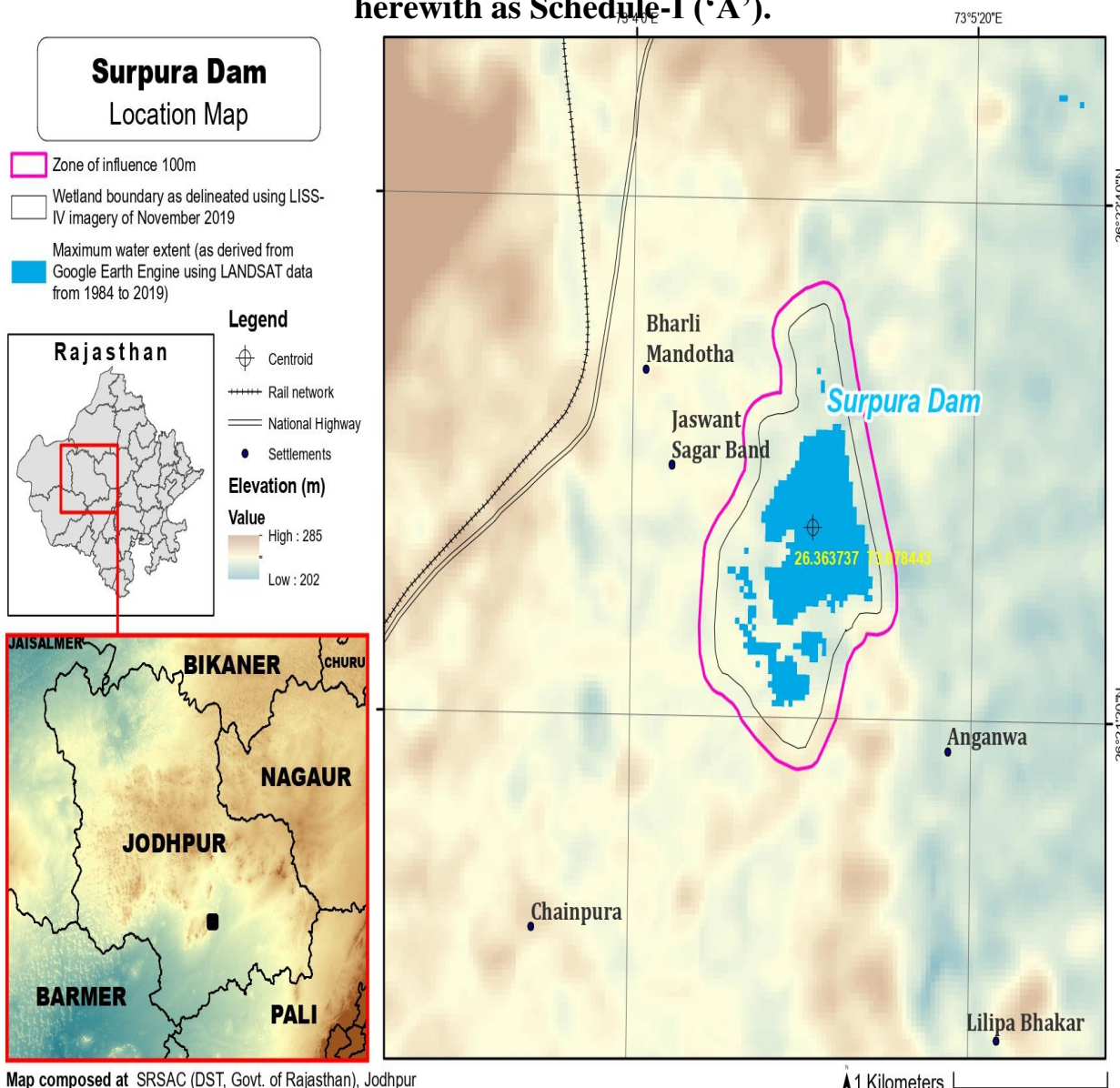
**The geo-coordinates of Surpura Wetland and its Zone of influence**

#### Surpura Dam

S.no	Latitude	Longitude	S.no	Latitude	Longitude
1	26.36936308710	73.08147297440	30	26.35722962120	73.07154629880
2	26.36849377330	73.08174229430	31	26.35808655950	73.07123811060
3	26.36762445880	73.08201161060	32	26.35898395220	73.07115352700
4	26.36675787580	73.08229135790	33	26.35988507830	73.07116412270

5	26.36589395440	73.08258127000	34	26.36078583240	73.07122690360
6	26.36502930710	73.08286844080	35	26.36168451270	73.07131788100
7	26.36416159700	73.08314402630	36	26.36258259390	73.07140247870
8	26.36330284040	73.08345226410	37	26.36341163080	73.07176488830
9	26.36244055240	73.08374647850	38	26.36415082020	73.07233741940
10	26.36155434730	73.08392543960	39	26.36480951640	73.07302194680
11	26.36065323960	73.08397303560	40	26.36556545700	73.07356105850
12	26.35978103690	73.08378400220	41	26.36635288100	73.07401596150
13	26.35923865760	73.08302620710	42	26.36724398630	73.07391185390
14	26.35919831080	73.08204269340	43	26.36813896390	73.07392815300
15	26.35858701640	73.08135032750	44	26.36890289170	73.07441112120
16	26.35786398080	73.08077707710	45	26.36932909770	73.07528101280
17	26.35699188070	73.08051911910	46	26.36946334550	73.07626807310
18	26.35611978020	73.08026116450	47	26.37035859620	73.07626167430
19	26.35526958800	73.07994072950	48	26.37120717660	73.07596118930
20	26.35449311470	73.07943007040	49	26.37207337770	73.07571559810
21	26.35372560740	73.07890480630	50	26.37289978540	73.07608119990
22	26.35339058790	73.07800480160	51	26.37346120840	73.07686460050
23	26.35348849120	73.07702776540	52	26.37391175150	73.07773223480
24	26.35381738080	73.07609823730	53	26.37418362160	73.07868607460
25	26.35435745160	73.07529562300	54	26.37407584610	73.07965367560
26	26.35493576510	73.07452813930	55	26.37340551000	73.08029415170
27	26.35558484030	73.07383875720	56	26.37256125560	73.08063824250
28	26.35621719200	73.07314686160	57	26.37167863480	73.08084458570
29	26.35659843570	73.07224782870	58	26.37079910780	73.08106858930

The detailed Map of Surpura Wetland and its Zone of Influence is annexed herewith as Schedule-I ('A').



### Schedule-II

Prohibited Activities in Surpura Lake Wetland :-

1. Conversion for non wetland uses including encroachments of any kind;
2. Setting up of any new industry and expansion of existing industries;
3. Manufacture or/and handling or/and storage or/and disposal of construction and demolition waste covered under the Construction and Demolition Waste Management Rules, 2016; hazardous substances covered under the Manufacture, Storage and Import of Hazardous Chemical Rules, 1989 or the Rules for Manufacture, Use, Import, Export and Storage of Hazardous Microorganism Genetically Engineered organized or cells, 1989 or the Hazardous Waste (Management, Handling and Transboundary Movement)

Rules, 2008;electronic waste covered under the E-Waste (Management) Rules 2016;  
plastic waste covered under Plastic Waste (Management) Rules, 2016;

4. Solid waste storage and disposal;
5. Discharge of untreated waste and effluents from industries, cities, towns, villages and other human settlements;
6. Any construction of permanent nature except for boat jetties within fifty metres from the mean high flood level observed in the past ten years calculated from the date of commencement of these rules;
7. Commercial mining, stone quarrying and crushing units
8. Commercial water extraction Establishment of large scale commercial livestock and poultry farms;
9. Reducing area/ capacity of the water body;
10. Feeding of fishes and migratory birds by the public;
11. Any type of poaching.

Prohibited Activities in Catchment Area/Zone of Influence :-

1. Discharge of untreated Solid/liquid waste and effluents;
2. Manufacture or/and handling or/and storage or/and disposal of construction and demolition waste covered under the Construction and Demolition Waste Management Rules, 2016; hazardous substances covered under the Manufacture, Storage and Import of Hazardous Chemical Rules, 1989 or the Rules for Manufacture, Use, Import, Export and Storage of Hazardous Microorganism Genetically Engineered organized or cells, 1989 or the Hazardous Waste (Management, Handling and Transboundary Movement) Rules, 2008;electronic waste covered under the E-Waste (Management) Rules 2016; plastic waste covered under Plastic Waste (Management) Rules, 2016;
3. Extraction of commercial water including groundwater.
4. Any type of poaching;

### **Schedule–III**

Regulated Activities in Surpura Lake Wetland :-

1. Fisheries;
2. Plying of boats;
3. Desilting;
4. Construction of temporary structures;
5. Water extraction for certain purposes.

Regulated Activities in Catchment Area/Zone of Influence :-

1. Conversion of land for any type of construction;
2. Setting up of any new industries and expansion of existing industries;
3. Mining.

**[F.No.6 (3) Env/2023]**  
**By order of the Governor,**

Shikhar Agrawal,  
**Additional Chief Secretary to the Government.**

\_\_\_\_\_

**Government Central Press, Jaipur.**