



सत्यमेव जयते

राजस्थान राजपत्र  
विशेषांक

साधिकार प्रकाशित

RAJASTHAN GAZETTE  
Extraordinary

Published by Authority

भाद्र 09, गुरुवार, शाके 1945-अगस्त 31, 2023  
Bhadra 09, Thursday, Saka 1945- August 31, 2023

भाग 4 (ग)

उप-खण्ड (I)

राज्य सरकार तथा अन्य राज्य-प्राधिकारियों द्वारा जारी किये गये (सामान्य आदेशों, उप-विधियों आदि को सम्मिलित करते हुए) सामान्य कानूनी नियम।

**Department of Environment and Climate Change**  
Notification

**Jaipur, July 19, 2023**

**G.S.R.95** .-Whereas the draft notification of the Sehrol wetland, situated in Village Sehrol Talhati, Tehsil Shahabad, district Baran Rajasthan was published as required by rule 7 of the Wetland (Conservation and Management) Rules, 2017 read with the Environment (Protection) Act, 1986 (Central Act No. 29 of 1986), vide notification of the Department of Environment and Climate Change, number G.S.R. 50 dated 24.04.2023 in the Rajasthan Gazette, Extraordinary, Part 4 (ga), sub-part (II), inviting objections and suggestions from all persons likely to be affected thereby before expiry of the period of sixty days from the date on which the copies of the said notification were made available to the public.

And whereas, copies of the Gazette in which the said notification was published were made available to the public on the 24.04.2023.

And whereas, no objections and suggestions were received on the said Draft Notification.

Now therefore, in exercise of the powers conferred by rule 7 of the Wetland (Conservation and Management) Rules, 2017 read with provisions of the Environment (Protection) Act, 1986 (Central Act No. 29 of 1986), the State Government hereby notifies Sehrol wetland, situated in Village Sehrol Talhati, Tehsil Shahabad, district Baran Rajasthan as a wetland and that,-

- (i) the extent of the wetland/wetland complex and its zone of influence shall be as described in Schedule-I of this notification;
- (ii) the activities prohibited within the wetland and its zone of influence shall be as listed in Schedule-II of this notification;
- (iii) the activities regulated within the wetland and its zone of influence, i.e. permitted only with permission of the State Government shall be as listed in Schedule-III of this notification. Request for permission for regulated activities may be made to the District Environment Committee headed by the District Collector; and
- (iv) the State Wetland Authority, Rajasthan shall monitor the enforcement of the provisions of this notification.

**Schedule-I**

**Sehrol Talab Wetland comprising of total area of 68.00 Hectare within the following boundary delineation:-**

**The geo-coordinates of Sehrol Talab Wetland of Baran, Rajasthan**

<b>Sehrol Talab</b>					
<b>S.no</b>	<b>Latitude</b>	<b>Longitude</b>	<b>S.no</b>	<b>Latitude</b>	<b>Longitude</b>
1	25.28945273	77.19143038	35	25.28717261	77.18620555
2	25.28910856	77.19226645	36	25.28636202	77.18578164
3	25.2883316	77.19276212	37	25.28572527	77.18507815
4	25.2875084	77.19313958	38	25.28535946	77.18422186
5	25.28712931	77.19240347	39	25.28536616	77.18326981
6	25.2865636	77.19197387	40	25.28606424	77.18341241
7	25.28598807	77.19170062	41	25.28649488	77.18427715
8	25.28582504	77.19083665	42	25.28722578	77.1847847
9	25.28496675	77.19056269	43	25.28757354	77.18405145
10	25.28406796	77.19050031	44	25.28767076	77.18306459
11	25.28331459	77.19006297	45	25.28781863	77.18210724
12	25.28251997	77.18983006	46	25.28847139	77.18207739
13	25.28242777	77.18885132	47	25.28860942	77.18304687
14	25.28187138	77.18810244	48	25.28865705	77.18401067
15	25.28233446	77.18772584	49	25.28914861	77.18448662
16	25.28294696	77.18837069	50	25.28972215	77.18376531
17	25.28377596	77.18873882	51	25.28942035	77.18284662
18	25.28455511	77.18845784	52	25.29000082	77.18253109
19	25.28387687	77.18818989	53	25.29063289	77.18211596
20	25.28304223	77.18818763	54	25.2911689	77.18138288
21	25.2824102	77.18748663	55	25.29188079	77.18171672
22	25.28157198	77.18718566	56	25.29145967	77.18244297
23	25.28139187	77.1862545	57	25.29178387	77.18330786
24	25.28089227	77.18554458	58	25.29107912	77.18388662
25	25.28150522	77.18506439	59	25.29164238	77.1844987
26	25.28231323	77.18548195	60	25.29163191	77.18533986
27	25.28293287	77.18618901	61	25.29085456	77.18578959
28	25.28323946	77.18710344	62	25.29071707	77.18640219
29	25.28379378	77.18691622	63	25.29082427	77.18736845
30	25.28392335	77.18624373	64	25.2915094	77.18791699
31	25.28479093	77.18651068	65	25.29202532	77.18867459
32	25.28558784	77.18697601	66	25.29148595	77.18932445
33	25.28643039	77.18733047	67	25.29078634	77.18990821
34	25.28719702	77.18709872	68	25.29011321	77.19055405

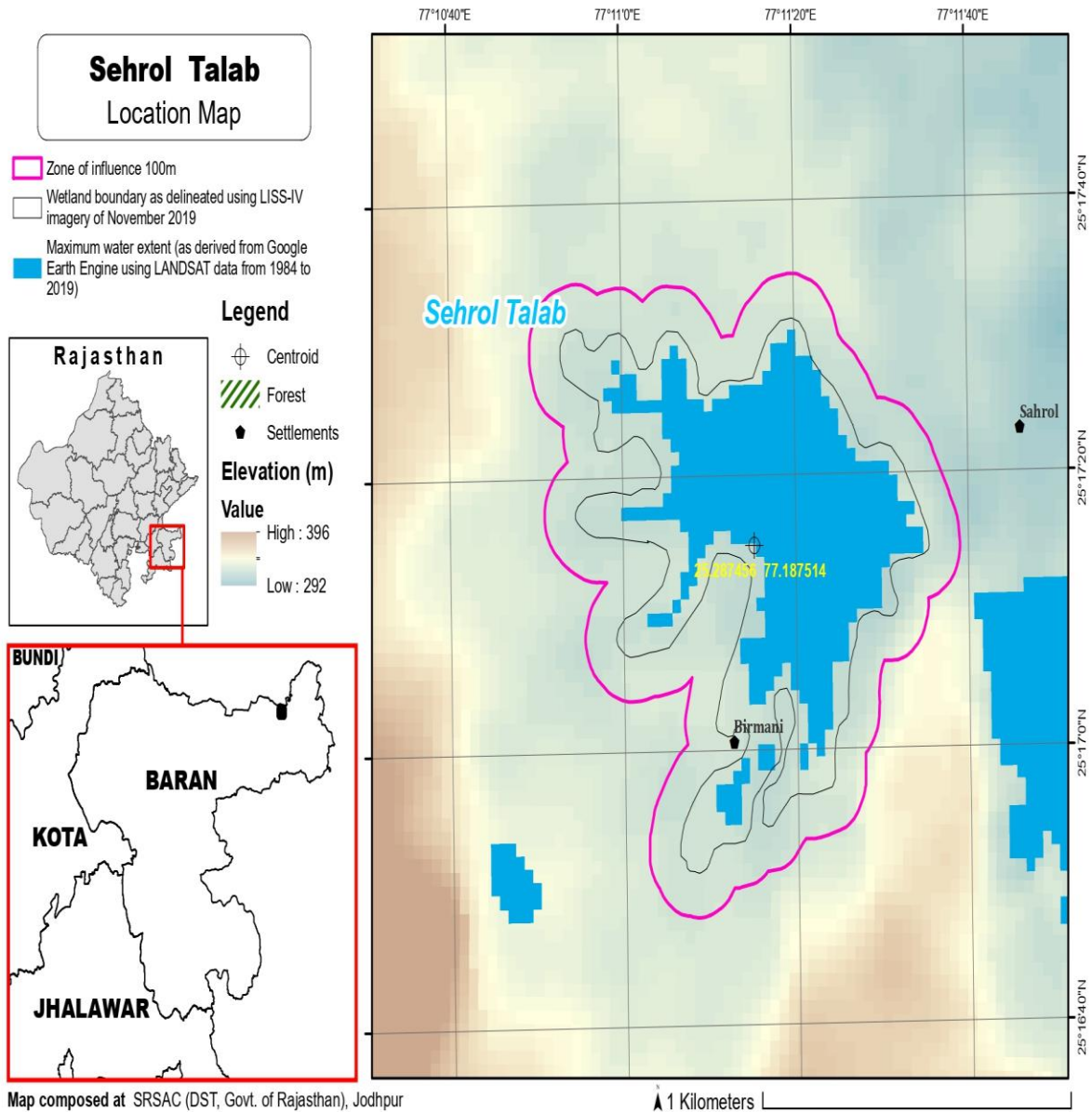
Details of Catchment Area/Zone of Influence of Sehrol Talab Wetland falling within the boundary limit of Baran, Rajasthan:-

Total Area Of = **60.00**

The geo-coordinates of Sehrol Talab Wetland and its Zone of influence **Sehrol Talab**

<b>Sehrol Talab</b>					
S.no	Latitude	Longitude	S.no	Latitude	Longitude
1	25.28022488	77.18469765	27	25.29214055	77.1861853
2	25.28093888	77.18411092	28	25.29172301	77.18691309
3	25.2818293	77.18413215	29	25.29244933	77.18748552
4	25.28264576	77.18453573	30	25.29288959	77.18833226
5	25.28334814	77.18515146	31	25.29283779	77.18930354
6	25.28416031	77.18528584	32	25.29226802	77.19004519
7	25.28467907	77.18529036	33	25.29149962	77.19051716
8	25.28446103	77.18433614	34	25.29085992	77.19120874
9	25.2843705	77.18335439	35	25.29035	77.1919136
10	25.2847838	77.18248958	36	25.28993405	77.19277094
11	25.28557421	77.18206773	37	25.28921601	77.19335689
12	25.28641391	77.1823772	38	25.28841916	77.19382051
13	25.28679299	77.18235623	39	25.28757317	77.19413077
14	25.28713228	77.1814471	40	25.2867247	77.1938868
15	25.28782027	77.1808335	41	25.28624289	77.19311669
16	25.28869045	77.18095537	42	25.28542045	77.19276501
17	25.28935565	77.18149166	43	25.28507615	77.19188023
18	25.29008841	77.18112904	44	25.28439919	77.19150207
19	25.29073946	77.1804853	45	25.28352714	77.1913226
20	25.2916265	77.18035791	46	25.28271527	77.19104034
21	25.29243417	77.18076654	47	25.28190814	77.19064847
22	25.29279945	77.18165542	48	25.28157046	77.18974412
23	25.29262518	77.18259923	49	25.28129324	77.18886489
24	25.29267048	77.18357551	50	25.2808862	77.18801804
25	25.29267795	77.18442465	51	25.2805804	77.18711229
26	25.29267941	77.18540497	52	25.28013969	77.18631111

**The detailed Map of Sehrol Talab Wetland and its Zone of Influence is annexed herewith as Schedule-I ('A').**



**Schedule-II****Prohibited Activities in Sehrol Wetland :-**

1. Conversion for non wetland uses including encroachments of any kind;
2. Setting up of any new industry and expansion of existing industries;
3. Manufacture or/and handling or/and storage or/and disposal of construction and demolition waste covered under the Construction and Demolition Waste Management Rules, 2016; hazardous substances covered under the Manufacture, Storage and Import of Hazardous Chemical Rules, 1989 or the Rules for Manufacture, Use, Import, Export and Storage of Hazardous Microorganism Genetically Engineered organized or cells, 1989 or the Hazardous Waste (Management, Handling and Transboundary Movement) Rules, 2008; electronic waste covered under the E-Waste (Management) Rules 2016; plastic waste covered under Plastic Waste (Management) Rules, 2016;
4. Solid waste storage and disposal;
5. Discharge of untreated waste and effluents from industries, cities, towns, villages and other human settlements;
6. Any construction of permanent nature except for boat jetties within fifty metres from the mean high flood level observed in the past ten years calculated from the date of commencement of these rules;
7. Commercial mining, stone quarrying and crushing units
8. Commercial water extraction Establishment of large scale commercial livestock and poultry farms;
9. Reducing area/ capacity of the water body;
10. Feeding of fishes and migratory birds by the public;
11. Any type of poaching.

**Prohibited Activities in Catchment Area/Zone of Influence :-**

1. Discharge of untreated Solid/liquid waste and effluents;
2. Manufacture or/and handling or/and storage or/and disposal of construction and demolition waste covered under the Construction and Demolition Waste Management Rules, 2016; hazardous substances covered under the Manufacture, Storage and Import of Hazardous Chemical Rules, 1989 or the Rules for Manufacture, Use, Import, Export and Storage of Hazardous Microorganism Genetically Engineered organized or cells, 1989 or the Hazardous Waste (Management, Handling and Transboundary Movement) Rules, 2008; electronic waste covered under the E-Waste (Management) Rules 2016; plastic waste covered under Plastic Waste (Management) Rules, 2016;
3. Extraction of commercial water including groundwater.
4. Any type of poaching;

**Schedule-III****Regulated Activities in Sehrol Wetland :-**

1. Fisheries;
2. Plying of boats;
3. Desilting;
4. Construction of temporary structures;
5. Water extraction for certain purposes.

**Regulated Activities in Catchment Area/Zone of Influence :-**

1. Conversion of land for any type of construction;
2. Setting up of any new industries and expansion of existing industries;
3. Mining.

[F.No.6 (3) Env/2023]

By order of the Governor,

Shikhar Agrawal,

**Additional Chief Secretary to the Government.**

---

**Government Central Press, Jaipur.**