



सत्यमेव जयते

राजस्थान राजपत्र
विशेषांक

साधिकार प्रकाशित

RAJASTHAN GAZETTE
Extraordinary

Published by Authority

भाद्र 09, गुरुवार, शाके 1945-अगस्त 31, 2023
Bhadra 09, Thursday, Saka 1945- August 31, 2023

भाग 4 (ग)

उप-खण्ड (I)

राज्य सरकार तथा अन्य राज्य-प्राधिकारियों द्वारा जारी किये गये (सामान्य आदेशों, उप-विधियों आदि को सम्मिलित करते हुए) सामान्य कानूनी नियम।

Department of Environment and Climate Change
Notification

Jaipur, July 19, 2023

G.S.R.86 .-Whereas the draft notification of the Mangalwad wetland, situated in village Mangalwad, Tehsil Dungla, district Chittorgarh Rajasthan was published as required by rule 7 of the Wetland (Conservation and Management) Rules, 2017 read with the Environment (Protection) Act, 1986 (Central Act No. 29 of 1986), vide notification of the Department of Environment and Climate Change, number G.S.R. 33 dated 24.04.2023 in the Rajasthan Gazette, Extraordinary, Part 4 (ga), sub-part (II), inviting objections and suggestions from all persons likely to be affected thereby before expiry of the period of sixty days from the date on which the copies of the said notification were made available to the public.

And whereas, copies of the Gazette in which the said notification was published were made available to the public on the 24.04.2023.

And whereas, no objections and suggestions were received on the said Draft Notification.

Now therefore, in exercise of the powers conferred by rule 7 of the Wetland (Conservation and Management) Rules, 2017 read with provisions of the Environment (Protection) Act, 1986 (Central Act No. 29 of 1986), the State Government hereby notifies Mangalwad wetland, situated in village Mangalwad, Tehsil Dungla, District Chittorgarh Rajasthan as a wetland and that:-

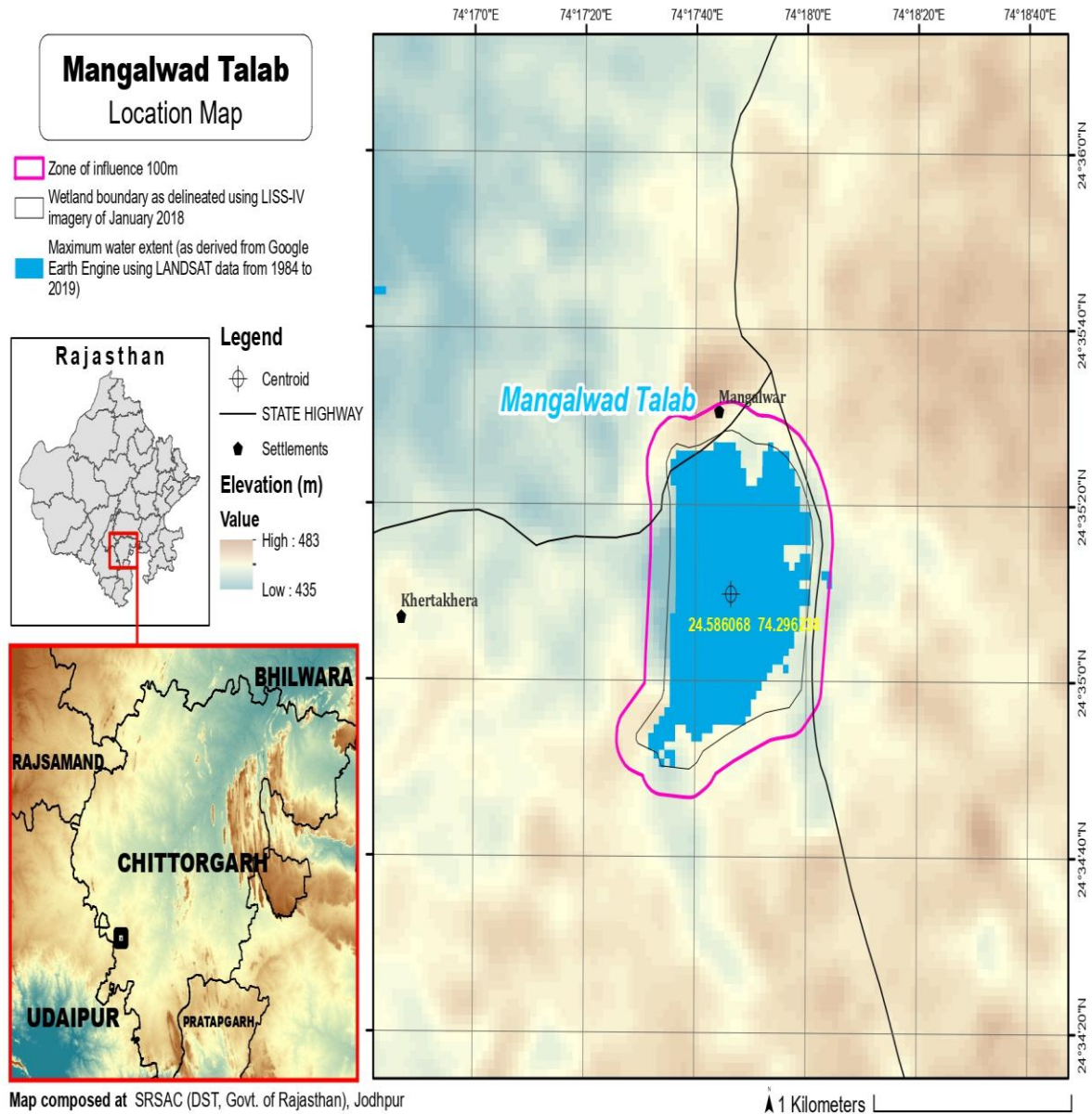
- (i) the extent of the wetland/wetland complex and its zone of influence shall be as described in Schedule-I of this notification;
- (ii) the activities prohibited within the wetland and its zone of influence shall be as listed in Schedule-II of this notification;
- (iii) the activities regulated within the wetland and its zone of influence, i.e. permitted only with permission of the State Government shall be as listed in Schedule-III of this notification. Request for permission for regulated activities may be made to the District Environment Committee headed by the District Collector; and
- (iv) the State Wetland Authority, Rajasthan shall monitor the enforcement of the provisions of this notification.

Schedule-I**Mangalwad Talab Wetland comprising of total area of area of 74.37 Hectare****The geo- coordinates of Mangalwad Talab, Chittorgarh, Rajasthan****Mangalwad Talab**

S.no	Latitude	Longitude	S.no	Latitude	Longitude
1	24.583913	74.292941	18	24.587981	74.300322
2	24.584805	74.293004	19	24.587092	74.300272
3	24.585697	74.293071	20	24.586203	74.300164
4	24.586589	74.293139	21	24.585315	74.300056
5	24.587481	74.293194	22	24.584426	74.299947
6	24.588375	74.293190	23	24.583538	74.299838
7	24.589264	74.293126	24	24.582764	74.299460
8	24.590146	74.292991	25	24.582426	74.298612
9	24.590803	74.293554	26	24.582231	74.297664
10	24.590752	74.294510	27	24.581905	74.296754
11	24.591042	74.295433	28	24.581556	74.295854
12	24.591215	74.296368	29	24.581158	74.294978
13	24.590882	74.297271	30	24.580582	74.294256
14	24.590757	74.298232	31	24.580599	74.293293
15	24.590339	74.299085	32	24.581017	74.292592
16	24.589662	74.299719	33	24.581315	74.291683
17	24.588851	74.300123	34	24.581983	74.291905
			35	24.582606	74.292606

Details of Catchment Area/Zone of influence of Mangalwad Talab, Chittorgarh, Rajasthan**Area/Zone of influence of Mangalwad Talab 38.66 Hectare****The geo- coordinates of zone of influence of Mangalwad Talab, Chittorgarh, Rajasthan****Mangalwad Talab**

S.no	Latitude	Longitude	S.no	Latitude	Longitude
1	24.591549	74.298735	21	24.579730	74.292905
2	24.591126	74.299593	22	24.580054	74.292028
3	24.590484	74.300271	23	24.580505	74.291251
4	24.589725	74.300779	24	24.581139	74.290597
5	24.588895	74.301136	25	24.582015	74.290635
6	24.588017	74.301300	26	24.582677	74.291282
7	24.587127	74.301261	27	24.583320	74.291935
8	24.586239	74.301152	28	24.584213	74.291979
9	24.585350	74.301044	29	24.585105	74.292047
10	24.584462	74.300935	30	24.585997	74.292114
11	24.583573	74.300826	31	24.586889	74.292181
12	24.582695	74.300667	32	24.587782	74.292215
13	24.582019	74.300034	33	24.588676	74.292211
14	24.581599	74.299205	34	24.589557	74.292065
15	24.581474	74.298236	35	24.590445	74.292050
16	24.581153	74.297324	36	24.591231	74.292501
17	24.580812	74.296420	37	24.591686	74.293327
18	24.580417	74.295544	38	24.591624	74.294289
19	24.579843	74.294811	39	24.591923	74.295209
20	24.579661	74.293880	40	24.592132	74.296151
			41	24.591928	74.297091



Schedule-II

Prohibited Activities in Mangalwad Wetland :-

1. Conversion for non wetland uses including encroachments of any kind;
2. Setting up of any new industry and expansion of existing industries;
3. Manufacture or/and handling or/and storage or/and disposal of construction and demolition waste covered under the Construction and Demolition Waste Management Rules, 2016; hazardous substances covered under the Manufacture, Storage and Import of Hazardous Chemical Rules, 1989 or the Rules for Manufacture, Use, Import, Export and Storage of Hazardous Microorganism Genetically Engineered organized or cells, 1989 or the Hazardous Waste (Management, Handling and Transboundary Movement) Rules, 2008;electronic waste covered under the E-Waste (Management) Rules 2016; plastic waste covered under Plastic Waste (Management) Rules, 2016;
4. Solid waste storage and disposal;

5. Discharge of untreated waste and effluents from industries, cities, towns, villages and other human settlements;
6. Any construction of permanent nature except for boat jetties within fifty metres from the mean high flood level observed in the past ten years calculated from the date of commencement of these rules;
7. Commercial mining, stone quarrying and crushing units
8. Commercial water extraction Establishment of large scale commercial livestock and poultry farms;
9. Reducing area/ capacity of the water body;
10. Feeding of fishes and migratory birds by the public;
11. Any type of poaching.

Prohibited Activities in Catchment Area/Zone of Influence :-

1. Discharge of untreated Solid/liquid waste and effluents;
2. Manufacture or/and handling or/and storage or/and disposal of construction and demolition waste covered under the Construction and Demolition Waste Management Rules, 2016; hazardous substances covered under the Manufacture, Storage and Import of Hazardous Chemical Rules, 1989 or the Rules for Manufacture, Use, Import, Export and Storage of Hazardous Microorganism Genetically Engineered organized or cells, 1989 or the Hazardous Waste (Management, Handling and Transboundary Movement) Rules, 2008; electronic waste covered under the E-Waste (Management) Rules 2016; plastic waste covered under Plastic Waste (Management) Rules, 2016;
3. Extraction of commercial water including groundwater.
4. Any type of poaching;

Schedule–III

Regulated Activities in Managalwad Wetland :-

1. Fisheries;
2. Plying of boats;
3. Desilting;
4. Construction of temporary structures;
5. Water extraction for certain purposes.

Regulated Activities in Catchment Area/Zone of Influence :-

1. Conversion of land for any type of construction;
2. Setting up of any new industries and expansion of existing industries;
3. Mining.

[F.No.6 (3) Env/2023]

By order of the Governor,

Shikhar Agrawal,

Additional Chief Secretary to the Government.