

1. Introduction

1.1. About RSPCB

The Rajasthan State Pollution Control Board (RSPCB) is a statutory authority constituted under Water (Prevention and Control of Pollution) Act, 1974. Subsequently, also deemed constituted under the Air (Prevention and Control of Pollution) Act, 1981. The State Board has been entrusted to implement various environmental laws & rules within the jurisdiction of the State of Rajasthan. The State Board ensures proper implementation of the statutes, judicial and legislative pronouncements related to pollution control and environmental protection within the State. Since constitution of the State Board in the year 1975, it has been entrusted with various functions and responsibilities under different enactments. Presently, RSPCB is responsible for the implementation of the provisions of the following Acts and rules:

- The Water (Prevention & Control of Pollution) Act, 1974 and Rules made there off.
- The Air (Prevention & Control of Pollution) Act, 1981 and Rules made there off.
- The Water (Prevention & Control of Pollution) Cess Act, 1977 and Rules made there off.
- The Public Liability Insurance Act, 1991 and Rules made there off.
- The Environmental Protection Act, 1986 and Rules made there off.
- Hazardous Wastes (Management, Handling & Trans-boundary Movement) Rules, 2008 as amended.
- Manufacture, Storage and Import of Hazardous Chemical Rules, 1989 as amended.
- Municipal Solid Waste (Management and Handling) Rules, 2000.
- Bio Medical Waste (Management and Handling) Rules, 1998.
- Ozone Depleting Substances (Regulation) Rules, 2000.
- The Batteries (Management and Handling) Rules, 2001.
- Fly Ash Notification as amended S.O. 2804(E) dated 3rd November 2009.
- Environmental Impact Assessment Notification, 2006.
- The Chemical Accidents (Emergency Planning, Preparedness and Response) Rules, 1996.
- Plastic Waste (Management and Handling) Rules, 2011.
- The Manufacture, Use, Import, Export and Storage of Hazardous Micro Organisms, Genetically Engineered Organism or Cells Rules, 1989.
- Notification No. S.O. 319 (E) dated 7th May 1992 (Restricting certain activities in special specified area of Aravalli Range).
- Notification No. S.O. 1545 (E) dated 25th June 2009 declaring Mount Abu Eco Sensitive Zone.
- The Noise Pollution (Regulation and Control) Rules, 2000.
- The EIA Notification S.O. 1533 dated 14th September, 2006.

1.2. Organizational Structure

Currently the Rajasthan State Pollution Control Board is having two-tier structure with head quarter at Jaipur and Regional Offices at 13 locations. RSPCB has established one (1) Central Laboratory and four (4) Regional Laboratories till date. In addition eight (8) Regional Laboratories are partially operative.

1.3. Organization Structure at Head Office

RSPCB is presently headed by full time Chairperson and Member Secretary as per the provisions of Water Act and Air Act. Currently the following Groups are in operation at Head Office

- Planning Group
- Technical Group – DF, TCD, CPM, Mines, Hotels, CD-SCMG, MUID and SWMC
- Pre Screening Group & Projects Group
- Climate Change Group
- VTR Group
- Water Cess Group
- Legal Group
- Central Laboratory
- Administration Group
- Accounts Group
- Information Technology and System Group

1.4. Regional Offices

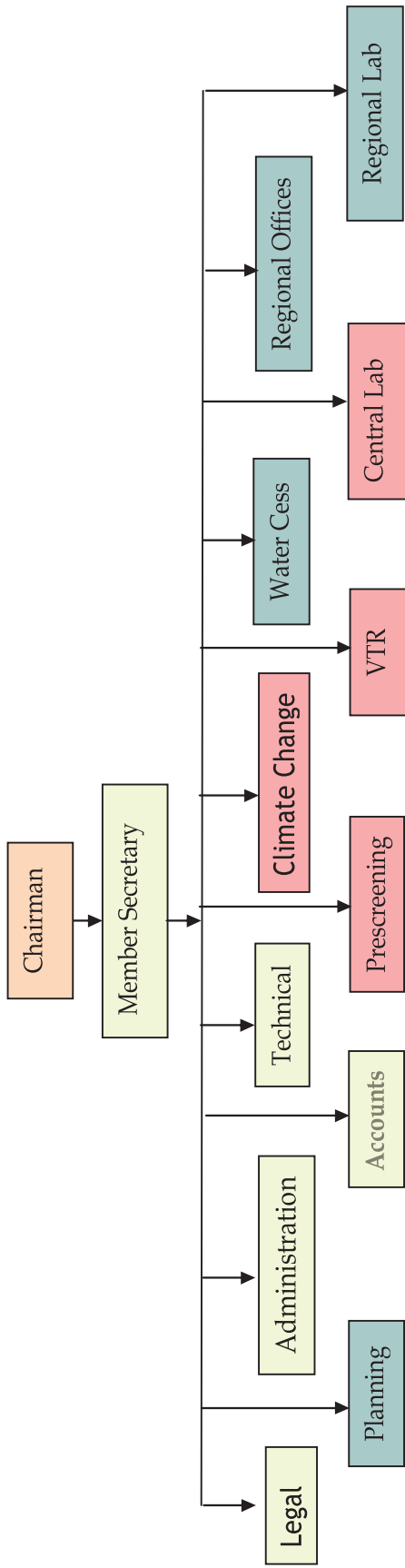
The RSPCB has established thirteen (13) Regional offices in different parts of the state. Senior Environmental Engineer or Environmental Engineer heads different Regional offices with supporting technical, scientific and administrative and accounts staff, location and jurisdiction of the Regional Offices is depicted below:-

S.No.	Location of Regional office	Jurisdiction
1	Kota	Kota, Jhalawar, Bundi, Baran
2	Udaipur	Udaipur, Dungarpur
3	Jodhpur	Jodhpur, Jaisalmer
4	Jaipur	Jaipur, Dausa
5	Alwar	Alwar
6	Bhilwara	Bhilwara, Rajsamand
7	Chittorgarh	Chittorgarh, Pratapgargh, Banswara
8	Pali	Pali, Sirohi

9	Balotra	Barmer, Jalore
10	Bikaner	Bikaner, Sriganaganagar, Hnaumangarh
11	Kishangarh (Ajmer)	Ajmer, Nagaur, Tonk
12	Bharatpur	Bharatpur, Kauroli, Sawaimadhapur, Dholpur
13	Sikar	Sikar, Jhunjhunu, Churu

1.5. Regional Laboratories

The Board has established regional laboratories at Alwar, Jodhpur, Kota and Udaipur. In addition, the Board is in process of developing eight (8) more regional laboratories at Regional Offices except Jaipur, which as of now are partially operative.



Organisational Structure of RSPCB