

DISTRICT ENVIRONMENT PLAN For SAWAI MADHOPUR DISTRICT



**Submitted by:
District Collector and District Magistrate,
Sawai Madhopur**

Index

Sl. No.	Table of Contents	Page No.
1.	Introduction	3
2.	District Map	7
3.	Brief Profile of the District	7
4.	Chapter 1: Waste Management Plan	14
5.	Chapter 2: Water Quality Management Plan	44
6.	Chapter 3: Domestic Sewage Management Plan	48
7.	Chapter 4: Industrial Waste Management Plan	51
8.	Chapter 5: Air Quality Management Plan	54
9.	Chapter 6: Mining Activity Management Plan	57
10.	Chapter 7: Noise Pollution Management Plan	60
11.	Chapter 8: Conservation of Water Bodies	63
12.	Chapter 9: Prevention of Illegal Sand Mining	64
13.	Chapter 10: Environment Threats	65
14.	Chapter 11: Soil and Agriculture Land Management	67
15.	Annexure 1: Details of BMW management and Training of Staff, Sawai Madhopur	69
16.	Annexure 2: List of Villages identified for Annual Implementation Plan (2020-21) under Solid and Liquid Resource Management (SLRM)	73

Introduction

Hon'ble National Green Tribunal, New Delhi has passed an order on 15-07-2019 in O.A. No. 710/2017 titled as Shailesh Singh Versus Sheela Hospital and Trauma Centre Shahjahanpur that it is necessary to have a District Environment Plan to be operated by the District Committee and further vide order dated 26-06-2019 in O.A. No. 360 of 2018 filed by Shree Nath Sharma Vs Union of India and others directed that CPCB shall facilitate the District Magistrates in preparation of District Environmental Plan by placing Model plan on its website. This model plan may be adopted as per local requirements by all District under supervision of District Magistrate.

In Compliance of above NGT Orders and in pursuance of Department of Forest and Environment, GoR letter dated 07-08-2020, District environment plan for Sawai Madhopur district has been prepared covering 9 thematic areas by capturing basic information on action areas through about data points which are essential part of this plan.

In Compliance of GoR order F.5(24)AR/Gr.-3/88 dated 10-05-1999 regarding constitution of **district environment committee** under the chairmanship of district collector in each district, a district environment committee has been constituted in Sawai Madhopur district vide order no. 4739 dated 20-06-2019. Regular meetings (once in two weeks) are organized in all matters related to compliance of hon'ble NGT orders.

The states and UT were Directed in OA No 673/2018 to setup **Special Environment Surveillance Task Force**, Comprising nominees of district magistrate, Superintendent of Police, Regional Officer of state pollution control Board and one person to be nominated by Distt. Judge in his capacity as chairman of legal services Authority on the pattern of direction of NGT dated 07-08-2018 in OA NO 138/2016 " Stench Grips mansa's sacred Ghaggar river (Suo- motu case). In compliance of order dated 20-09-2018 passed by Honble NGT in OA No 673/2018 and in pursuance of department of administrative (Gr-3) Reform Order file no.6 (42) AR/Gr-3/2018 dated 06-11-2018, Special environment surveillance task force in Sawai Madhopur District has been constituted vide District Collector Sawai Madhopur's office Order no 2550 dated 01-04-2019 under the chairmanship of ADM. In Compliance of above NGT order meetings of Task Force is being held regularly to ensure that no illegal mining takes place in river beds (banas and Chambal in sawai madhopur district) of such polluted stretedes.

In Compliance of the order 606/2018 dated 16-01-2019 passed by hon'ble NGT New delhi in Suo-moto Vs CPCB and in pursuance of environment department govt. of Rajasthan letter dated 02-04-2019 , a **special task force** has been constituted comprising three members one each nominated by District Magistrate, Superintendent of Police, Regional Officer of the State pollution Control Boards in concerned Districts and one person is nominated by the Chairman of the District Legal Services Authority (DLSA) for awareness about the SWM Rules, 2016 by involving educational, religious and social organizations including local Eco-clubs. vide distt. Collector sawai madhopur's Office order no 2875 dated 08-04-2019 In compliance of above NGT order regular meetings is being held by commissioner nagar parishad sawai madhopur (member secretary) to ensure compliance of solid waste management rules 2016 and creating awareness by involving educational, religious and social organizations including local Eco-clubs.

The Aims and Objectives of District Environment Plan (DEP)

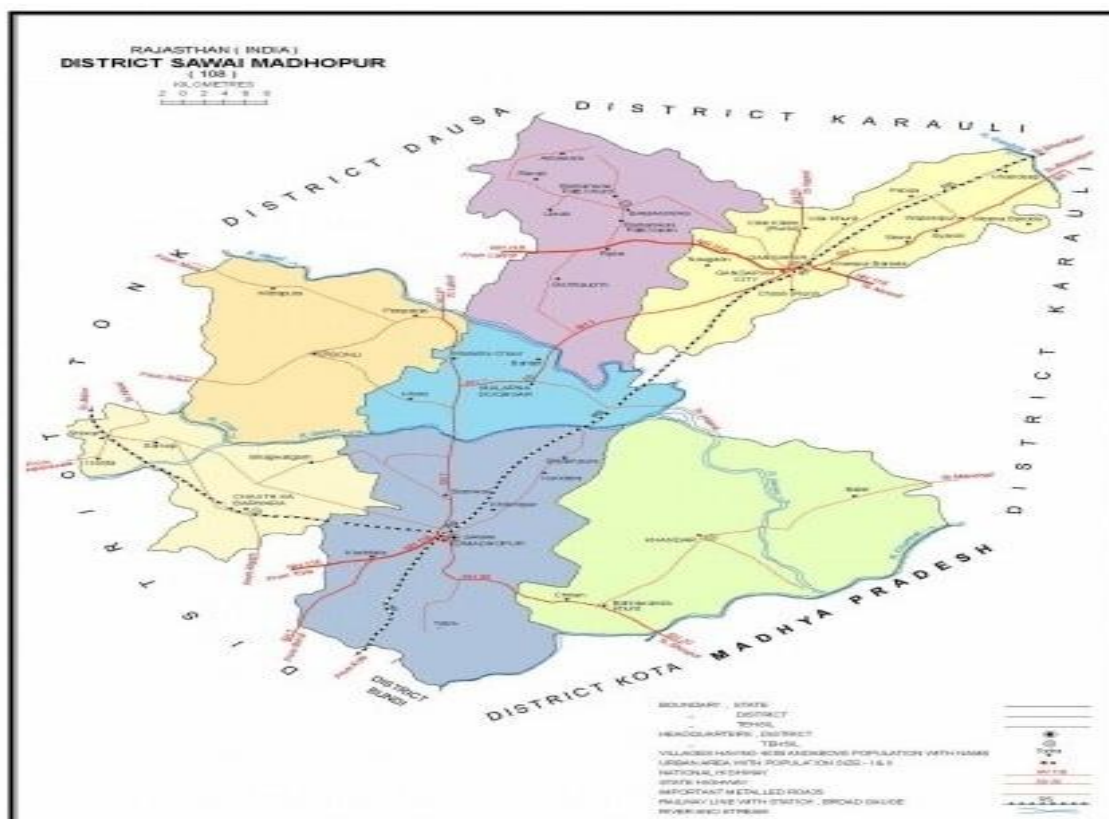
The Aims and Objectives of this District Environment Plan (DEP) are given below:

1. To ensure conservation of environment and natural resources at district level.
2. Restore ecological balance.
3. To achieve the Sustainable Development Goals and district level targets within the prescribed timeline.
4. To ensure sustainability at district level following the principles of resource efficiency.
5. To ensure decentralized micro level planning, execution and monitoring regarding environment conservation.
6. To incorporate all facets of environmental conservation in micro level planning.
7. To harness active participation of all stakeholders in planned environment conservation actions.
8. Assess, Mitigate and monitor adverse impacts of various pollution sources at district level.
9. Capacity building of stakeholder, department, agencies, organizations and individuals at district level to understand and implement micro level environmental conservation actions.
10. To harness inter-departmental coordination for implementation of action plans.
11. To develop local knowledge centers and expertise for developing environmental conservation strategies at district level.
12. To develop and implement micro monitoring system at district level.

This plan has been prepared in line with the model District Environment Plan (DEP) of CPCB and covers following thematic areas;

1. Waste Management Plan
 - I. Solid Waste Management Plan
 - II. Plastic Waste Management
 - III. C&D Waste Management
 - IV. Biomedical Waste Management
 - V. Hazardous Waste Management
 - VI. E-Waste Waste Management
2. Water Quality Management Plan
3. Domestic Sewage Management Plan
4. Industrial Wastewater Management Plan
5. Air Quality Management Plan
6. Mining Activity Management plan
7. Noise Pollution Management Plan
8. Conservation of Water bodies
9. Prevention of Illegal sand mining
10. Enviroment Threats
11. Soil and Agriculture Land

District Map of Sawai Madhopur



Brief Profile of the District

Location & Geographical Area

Geographical Area	Total	5042.99 Sq. Kms.
	Rural	4931.68 Sq. Kms.
	Urban	111.31 Sq. Kms.
Location	North Longitude	Between 25°-45' to 26°-41'
	East Longitude	Between 75°-59' to 77°-0'
Temperature	Maximum	45° C
	Minimum	4° C
	Average Rainfall	873.40 mm
	Sea Level	400 - 600 Above Sea level

Administrative set up

Sub Division	8 (Sawai Madhopur , Gangapur , bamanwas , Bonli , Khandar , Chouth Ka bareara , Malarna Dungar , vajeerpur)	
Tehsils	8 (Sawai Madhopur , Gangapur , bamanwas , Bonli , Khandar , Chouth Ka bareara , Malarna Dungar , vajeerpur)	
Sub Tehsils	3	
Panchayat Samitis	6 (Sawai Madhopur, Gangapur, bamanwas, Bonli, Khandar, Chouth Ka Barwara)	
Gram Panchayats	200	
Nagar Parishad	2 (Sawai Madhopur, Gangapur)	
Land Revenue Circle	67	
Patwar Mandals	268	
Revenue Villages	Total	832
	Inhabited Villages	770
	Uninhabited Villages	62
Electrified Villages	767	
Village Having Water Supply	715	
City	2 (Sawai Madhopur & Gangapur City)	
DAM	18 (Dheel, Mansarovar, Galai Sagar, Soorwal, Devpura, Bhagwatgarh, Pancholas, Mui, Nagolaw, Mora Sagar, Nag Talai, Chandapura, Moti Sagar, Baniyawala, Gandal, Naya Talab, Bhoolanwala, Aakodiya)	

Topography

The district gives a rectangular look in its general shape and falls in the category of the eastern district of the state. District Sawai Madhopur has partly plain and partly undulating hilly terrain. The Sawai Madhopur sub-division can be described as hilly areas while the remaining tract is generally level and plain. The plain is fertile and then soil in most of the parts is light & sandy. The South and south-east portion of the district comprise hills and broken ground which form a part of a vast track of rugged region enclosing the narrow valley of the Chambal River. Ranges of Aravali hills lie in the northern, western and southern parts of the district. Sawai Madhopur sub-division is more or less a mountainous tract. The historical fort of Ranthambore is also situated in the Sawai Madhopur sub-division. The height from the sea levels in the district varies from 450 to 600 meters. The highest peak in the north-western Aravali hill located in Bamanwas tehsil which is 527 meters high Bhairan and Utgir are notable peaks in the south of the district. The area of Gangapur sub-division is almost plain with only a few hillock-scattered here and there. The Banas, Moral and Chambal are the main rivers in the district. The Banas is the largest among them. It is also important to note that no part of the district falls in the category of a desert and also there are no natural springs in the district.

Climate and Rainfall

The climate of the district can be classified as semi-humid. It is characterized by very hot summers and very cold winters with fairly good rainfall during south-west monsoon period. In May, the maximum temperature may sometimes reach up to 40.6°C. The potential evapotranspiration rates are quite high, especially during May and June. The total annual potential evapotranspiration is 1658.0 mm and is the highest in the month of June (220mm).

The normal annual rainfall of the district is 721 mm is slightly higher than average rainfall. The most of the rainfall is received (93.5%) during the monsoon months. District is prone to mild and normal type of droughts. Probability of average annual rainfall exceeding around 1000mm is only 10%. However, there is 90% probability that the average rainfall will be more than 380mm. The probability of occurrence of mean annual rainfall is about 50%.

Month-wise Normal Rainfall (mm) of SawaiMadhopur, 2019

District	Jan	Feb	Mar	April	May	Jun	Jul	Aug	Sep	Oct	Nov	Dec	Total
Sawai Madhopur	7.3	6.4	2.9	2.9	9.8	53.9	253.4	264.5	92.2	19.4	4.7	3.6	721.0

District-wise actual Rainfall (mm)

District	Jun	Jul	Aug	Sep	Oct	Nov	Dec	Jan	Feb	Mar	Apr	May	Total
Sawai Madhopur	19.3	165.4	320.7	185.9	0.0	115.9	2.1	0.0	16.0	0.0	0.0	4.0	829.3

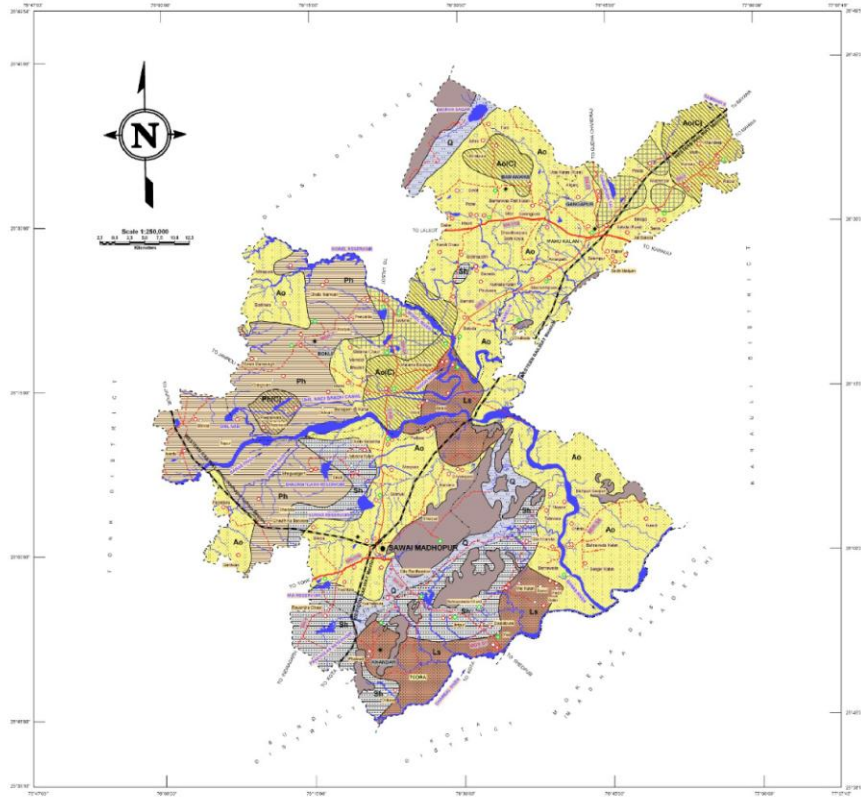
Population

District Name		Population 2011			Percentage Decadal Growth (Persons) (in %) 2011		
		Total	Rural	Urban	Total	Rural	Urban
Sawai Madhopur	Persons	13,35,551	10,69,084	2,66,467	19.79	18.51	25.25
	Males	7,04,031	5,64,592	1,39,439	19.49	18.40	24.11
	Females	6,31,520	5,04,492	1,21,273	20.12	18.62	26.53

Status of Ground Water Development

The stage of ground water development for the district is 128%. Out of total 5 blocks, four blocks viz. Bamanwas, Bonli, Gangapur and SawaiMadhopur have stage of ground water development more than 100% and fall under over-exploited category. No recommendation is extended for additional ground water development except for drinking purposes.

GROUND WATER POTENTIAL ZONE MAP - SAWAI MADHOPUR DISTRICT



DISTRICT INDEX : RAJASTHAN



LEGEND						
POTENTIAL ZONES	WATER BEARING FORMATION	TYPE OF AREA	SPECIFIC YIELD	CHEMICAL QUALITY FOR AGRICULTURE	Admin Boundary:	
AREA SQ.Km	SYMBOL				State Boundary	District Boundary
Ap 1855.37		Ober Alwakan	Non Command	0.05 - 0.12	Suitable	Block Boundary
ANC1 372.92		Ober Alwakan	Non Potential Zone Area	0.05 - 0.12	Suitable	National Highway
Ps 722.1		Phyllite	Command	0.05 - 0.12	Suitable	State Highway
PHC1 68.78		Phyllite	Non Command	0.0115-0.0223	Suitable	Other Road
LI 518.50		Limestone	Command	0.0115-0.0223	Suitable	Railway Line
LVC1 45.28		Limestone	Command	0.015 - 0.07	Suitable	Broad Gauge
Q 184.80		Quartzite	Non Command	0.01 - 0.02	Suitable	Metro Gauge
Ss 529.64		Shale	Non Command	0.01 - 0.015	Suitable	District Headquarter

Block Headquarter	
Village Location	
Monitoring Wells:	
GW1 Well	
Dug Well	
Piezometer	
GGWB Well	
Dug Well	
Tube Well	
Canal	
River / Streams	
Pond / Reservoir	
HR	

Ground Water Department, Rajasthan

European Union
State Partnership Programme

Project: Aquifer Mapping & Development of GIS based Database for Assessment of Village Wise Ground Water Potential and Strategy for Development.

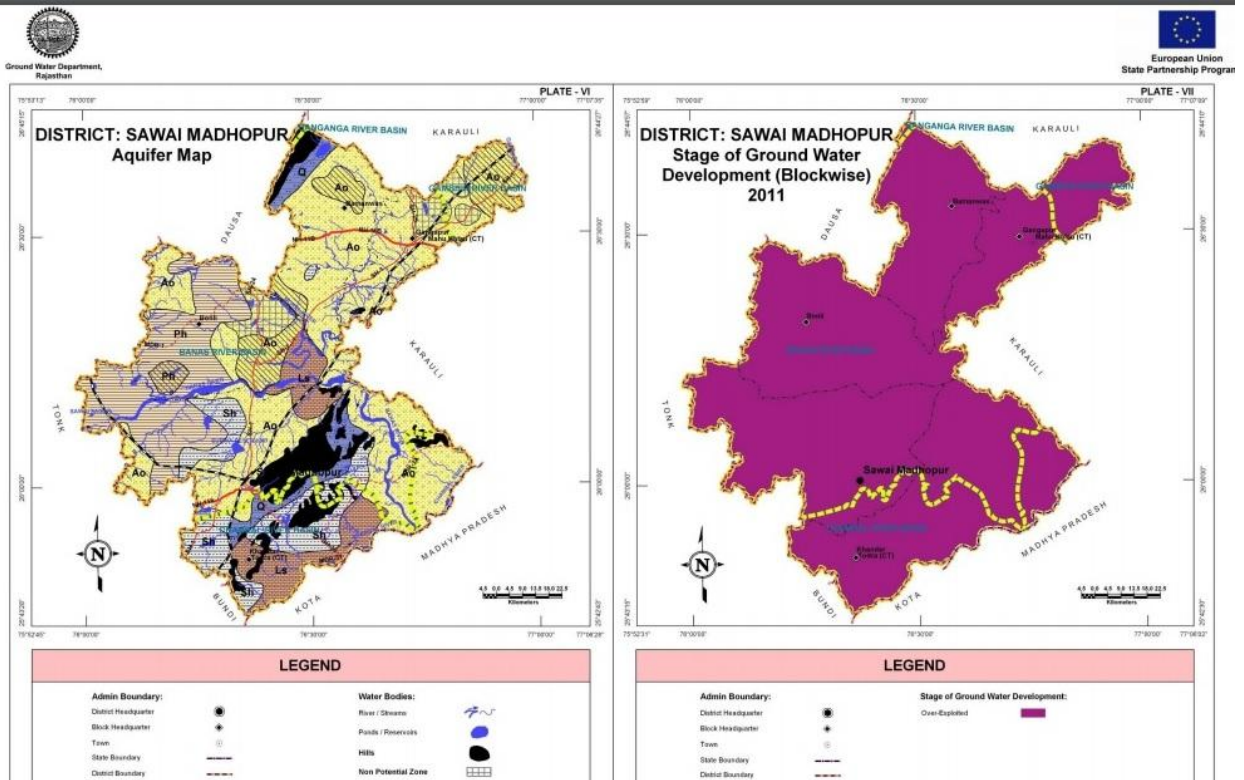
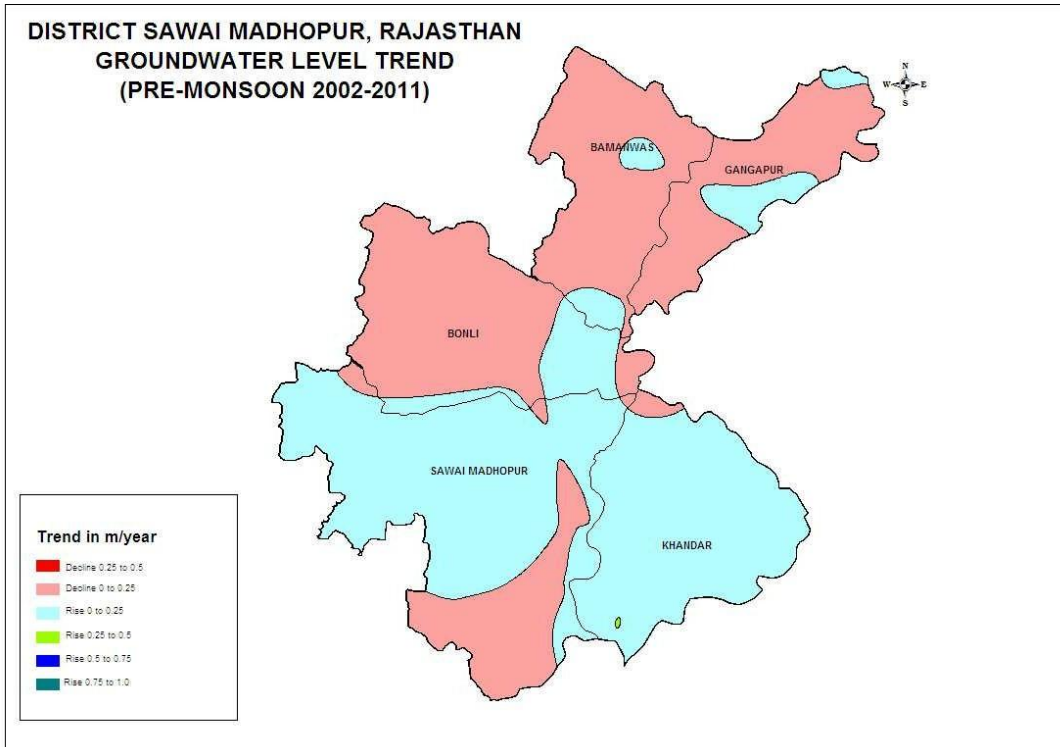
Name of Map: Ground Water Potential Map of Sawai Madhopur District.

Consultant: **ROLIA INDIA LTD.**

Source: Potential Zone Map of Sawai Madhopur District, 2008 & 2009 (Not Available)

Projection: UTM, Zone - 43 N, Datum - 1958 M

© Ground Water Department, Rajasthan, Copyright, 2011.



Ground Water Management Strategy

Ground water should be used judiciously by cultivating crops requiring less watering and use of sprinkler and drip irrigation systems should be encouraged. A modern agriculture management has to be taken into account for effective water management techniques involving economic distribution of water, maintaining minimum pumping hours and also by selecting the most suitable cost-effective cropping pattern i.e. for getting maximum agriculture production through minimum withdrawal. Adopting proper soil and water management even using ground water with somewhat dissolved solids (TDS) may also be suitable for irrigation for growing salt tolerant crops in the area having high salinity.

Ground Water Development

Stage of ground water development in four blocks in the district has exceeded 100%, which indicates that the scope of ground water development is already exhausted in these blocks and the blocks have been categorized as “Over-exploited”. There is no scope for further development in the district for irrigation or industrial use. However, exploratory drilling can be taken up in unexplored area for estimation of aquifer parameters. There is need to control and regulate ground water development in all the blocks in the district. Due caution is to be exercised in further development of ground water in Khandar block, where stage of ground water development has reached 98 % and the block is categorized as ‘Critical’.

Ground Water related Issues and Problems

Long term water level data (pre monsoon 2002-2011) have indicated declining water level trend in major part of the district. Four blocks in the district fall under Over exploited category, which necessitates regulation and control of ground water withdrawals through notification of blocks and further imposing ban on construction of ground water abstraction structures except under indispensable cases.

Bamanwas block is affected by ground water quality problems like salinity, fluoride and nitrate. Salinity, fluoride and iron problems have been reported from SawaiMadhopur block. Bonli block is affected by problem of fluoride, nitrate and iron contamination in ground water.

Chapter 1

Waste Management Plan

1.1 Solid Waste Management Plan

Solid waste means any garbage, refuse, sludge from a wastewater treatment plant, water supply treatment plant, or air pollution control facility and other discarded materials including solid, liquid, semi-solid, or contained gaseous material, resulting from industrial, commercial, mining and agricultural operations, and from community activities, but does not include solid or dissolved materials in domestic sewage, or solid or dissolved materials in irrigation return flows or industrial discharges. Compliance and planning of Solid Waste Management in the district according to Solid Waste Management Rules, 2016 is as follows:

Present Scenario in the district (SW 1-Report on inventory of total solid waste Generation)

Sr. No.	Action Areas	Details of Data Requirement	Units of Measurable Outcome	Please enter Measurable Outcome for District (DC office need to compile ULB datas)	Add new column for each ULB (ULB need to provide) ULB1	ULB 2
	Name of Urban Local Body (ULB)		[name of ULB]		Municipal council Sawai madhopur	Municipal council Gangapur City
	No of ULBs in the District		[Nos]	2	1	1
	Population		[Nos as per 2011 census]	240196	121106	119090
SW1a	SW 1-Report on inventory of total solid waste Generation	Total solid waste Generation	[in MT/Day] or [Not estimated]	115MT	55MT	60MT
SW1b		Qty. of Dry Waste segregated	[in MT/Day] or [Collection Not initiated]	44MT	20MT	24MT
SW1c		Qty. of Wet Waste segregated	[in MT/Day] or [Collection Not initiated]	71MT	35MT	36 MT
SW1d		Qty. of C&D Waste segregated	[in MT/Day] or [Collection Not initiated]	2.2MT	1MT	1.2 MT
SW1e		Qty. of Street Sweeping	[in MT/Day] or [Not estimated]	11MT	5MT	6 MT
SW1f		Qty. of Drain Silt	[in MT/Day] or [Not estimated]	12MT	5MT	7MT

Sr. No.	Action Areas	Details of Data Requirement	Units of Measurable Outcome	Please enter Measurable Outcome for District (DC office need to compile ULB datas)	Add new column for each ULB (ULB need to provide) ULB1	ULB 2
SW1g		Qty. of Domestic Hazardous Waste(DHW) collected	[in MT/Day] or [No Facility]	No Facility	No Facility	No Facility
SW1h		Qty. of Other Waste (Horticulture, sanitary waste, etc.)	[in MT/Day] or [Qty not estimated]	0.6MT	0.3MT	0.3MT
SW1i		No of Old dump sites	[Nos] or [None]	3	2	1
SW1j		Qty stored in dumpsites	[MT] or [Not estimated]	146535 MT	65000 MT	81535 MT
SW1k		No of Sanitary landfills	[Nos] or [None]	None	None	None
SW1l		No of wards	[nos]	90	45	45
SW2a	SW2- Compliance by Bulk Waste Generators	No of BW Generators	[numbers] or [inventory not done]	Inventory not done in gangapur city and 4 in sawai madhopur	4	inventory not done
SW2b		No of on-site facilities for Wet Waste	[numbers] or [No data]	2 in sawai madhopur and no data gangapur city	2	No data
SW3a	SW3- Compliance in segregated waste Collection SW Collection	Total generation	[Automatic] from SW1a	115MT	55MT	60 MT
SW3b		Wet Waste	[in MT/Day] or [Collection Not initiated]	71MT	35MT	36MT

Sr. No.	Action Areas	Details of Data Requirement	Units of Measurable Outcome	Please enter Measurable Outcome for District (DC office need to compile ULB datas)	Add new column for each ULB (ULB need to provide) ULB1	ULB 2
SW3c		Dry Waste	[in MT/Day] or [Collection Not initiated]	44MT	20MT	24 MT
SW3d		C&D Waste	[in MT/Day] or [Collection Not initiated]	2.2MT	1MT	1.2 MT
SW4a	SW4-Waste Management Operations	Door to Door Collection	[100%] / [partial %] / [not initiated]	100%	100%	100%
SW4b		Mechanical Road Sweeping	[100%] / [partial%] / [not initiated]	Not initiated	Not initiated	Not initiated
SW4c		Manual Sweeping	[100%] / [partial%]	100%	100%	100%
SW4d		Segregated Waste Transport	[100%] / [partial %] / [not initiated]	Not initiated	Not initiated	Not initiated
SW4e		Digesters (Bio-methanation)	[% of WW] / [not initiated]	Not initiated	Not initiated	not initiated
SW4f		Composting operation	[% of WW] / [not initiated]	Not initiated	Not initiated	not initiated
SW4g		MRF Operation	[MRF used] / [not installed]	Not initiated	Not initiated	not initiated
SW4h		Use of Sanitary Landfill	[% of SW collected] / [no SLF]	No SLF	No SLF	No SLF
SW4i		Reclamation of old dumpsites	[initiated] / [not initiated]	not initiated	not initiated	not initiated

Sr. No.	Action Areas	Details of Data Requirement	Units of Measurable Outcome	Please enter Measurable Outcome for District (DC office need to compile ULB datas)	Add new column for each ULB (ULB need to provide) ULB1	ULB 2
SW4j		Linkage with Waste to Energy Boilers / Cement Plants	[initiated] / [not initiated]	initiated In sawai madhopur and not initiated in Gangapur City	initiated	not initiated
SW4k		Linkage with Recyclers	[initiated] / [not initiated]	initiated In sawai madhopur and not initiated in Gangapur City	initiated	not initiated
SW4l		Authorization of waste pickers	[initiated] / [not initiated]	initiated	initiated	initiated
SW4m		Linkage with TSDF / CBMWTF	[initiated] / [not initiated]	initiated	initiated	initiated
SW4n		Involvement of NGOs	[initiated] / [not initiated]	not initiated	not initiated	not initiated
SW4o		Linkage with Producers / Brand Owners	[initiated] / [not initiated]	not initiated	not initiated	not initiated
SW4p		Authorisation of Waste Pickers		initiated	initiated	initiated
SW4q		Issuance of ID Cards	[initiated] / [not initiated]	initiated	initiated	initiated
SW5a		SW 5-Adequacy of of Infrastructure	Waste Collection Trolleys	[Nos. Required] / [Nos. Available]	14 Available	5 Available
SW5b	Mini Collection Trucks		[Nos. Required] / [Nos. Available]	44 Available	18 Available	26 Available
SW5c	Segregated Transport		[yes] / [no] / [% area covered]	No	No	No

Sr. No.	Action Areas	Details of Data Requirement	Units of Measurable Outcome	Please enter Measurable Outcome for District (DC office need to compile ULB datas)	Add new column for each ULB (ULB need to provide) ULB1	ULB 2
SW5d		Bulk Waste Trucks	[Nos. Required] / [Nos. Available]	3 Bulk Waste Trucks available	1 Available	2 Available
SW5e		Waste Transfer points	[Nos. Required] / [Nos. Available] / [Not available]	Not Available	Not Available	Not Available
SW5f		Bio-methanation units	[Nos. Required] / [Nos. Available]	3 Bio-methanation units required	1 required	2 required
SW5h		Composting units	[Nos. Required] / [Nos. Available]	3 Composting units required	1 required	2 required
SW5i		Material Recovery Facilities	[used or installed] / [not available]	installed in sawai madhopur not Available in gangapur city	installed	Not Available
SW5k		Waste to Energy (if applicable)	[Required] / [Nos. Available]	No Available	No Available	No Available
SW5l		Waste to RDF	[Required] / [Nos. Available]	2 required	1 required	1 required
SW5m		Sanitary Land fills	[Nos] / [Nos. Available]	No Available	No Available	0
SW5n		Capacity of sanitary landfills	[MT] / / [Nos. Available]	No Available	No Available	0
SW5o		Waste Deposit Centers (DHW)	[Nos] / [Nos. Available]	No Available	No Available	0
SW5p		Other facilities	[give or select from list]	No	No	No

Sr. No.	Action Areas	Details of Data Requirement	Units of Measurable Outcome	Please enter Measurable Outcome for District (DC office need to compile ULB datas)	Add new column for each ULB (ULB need to provide) ULB1	ULB 2
SW6a	SW6-Notification and Implementation of By-Laws	Notification of By-laws	[done] / [in progress] / [not initiated]	Done	Done	Done
SW6b		Implementation of by-laws	[done] / [in progress] / [not initiated]	Done	Done	Done
SW7a	SW7-Adequacy of Financial Status of ULB	CAPEX Required	[INR] / [Not required]	Not Required	Not Required	Not Required
SW7b		OPEX	[INR per Year] / [% of requirement]	1.5 crores in sawai madhopur and 0% requirement gangapur city	1.5 crores	0% requirement
SW7c		Adequacy of OPEX	[Yes] / [No]	No	-	No

Presently the district generates a total of 115MT of solid waste out of which 55MT is generated in Municipal Council Sawai Madhopur and 60MT in Municipal Council Gangapur city. Detailed information about solid waste generation, its disposal, gap in waste management, IEC activities for solid waste management and budgetary requirements for Sawai Madhopur Municipal Corporation is given below.

Nagar parisad Sawai Madhopur		
Sr. No.	Item	Present Status
1.	Total Waste generation at present	55 TPD.
2.	Waste Processed	5 TPD.
3.	Gap in waste management	Approx 50 TPD.
4.	Action Plan for Addressing the Gap With Timeline and Responsible	MRF construction in progress where dry waste can be segregated and recycled Centralized solid waste management processing facility rendering
5.	Public Awareness IEC Activity	Pamphlets for waste segregation distributed time to time. Audio clips run on all auto tippers.
6.	Budget requirement	6.75Crore

There is a Gap of Approx. 50 TPD in waste management in Sawai Madhopur Municipal Corporation and total management of solid waste requires about 6.75 crore budgetary allocation.

Swachh Bharat Abhiyan (Gramin) was launched in October 2014 with an objective to bring about improvement in the cleanliness, hygiene and the general quality of life in rural areas. Solid and Liquid Waste Management (SLWM) is one of the key components of the programme. The project has been renamed as Solid Liquid Resource Management considering the waste, a resource. Solid and Liquid Resource Management (SLRM)/ Plastic Waste Management is instrumental for building a rural SLRM implementation framework for Plastic Waste Management to various stakeholders from districts and states across India. Each technological theme (plastics, menstrual health, biodegradable waste, animal waste, grey water and faecal sludge) explored here addresses a particular type of waste, the challenges present and recommends solutions for sustainable value generation. Sawai

Madhopur district administration is continuously making efforts to implement solid and liquid resource management in rural areas.

The present status (2020-21) of SLRM for the district as a whole is given below and detailed List of villages identified for Annual Implementation Plan (2020-21) of Solid and Liquid Resource Management (SLRM) under Swachh Bharat Mission is presented in Annexure-2. It is worthy to mention here that Chauth ka Barwara and Bauli Panchyat Samitis have been selected for plastic waste management. In Sawai Madhopur district only five villages having population above 5000 have been selected for SLRM while the number of villages having population below 5000 is 146.

Sr.no.	District	Solid and Liquid Resource Management (SLRM) for District as a Whole										
		Financial		Physical		Financial		Segregation Bins at Public Places		Wages for collection and segregation fin. FFC 100%	Equipment for clearing the premises and segregation of waste fin. FFC 100%	Soild Waste
		Soild Waste Mg.	Liquid Waste Mg.	No. of up to 5000 Villages	Population	Solid Waste Mg.	Liquied Waste Mg.	Phy.	FIN FFC 100%			
1.	Sawai Madhopur	23.66	346.99	146	204017	122.41	571.25	967	145.05	1172.31	7.55	102.55

Solid Waste Management plan for the district is as follows:

Solid waste to be managed in accordance with the SWM Rules, 2016 issued by the Ministry of Environment and Forests, Government of India,

Sl. No.	Action Points	Strategy and approach	Stake holders responsible
1.	Collection, Segregation & Treatment of solid waste	Solid waste to be managed in accordance with the SWM Rules, 2016	ULBs
2.	Strengthening the capacities of the ULBs	All ULB staff to be trained to impart adequate knowledge for proper implementation of sustainable SWM Logistic infrastructure to be made available from the financial allocation made by the Govt in this regard.	ULBs
3.	Notification and Implementation of By-Laws	ULBs will frame bye-laws incorporating the provisions of SWM Rules, 2016 and notify accordingly.	ULBs DIPRO
4.	Awareness	Public awareness to be created through IEC campaign with participation of SHGs, NGOs, students. Leaflets explaining waste segregation practice to be distributed in all the household.	ULB, NGOs, SHGs Insp. of Schools DIPRO
5.	Monitoring and Review	EO of ULBs will time to time monitor/review the performance of their respective ULB on waste segregation, processing, treatment and disposal and take corrective measures. Dist. Level Committee will also sit bi-monthly to review the status of execution of SWM.	EO of ULBs Dist. Level Committee

1.2 - Plastic Waste Management:

The Ministry of Environment, Forest and Climate Change has notified the Plastic Waste Management (Amendment) Rules 2018. The amended Rules lay down that the phasing out of Multilayered Plastic (MLP) is now applicable to MLP, which are “non-recyclable, or non-energy recoverable, or with no alternate use.”

The amended Rules also prescribe a central registration system for the registration of the producer/importer/brand owner. The Rules also lay down that any mechanism for the registration should be automated and should take into account ease of doing business for producers, recyclers and manufacturers. The centralized registration system will be evolved by Central Pollution Control Board (CPCB) for the registration of the producer/importer/brand owner. While a national registry has been prescribed for producers with presence in more than two states, a state-level registration has been prescribed for smaller producers/brand owners operating within one or two states. Present scenario and subsequent planning for Plastic Waste Management (for each ULB) is as follows:

Present Scenario in the district:

(ii) Plastic Waste Management (for each ULB)						
No.	Action Areas	Details of Data Requirement	Measurable Outcome	Please enter Measurable Outcome for District	Add new column for each ULB	ULB2
	Name of ULB		[name of ULB]		Municipal council Sawai madhopur	Municipal council Gangapur City
	Population		[Nos as per 2011 census]	240196	121109	119090
PW1a	PW1- Inventory of plastic waste generation	Estimated Quantity of plastic waste generated in District	[MT/day] / [Not Estimated]	0.36MT	3 MT	0.36 Mt.
PW2a	PW2- Implementation of Collection	Door to Door collection	[100%] / [partial %] / [not initiated]	100%	100%	100%
PW2b		Segregated Waste collection	[100%] / [partial %]	74%(as an average)	100%	47%
PW2c		Plastic waste collection at Material Recovery Facility	[MRF used] / [not installed]	MRF used in Sawai Madhopur and not installed in Gangapur City	MRF used	Not Installed
PW2d		Authorization of PW pickers	[Nos] / [not initiated]	117	40	77
PW2e		PW collection Centers	[Nos] / [not established]	not established	not established	not established
PW3a	PW3- Establishment of linkage with Stakeholders	Established linkage with PROs of Producers	[Nos] / [not established]	not established	not established	not established
PW3b		Established linkage with NGOs	[Nos] / [not established]	not established	not established	not established
PW4a	PW4- Availability of facilities for Recycling or	No. of PW recyclers	[Nos]	0	0	0

PW4b	utilization of PW	No Manufacturers	[Nos]	0	0	0
PW4c		No of pyrolysis oil plants	[Nos]	0	0	0
PW4d		Plastic pyrolysis	[Quantity in MT sent per Month]	0	0	0
PW4e		Use in road making	[Quantity MT used per Month]	0	0	0
PW4f		Co-processing in Cement Kiln	[Quantity in MT sent per Month]	0.5	0.5	0
PW5a	PW5- Implementation of PW Management Rules, 2016	Sealing of units producing < 50-micron plastic	[All sealed] / [Partial] / [no action]	No action in Sawai madhopur and partial action taken in Gangapur City	No Action	Partial
PW5b		Prohibiting sale of carry bags < 50 micron	[Prohibited] / [Partial] / [no action]	No action in Sawai madhopur and partial action taken in Gangapur City	No Action	Partial
PW5c		Ban on Carry bags and other single use plastics as notified by State Government	[Implemented] / [Partial] / [no action] / [No Ban]	Partial Implementation in Sawai Madhopur and Implemented in Gangapur City	Partial	Implemented
PW6a	PW6- Implementation of Extended Producers Responsibility (EPR) through Producers/Brand-owners	No of Producers associated with ULBs	[Nos] / [None]	None	None	None
PW6b		Financial support by Producers / Brand owners to ULBs	[Nos] / [None]	None	none	None
PW6c		Amount of PRO Support	[Rs...]	0	0	Rs. 0
PW6d		Infrastructure support by Producers / Brand owners to ULBs	[Nos of Producers] / [None]	None	None	None
PW6e		No of collection centers established by Producers / Brand owners to ULBs	[Nos] / [None]	None	None	None

The ULBs on an average generates about 0.36 Metric Tons of Plastic Waste (PW) per day. The door-to-door collection of plastic waste is 100 per cent in the district while average segregated waste collection is 53.5 per cent. A total of 117 PW pickers are working in the district. Rural areas of the district also produce Plastic Waste. It has been observed that disposal of plastic waste is a serious concern due to improper collection and segregation system. A very small amount of total plastic waste is effectively recycled; the remaining plastic is sent to landfills etc.

Plastic Waste Management plan for the district is as follows :

Plastic waste to be managed in accordance with the Plastic Waste Management (Amendment) Rules, 2018 with an emphasis on the 3R principles of Reduce, Reuse and Recycle; ULBs will manage the Plastic Waste generated under their respective jurisdiction while PHE will manage plastic waste in respect of rural areas as per proposal being prepared for engagement of GP wise vendor for Plastic Waste collection.

Sl. No	Action Points	Strategy and approach	Stake holders responsible
1	Implementation of Collection	Door to Door collection, Segregated Waste collection, Plastic waste collection at MRF, Authorization of PW pickers, PW collection Centers to be ensured	ULBs
2	Establishment of linkage with Stakeholders	List of PROs of producers/NGO to be collected and steps to be taken for initiating linkage as per SWMR-2016 and PWMR-2018	ULBs
3	Availability of facilities for Recycling or utilization of PW	Each ULBs in consultation with DI&CC will prepare plan for setting up facilities for Recycling or utilization of PW. Plan to be submitted in next Dist Committee meeting.	ULBs GM DI&CC
4	Implementation of PW Management Rules, 2016	To Ensure Implementation of PW Management Rules, 2016, and 2018 ULBs in association with Dist administration will conduct Surprise inspection on the commercial establishments for the eradication of banned plastic and imposes fine for those who store, sell and use the same. Public Awareness and participation also to be created in this regard	ULBs
5	Implementation of Extended Producers Responsibility (EPR) through Producers/ Brand-owners	ULBs will identify Producers/Brand-owners and will act in accordance with Govt policies/notifications in this regard	ULBs

1.3- CONSTRUCTION & DEMOLITION-(C & D Waste Management):

In India, it is very common to see huge piles of C&D waste, stacked alongside of major roads resulting in traffic jams, congestion and disruption & chocking of drains. Around 30% of the total municipal solid waste generated in the country comprises of C&D waste. The C&D Waste generated in each city would reflect different characteristics based on each city's growth pattern and lifestyle. While retrievable items such as bricks, wood, metal, tiles are recycled, the concrete and masonry waste, accounting for more than 50% of the waste from construction and demolition activities, are not being currently recycled in India. Construction activities occur to build/rebuild new structures or old structures. Demolition activities are growing due to old structures needing restructuring or replacement with time to make way for vertical structures or flats in line with growing needs of the society. All such activities generate C&D waste. Disposal of such debris in a safe environment is a big challenge for the builders, developers, and owners. When on one hand the disposal of debris is a challenge, then, on the other hand, there is an acute shortage of naturally available aggregates for the construction of buildings. Reduction of this demand is possible only with the reusing or recycling of waste generated from the construction activities. For the district the inventory of C&D waste not estimated in Sawai Madhopur and 1200kg /Day reported by Gangapur city. Municipalities and Gaon Panchayats have been asked to ensure that the wastes are disposed without affecting the nearby Environment.

Present scenario and subsequent planning for Plastic Waste Management (for each ULB) is as follows:

Present Scenario in the district:

(iii) C&D Waste Management						
No.	Action Areas	Details of Data Requirement	Measurable Outcome	Please enter Measurable Outcome for District	ULB1	ULB2
	Name of ULB		[name of ULB]		Municipal council Sawai madhopur	Municipal council Gangapur City
	Population		[Nos as per 2011 census]	240196	121109	119090
CD1	Inventory of C&D waste generation					-
CD1a		Estimated Quantity	[Kg/Day] / [Not estimated]	inventory of C&D waste not estimated in sawai madhopur and 1200kg /Day reported by Gangapur city	Not estimated	1200 kg/Day
CD2	Implement scheme for permitting bulk waste generators					
CD2a		Issuance of Permissions by ULBs	[Initiated] / [Not initiated]	Not initiated	Not initiated	Not initiated
CD3	Establishment of C&D Waste Deposition centers				-	-
CD3a		Establishment of Deposition Points	[Yes] / [No]	yes	Yes	Yes
CD3b		C&D Deposition point identified	[Yes] / [No]	yes	Yes	Yes
CD4	Implementation of By-Laws for CD Waste Management					-

CD4a		Implementation of By-laws	[notified] / [not notified]	notified	notified	notified
CD4b		Collection of Deposition / disposal Charges	[Initiated] / [Not initiated]	Not initiated	Not initiated	Not initiated
CD5	Establishment of C&D Waste recycling plant or linkage with such facility					
CD5a		Establishment CD Waste Recycling Plant	[Established] / [Sent to shared Facility] / [No facility exists]	No facility exists	No facility exists	No facility exists
CD5b		Capacity of CD Waste Recycling Plant	[MT/Day] / [Not available]	Not available	Not available	Not available

C & D Waste Management plan for the district is as follows:

Sl. No.	Action Points	Strategy and approach	Stake holders responsible
1	Inventory of C&D waste generation	<ol style="list-style-type: none"> 1. Survey and Investigate the C & D generators under the jurisdiction of ULB. 2. Identify regular bulk waste generators (Contractors or Builders) 3. Distribution of Staffs in Collecting, Transporting and Processing of C & D 4. Treatment of C & D Wastes or Transformation 	ULB Staffs
2	Implement scheme for permitting bulk waste generators	<ol style="list-style-type: none"> 1. Contractors/Builders should have registration id in the ULBs to collect & transfer the C & D Wastes to the C & D Deposition Center for treatment. 2. The Generators should contact the ULB staffs or Constructors/Builders 3. The generators should be charged as per by law. 	<ol style="list-style-type: none"> 1. C & D Wastes generators 2. Contractors/ Builders 3. ULB Staffs 4. C & D Deposition Center staffs
3	Establishment of C&D Waste Deposition centers	<ol style="list-style-type: none"> 1. Identify and allocation of land for deposition center 2. Construction and fencing of deposition center. 3. Identify the transportation point. 	<ol style="list-style-type: none"> 1. ULB 2. NGOs
4	Implementation of By-Laws for C & D Waste Management	<ol style="list-style-type: none"> 1. Publish notification for registration of C & D Waste generators, generator charge, transportation cost, selling price, etc. By-Laws. 	<ol style="list-style-type: none"> 1. ULB staffs 2. C & D Deposition center staffs
5	Establishment of C&D Waste recycling plant or linkage with such facility	<ol style="list-style-type: none"> 1. Involve NGOs or to startups to establish a C&D Waste recycling plant, 2. Any ULB initiative (if possible) 	NGOs

1.4- Bio-Medical Waste Management:

‘Biomedical waste’ (BMW) means any waste, which is generated during the diagnosis, treatment or immunization of human beings or animals or research activities

Present Scenario in the district:

Present status of Bio-Medical Waste Management		
S.No.	Point	Present Status
1	Total Waste generation at present	60 Institutes
2	Waste Processed	55 Institutes
3	Gap in waste management	4 new Upgraded PHC
4	Action Plan for Addressing the Gap with Timeline and Responsible	MRS Registration is in Process Within a month complete.
5	Public Awareness IEC Activity	All related IEC had already Displayed at all Institution
6	Training for Waste Management	902 Medical Staff trained against 974

There is a total of 60 health Institutes which generates BMW out of which 55 institutes have status of proper processing of BMW. Out of total 974 medical staff 902 are well trained for BMW management.

There are 59 bedded hospitals and 266 non bedded health care facilities in the district along with 59 path labs and no dental clinics which produces significant amount of Bio Medical Waste. The detail of health care facilities in rural areas is also provided here.

(iv) Biomedical Waste Management (for each ULB)							
Sr No.	Action Areas	Details of Data Requirement	Measurable Outcome	Please enter Measurable Outcome for District	ULB1	ULB2	Rural (Other than ULB)
	Name of ULB		[name of ULB]		Municipal council Sawai madhopur	Municipal council Gangapur City	
	Population		[Nos as per 2011 census]	240196	121109	119090	1341804
BMW1	Inventory of Biomedical Waste Generation						
BMW1a		Total no. of Bedded Hospitals	[Nos] / [No inventory]	59	4	3	52
BMW1b		Total no. of non-bedded HCF	[Nos] / [No inventory]	266	0	0	266
BMW1c		Total no. Clinics	[Nos] / [No inventory]	0	0	0	0
BMW1d		No of Veterinary Hospitals	[Nos] / [No inventory]	NA	NA	NA	NA
BMW1e		Pathlabs	[Nos] / [No inventory]	59	4	3	52
BMW1f		Dental Clinics	[Nos] / [No inventory]	0	0	0	0
BMW1g		Blood Banks	[Nos] / [No inventory]	2	1	1	0
BMW1h		Animal Houses	[Nos] / [No inventory]	0	0	0	0
BMW1i		Bio-research Labs	[Nos] / [No inventory]	0	0	0	0
BMW1j		Others	[Nos] / [No inventory]	0	0	0	0
BMW2	Authorization of HCFs by SPCBs / PCCs						
BMW2a		Bedded HCFs	[Nos Authorized]	59	4	3	48
BMW2b		Non-bedded HCFs	[Nos Authorized]	266	0	0	0
BMW3a	Biomedical Waste Treatment and Disposal Facilities (CBMWTFs)			Hoswin Incinerator , Alwar	Hoswin Incinerator , Alwar	Hoswin Incinerator , Alwar	Hoswin Incinerator , Alwar
BMW3a		No of CBMWTFs	[Nos] / None	None	None	None	None

BMW3b		Linkage with CBMWTFs	[Yes]	59	4	3	48
BMW3c		Capacity of CBMWTFs	[Adequate]	[Adequate]	[Adequate]	[Adequate]	[Adequate]
BMW3d		Requirements of CBMWTFs	[Require] / [not required]	CBMWTFs under process in sawai madhopur and required in Ganganpur City	Under Process	required	required
BMW3e		Captive Disposal Facilities of HCFs	59	59	4	3	48
BMW4	Compliance by CBMWTFs						
BMW4a		Compliance to standards	[Meeting]	Meeting	Meeting	Meeting	Meeting
BMW4b		Barcode tracking by HCFs / CBMWTFs	[100%] / [Partly %] / [None]	100% in sawai madhopur, gangapur city & 48 Institutions in Rural Area	100%	100%	100% other than 4 Institutions
BMW4c		Daily BMW lifting by CBMWTFs	[Kg / day]	0	21.36	10.18	1.095 per day Per Institutions
BMW5	Status of Compliance by Healthcare Facilities						
BMW5a		Pre-segregation	[100%]	Pre-segregation is 100% in sawai madhopur & gangapur city	100%	100%	100%
BMW5b		Linkage with CBMWTFs	[100%]	Linkage with CBMWTFs is 100% in sawai madhopur & gangapur city	100%	100%	100%

Bio Medical Waste Collection Report From 01 January 2020 to 30 November 2020

Government General Hospital, Sawai Madhopur

S.No.	Month	Yellow Bags	Red bags	White Box	Blue Box	Weight
1	January	278	129	21	2	1326.143
2	February	187	74	13	0	1053.247
3	March	304	183	17	0	1766.005
4	April	242	153	5	0	1661.359
5	May	374	101	10	0	1921.818
6	June	484	155	28	0	2358.362
7	July	453	361	1	0	2653.403
8	August	303	287	9	4	1808.043
9	September	338	342	6	4	2195.698
10	October	292	327	19	4	2217.904
11	November	185	119	12	0	919.516
	Total	3440	2231	141	14	21689.901

District Hospital Sawai Madhopur is the prime health care institution of the district. The detail of BMW management in this institution is given below. It is evident that there is no gap in waste management and total management of BMW requires Rs 19 lakhs as budgetary allocation.

Sr. No.	Item	Present Status
1.	Total Waste generation at present	1 (DH SWM)
2.	Waste Processed	1 (DH SWM)
3.	Gap in waste management	Nil
4.	Action Plan for Addressing the Gap With Timeline and Responsible	Renewal procedure is in Process
5.	Public Awareness IEC Activity	All related IEC Displayed at every point of waste Generation
6.	Training for Waste Management	250 Medical Staff trained against 260
7.	Budget requirement	19 lakhs

It is worthy to mention here that more than 90 per cent of total medical and para-medical staff is well trained for disposal of bio-medical waste.

The details of bio medical waste disposal process, disposal centres and training of staff is presented in Annexure -1.

Biomedical waste Management plan for the district is as follows:

Sl. No.	Action Points	Strategy and approach	Stake Holders Responsible
1.	Collection, Segregation & Treatment of solid waste	Biomedical Waste to be managed in accordance with the Bio Medical Waste Management Rules, 2016.	All HCF concerned
2.	Preparation of 'Inventory of Biomedical Waste Generation'	Inventorisation of Occupiers and data on bio-medical waste generation, treatment & disposal which are to be updated at least two times each year	Jt. DHS, Sawai madhopur 1. Dist. Vet. Officer 2. All BDOs
3.	Capacity building/training of HCFs	HCF should be made aware of their roles and responsibilities under the Bio Medical Waste Management Rules, 2016 For proper management of the waste in the healthcare facilities the technical requirements of waste handling are needed to be understood and practiced by each category of the staff in accordance with the BMW Rules, 2016.	Jt. Director Of Health Services, Sawai madhopur
4.	Authorization of HCFs	Every HCFs and Clinical Establishment will be asked to get authorization from PCB Raj As per the Bio Medical Waste Management Rules, 2016	PCB Raj Jt. DHS, Sawai madhopur EO of All MBs
5.	Biomedical Waste Treatment and Disposal Facilities (CBMWTFs)	Matter relating to setting up a Common Biomedical Waste Treatment and Disposal Facilities (CBMWTFs) in the district will be taken up with Health Deptt/PCB	Dist Admin. PCB Raj Jt. DHS, Sawai madhopur
6.	Monitoring and Review	District Level Monitoring Committee under the chairmanship of district Collector, Sawai Madhopur to monitor the compliance of the provisions of these rules by the HCFs The District Level Monitoring Committee will comprise of ADC (Health), Jt.DHS, Sawai madhopur, representatives from PCB Raj, Public Health Engineering Department, ULBs, Indian Medical Association among others Jt.DHS, Sawai madhopur will be the Member Secretary of this Committee.	District Level Monitoring Committee

1.5 - Hazardous Waste Management:

“Hazardous waste” means any waste which by reason of characteristics such as physical, chemical, biological, reactive, toxic, flammable, explosive or corrosive, causes danger or is likely to cause danger to health or environment, whether alone or in contact with other wastes or substances.

Present Scenario in the district:

(v) Hazardous Waste Management						
No.	Action Areas	Details of Data Requirement	Measurable Outcome	Please enter Measurable Outcome for District	ULB1	ULB3
					Municipal council Sawai madhopur	Municipal council Gangapur City
HW1	Inventory of Hazardous Waste					
HW1a		No of HW Generating Industry	[Nos.]	0	0	0
HW1b		Quantity of HW	[MT/Annum]	0 MT/annum	0 MT/annum	0 MT/annum
HW1c		Quantity of Incinierable HW	[MT/Annum]	0 MT/annum	0 MT/annum	0 MT/annum
HW1d		Quantity of land-fillable HW	[MT/Annum]	0 MT/annum	0 MT/annum	0 MT/annum
HW1e		Quantity of Recyclable / utilizable HW	[MT/Annum]	0 MT/annum	0 MT/annum	0 MT/annum
HW2	Contaminated Sites and illegal industrial hazardous waste dumpsites					
HW2a		No of HW dumpsites	[Nos] / [None]	None	None	None
HW2c		Probable Contaminated Sites	[Nos] (provide list)	0	0	0

HW3	Authorization by SPCBs/PCCs					
HW3a		No of industries authorized	[Nos]	0	0	0
HW3b		Display Board of HW Generation in front of Gate	[Nos]	0	0	0
HW3	Availability of Common Hazardous Waste TSDF					
HW3a		Common TSDF	[Exists] / [No] / [Sent to Other District within State]	No	No	No
HW3b		Industries linkage with TSDF	[Nos.]	0	0	0
HW4	Linkage of ULBs in District with Common TSDF					
HW4a		ULBs linked to Common TSDFs for Domestic Hazardous Waste	[Yes] / [No]	No	No	No

Hazardous Waste Management plan for the district is as follows:

Sl. No.	Action Points	Strategy and approach	Stake holders responsible
1.	Preparation of 'Inventory of Hazardous Waste Generators'	Including Manufacturer /recycler/ refurbisher /handler of Lead Acid battery, and other lead scrap/ashes/residues not covered under Batteries (Management and Handling) Rules, 2001.	1. General Manager ,District Industries & Commerce Centres (DICC) GM, DI&CC, Sawai madhopur 2. EO of ULBs 3. PCB, Raj 4. All BDOs
2.	Awareness/training of Waste Generators	ULBs take necessary steps for public awarness and importance of segregation of potentially hazardous domestic waste. Training on Handling/disposal will be provided to informal sector persons who are engaged in trading, dismantling, and recycling of e-waste/batteries.	1. GM, DI&CC, Sawai madhopur 2. Representative from PCB Raj
3.	Authorization of Industries	PCB Raj	
	Waste deposition centres for domestic hazardous waste	ULBs will establish waste deposition centres for domestic hazardous waste and give direction for waste generators to deposit domestic hazardous wastes at this centre for its safe disposal.	ULBs
5.	Monitoring of Compliance	District Level Monitoring Committee under the chairmanship of district collector, Sawai madhopur to monitor the compliance of the provisions of Hazardous waste Management Rules The District Level Monitoring Committee will comprise of ADC GM, DI&CC Sawai Madhopur, representatives from PCB Raj, Public Health Engineering Department, ULBs as members among others. GM, DI&CC Sawai madhopur shall be the Member Secretary of this Committee.	District Level Monitoring Committee

1.6 -E- Waste Management:

Electronic waste or e-waste describes discarded electrical or electronic devices. Used electronics which are destined for refurbishment, reuse, resale, salvage recycling through material recovery, or disposal are also considered e-waste

At present E-waste management is in nascent stage in the district and only informal trading, dismantling, and recycling of e-waste exists in the district.

Present Scenario in the district:

(vi) E-Waste Waste Management						
No.	Action Areas	Details of Data Requirement	Measurable Outcome	Please enter Measurable Outcome for District	Municipal council Sawai madhopur	Municipal council Gangapur City
EW1	Status of facilitating authorized collection of E-Waste					
EW1a		Does the citizen are able to deposit or provide E-Waste through Toll-free Numbers in the District	[Yes] / [No]	No	No	No
EW1c		Collection centers established by ULB in District	[Nos] / [None]	None	None	None
EW1d		Collection centers established by Producers or their PROs in the District	[Nos] / [None]	None	None	None
EW1e		Does the district has linkage with authorized E-Waste recyclers / Dismantler	[Yes] / [No]	no	no	No
EW1f		No authorized E-Waste recyclers / Dismantler	[Nos] / [None]	none	none	None
EW2	Status of Collection of E-Waste					
EW2a		Authorizing E-Waste collectors	[Authorized] / [None]	none	none	none
EW2b		Involvement of NGOs	[Yes] / [No] / [Nos]	no	no	no

EW2c		Does Producers have approached NGOs/ Informal Sector for setting up Collection Centers.	[Yes] / [No] / [Nos]	no	no	no
EW2d		Does ULBs have linkage with authorized Recyclers / Dismantlers	[Yes] / [No]	no	no	no
EW4	Control E-Waste related pollution					
EW4a		Does informal trading, dismantling, and recycling of e-waste exists in District	[Yes] / [No]	no	no	no
EW4b		Does the administration closed illegal E-Waste recycling in the District	[Yes] / [No] / [Nos]	no	no	no
EW4c		No of actions taken to close illegal trading or processing of E-Waste	[Nos]	0	0	0
EW5	Creation of Awareness on E-Waste handling and disposal					
EW5a		Does PROs / Producers conducted any District level Awareness Campaigns	[Yes] / [No] / [Nos]	no	no	no
EW5c		Does District Administration conducted any District level Awareness Campaigns	[Yes] / [No] / [Nos]	no	no	no

E- Waste Management plan for the district is as follows:

Sl. No.	Action Points	Strategy and approach	Stake holders responsible
1.	Collection of E-Waste	<ul style="list-style-type: none">• Collection Centers to be established by ULBs in District• Door to door collection• Authorizing E-Waste collectors	EO of ULBs
2.	Control E-Waste related pollution and Awareness	<ul style="list-style-type: none">• Creation of Awareness on E-Waste handling and disposal	Dist Administration, GM DI&CC, ULBs NGOs

Chapter 2

Water Quality Management Plan

There is no polluted river stretch or waste water producing industry in the district. However time to time surprise checking would be done to ensure that no untreated water from any industry is released in the water bodies.

Present Scenario in the district:

Total Quantity of sewage and industrial discharge in District is 60MT/Day. At the same time ground water availability is not adequate in the district as per current measurement and estimation.

2.0 Water Quality Management Plan						
S No.	Action Areas	Details of Data Requirement	Measurable Outcome	Please enter Measurable Outcome for District	Municipal council Sawai madhopur	Municipal council Gangapur City
WQ1	Inventory of water resources in District					
WQ1a		Rivers	[Nos] and [Length in Km]	0	0	0
WQ1b		Length of Coastline	[in Km]	0	0	0
WQ1c		Nalas/Drains meeting Rivers	[Nos]	0	0	0
WQ1d		Lakes / Ponds	[Nos] and [Area in Hectares]	1 pond in Municipal council gangapur city	0	Pond-1
WQ1e		Total Quantity of sewage and industrial discharge in District	[Automatic] (SW1a+IW1b)	60 MT/Day	0	60 MT/Day
WQ2	Control of Groundwater Water Quality					
WQ2a		Estimated number of bore-wells	[Nos]	0	0	0

WQ2b		No of permissions given for extraction of groundwater	[Nos]	0	0	0
WQ2c		Number of groundwater polluted areas	[Nos]	0	0	0
WQ2d		Groundwater Availability	[adequate] / [not adequate]	not adequate	not adequate	Not adequate
WQ3	Availability of Water Quality Data					
WQ3a		Creation of monitoring cell	[Yes] / [No]	Yes	Yes	Yes
WQ3b		Access to Surface water and groundwater quality data at DM office	[Available] or [Not available]	available	available	available
WQ4	Control of River side Activities					
WQ4a	Control of River side Activities	River Side open defecation	[Fully Controlled] / [Partly controlled] / [no Measures taken]	Fully controlled	Fully controlled	Fully controlled
WQ4b		Dumping of SW on river banks	[Fully Controlled] / [Partly controlled] / [no Measures taken]	Measures taken	Measures taken	Measures taken
WQ4c		Control measures for idol immersion	[Measures taken] / [Measures taken post immersion] / [No Measures taken]	no Measures taken	no Measures taken	no Measures taken
WQ5	Control of Water Pollution in Rivers					
WQ5a		Percentage of untreated sewage	[%] (automatic SM1g/SM1a)	automatic SM1g/SM1aMunicipal council gangapur city	0	automatic SM1g/SM1a
WQ5b		Monitoring of Action Plans for Rejuvenation of Rivers	[Monitored] / [Not monitored] [not applicable]	not applicable	not applicable	not applicable
WQ5c		No of directions given to industries for Discharge of Untreated industrial wastewater in last 12 months	[Nos]	0	0	0
WQ6	Awareness Activities					

WQ6a		District level campaigns on protection of water quality	[Nos in previous year]	0	0	0
WQ6b	Oil Spill Disaster Contingency Plan					
WQ6a		Creation of District Oil Spill Crisis Management Group	[Created] / [Not Created]	Not Created	Not Created	Not Created
WQ6b		Preparation District Oil Spill Disaster Contingency Plan	[Prepared] / [Not Prepared]	Not Prepared	Not Prepared	Not Prepared
WQ7	Protection of Flood plains					
WQ7a		Encroachment of flood plains is regulated.	[Yes] / [No]	No	No	No
WQ8	Rainwater Harvesting					
WQ8a		Action plan for Rain water harvesting	[Implemented] / [Not implemented]	Not implemented	Not implemented	Not implemented

Water Quality Management Plan for the district is as follows:

Sl.No.	Action Points	Strategy and approach	Stake holders responsible
1	Inventory of water resources in District	Inventory of water resources in District covering Rivers and other natural water bodies, Nalas/ Drains meeting Rivers Lakes / Ponds, etc which is to be completed within Nov,2019 Total Quantity of sewage and industrial discharge are also to be assessed	CEO Zilla Parishad DFO ULBs
2	Collection of Water Quality Data	A monitoring cell with representatives from PHE, WR, UWS etc will be constituted. The cell will update action will be taken accordingly.	EE PHE,
3	Control of Groundwater Water Quality	EE PHE, ULBs	
4	Control of River side Activities	River side activities like River Side open defecation, Dumping of SW on river banks, Idol immersion etc. to be controlled	Dist. Admin EE PHE, BDOs EO of ULBs
5	Awareness Activities	District level campaigns on protection of water quality and Control of Water Pollution in Rivers	EE PHE BDOs
6	Protection of Flood plains	Encroachment of flood plains to be regulated.	Dist. Admin Circle Officers,
7	Rainwater Harvesting	A separate Action plan for Rain water harvesting in line with Govt policy would be prepared.	
8	Repair and treatment of water bodies/Talav	214 water bodies have been identified so far for restoration/ repair/and treatment work	Dist. Admin BDOs Forest Deptt ULB officials CEO zila Parishad Land and water resource deptt

Efforts for polluted river stretches and damage to adjoining agriculture field and human population

Chambal River, Morel River, Dheel River, Jeewad River are important rivers flowing in the district. Due to not having an industrial factory in Sawai Madhopur district, industrial waste does not flow in these rivers of the district, hence the pollution in the rivers has not been found here. Similarly, Malaviya National Institute of Technology, Jaipur also investigated the level of pollution in the past, according to their report no pollution has been found simultaneously no damage to agricultural land and human population has been found.

Chapter 3

Domestic Sewage Management Plan:

Present Scenario in the district:

3.0 Domestic Sewage Management Plan						
No.	Action Areas	Details of Data Requirement	Measurable Outcome	Please enter Measurable Outcome for District	Municipal council Sawai madhopur	Municipal council Gangapur City
SM1	Inventory of Sewage Management					
SM1a		Total Quantity of Sewage generated in District from Class II cities and above	[MLD]	3	3	0
SM1b		No of Class-II towns and above	[Nos]	0	0	0
SM1c		No of Class-I towns and above	[Nos]	0	0	0
SM1d		No of Towns needing STPs	[Nos]	0	0	0
SM1e		No of Towns STPs installed	[Nos]	2	1	1
SM1f		Quantity of treated sewage flowing into Rivers (directly or indirectly)	[MLD]	0 MID	0 MID	0
SM1g		Quantity of untreated or partially treated sewage (directly or indirectly)	[Automatic]	Automatic	0	Automatic
SM1h		Quantity of sewage flowing into lakes	[MLD]	0 MLD	0 MLD	0 MLD

SM1i		No of industrial townships	[Nos]	0	0	0
SW2	Adequacy of Available Infrastructure for Sewage Treatment					
SM2a		% sewage treated in STPs	[Automatic]	100% in sawai madhopur and 0% gangapur city	100%	0%
SM2b		Total available Treatment Capacity	[MLD]	55 MLD	10 MLD	44 MLD
SM2c		Additional treatment capacity required	[MLD]	0 MLD	0 MLD	0 MLD
SM3	Adequacy of Sewerage Network					
SM3a		No of ULBs having partial underground sewerage network	[Nos]	2	1	1
SM3b		No of towns not having sewerage network	[Nos]	0%	0%	0
SM3c		% population covered under sewerage network	[Automatic]	70% in sawai madhopur and 60% gangapur city	70%	60%

Domestic Sewage Management Plan for the district is as follows:

Sl.No.	Action Points	Strategy and approach	Stake holders responsible
1	Inventory of Sewage Management	Survey and identification all Households to ensure proper drainage and management of sewage.	ULB
2	Adequacy of Available Infrastructure for Sewage Treatment	<p>1. Some Household may have its own Sewage management infrastructure so as to pull down this water to maintain water level in earth and to reuse this water at various other domestic works after removing contaminants. i.e. Grey water after removing contaminants may be used in gardens, toilet flushing etc.</p> <p>2. All households should be connected to sewage management infrastructure either at home or through proper drain across ULB to Sewage treatment Plant.</p>	Beneficiary, ULB
3	Adequacy of Sewerage Network	Proper drains constructed with proper technique connecting with all Households under ULB to ensure total sewage management.	ULB
4	Inventory of Sewage Management	Survey and identification all Households to ensure proper drainage and management of sewage.	ULB
5	Adequacy of Available Infrastructure for Sewage Treatment	<p>1. Some Household may have its own Sewage management infrastructure so as to pull down this water to maintain water level in earth and to reuse this water at various other domestic works after removing contaminants. i.e., grey water after removing contaminants may be used in gardens, toilet flushing etc.</p> <p>2. All households should be connected to sewage management infrastructure either at home or through proper drain across ULB to Sewage treatment Plant.</p>	Beneficiary, ULB

Chapter 4

Industrial Waste Water Management Plan

Present Scenario in the district

4.0 Industrial Wastewater Management Plan						
No.	Action Areas	Details of Data Requirement	Measurable Outcome	Please enter Measurable Outcome for District	Municipal council Sawai madhopur	Municipal council Gangapur City
IWW1	Inventory of industrial waste water Generation in District					
IWW1a		No of Industries discharging wastewater	[Nos]	0	0	0
IWW1b		Total Quantity of industrial wastewater generated	[MLD]	0 MLD	0 MLD	0 MLD
IWW1c		Quantity of treated IWW discharged into Nalas / Rivers	[MLD]	0 MLD	0 MLD	0 MLD
IWW1d		Quantity of un-treated or partially treated IWW discharged into lakes	[MLD]	0 MLD	0 MLD	0 MLD
IWW1e		Prominent Type of Industries	[Agro based] / [Chemical – Dye etc.] / [Metallurgical] / [Pharma] / [Pesticide] / [Power Plants] / [Mining] / [Automobile] : Multiple selection	Automobile: Multiple selection based on size of operation and number in sawai madhopur and Agro based] / [Chemical – Dye etc.] / [Metallurgical] /	Automobile: Multiple selection based on size of operation and number	[Agro based] / [Chemical – Dye etc.] / [Metallurgical] / [Pharma] / [Pesticide] / [Power Plants] / [Mining] / [Automobile] : Multiple selection

			based on size of operation and number	[Pharma] / [Pesticide] / [Power Plants] / [Mining] / [Automobile] : Multiple selection based on size of operation and number in gangapur city		based on size of operation and number
IWW1f		Common Effluent Treatment Facilities	[Nos] / [No CETPs]	No CETPs	No CETPs	0
IWW2	Status of compliance by Industries in treating wastewater					
IWW2a		No of Industries meeting Standards	[Nos]	0	0	0
IWW2b		No of Industries not meeting discharge Standards	[Automatic]	Automatic	Automatic	Automatic
IWW2c		No of complaints received or number of recurring complaints against industrial pollution in last 3 months	[Nos]	0	0	0
AWW4	Status of Action taken for not meeting discharge standards					
IWW4a		No industries closed for exceeding standards in last 3 months	[Nos]	0	0	0
IWW4b		No of industries where Environmental Compensation was imposed By SPCBs	[Nos]	0	0	0

Details of Industries falling in Different Categories

No of registered industrial units in the district	Unit of red category industries	Unit of Orange category industries	Unit of Green category industries
3043	0	22	3021

Industrial Wastewater Management Plan for the district is as follows:

All the industries producing chemically and physically polluted water will be identified and located. The sensitive water bodies will be identified and efforts will be started to preserve aquatic environment. Mass awareness and participation of stakeholders will be assured for better management and utilization of industrial waste water in the district.

Chapter 5

Air Quality Management Plan

Present status of the district

5.0 Air Quality Management Plan						
No.	Action Areas	Details of Data Requirement	Measurable Outcome	Please enter Measurable Outcome for District	Municipal council Sawai madhopur	Municipal council Gangapur City
AQ1a	AQ1-Availability of Air Quality Monitoring Network in District	Manual Air Quality monitoring stations of SPCBs /CPCB	[Nos] / [None]	None	None	0
AQ1c		Automatic monitoring stations Operated by SPCBs / CPCB	[Nos] / [None]	None	None	0
AQ2a	AQ2-Inventory of Air Pollution Sources	Identification of prominent air polluting sources	[Large Industry] / [Small Industry] / [Unpaved Roads] / [Burning of Waste Stubble] / [Brick Kiln] / [Industrial Estate] / [Others] (Multiple selection)	Nil	Nil	-
AQ2b		No of Non-Attainment Cities	[Nos] / [None]	None	None	0
AQ2c		Action Plans for non-attainment cities	[Prepared] / [Not yet prepared]	Not yet prepared	Not yet prepared	Not yet prepared

AQ3a	AQ3-Availability of Air Quality Monitoring Data at DMs Office	Access to air quality data from SPCBs & CPCB through Dashboard	[Available] / [Not yet Available]	Not yet Available	Not yet Available	Not yet Available
AQ4a	AQ4-Control of Industrial Air Pollution	No of Industries meeting Standards	[Nos]	0	0	0
AQ4b		No of Industries not meeting discharge Standards	[Nos]	0	0	0
AQ5a	AQ5-Control of Non-industrial Air Pollution sources	Control open burning of Stubble –during winter	[Nos of fire incidents]	0	0	0
AQ5b		Control Open burning of Waste – Nos of actions Taken	[Nos]	0	0	0
AQ5c		Control of forest fires	[SOP available] / [No SoP]	No SoP	No SoP	No SoP
AQ5d		Vehicle pollution check centers	[% ULBs covered]	0	0	0
AQ5e		Dust Suppression Vehicles	[% ULBs covered]	0	0	0
AQ6a	AQ6-Development of Air Pollution complaint redressal system	Mobile App / Online based air pollution complaint redressing system of SPCBs.	[Available] / [Not available]	Not available	Not available	Not available

Air Quality Management Plan for the district is as follows:

Main Sources of Air pollution in the district are Industrial (Brick Industry/crusher), Vehicular traffic, and Domestic cooking (Rural areas). This plan aims to reduce the sources and amount of pollutants responsible for reducing the ambient air quality.

Sl. No	Point of Action	Strategy and approach	Stake holders responsible
1	Air Quality Monitoring and Collection off data	<ul style="list-style-type: none"> To be monitored in association with PCB. PCB will be requested to set up facility in Sawai madhopur district to monitor Air Quality 	PCB
2	Inventory of Air Pollution Sources	Inventory of potential Air Polluting Sources will be made for better monitoring.	GM, DI&CC, Sawai madhopur PCB
3	Monitoring of polluting vehicle	<ul style="list-style-type: none"> Stress will be given for setting up more Auto Emission Testing Centres in the district in addition to the existing centres. DTO will ensure that all Auto Emission Testing Centres functions as per Govt norms. 	DTO GM DI&CC
4	Monitoring of compliance by Industries/Brick kilns	They will monitor for violation and submit report to PCB, DC	GM, DI&CC, Sawai madhopur PCB
5	Creation of Awareness	Public awareness to be created through IEC campaign with participation of SHGs, NGOs, students.	Dist Administration/ NGOs DIPRO
6	Promotion of Clean fuel/new tech. chulhas	BDOs NGOs	

Chapter 6

Mining Activity Management Plan

6.0 Mining Activity Management plan						
No.	Action Areas	Details of Data Requirement	Measurable Outcome	Please enter Measurable Outcome for District	Municipal council Sawai madhopur	Municipal council Gangapur City
MI1a	Inventory of Mining in District					
MI1a		Type of Mining Activity	[Sand Mining] / [Iron Ore] / [Bauxite] / [Coal] / Other [specify] Multiple selection in order of magnitude of operations	Sand, Masonry stone, China Clay, white clay & Quartz	0	0
MI1b		No of Mining licenses given in the District	[Nos]	Masonry stone- 124, china clay, white clay-5 & Quartz- 7 136	0	0
MI1c		Area covered under mining	[Sq Km]	6.983 km ²	0	0
MI1d		Area of District	[Sq Km]	4.498 km ²	0	0
MI1e		Sand Mining	[Yes] / [No]	No	No	No
MI1f		Area of sand Mining	[River bed] / [Estuary] / [Non -river deposit]	-	Non -river deposit	Non -river deposit

MI2	Compliance to Environmental Conditions			Esr, Csr Compliance	0	0
MI2a		No of Mining areas meeting Environmental Clearance Conditions	[Nos]	129 Environmental Clearance grant	0	0
MI2b		No of Mining areas meeting Consent Conditions of SPCBs / PCCs	[Nos]	82	0	0
MI3a	Mining related environmental Complaints			0	0	–
MI3b		No of pollution related complaints against Mining Operations in last 1 year	[Nos]	0	0	0
MI4	Action against non-complying mining activity			0	0	0
MI4a		No of Mining operations suspended for violations to environmental norms	[Nos]	0	0	0
MI4b		No of directions issued by SPCBs	[Nos]	0	0	0

Mining Activity Management plan for the district is as follows

Sl. No.	Action Points	Strategy and approach	Stake holders responsible
1	Preventing illegal mining	<p>Identification of river stretches where there are chances for illegal sand mining and Frequent surprise checks in those river stretches by Circle Level Committees.</p> <p>Circle level Committee to be headed by the Circle officer and will comprise among others officials from Forest Dept., BDO. etc</p>	<p>Circle Officer DFO BDOs</p>
2	Monitoring	<p>Checking for Violation of approved mining plan/environmental norms by the DFO will notify a Phone number to receive mining related complain will give wide publicity of the number.</p>	<p>PCB, Raj DFO</p>

Chapter 7

Noise Pollution Management Plan

Noise can be defined as unwanted or undesired sound and Noise pollution simply means when there is a lot of noise in the environment which is consequentially harming the environment. Like smoking, noise pollution affects active and passive recipients when noise levels cross certain safe boundaries. Noise pollution affects both human health and behavior. Noise pollution also impacts the health and well-being of wildlife. Most activities that cause pollution are essential to meet the needs of the growing population and development. Therefore, preventive measures to minimize pollutants are more practical than their elimination.

Present status

7.0 Noise Pollution Management Plan						
No.	Action Areas	Details of Data Requirement	Measurable Outcome	Please enter Measurable Outcome for District	Municipal council Sawai madhopur	Municipal council Gangapur City
NP1a	NP1-Availability Monitoring equipment	No. of noise measuring devices with district administration	[Nos] / [None]	None	None	None
NP1b		No. of noise measuring devices with SPCBs	[Nos] / [None]		None	None
NP2a	NP2-Capability to conduct noise level monitoring by State agency / District authorities	capability to conduct noise level monitoring by State agency / District authorities	[Available] / [Not available]	Not available	Not availavle	Not available

NP3a	Management of Noise related complaints	No of complaints received on noise pollution in last 1 year	[Nos]	501	327	174
NP3b		No of complaints redressed	[Nos]	Never	Never	Never
NP4a		Compliance to ambient noise standards	Implementation of Ambient noise standards in residential and silent zones	[Regular Activity] / [Occasional] / [Never]	Never	Never
NP4b	Noise monitoring study in district		[carried out] / [not carried out]	Not Carried Out	Not Carried Out	Not Carried Out
NP4c	Sign boards in towns and cities in silent zones		[Installed] / [Partial] / [Not Installed]	Not Installed	Not Installed	Not Installed

Noise Pollution Management plan for the district is as follows

Sl. No.	Action Points	Strategy and approach	Stake holders responsible
1	Noise level Monitoring	<ul style="list-style-type: none"> • PCB or its authorized Agency will conduct Noise level Monitoring. • Monitoring equipment/ noise measuring devices will be procured. 	PCB
2	Categorization of areas	<ul style="list-style-type: none"> • Categorization of areas into industrial, commercial residential or silence areas/zones will be completed soon. • Sign boards will be installed in Silent zones. 	PCB All EO of ULBs
3	Restriction on use of loud speakers/ PA system etc and monitoring	<ul style="list-style-type: none"> • Loud speaker or a public address system will not allow to be used without obtaining written permission from the authority. • A loud speaker or a public address system will not allow to be used at night (between 10.00 p.m. to 6.00 a.m.) • Special team for monitoring during festivals. 	District Administration
4	Monitoring of polluting vehicle	DTO will take steps for monitoring/ checking of vehicles to ensure environmental norms are followed by the vehicles.	DTO
5	Creation of Awareness	Steps will be taken to make	Dist Administration/ NGOs

Chapter 8

Conservation of Water bodies

Water bodies play an important role in maintaining and restoring the ecological balance. They act as sources of drinking water, recharge groundwater, control floods, support biodiversity, and provide livelihood opportunities to a large number of people. Realising the seriousness of the problem confronting waterbodies, the district administration launched the 'Repair, Renovation and Restoration of Water Bodies' in the district in both urban as well as rural areas. District administration is working continuously for conservation of water bodies. The detail of water bodies mentioning type, area, Agency having title of water body (as per revenue record), condition of water body and tentative expenditure to restoration, green cover and catchment area treatment has been compiled by the district administration. It is worthy to mention here that out of a total of 545 water bodies majority of them are in good condition. Though some the water bodies require construction and restoration. Highest number of water bodies is under forest department followed by Gram Panchayat and watershed department.

In order to achieve the goal of revival of waterbodies, it is important to understand that one solution may not fit all the waterbodies. Depending on the purpose, ecological services, livelihood and socio-cultural practices, the approach will vary from one waterbody to another.

Chapter 9

Prevention of Illegal sand mining

The district is part of three river basins viz. 'Banas River Basin', 'Chambal River Basin' and 'Gambhir River Basin'. Of these, the Banas River basin is most prominent and drains significantly large part of the district in central and northern parts whereas the Chambal River drains in southern part of the district. The Gambhir river basin occupies small area in the northeastern corner. To prevent illegal mining of Bajri district administration is taking strict actions and penalties. Action taken with respect to prevention of illegal mining and number of registered cases are given below.

Time	No of registerd Cases	Amount of colleted Penalty in Rs	No of Registerd FIR	Registerd Istagasha	Seized Vehicles
16.11.2017 to 31.03.2018	352	16085570	0	0	352
2018-19	1069	38275985	05	0	1063
2019-20	602	38593755	20	0	601
2020-21 Till 31.10.2020	394	6	6	0	394

Vehicles, machinery and equipment used in the mining are being seized and the amount of penalties is collected as given below:

S.No.	Vehicle/Equipment	Compound fee (in Rs.) per unit
1.	Tractor trolley	Twenty-five thousand
2.	Truck/Dumper/any other vehicles gross vehicle weight up to sixteen tonnes (as per registration certificate of the vehicles) and	Fifty thousand
3.	Truck/Dumper/any other vehicles gross vehicle weight more than sixteen tonnes (as per registration certificate of the vehicles) and Wire saw, crane, excavator, loader, power hammer, compressor, drilling machine etc.	One lac

Chapter 10

Environmental Threats

The river water is not significantly polluted in the district simultaneously no damage to agricultural land and human population has been found. None of the industry in the districts falls in red category industry therefore, the district observed no industrial waste threat. Air quality monitoring data are not available at DMs Office at the same time district administration does not have any device to conduct noise level monitoring by District authorities. No noise monitoring study has been carried out in the district so far. There is an urgent need to develop good infrastructure for monitoring of air and noise pollution in the district.

There are some environment threats due to tourism industry for Ranthambore Tiger Reserve. Some most significant desirable steps have been identified to cope up with these environment threats-

- There is an abundance of resorts and hotels on Ranthambore Road located at Sawai Madhopur District Headquarters. Private tourist vehicles create noise pollution (vehicle horns etc.) at the same time due to heavy rush of vehicles the public is prone to road accidents. To control the number of vehicles on Ranthambore Road heavy / cargo vehicles can be allowed only for a limited period daily on Ranthambore Road beyond Hammir Circle.
- Pollution index board can be installed on Ranthambore Road.
- Most of the resorts on Ranthambore Road are used for wedding ceremony. In such a ceremony, noise pollution from the loudspeakers causes adverse effects on wildlife behavior. The environment can be made more secure by formulating **Standard Operating Procedure (SOP)** for these commercial enterprises to control sound and light pollution.
- The entry of heavy vehicles can be controlled during the period of traffic of authorized tourist vehicles of Ranthambore National Park.
- All commercial establishments located on the border of Ranthambore National Park can be strictly directed for scientific disposal of solid waste by providing them SOP.
- The water used by the above commercial establishments can only be treated rigorously for disposal after treatment so that the ground water is not polluted.

- In Trinetra Ganesh ji temple, compliance can be ensured by imposing strict restrictions on polythene usage.
- In this temple too, instead of taking private vehicles up the steps of the temple, be sure to park them to Saras Dairy or by making other options.

Chapter 11

Soil and Agriculture Land

Sawai Madhopur district falls under 3B (Flood Prone Eastern Plain) agro-climatic zone of Rajasthan. Most of the district is flat and there is a ravine area in the south-west. Humidity is more than 54 to 55 percent during the south-west monsoon, the annual average rainfall ranges from 500 to 650 mm. The production capacity of any area depends on the fertility level of the soil and the quality of water available for irrigation and climate etc. Use of balanced amount of fertilizers to maintain production capacity and to receive more production complete information regarding the problems of soil and water is required. For the complete information of soil and water quality, soil testing and irrigation water testing are done in the laboratories in the district. The work of soil testing in the district is being carried out by three soil laboratories functioning in the district. Currently, this work is being done in the laboratories working at the district level at the Krishi Vigyan Kendra, Karmoda.

As per fertile level survey of soil it has been noticed that Sandy loam, loam, clay loam and loamy sand are main soil types found in different areas of Sawai Madhopur district. Many villages of the district suffer from the problem of salinity and alkalinity. Saline Soils are those soils that contain sufficient salinity to give electrical conductivity (EC) Values greater than 3 mmohs/cm but have an ESP less than 15 (or an SAR less than 13) in the saturation extract. Thus, exchange complex of saline soils is dominated by calcium and magnesium, not sodium. The pH of saline soils is usually below 8.5. Excess of salts in saline land is the biggest problem. The development of saline land in the district is due to the water used in irrigation. Scraping, Flushing, Leaching and use of compost manure, green manure, etc. are the methods to control salinity.

The pH of alkaline soils is usually above 8.5 and electrical conductivity (EC) Values less than 3 mmohs/cm. In alkaline soil, the soil structure deteriorates, the water absorption capacity decreases. For treatment of alkaline soils deep plough, leveling the field is important. Use of gypsum is also helpful to reduce soil alkalinity. In such soils fertilizers of acidic nature should be used like ammonium sulfate, calcium and ammonium nitrate.

Problem of saline and alkaline water

The quantity of pH, Electrical Conductivity, Calcium, Magnesium, carbonate, Bi-carbonate and Chloride etc. was tested in the local laboratory of water samples from the wells and tube wells at the time of land fertility survey. It was found that water in many areas in the district

has been found to be salty and alkaline. In case of saline water, for the suggestion, light irrigation should be done at short intervals, use saline water in equal proportion of normal water for irrigation, use green manure and cow dung fertilizer and use 20 per cent more seeds. In case of saline alkaline water problem, the water should be passed through gypsum tank / bed at the time of each irrigation along with the above measures.

Annexure-1 Details of BMW management and Training of Staff, Sawai Madhopur														
Sl No-	Name of Institute	Type of Institute	Period of Authentication from Pollution Control Board (to and From)	if the application is pending in the PCB the date of application and the reason for the pending and duration of pendency	if the authorization application is not submitted then reason	Inventory	BMW disposal CTF / Deep Burial Pit / Others	The weight of the BMW generated in 2019-20	Service provider who disposes the waste.	What period of time the garbage collection is done by the service provider (Give details per day / two days a week / or any other period)	BMW Training			
											Total doctor	Trained doctor	total paramedical staff	trained Staff
1	2	3	4	5	6	7	8	9	10	11	12	13	14	15
1	Bamanwas	CHC	30-05-16 to 30-06-21	NA	NA	Yes	CTF	687.248	Hoswin Incinaretor, Alwar	2 Days in a Week	3	3	11	8
2	Barnala	CHC	14-04-19 to 31-03-24	NA	NA	Yes	CTF	953.201	Hoswin Incinaretor, Alwar	2 Days in a Week	1	1	7	3
3	Batoda	PHC	21-4-19 to 31-03-24	NA	NA	Yes	CTF	379.837	Hoswin Incinaretor, Alwar	Once in a week	1	1	5	3
4	Gujar Baroda	PHC	14-04-19 to 31-03-24	NA	NA	Yes	CTF	210.651	Hoswin Incinaretor, Alwar	2 Days in a Week	1	0	5	3
5	Jahira	PHC	14-04-19 to 31-03-24	NA	NA	Yes	CTF	264.315	Hoswin Incinaretor, Alwar	Daily	1	1	4	3
6	Liwali	PHC	14-04-19 to 31-03-24	NA	NA	Yes	CTF	367.259	Hoswin Incinaretor, Alwar	Once in a week	1	1	5	3
7	Meena Koleta	PHC	14-04-19 to 31-03-24	NA	NA	Yes	CTF	434.294	Hoswin Incinaretor, Alwar	2 Days in a Week	1	1	4	4
8	Naroli Chour	PHC	14-04-19 to 31-03-24	NA	NA	Yes	CTF	627.297	Hoswin Incinaretor, Alwar	2 Days in a Week	1	1	5	5
9	Pipalai	PHC	14-04-19 to 31-03-24	NA	NA	Yes	CTF	753.159	Hoswin Incinaretor, Alwar	2 Days in a Week	1	1	6	5
10	Shaifipura	PHC	14-04-19 to 31-03-24	NA	NA	Yes	CTF	837.294	Hoswin Incinaretor, Alwar	Daily	1	1	3	2
11	Sukar	PHC	14-04-19 to 31-03-24	NA	NA	Yes	CTF	873.275	Hoswin Incinaretor, Alwar	2 Days in a Week	1	0	4	3

12	Bonli	CHC	28-02-16 to 31-03-21	NA	NA	Yes	CTF	1067.38	Hoswin Incinaretor, Alwar	2 Days in a Week	4	3	13	10
13	Malarna Dungar	CHC	30-08-16 to 30-09-21	NA	NA	Yes	CTF	1043.25	Hoswin Incinaretor, Alwar	2 Days in a Week	3	1	11	10
14	Mitrapura	CHC	30-08-16 to 30-09-21	NA	NA	Yes	CTF	952.157	Hoswin Incinaretor, Alwar	2 Days in a Week	2	2	7	6
15	Bapui	PHC	Not applied	Not applied	New PHC	Yes	NA	NA	NA	NA	1	0	1	1
16	Bhadoti	PHC	30-08-16 to 30-09-21	NA	NA	Yes	CTF	654.231	Hoswin Incinaretor, Alwar	2 Days in a Week	1	1	9	9
17	Khirni	PHC	30-08-16 to 30-09-21	NA	NA	Yes	CTF	456.147	Hoswin Incinaretor, Alwar	2 Days in a Week	2	1	8	8
18	Maksudanpura	PHC	30-04-19 to 31-05-24	NA	NA	Yes	CTF	352.478	Hoswin Incinaretor, Alwar	2 Days in a Week	1	1	4	3
19	Malana Choor	PHC	30-08-16 to 30-09-21	NA	NA	Yes	CTF	738.438	Hoswin Incinaretor, Alwar	2 Days in a Week	0	0	4	2
20	Malarna Station	PHC	30-11-16 to 31-12-21	NA	NA	Yes	CTF	462.14	Hoswin Incinaretor, Alwar	2 Days in a Week	1	1	3	3
21	Peepalda	PHC	30-10-17 to 30-11-22	NA	NA	Yes	CTF	673.297	Hoswin Incinaretor, Alwar	2 Days in a Week	1	1	5	4
22	Sesa	PHC	30-07-17 to 31-08-22	NA	NA	Yes	CTF	834.297	Hoswin Incinaretor, Alwar	Once in a week	1	0	3	2
23	Khandeep	CHC	30-09-16 to 31-10-21	NA	NA	Yes	CTF	853.23	Hoswin Incinaretor, Alwar	2 Days in a Week	3	3	18	18
24	Piloda	CHC	30-09-16 to 31-10-21	NA	NA	Yes	CTF	765.834	Hoswin Incinaretor, Alwar	2 Days in a Week	4	4	21	21
25	Vajeerpur	CHC	30-05-16 to 30-06-21	NA	NA	Yes	CTF	834.652	Hoswin Incinaretor, Alwar	2 Days in a Week	3	3	17	17
26	AmarGard Choki	PHC	30-04-19 to 31-05-24	NA	NA	Yes	CTF	365.236	Hoswin Incinaretor, Alwar	2 Days in a Week	1	1	5	5
27	Baman Baroda	PHC	30-04-19 to 31-05-24	NA	NA	Yes	CTF	321.259	Hoswin Incinaretor, Alwar		1	1	2	1
28	Meena Baroda	PHC	30-04-19 to 31-05-24	NA	NA	Yes	CTF	532.125	Hoswin Incinaretor, Alwar	2 Days in a Week	1	1	3	2
29	Meri	PHC	Not applied	Not applied	New PHC	Yes	NA		NA	NA	1	0	2	1
30	Seva	PHC	30-08-18 to 30-09-23	NA	NA	Yes	CTF	549.738	Hoswin Incinaretor, Alwar	Once in a week	1	1	3	3

31	Talawada	PHC	24-05-19 to 24-06-24	NA	NA	Yes	CTF	235.865	Hoswin Incinerator, Alwar	2 Days in a Week	1	1	7	6
32	Udai Khurd	PHC	30-04-18 to 31-05-23	NA	NA	Yes	CTF	257.297	Hoswin Incinerator, Alwar	Once in a week	0	0	6	6
33	Bahraw dakhurd	CHC	30-08-16 to 30-09-21	NA	NA	Yes	CTF	1042.24	Hoswin Incinerator, Alwar	2 Days in a Week	3	2	12	10
34	Khandar	CHC	31-07-17 to 31-08-22	NA	NA	Yes	CTF	945.238	Hoswin Incinerator, Alwar	2 Days in a Week	6	4	22	22
35	Bahrawdakala an	PHC	30-05-16 to 30-06-21	NA	NA	Yes	CTF	539.687	Hoswin Incinerator, Alwar	2 Days in a Week	1	1	3	3
36	Baler	PHC	30-06-16 to 31-07-21	NA	NA	Yes	CTF	467	Hoswin Incinerator, Alwar	2 Days in a Week	1	1	4	4
37	Lahsoda	PHC	30-04-19 to 30-05-24	NA	NA	Yes	CTF	498.951	Hoswin Incinerator, Alwar		1	1	5	5
38	Phalodi	PHC	30-08-18 to 30-09-23	NA	NA	Yes	CTF	487	Hoswin Incinerator, Alwar	2 Days in a Week	2	2	8	8
39	Rawajna Chour	PHC		applied in 07-01-2020	NA	Yes	Deep Burial Pit	NA	NA	NA	1	1	6	6
40	Choth Ka Barwara	CHC	30-08-16 to 30-09-21	NA	NA	Yes	CTF	1234.15	Hoswin Incinerator, Alwar	2 Days in a Week	4	4	11	11
41	Kundera	CHC	30-08-16 to 30-09-21	NA	NA	Yes	CTF	1029.54	Hoswin Incinerator, Alwar	2 Days in a Week	3	2	10	8
42	Bhagwatgarh	CHC	30-11-17 to 31-12-22	NA	NA	Yes	CTF	657.231	Hoswin Incinerator, Alwar	2 Days in a Week	3	3	9	9
43	Shivard	CHC	30-08-16 to 30-09-21	NA	NA	Yes	CTF	652.147	Hoswin Incinerator, Alwar	2 Days in a Week	2	2	8	8
44	Bhoori Pahari	PHC	Not applied	Not applied	New PHC	Yes	NA	NA	NA	NA	1	1	2	2
45	Isharda	PHC	30-11-16 to 31-12-21	NA	NA	Yes	CTF	637.967	Hoswin Incinerator, Alwar	Once in a week	3	3	4	4
46	Kustala	PHC	30-11-17 to 31-12-22	NA	NA	Yes	CTF	453.534	Hoswin Incinerator, Alwar	Once in a week	1	1	7	6
47	Lorwada	PHC	30-11-17 to 31-12-22	NA	NA	Yes	CTF	637.201	Hoswin Incinerator, Alwar	Once in a week	1	1	5	5
48	Makholi	PHC	30-11-17 to 31-12-22	NA	NA	Yes	CTF	352.437	Hoswin Incinerator, Alwar	Once in a week	2	2	3	3
49	Shaympura	PHC	30-11-17 to	NA	NA	Yes	CTF	438.937	Hoswin	Once in a	1	1	3	2

			31-12-22						Incinerator, Alwar	week				
50	Shelu	PHC	30-11-17 to 31-12-22	NA	NA	Yes	CTF	379.837	Hoswin Incinerator, Alwar	Once in a week	1	1	3	2
51	Surwal	PHC	30-08-16 to 30-09-21	NA	NA	Yes	CTF	753.193	Hoswin Incinerator, Alwar	2 Days in a Week	1	1	3	3
52	Uliyana	PHC	Not applied	Not applied	New PHC	Yes	NA	NA	NA	NA	1	0	2	2
53	Gangapur City	SDH		Applied on 21-09-2019	NA	Yes	CTF	3681	Hoswin Incinerator, Alwar	Daily	36	34	97	95
54	DH,Sawai Madhopur	DH		Applied on 28-07-2020	NA	Yes	CTF	7763	Hoswin Incinerator, Alwar	Daily	72	70	306	302
55	UPHC Mantown	UPHC		Applied on 10-06-2020	NA	Yes	CTF	682.246	Hoswin Incinerator, Alwar	2 Days in a Week	1	1	5	5
56	UPHC Bazariya	UPHC	08-07-19 to 08-06-24	NA	NA	Yes	CTF	753.159	Hoswin Incinerator, Alwar	2 Days in a Week	2	2	6	4
57	UPHC City Sawai Madhopur	UPHC	07-09-19 to 07-08-24	NA	NA	Yes	CTF		Hoswin Incinerator, Alwar	2 Days in a Week	1	0	6	5
58	UPHC Hingotiya	UPHC	30-05-19 to 30-06-24	NA	NA	Yes		839.247	Hoswin Incinerator, Alwar	2 Days in a Week	1	1	2	1
59	UPHC Udai Mod	UPHC	11-02-16 to 31-01-21	NA	NA	Yes	CTF	606	Hoswin Incinerator, Alwar	2 Days in a Week	1	0	4	1
60	TB Hospital Sawai Madhopur	TB Hospital	30-05-19 to 30-06-24	NA	NA	Yes	CTF	638.342	Hoswin Incinerator, Alwar	2 Days in a Week	1	1	7	6
											200	180	774	722

Annexure 2: List of villages identified for Annual Implementation Plan (2020-21) under Solid and Liquid Resource Management (SLRM)



कार्यालय जिला स्वच्छ भारत मिशन (ग्रा0), सवाई माधोपुर

क्रमांक / एस.बी.एम (ग्रा0) / स0मा0 / 2020-21 /

दिनांक .

श्रीमान निदेशक महोदय,
निदेशालय, स्वच्छ भारत मिशन (ग्रा0)
जयपुर।

विषय:- "स्टड गतिविधियों हेतु आवंटित। ष 2020.21 में सम्मिलित किये जाने वाले ग्रामों एवं प्लास्टिक वेस्ट मैनेजमेंट स्थापित किये जाने वाली पंचायत समिति को चिन्हित किया जाकर उनके नामों की ग्रामवार/ग्राम पंचायतवार/ब्लॉकवार सूची भिजवाये जाने बाबत।

प्रसंग:- आपके पत्रांक / 2526-30, दिनांक 20.11.2020

विषयान्तर्गत प्रासंगिक पत्र के क्रम में लेख है कि स्वच्छ भारत मिशन (ग्रा0) योजना के अन्तर्गत जिलों की अनुमोदित। ष 2020.21 के अनुसार वर्ष 2020-21 हेतु जिलों के 151 ग्रामों को "स्टड गतिविधियों के माध्यम से वृ ग्रामों के रूप में विकसित किये जाने हेतु लक्ष्य आवंटित है। जिसमें 5000 तक की जनसंख्या के 146 ग्राम, 5000 से अधिक जनसंख्या के 5 ग्राम के "स्टड एवं प्लास्टिक वेस्ट मैनेजमेंट स्थापित किये जाने हेतु 2 पंचायत समितियाँ शामिल है।

निर्देशानुसार "स्टड गतिविधियों हेतु आवंटित। ष 2020.21 में सम्मिलित किये जाने वाले ग्रामों एवं प्लास्टिक वेस्ट मैनेजमेंट स्थापित किये जाने वाली पंचायत समितियों को चिन्हित कर उनके नामों की ब्लॉकवार सूची चाही गई थी, जो पंचायत समितियों से प्राप्त सूचना के आधार पर निर्धारित प्रपत्र में संलग्न है।

संलग्न:- उपरोक्तानुसार।

मुख्य कार्यकारी अधिकारी एवं सदस्य सचिव
जिला स्वच्छ भारत मिशन (ग्रा0), सवाई माधोपुर

मांक: / एस.बी.एम (ग्रा0) / स0मा0 / 2020-21 /
प्रतिलिपी निम्न को सूचनार्थ एवं अग्रिम कार्यवाही हेतु प्रेषित है:-

दिनांक

1. श्रीमान जिला कलेक्टर महोदय, सवाई माधोपुर।
2. अतिरिक्त मुख्य कार्यकारी अधिकारी, जिला परिषद सवाई माधोपुर।
3. विकास अधिकारी, पंचायत समिति समस्त।

मुख्य कार्यकारी अधिकारी एवं सदस्य सचिव
जिला स्वच्छ भारत मिशन (ग्रा0), सवाई माधोपुर

स्वच्छ गतिविधियों हेतु | जू 2020.21 में सम्मिलित 5000 से अधिक जनसंख्या वाले ग्रामों की सूची

क्र.सं.	ब्लॉक	ग्राम पंचायत	ग्राम का नाम
1	बामनवास	बाटोदा	बाटोदा
2	बौली	बौली	बौली
3	चौथ का बरवाड़ा	चौथ का बरवाड़ा	चौथ का बरवाड़ा
4	गंगापुर सिटी	चूली	चूली
5	सवाई माधोपुर	खिलचीपुर	खिलचीपुर

स्वच्छ गतिविधियों हेतु | जू 2020.21 में सम्मिलित 5000 तक की जनसंख्या वाले ग्रामों की सूची

क्र.सं.	ब्लॉक	ग्राम पंचायत	ग्राम का नाम
1	बामनवास	बिछोछ	बिछोछ
2	बामनवास	लिवाली	लिवाली
3	बामनवास	सुकार	सुकार
4	बामनवास	रानीला	बडिला
5	बामनवास	नारौली चौड	भंवरकी
6	बामनवास	बरनाला	बरनाला
7	बामनवास	विन्जारी	सुरगढ
8	बामनवास	सुन्दरी	रामसिंहपुरा
9	बामनवास	डावर	सिरसाली
10	बामनवास	सितौड	बडी झोपडी
11	बामनवास	सुमेल	पलासोद
12	बामनवास	चांदनहोली	शंकरपुरा
13	बामनवास	कोहली प्रेमपुरा	रामनगर ढोसी
14	बामनवास	पिपलाई	सितापुरा
15	बामनवास	शफीपुरा	सराय
16	बामनवास	जाहिरा	कीरतपुरा
17	बामनवास	गण्डाल	कोण्डली
18	बामनवास	गुर्जर बडौदा	शयोसिंहपुरा
19	बामनवास	जीवद	नवाडिया मीना
20	बामनवास	फुलवाडा	जाखोलास कला
21	बौली	बागडोली	बागडोली
22	बौली	बंपूर्ई	बंपूर्ई
23	बौली	बांस टोरडा	बांस टोरडा
24	बौली	बोरदा	बोरदा
25	बौली	दतूली	दतूली
26	बौली	गालद कलां	गालद कलां
27	बौली	गोतोड	गोतोड

28	बौली	हथडोली	जटावती
29	बौली	हिन्दूपुरा	हिन्दूपुरा
30	बौली	जस्ताना	जस्ताना
31	बौली	झनून	झनून
32	बौली	कोडयाई	कोडयाई
33	बौली	कोलाडा	कोलाडा
34	बौली	लाखनपुर	लाखनपुर
35	बौली	मामडोली	मामडोली
36	बौली	मित्रपुरा	मित्रपुरा
37	बौली	मोरन	मोरन
38	बौली	पीपलदा	पीपलदा
39	बौली	पीपलवाडा	पीपलवाडा
40	बौली	थडोली	थडोली
41	बौली	उदगांव	उदगांव
42	चौथ का बरवाड़ा	आदलवाडा कलां	आदलवाडा कलां
43	चौथ का बरवाड़ा	बलरिया	बलरिया
44	चौथ का बरवाड़ा	बिन्जारी	बिन्जारी
45	चौथ का बरवाड़ा	भेडोला	भेडोला
46	चौथ का बरवाड़ा	भेडोला	जगमोदा
47	चौथ का बरवाड़ा	डेकवा	डेकवा
48	चौथ का बरवाड़ा	डेकवा	बिलोपा
49	चौथ का बरवाड़ा	डिडायच	डिडायच
50	चौथ का बरवाड़ा	झौपडा	झौपडा
51	चौथ का बरवाड़ा	जौला	जौला
52	चौथ का बरवाड़ा	महापुरा	महापुरा
53	चौथ का बरवाड़ा	पांवडेरा	पांवडेरा
54	चौथ का बरवाड़ा	रजवाना	रजवाना
55	चौथ का बरवाड़ा	टापुर	टापुर
56	चौथ का बरवाड़ा	टापुर	एचेर
57	चौथ का बरवाड़ा	मुई	मुई
58	चौथ का बरवाड़ा	मुई	जुवाड
59	चौथ का बरवाड़ा	खिजूरी	खिजूरी
60	चौथ का बरवाड़ा	पांचोलास	पांचोलास
61	चौथ का बरवाड़ा	रवाजंना चौड	पीपलवाडा
62	चौथ का बरवाड़ा	रवांजना डूंगर	रवांजना डूंगर
63	गंगापुर सिटी	जीवली	जीवली
64	गंगापुर सिटी	सलेमपुर	सलेमपुर

65	गंगापुर सिटी	उमरी	उमरी
66	गंगापुर सिटी	विदरख्या	विदरख्या
67	गंगापुर सिटी	कुनकटाकलॉ	कुनकटाकलॉ
68	गंगापुर सिटी	कुनकटाकलॉ	नन्दपुरा
69	गंगापुर सिटी	बामनबडौदा	बामनबडौदा
70	गंगापुर सिटी	नौगाँव	नौगाँव
71	गंगापुर सिटी	अमरगढ	मालियो की चौकी
72	गंगापुर सिटी	बूचौलाई	बूचौलाई
73	गंगापुर सिटी	मीनापाडा	मीनापाडा
74	गंगापुर सिटी	महानन्दपुरडयोडा	महानन्दपुरडयोडा
75	गंगापुर सिटी	खानपुरबडौदा	खानपुरबडौदा
76	गंगापुर सिटी	जाटबडौदा	जाटबडौदा
77	गंगापुर सिटी	मीनाबडौदा	मीनाबडौदा
78	गंगापुर सिटी	खूटलासलौना	खूटलासलौना
79	गंगापुर सिटी	बडौली	बडौली
80	गंगापुर सिटी	मेडी	मेडी
81	गंगापुर सिटी	टोकसी	टोकसी
82	गंगापुर सिटी	छावा	छावा
83	गंगापुर सिटी	बडौली	खेडला
84	मलारना डूंगर	भाडोती	भाडोती
85	मलारना डूंगर	भूखा	भूखा
86	मलारना डूंगर	बिच्छीदौना	बिच्छीदौना
87	मलारना डूंगर	चकबिलोली	चकबिलोली
88	मलारना डूंगर	गम्भीरा	गम्भीरा
89	मलारना डूंगर	जोलन्दा	जोलन्दा
90	मलारना डूंगर	करेल	करेल
91	मलारना डूंगर	खिरनी	खिरनी
92	मलारना डूंगर	मकसूदनपुरा	मकसूदनपुरा
93	मलारना डूंगर	मलारना डूंगर	मलारना डूंगर
94	मलारना डूंगर	मलारना चौड	मलारना चौड
95	मलारना डूंगर	निमोद	निमोद
96	मलारना डूंगर	सांकडा	सांकडा
97	मलारना डूंगर	शेषा	शेषा
98	मलारना डूंगर	तारनपुर	तारनपुर
99	मलारना डूंगर	चांदनोली	चांदनोली
100	मलारना डूंगर	कुण्डली नदी	कुण्डली नदी
101	मलारना डूंगर	पीलवा नदी	पीलवा नदी

102	मलारना डूंगर	भारजा नदी	भारजा नदी
103	मलारना डूंगर	फलसावटा	फलसावटा
104	मलारना डूंगर	ऐबरा	ऐबरा
105	खण्डार	अल्लापुर	अल्लापुर
106	खण्डार	तलावडा	तलावडा
107	खण्डार	लहसोडा	लहसोडा
108	खण्डार	कोसरा	कोसरा
109	खण्डार	छाण	छाण
110	खण्डार	बहराँवण्डा कलां	बहराँवण्डा कलां
111	खण्डार	बालेर	बालेर
112	खण्डार	नायपुर	सांवटा
113	खण्डार	हलौंदा	हलौंदा
114	खण्डार	क्यारदाकलौं	क्यारदाकलौं
115	खण्डार	टोडरा	टोडरा
116	खण्डार	फलौदी	फलौदी
117	खण्डार	बिचपुरी गुजरान	बाजोली
118	खण्डार	गोठडा	गोठडा
119	खण्डार	रेडावद	रेडावद
120	खण्डार	मेईकलां	मेईकलां
121	खण्डार	दूमोदा	दूमोदा
122	खण्डार	दौलतपुरा	दौलतपुरा
123	खण्डार	कुरेडी	कुरेडी
124	खण्डार	सिंगौरकलां	सिंगौरकलां
125	खण्डार	बरनावदा	बडौद
126	सवाई माधोपुर	आटूण कलां	आटूण कलां
127	सवाई माधोपुर	अजनोटी	अजनोटी
128	सवाई माधोपुर	बाडोलास	बाडोलास
129	सवाई माधोपुर	चकेरी	चकेरी
130	सवाई माधोपुर	ऐण्डा	ऐण्डा
131	सवाई माधोपुर	गम्भीरा	गम्भीरा
132	सवाई माधोपुर	जटवाड़ा कलां	जटवाड़ा कलां
133	सवाई माधोपुर	जीनापुर	जीनापुर
134	सवाई माधोपुर	जडावता	जडावता
135	सवाई माधोपुर	करमोदा	करमोदा
136	सवाई माधोपुर	लोरवाडा	लोरवाडा
137	सवाई माधोपुर	मैनपुरा	मैनपुरा
138	सवाई माधोपुर	नींदइदा	नींदइदा

139	सवाई माधोपुर	पढाना	पढाना
140	सवाई माधोपुर	रामडी	रामडी
141	सवाई माधोपुर	सैलू	सैलू
142	सवाई माधोपुर	शेरपुर	शेरपुर
143	सवाई माधोपुर	श्यामपुरा	श्यामपुरा
144	सवाई माधोपुर	सुनारी	सुनारी
145	सवाई माधोपुर	डूंगरी	डूंगरी
146	सवाई माधोपुर	रांवल	रांवल

प्लास्टिक वेस्ट मेनेजमेंट स्थापित किये जाने वाली पंचायत समितियों की सूची

क्र.सं.	जिला	पंचायत समिति का नाम
1	सवाई माधोपुर	चौध का बरवाड़ा
2	सवाई माधोपुर	बौली