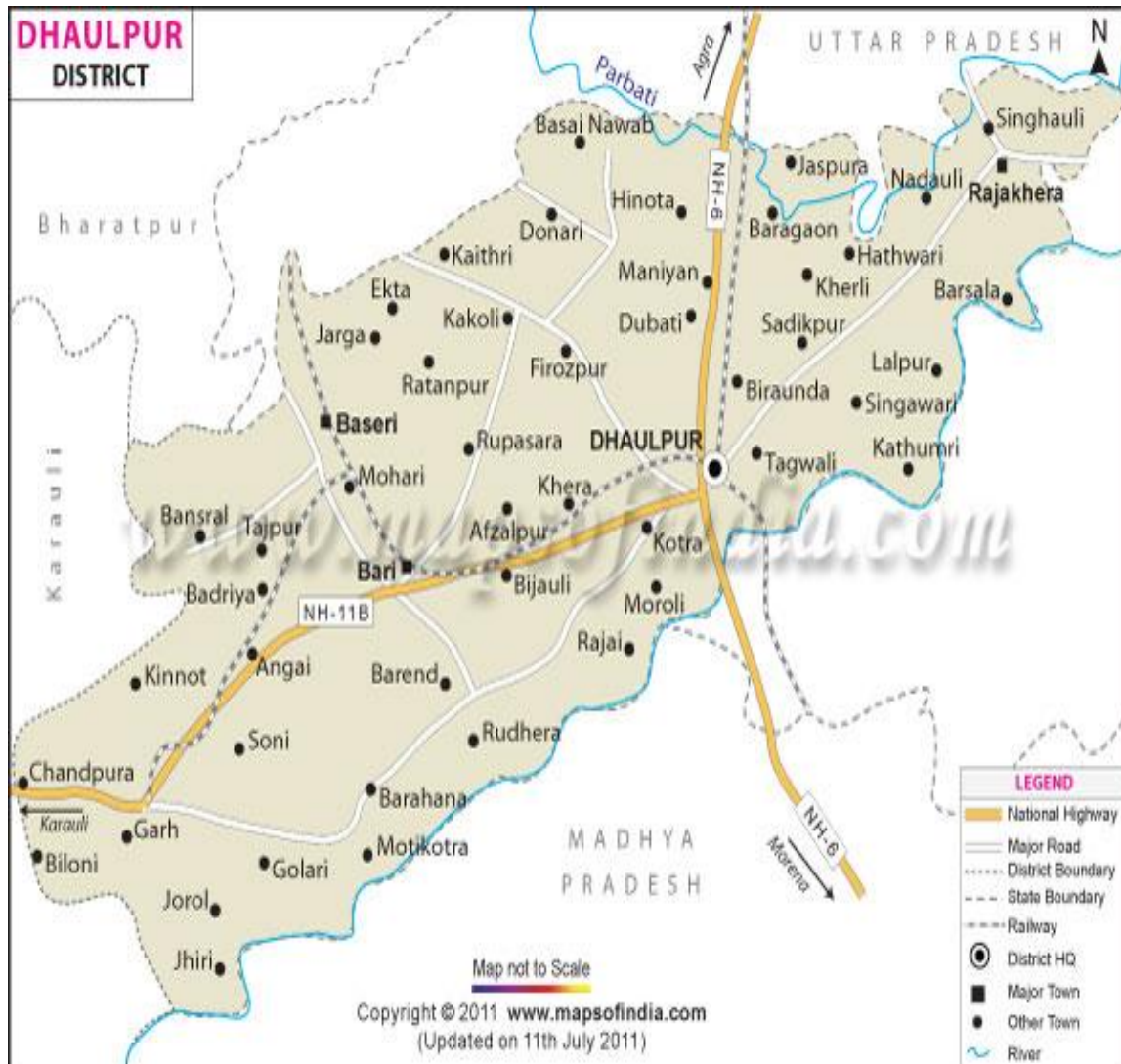


DISTRICT ENVIRONMENT PLAN

DHOLPUR



Submitted by:

District Collector, Dholpur

INDEX

Sr. No	Table of Content	Page No.
1	Introduction	3
2.	Brief Profile of the District	6
3	Chapter 1: Waste Management	
4	1.1 Solid Waste Management	14
5	1.2 Plastic Waste Management	21
6	1.3 Construction and Demolition Waste Management	26
7	1.4: Bio Medical Waste Management	30
8	1.5: Hazardous Waste Management	36
9	1.6: E Waste Management	40
10	Chapter 2: Water Quality Management Plan	44
11	Chapter 3: Domestic Sewage Management Plan	49
12	Chapter 4: Industrial Waste Management	52
13	Chapter 5: Air Quality Management Plan	55
14	Chapter 6: Mining Activity Management Plan	58
16	Chapter 7: Noise Management Plan	61
17	Chapter 8 : Prevention of illegal sand mining	65
18	Budget Requirement for protection of illegal Mining and Non-Forestry Activities	68
19	Annexure: Act & Rules	

1. INTRODUCTION

BACKGROUND OF PREPARATION OF DISTRICT ENVIRONMENT

PLAN:

Hon'ble National Green Tribunal, New Delhi has passed an order on 15-07-2019 in O.A. No. 710/2017 titled as Shailesh Singh Versus Sheela Hospital and Trauma Centre Shahjahanpur that it is necessary to have a District Environment Plan to be operated by the District Committee and further vide order dated 26-09-2019 in O.A. No. 360 of 2018 filed by Shree Nath Sharma Vs Union of India and others directed that CPCB shall facilitate the District Magistrates in preparation of District Environmental Plan by placing Model plan on its website. This model plan may be adopted as per local requirements by all District under supervision of District Magistrate.

District environment plan should outline the present status and gaps in implementation and also identify agencies responsible, requirement of infrastructure facilities for sewage treatment, waste management, monitoring environmental quality etc. District environment plan should also provide timelines for implementation, identify local issues, constraints in implementation, priority action areas and issues requiring more attention.

Based on the District Environment Plans, State Environment Plans and National Environment Plan shall be prepared. It is required to ensure that information pertaining to all District Environment Plans is captured into State Environment Plans and National Environment Plan.

AIM, OBJECTIVE & SCOPE OF THE DISTRICT ENVIRONMENT

PLAN:

The Aims and Objectives of this District Environment Plan (DEP) are given below:

- To ensure conservation of environment and natural resources at district level.
- Restore ecological balance.
- To achieve the Sustainable Development Goals (SDGs) and district level targets within the prescribed timeline.
- To ensure sustainability at district level following the principles of resource efficiency.
- To ensure decentralized micro level planning, execution and monitoring regarding environment conservation.
- To incorporate all facets of environmental conservation in micro level planning.
- To harness active participation of all stakeholders in planned environment conservation actions.
- Assess, Mitigate and monitor adverse impacts of various pollution sources at district level.
- Capacity building of stakeholder, department, agencies, organizations and individuals at district level to understand and implement micro level environmental conservation actions.
- To harness inter-departmental coordination for implementation of action plans.
- To develop local knowledge centres and expertise for developing environmental conservation strategies at district level.
- To develop and implement micro monitoring system at district level.

This plan has been prepared in line with the model District Environment Plan (DEP) of CPCB and covers following thematic areas:

- Waste Management Plan
 - Solid Waste Management Plan
 - Plastic Waste Management
 - C&D Waste Management

- Biomedical Waste Management
 - Hazardous Waste Management
 - E-Waste Waste Management
-
- Water Quality Management Plan
 - Domestic Sewage Management Plan
 - Industrial Wastewater Management Plan
 - Air Quality Management Plan
 - Mining Activity Management plan
 - Noise Pollution Management Plan
 - Conservation of Water bodies
 - Prevention of Illegal sand mining
 - Environment Threats
 - Soil and Agriculture Land

IMPORTANT HON'BLE SUPREME COURT/ HON'BLE HIGH COURT/ HON'BLE NGT ORDERS:

- Directions of the Hon'ble Supreme Court, Hon'ble NGT and other courts for Polluted River Stretches (Chambal and Banas), Action plans Non-Attainment Cities (Jaipur, Alwar, Udaipur, Kota and Jodhpur), Action plans for Industrial Clusters (Pali, Bhiwadi, Jodhpur and Jaipur), Action plan River Rejuvenation, Restoration of Water Bodies, Wetlands, Specific Action Plans for Pali, Balotra and Jodhpur etc must be included in the DEP and Action Plan may be included with timelines. (Here only write about the information being included in detailed chapter)
- Information about any District Specific case and Committee/Task Force Constituted.

2. BRIEF PROFILE OF THE DISTRICT

ADMINISTRATIVE PROFILE OF DISTRICT:



DHOLPUR DISTRICT INTRODUCTION

GEOGRAPHICAL PROFILE:

Dholpur is situated in the eastern-part of Rajasthan, located at 26° 42' 0" North Latitude, 77° 54' 0" East Longitude. It is bordered by Bharatpur district of Rajasthan and Agra of Uttar Pradesh in the north, Morena of Madhya Pradesh in the south, Karauli district of Rajasthan in the west and Uttar Pradesh and Madhya Pradesh to the east.

LOCATION & BOUNDARY:-

Agra district, Uttar Pradesh
Etawah district, Uttar Pradesh



←Dholpur district→



Bhind district, Madhya Pradesh
Sheopur district, Madhya Pradesh
Gwalior district, Madhya Pradesh
Morena district, Madhya Pradesh



ADMINISTRATIVE SET-UP

SUB DIVISION & POLICE STATIONS:-

The District is divided into 6 sub divisions. Sub division consists of 15 police stations viz.

- Dholpur District consists of six blocks (Panchayat Samiti) namely **Dholpur, Rajakhera, Bari, Baseri, Saipau** and **Sarmathura**. Sarmathura is recent addition to the list.
- There are six Tehsil in Dholpur district which are- **Dholpur, Rajakhera, Bari, Baseri, Sarmathura** and **Saipau**.
- There are **189 gram panchayats** and **855 revenue villages** in Dholpur.

Topographical Features:

Rivers:-

Dholpur District has 3 Rivers (Chambal, Parvati, Ghambhiri)

Flora:

Many Spices of flora is available in district Dholpur. (Exp. Tree Species -102, Shrubs & herbs species -110, Climbers species -33, Herbs and Grass species- 69 etc.)

Ex- Kher, Raunjh, Babool, Dhok, Neem, Hingota, Chhela, Seesham, Tendu, Peepal, Gular, Pakhar, Gurgan, Aam, Ber, Jamun, Safada, Karanj, Google, Dhatura, Neem Geloye, Satawari, Dhaman, Nota, Kush, Kansh etc.

Fauna:

Many species fauna located in District Dholpur. (Ex. Mammals species -37, Reptiles – 19, Ambhibia- 4, Fishes Fauna-7, Avifauna- 167 etc.)

Ex- Tiger, Leopard, Bear, Wild boar, Gazella, Rabbit, Jackal, Newala, Sambhar, Crocodile, Ghariyal Mongoose Common, Girgit, Indian Pythoon, Indian cobera, Bulbul, Blue jay, Crane Sarus, Cuckoo, Owl, Indian Skimmer, Peacock, Grey etc.

CLIMATE CONDITION

CLIMATE AND RAINFALL:

Climate of the district can be classified as semi arid type. The summers are very hot & dry and winters are very cold. The summer season prevails from March to mid June after which the rainy season starts with the onset of monsoon rains lasting till the end of September. During May/ June months, the mean daily temperature is about 40°C. The potential evapotranspiration is 1780.0 mm annually. The mean annual rainfall of the district is 563.94 mm (2001-2011). The long term normal annual rainfall (1951-2000) is 722.1mm. The occurrence of mild droughts is highest in the district. Normal drought occurs sometimes where as severe type of drought occurs rarely.

TEMPERATURE:

Climate of the district can be classified as semi arid type. The summers are very hot & dry and winters are very cold. The summer season prevails from March to mid June after which the rainy season starts with the onset of monsoon rains lasting till the end of September. During May/ June months, the mean daily temperature is about 40°C. The potential evapotranspiration is 1780.0 mm annually.

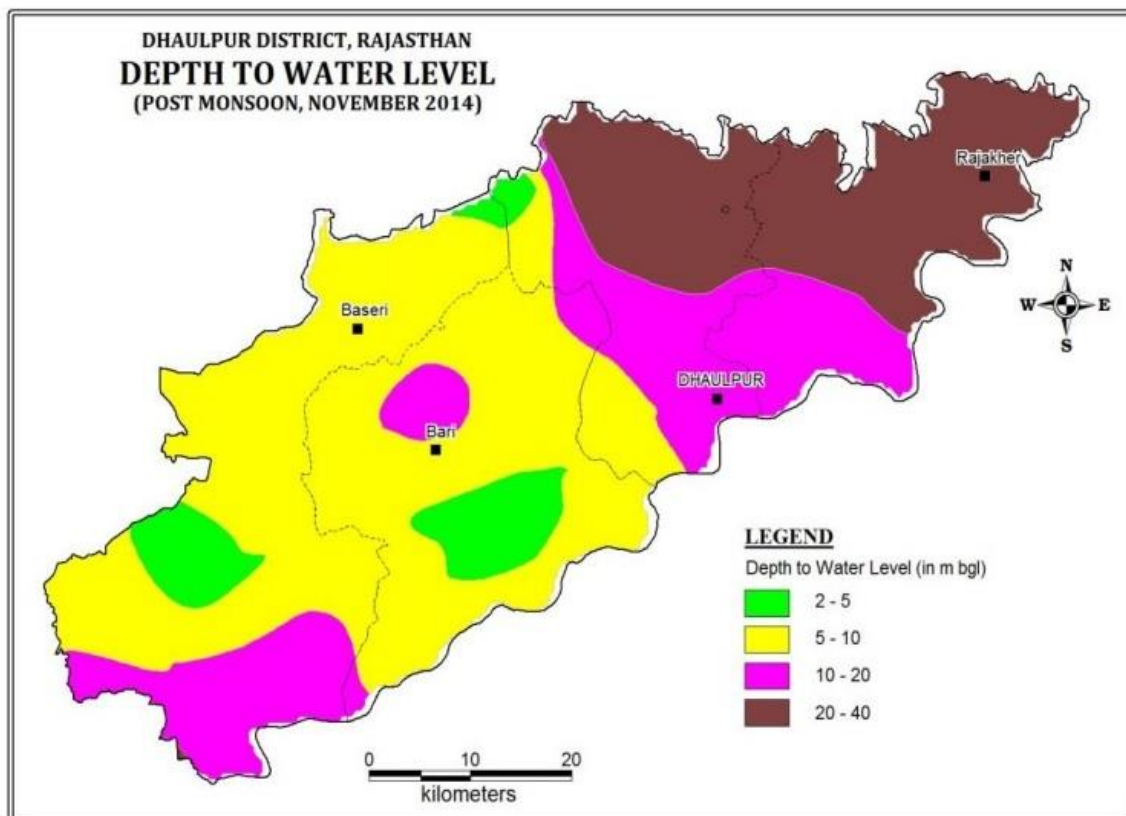
HUMIDITY:

The air is generally dry except during the southwest monsoon period. The relative humidity ranges from less than 20% to 85 %.

DEMOGRAPHIC PROFILE

AREA AND POPULATION:

Dholpur is the smallest district of Rajasthan with an area of 3034 Square Km. Administratively, Dholpur has been divided into six Tehsils Dholpur, Bari, Baseri, Rajakhera, Saipau & Sarmathura. According to the 2011 census Dholpur district has a population of 1, 206,516, roughly equal to the nation of Bahrain or the US state of New Hampshire. This gives it a ranking of 394th in India (out of a total of 640). The district has a population density of 398 inhabitants per square kilometre (1,030/sq mi). Its population growth rate over the decade 2001-2011 was 22.78% Dhaulpur has a sex ratio of 845 females for every 1000 males, and a literacy rate of 70.14% It's population according to census of the year 2011 was 12,06,516 comprising 6,53,647 males and 5,52,869 females. Effective literacy was 76.56%; male literacy was 84.22% and female literacy was 67.74%.



GEOLOGICAL AND MINERALOGICAL PROFILE

MINERALS:-

Dholpur District Minerals (Red Stone, Chambal Sand, Salt peeter quarter, Mica, Mn.etc.)

GROUND WATER STATUS

The ground water in the district is mainly influenced by the basin of Chambal and Parbati. The general depth of water below ground surface varies from 15 metres to 30 metres. In Dholpur district, ground water occurs in mainly four hydro-geological formations. These hydrogeological formations are alluvium, sandstone, shale and limestone and among these formations, alluvium is the most important formation as it covers the maximum area and also it is the most potential among different hydro-geological formations.

MAJOR INDUSTRIES

Dholpur has about 200 textile/handloom units.

Agri based industries-there are 291 agro based industries in Dholpur District offering employment to more than 1800 workers.

Forest Based Industries: - Due to dense network of forests, the district has about 338 units in this sector with work force of more than 950 employees.

Mineral Based industries: - The abundance of minerals in Dholpur has given boost to these industries totaling around 527 units having work force of 2998 employees.

The District committee, so formed in Dholpur District comprised of following members to evolve and execute District Environmental Plan

1	District Collector Dholpur	Chairman
2	Chairman Zila ParisadDholpur	Member
3	Chairman Nagar ParisadDholpur	Member
4	Chairman Nagar Palika, Bari	Member
5	Chairman Nagar Palika, Rajakhera	Member
6	Chairman Panchayat Samiti Dholpur	Member
7	Chairman Panchayat Samiti, Bari	Member
8	Chairman Panchayat Samiti, Baseri	Member
9	Chairman Panchayat Samiti, Saipau	Member
10	Chairman Panchayat Samiti, Rajakhera	Member
11	Chairman Panchayat Samiti, Sarmathura	Member
12	Addl. District Collector Dholpur	Member
13	Addl. Superintendent of Police Dholpur	Member
14	CM & HO Dholpur	Member
15	Executive Engineer, PHED Dholpur	Member
16	Executive Engineer, PWD Dholpur	Member
17	Executive Engineer, Water Resource Dholpur	Member
18	District Agriculture officer, Dholpur	Member
19	District veterinary and A.H. Officer, Dholpur	Member
20	Chief Executive officer, Zila ParisadDholpur	Member
21	Executive officer, Nagar ParisadDholpur	Member
22	Executive officer, Nagar Palika, Bari	Member
23	Executive officer, Nagar Palika, Rajakhera	Member
24	Regional Manager RIICO Dholpur	Member
25	General Manager District Industries Center Dholpur	Member
26	Chief Education officer District Dholpur	Member
27	District Public Relations Officer, Dholpur	Member
28	Deputy Conservator of Forest Dholpur	Member Secretary

Constitution of District Environment District Special Task Forces

1	District Collector Dholpur	Chairman
2	Superintendent of Police, Dholpur	Member
3	CM & HO Dholpur	Member
4	PMO Dholpur	Member
5	Executive officer, Nagar Parisad Dholpur	Member
6	Executive officer, Nagar Palika, Bari	Member
7	Executive officer, Nagar Palika, Rajakhera	Member
8	Regional officer RPCB Bharatpur	Member
9	Regional Manager RIICO Dholpur	Member
10	General Manager District Industries Center Dholpur	Member
11	District Agriculture officer, Dholpur	Member
12	District veterinary and A.H. Officer, Dholpur	Member
13	Chief Executive officer, Zila Parisad Dholpur	Member
14	Executive Engineer, PWD Dholpur	Member
15	Executive Engineer, Water Resource Dept. Dholpur	Member
16	Executive Engineer, PHED Dholpur	Member
17	Executive Engineer, Ground Water Alwar	Member
18	District Transport officer, DHOLPUR	Member
19	Chief Education officer (Primary) District Dholpur	Member
20	Chief Education officer (Middle) District Dholpur	Member
21	Inspector Factories & boilers Dept. Bharatpur	Member
22	Mining Engineer, Mines & Geology Dept. Dholpur	Member
23	District Public Relations Officer, Dholpur	Member
24	Deputy Conservator of Forest Territorial Dholpur	Member Secretary

CHAPTER 1 - WASTE MANAGEMENT PLAN

1.1 SOLID WASTE MANAGEMENT PLAN

Solid waste means any garbage, refuse, sludge from a wastewater treatment plant, water supply treatment plant, or air pollution control facility and other discarded materials including solid, liquid, semi-solid, or contained gaseous material, resulting from industrial, commercial, mining and agricultural operations, and from community activities, but does not include solid or dissolved materials in domestic sewage, or solid or dissolved materials in irrigation return flows or industrial discharges. Compliance and planning of Solid Waste Management in the district according to Solid Waste Management Rules, 2016 is as follows:

(I) SOLID WASTE MANAGEMENT PLAN (FOR EACH ULB)

(i) Solid Waste Management Plan (for each ULB)							
No.	Action Areas	Details of Data Requirement	Units of Measurable Outcome	Please enter Measurable Outcome for District	ULB1	ULB2	ULB3
	Name of Urban Local Body (ULB)		[name of ULB]		Municipal Council Dholpur	Municipal Board Bari	Nagar Palika Rajakhera
	No of ULBs in the District		[Nos]	5	1	1	3
	Population		[Nos as per 2011 census]	229467	133075	62721	33671
SW1	Report on inventory of total solid waste Generation						
SW1a		Total solid waste Generation	[in MT/Day] or [Not estimated]	105.5	64	28	13.5
SW1b		Qty. of Dry Waste segregated	[in MT/Day] or [Collection Not initiated]	14	segregation not started	14	segregation not started
SW1c		Qty. of Wet Waste segregated	[in MT/Day] or [Collection Not initiated]	12	segregation not started	12	segregation not started
SW1d		Qty. of C&D Waste segregated	[in MT/Day] or [Collection Not initiated]	11	10	1	0
SW1e		Qty. of Street Sweeping	[in MT/Day] or [Not estimated]	4	Not estimated	4	Not estimated
SW1f		Qty. of Drain Silt	[in MT/Day] or [Not estimated]	10	Not estimated	10	Not estimated

SW1g		Qty. of Domestic Hazardous Waste(DHW) collected	[in MT/Day] or [No Facility]	0.5	No Facility	0.05	No facility
SW1h		Qty. of Other Waste (Horticulture, sanitary waste, etc.)	[in MT/Day] or [Qty not estimated]	1.55	0.50	0.95	0.1
SW1i		No of Old dump sites	[Nos] or [None]	4	2	1	1
SW1j		Qty stored in dumpsites	[MT] or [Not estimated]	48679 CUM	14760	11458 MT	10193
SW1k		No of Sanitary landfills	[Nos] or [None]	0	none	0	none
SW1l		No of wards	[nos]	105	45	35	25
SW2	Compliance by Bulk Waste Generators						
SW2a		No of BW Generators	[numbers] or [inventory not done]	7	3	3	1
SW2b		No of on-site facilities for Wet Waste	[numbers] or [No data]	6	3	3	no data
SW3	Compliance in segregated waste Collection SW Collection						
SW3a		Total generation	[Automatic] from SW1a	105.5	64	28	13.5
SW3b		Wet Waste	[in MT/Day] or [Collection Not initiated]	6	segregation not started	6	segregation not started
SW3c		Dry Waste	[in MT/Day] or [Collection Not initiated]	1	segregation not started	1	segregation not started
SW3d		C&D Waste	[in MT/Day] or [Collection Not initiated]	11	10	1	0

SW4	Waste Management Operations						
SW4a		Door to Door Collection	[100%] / [partial %] / [not initiated]	100%	100%	100%	100%
SW4b		Mechanical Road Sweeping	[100%] / [partial%] / [not initiated]	100%	not initiated	not initiated	not initiated
SW4c		Manual Sweeping	[100%] / [partial%]	100%	100%	100%	100%
SW4d		Segregated Waste Transport	[100%] / [partial %] / [not initiated]	38.54%	15.62%	partial 50%	partial 50%
SW4e		Digesters (Bio-methanation)	[% of WW] / [not initiated]	0	not initiated	0	not initiated
SW4f		Composting operation	[% of WW] / [not initiated]	35%	20%	50%	not intalled
SW4g		MRF Operation	[MRF used] / [not installed]	0	not installed	Installed	not installed
SW4h		Use of Saniatry Landfill	[% of SW collected] / [no SLF]	0%	no SLF	No SLF	no SLF
SW4i		Reclamation of old dumpsites	[initiated] / [not initiated]	0	not initiated	initiated	initiated
SW4j		Linkage with Waste to Energy Boilers / Cement Plants	[initiated] / [not initiated]	0	not initiated	not initiated	not initiated
SW4k		Linkage with Recyclers	[initiated] / [not initiated]	0	initiated	not initiated	not initiated
SW4l		Authorization of waste pickers	[initiated] / [not initiated]	0	initiated	initiated	initiated
SW4m		Linkage with TSDF / CBMWTF	[initiated] / [not initiated]	0	not initiated	not initiated	not initiated
SW4n		Involvement of NGOs	[initiated] / [not initiated]	0	not initiated	not initiated	not initiated

SW4o		Linkage with Producers / Brand Owners	[initiated] / [not initiated]	0	not initiated	not initiated	not initiated
SW4p		Authorisation of Waste Pickers		0			
SW4q		Issuance of ID Cards	[initiated] / [not initiated]	0	initiated	initiated	0
SW5	Adequacy of Infrastructure						
SW5a		Waste Collection Trolleys	[Nos. Required] / [Nos. Available]	12/10	6/5	3/3	3/2
SW5b		Mini Collection Trucks	[Nos. Required] / [Nos. Available]	61/38	30/ 15	12/ 12	18/11
SW5c		Segregated Transport	[yes] / [no] / [% area covered]	70%	yes (60%)	100	yes (50%)
SW5d		Bulk Waste Trucks	[Nos. Required] / [Nos. Available]	5/2	4/2	0/0	1/0
SW5e		Waste Transfer points	[Nos. Required] / [Nos. Available] / [Not available]	3-0	1/0	0	3/0
SW5f		Bio-methanation units	[Nos. Required] / [Nos. Available]	0/0	0/0	0	0/0
SW5h		Composting units	[Nos. Required] / [Nos. Available]	9/9	4/4	3/3	2/2
SW5i		Material Recovery Facilities	[used or installed] / [not available]	8/4	not installed	installed	not available
SW5k		Waste to Energy (if applicable)	[Required] / [Nos. Available]	1/0	1/0	0	0
SW5l		Waste to RDF	[Required] / [Nos. Available]	1/0	1/0	0	Required
SW5m		Sanitary Land fills	[Nos] / [Nos. Available]	3/0	1/0	1/0	1/0
SW5n		Capacity of sanitary landfills	[MT] // [Nos. Available]	10000 mt	NA	10000 MT	0
SW5o		Waste Deposit Centers (DHW)	[Nos] / [Nos. Available]	2/2	1/1	NA	1/1

SW5p		Other facilities	[give or select from list]	0	Nil	NA	nil
SW6	Notification and Implementation of By-Laws						
SW6a		Notification of By-laws	[done] / [in progress] / [not initiated]	DONE	done	done	done
SW6b		Implementation of by-laws	[done] / [in progress] / [not initiated]	in Progress	done	in progress	in progress
SW7	Adequacy of Financial Status of ULB						
SW7a		CAPEX Required	[INR] / [Not required]	25.00 crore	14 crore	5.00 crore	6 Crore
SW7b		OPEX	[INR per Year] / [% of requirement]	6.50 crore	3 crores	2.00 crore	1.50 crore
SW7c		Adequacy of OPEX	[Yes] / [No]	no	No	NO	no

SOLID WASTE MANAGEMENT PLAN FOR THE DISTRICT IS AS FOLLOWS:

Solid waste to be managed in accordance with the SWM Rules, 2016 issued by the Ministry of Environment and Forests, Government of India,

Sl No	Action Points	Strategy and approach	Stake holders responsible
1.	Collection, Segregation & Treatment of solid waste	Solid waste to be managed in accordance with the SWM Rules, 2016	ULBs
2.	Strengthening the capacities of the ULBs	All ULB staff to be trained to impart adequate knowledge for proper implementation of sustainable SWM Logistic infrastructure to be make available from the Financial allocation made by the Govt in this regard.	ULBs
3.	Notification and Implementation of By-Laws	ULBs will frame bye-laws incorporating the provisions of SWM Rules, 2016 and notify accordingly.	ULBs DIPRO
4.	Awareness	Public awareness to be created through IEC campaign with participation of SHGs, NGOs, students. Leaflets explaining waste segregation practice to be distributed in the entire household.	ULB NGOs SHGs Insp. of Schools DIPRO
5.	Monitoring and Review	EO of ULBs will time to time monitor/review the performance of their respective ULB on waste segregation, processing, treatment and disposal and take corrective measures. Dist. Level Committee will also sit bi-monthly to review the status of execution of SWM.	EO of ULBs Dist. Level Committee

1.2 PLASTIC WASTE MANAGEMENT:

The Ministry of Environment, Forest and Climate Change has notified the Plastic Waste Management (Amendment) Rules 2018. The amended Rules lay down that the phasing out of Multi-layered Plastic (MLP) is now applicable to MLP, which are “non-recyclable, or non-energy recoverable, or with no alternate use.”

The amended Rules also prescribe a central registration system for the registration of the producer/importer/brand owner. The Rules also lay down that any mechanism for the registration should be automated and should take into account ease of doing business for producers, recyclers and manufacturers. The centralized registration system will be evolved by Central Pollution Control Board (CPCB) for the registration of the producer/importer/brand owner. While a national registry has been prescribed for producers with presence in more than two states, a state-level registration has been prescribed for smaller producers/brand owners operating within one or two states. Present scenario and subsequent planning for Plastic Waste Management (for each ULB) is as follows:

PRESENT SCENARIO IN THE DISTRICT:

(ii) Plastic Waste Management (for each ULB)							
No.	Action Areas	Details of Data Requirement	Measurable Outcome	Please enter Measurable Outcome for District	Please enter Measurable Outcome for District	Please enter Measurable Outcome for District	Please enter Measurable Outcome for District
	Name of ULB		[name of ULB]		Municipal Council Dholpur	Municipal Board Bari	Municipal Council Dholpur
	Population		[Nos as per 2011 census]	229557	133075	62721	33671
PW1	Inventory of plastic waste generation						
PW1a		Estimated Quantity of plastic waste generated in District	[MT/day] / [Not Estimated]	5.16	2.56	1.9 MT/Day	0.70
PW2	Implementation of Collection						
PW2a		Door to Door collection	[100%] / [partial %] / [not initiated]	100%	100%	100%	100%
PW2b		Segregated Waste collection	[100%] / [partial %]	25.20%	15.62%	Partial (50%)	10%
PW2c		Plastic waste collection at Material Recovery Facility	[MRF used] / [not installed]	not installed	not installed	initiated	not installed
PW2d		Authorization of PW pickers	[Nos] / [not initiated]	30	15	8	7
PW2e		PW collection Centers	[Nos] / [not established]	5	2	1	2
PW3	Establishment of linkage						

	with Stakeholders						
PW3a		Established linkage with PROs of Producers	[Nos] / [not established]	not established	not established	not established	not established
PW3b		Established linkage with NGOs	[Nos] / [not established]	not established	not established	not established	not established
PW4	Availability of facilities for Recycling or utilization of PW						
PW4a		No. of PW recyclers	[Nos]	1	1	0	0
PW4b		No Manufacturers	[Nos]	0	nil	0	0
PW4c		No of pyrolysis oil plants	[Nos]	0	nil	0	0
PW4d		Plastic pyrolysis	[Quantity in MT sent per Month]	0	nil	0	0
PW4e		Use in road making	[Quantity MT used per Month]	0	nil	0	0
PW4f		Co-processing in Cement Kiln	[Quantity in MT sent per Month]	0.2	0.2	0	0
W5	Implementation of PW Management Rules, 2016						
W5a		Sealing of units producing < 50-micron plastic	[All sealed] / [Partial] / [no action]	NA	NA	NOT APPLICABLE	Not applicable
PW5b		Prohibiting sale of carry bags < 50 micron	[Prohibited] / [Partial] / [no action]	Prohibited	Prohibited	Prohibited	prohibited
PW5c		Ban on Carry bags and	[Implemented] /	Implemented	Implemented	Implemented	implemented

		other single use plastics as notified by State Government	[Partial] / [no action] / [No Ban]				
PW6	Implementation of Extended Producers Responsibility (EPR) through Producers/Brand-owners						
PW6a		No of Producers associated with ULBs	[Nos] / [None]	none	none	none	none
PW6b		Financial support by Producers / Brand owners to ULBs	[Nos] / [None]	none	none	none	none
PW6c		Amount of PRO Support	[Rs...]	NA	NA	nil	NA
PW6d		Infrastructure support by Producers / Brand owners to ULBs	[Nos of Producers] / [None]	none	none	none	none
PW6e		No of collection centres established by Producers / Brand owners to ULBs	[Nos] / [None]	none	none	none	none

PLASTIC WASTE MANAGEMENT PLAN FOR THE DISTRICT IS AS FOLLOWS:

Plastic waste to be managed in accordance with the Plastic Waste Management (Amendment) Rules, 2018 with an emphasis on the 3R principles of Reduce, Reuse and Recycle; ULBs will manage the Plastic Waste generated under their respective jurisdiction while PHE will manage plastic waste in respect of rural areas as per proposal being prepared for engagement of GP wise vendor for Plastic Waste collection

Sl No	Action Points	Strategy and approach	Stake holders responsible
1	Implementation of Collection	Door to Door collection, Segregated Waste collection, Plastic waste collection at MRF, Authorization of PW pickers, PW collection Centers to be ensured	ULBs
2	Establishment of linkage with Stakeholders	List of PROs of producers/NGO to be collected and steps to be taken for initiating linkage as per SWMR-2016 and PWMR-2018	ULBs
3	Availability of facilities for Recycling or utilization of PW	Each ULBs in consultation with DI&CC will prepare plan for setting up facilities for Recycling or utilization of PW. Plan to be submitted in next Dist Committee meeting.	ULBs GM DI&CC
4	Implementation of PW Management Rules, 2016	To Ensure Implementation of PW Management Rules, 2016, and 2018 ULBs in association with Dist administration will conduct Surprise inspection on the commercial establishments for the eradication of banned plastic and imposes fine for those who store, sell and use the same. Public Awareness and participation also to be created in this regard	ULBs
5	Implementation of Extended Producers Responsibility (EPR) through Producers/ Brand-owners	ULBs will identify Producers/Brand-owners and will act in accordance with Govt policies/notifications in this regard	ULBs

1.3 CONSTRUCTION & DEMOLITION-C & D WASTE MANAGEMENT:

In India, it is very common to see huge piles of C&D waste, stacked alongside of major roads resulting in traffic jams, congestion and disruption & chocking of drains. Around 30% of the total municipal solid waste generated in the country comprises of C&D waste. The C&D Waste generated in each city would reflect different characteristics based on each city's growth pattern and lifestyle. While retrievable items such as bricks, wood, metal, tiles are recycled, the concrete and masonry waste, accounting for more than 50% of the waste from construction and demolition activities, are not being currently recycled in India.

Construction activities occur to build/rebuild new structures or old structures. Demolition activities are growing due to old structures needing restructuring or replacement with time to make way for vertical structures or flats in line with growing needs of the society. All such activities generate C&D waste. Disposal of such debris in a safe environment is a big challenge for the builders, developers, and owners.

When in one hand the disposal of debris is a challenge, then, on the other hand, there is an acute shortage of naturally available aggregates for the construction of buildings. Reduction of this demand is possible only with the reusing or recycling of waste generated from the construction activities. For the district the inventory of C&D waste estimated is 15300kg /Day. Municipalities and Gaon Panchayats have been asked to ensure that the wastes are disposed without affecting the nearby Environment.

Present scenario and subsequent planning for Plastic Waste Management (for each ULB) is as follows:

PRESENT SCENARIO IN THE DISTRICT:

(iii) C&D Waste Management							
No.	Action Areas	Details of Data Requirement	Measurable Outcome	Please enter Measurable Outcome for District	Please enter Measurable Outcome for District	Please enter Measurable Outcome for District	Please enter Measurable Outcome for District
	Name of ULB		[name of ULB]		Municipal Council Dholpur	Municipal Board Bari	Municipal Board rajakhera
	Population		[Nos as per 2011 census]	229557	133075	62721	33671
CD1	Inventory of C&D waste generation						
CD1a		Estimated Quantity	[Kg/Day] / [Not estimated]	13700 kg	10000 kg	1000 kg/Day	2700 kg
CD2	Implement scheme for permitting bulk waste generators						
CD2a		Issuance of Permissions by ULBs	[Initiated] / [Not initiated]	not initiated	Not initiated	Not initiated	Not initiated
CD3	Establishment of C&D Waste Deposition centres						
CD3a		Establishment of Deposition Points	[Yes] / [No]	Yes/01	Yes/01	YES	Yes/1

CD3b		C&D Deposition point identified	[Yes] / [No]	Yes/02	Yes/01	YES	Yes/1
CD4	Implementation of By-Laws for CD Waste Management						
CD4a		Implementation of By-laws	[notified] / [not notified]	notified	Notified	notified	notified
CD4b		Collection of Deposition / disposal Charges	[Initiated] / [Not initiated]	initiated	Initiated	initiated	initiated
CD5	Establishment of C&D Waste recycling plant or linkage with such facility						
CD5a		Establishment CD Waste Recycling Plant	[Established] / [Sent to shared Facility] / [No facility exists]	no facility exists	No Facility exists	No facility exists	No facility exists
CD5b		Capacity of CD Waste Recycling Plant	[MT/Day] / [Not available]	not available	Not available	Not available	Not available

C & D WASTE MANAGEMENT PLAN FOR THE DISTRICT IS AS FOLLOWS

SI No	Action Points	Strategy and approach	Stake holders responsible
1	Inventory of C&D waste generation	<ol style="list-style-type: none"> 1. Survey and Investigate the C & D generators under the jurisdiction of ULB. 2. Identify regular bulk waste generators (Contractors or Builders) 3. Distribution of Staffs in Collecting , Transporting and Processing of C & D 4. Treatment of C & D Wastes or Transformation 	ULB Staffs
2	Implement scheme for permitting bulk waste generators	<ol style="list-style-type: none"> 1. Contractors/Builders should have registration id in the ULBs to collect & transfer the C & D Wastes to the C & D Deposition Centre for treatment. 2. The Generators should contact the ULB staffs or Constructors/Builders 3. The generators should be charged as per by law. 	<ol style="list-style-type: none"> 1. C & D Wastes generators 2. Contractors/ Builders 3. ULB Staffs 4. C & D Deposition Centre staffs
3	Establishment of C&D Waste Deposition centres	<ol style="list-style-type: none"> 1. Identify and allocation of land for deposition centre 2. Construction and fencing of deposition centre. 3. Identify the transportation point. 	<ol style="list-style-type: none"> 1. ULB 2. NGOs
4	Implementation of By-Laws for C & D Waste Management	<ol style="list-style-type: none"> 1. Publish notification for registration of C & D Waste generators, generator charge, transportation cost, selling price, etc. By-Laws. 	<ol style="list-style-type: none"> 1. ULB staffs 2. C & D Deposition centre staffs
5	Establishment of C&D Waste recycling plant or linkage with such facility	<ol style="list-style-type: none"> 1. Involve NGOs or to start-ups to establish a C&D Waste recycling plant, 2. 2. Any ULB initiative (if possible) 	NGOs

1.4 BIO-MEDICAL WASTE MANAGEMENT:

‘Biomedical waste’ (BMW) means any waste, which is generated during the diagnosis, treatment or immunization of human beings or animals or research activities

PRESENT SCENARIO IN THE DISTRICT:

There are 72 bedded hospitals and 38 non bedded health care facilities in the district along with 48 path labs and 16 dental clinics which produces significant amount of Bio Medical Waste.

(iv) Biomedical Waste Management (for each ULB)							
No.	Action Areas	Details of Data Requirement	Measurable Outcome	Please enter Measurable Outcome for District	Please enter Measurable Outcome for District	Please enter Measurable Outcome for District	Please enter Measurable Outcome for District
	Name of ULB		Dholpur, Rajakhera, Bari		Municipal Council Dholpur	Municipal Board Bari	Municipal Board Rajakhera
	Population		[Nos as per 2011 census]	222376	125989	62721	33666
BMW1	Inventory of Biomedical Waste Generation						
BMW1a		Total no. of Bedded Hospitals	[50 Nos]	72	41	20	11
BMW1b		Total no. of non-bedded HCF	[5 Nos]	38	24	9	5
BMW1c		Total no. Clinics	[5 Nos]	20	13	7	0
BMW1d		No of Veterinary Hospitals	[0 Nos]	9	6	2	1
BMW1e		Pathlabs	[8 Nos]	48	29	14	5
BMW1f		Dental Clinics	[0 Nos]	16	12	3	1
BMW1g		Blood Banks	[0 Nos]	2	2	0	0

BMW1h		Animal Houses	[0 Nos]	0	0	0	0
BMW1i		Bio-research Labs	[0 Nos]	0	0	0	0
BMW1j		Others	[0 Nos]	0	0	0	0
BMW2	Authorization of HCFs by SPCBs / PCCs						
BMW2a		Bedded HCFs	[Nos Authorized] 26	3	1	1	1
BMW2b		Non-bedded HCFs	[Nos Authorized] 14	8	7	1	0
BMW3a	Biomedical Waste Treatment and Disposal Facilities (CBMWTFs)						
BMW3a		No of CBMWTFs	None	1	1	1	1
BMW3b		Linkage with CBMWTFs	[Yes] with M/s JRR Waste Management Pvt. Ltd., Agra	yes	yes	yes	yes
BMW3c		Capacity of CBMWTFs	[Adequate]	adequate	adequate	adequate	adequate

BMW3d		Requirements of CBMWTFs	[Require]	Required	Required	Required	Required
BMW3e		Captive Disposal Facilities of HCFs	[None]	none	none	none	none
BMW4	Compliance by CBMWTFs						
BMW4a		Compliance to standards	[Meeting]	not meeting	not meeting	not meeting	not meeting
BMW4b		Barcode tracking by HCFs / CBMWTFs	[None]	none	none	none	none
BMW4c		Daily BMW lifting by CBMWTFs	[262 Kg / day]	not lifting daily	not lifting daily	not lifting daily	not lifting daily
BMW5	Status of Compliance by Healthcare Facilities						
BMW5a		Pre-segregation	[100%]	100%	100%	100%	100%
BMW5b		Linkage with CBMWTFs	[60 %]	100%	100%	100%	100%

Biomedical waste Management plan for the district is as follows:

Sl. No	Action Points	Strategy and approach	Stake holders responsible
1.	Collection, Segregation & Treatment of solid waste	Biomedical Waste to be managed in accordance with the Bio Medical Waste Management Rules, 2016.	All HCF concerned
2.	Preparation of 'Inventory of Biomedical Waste Generation'	Inventorisation of Occupiers and data on bio-medical waste generation, treatment & disposal which are to be updated at least two times each year	CMHO Dholpur 1. Dist. Vet. Officer 2. All BDOs
3.	Capacity building/ training of HCFs	HCF should be made aware of their roles and responsibilities under the Bio Medical Waste Management Rules, 2016 For proper management of the waste in the healthcare facilities the technical requirements of waste handling are needed to be understood and practiced by each category of the staff in accordance with the BMW Rules, 2016.	CMHO Dholpur
4.	Authorization of HCFs	Every HCFs and Clinical Establishment will be asked to get authorization from PCB Raj As per the Bio Medical Waste Management Rules, 2016	PCB Raj CMHO Dholpur EO of All MBs
5.	Biomedical Waste Treatment and Disposal Facilities (CBMWTFs)	Matter relating to setting up a Common Biomedical Waste Treatment and Disposal Facilities (CBMWTFs) in the district will be taken up with Health Deptt/PCB	Dist Admin, RSPCB, CMHO, Dholpur

6.	Monitoring and Review	<p>District Level Monitoring Committee under the chairmanship of district Collector, Dholpur to monitor the compliance of the provisions of these rules by the HCFs</p> <p>The District Level Monitoring Committee will comprise of District Collector Dholpur, CMHO Dholpur and representatives from PCB Raj, Public Health Engineering Department, ULBs, Indian Medical Association among others representative from CBWTF.</p> <p>District Collector Dholpur will be the chairman of the committee CMHO Dholpur will be the Member Secretary of this Committee.</p>	District Level Monitoring Committee
----	-----------------------	--	-------------------------------------

1.5 HAZARDOUS WASTE MANAGEMENT:

“Hazardous waste” means any waste which by reason of characteristics such as physical, chemical, biological, reactive, toxic, flammable, explosive or corrosive, causes danger or is likely to cause danger to health or environment, whether alone or in contact with other wastes or substances,

Present Scenario in the district:

(v) Hazardous Waste Management							
No.	Action Areas	Details of Data Requirement	Measurable Outcome	Please enter Measurable Outcome for District	Please enter Measurable Outcome for District	Please enter Measurable Outcome for District	Please enter Measurable Outcome for District
HW1	Inventory of Hazardous Waste						
HW1a		No of HW Generating Industry	[12 Nos.]	no information	no information	no information	no information
HW1b		Quantity of HW	[143.128 MT/Annum]	no information	no information	no information	no information
HW1c		Quantity of Incinerable HW	Nil	no information	no information	no information	no information
HW1d		Quantity of land-fillable HW	[41.121 MT/Annum]	no information	no information	no information	no information
HW1e		Quantity of Recyclable / utilizable HW	[102.007 MT/Annum]	no information	no information	no information	no information
HW2	Contaminated Sites and illegal industrial hazardous waste dumpsites						
HW2a		No of HW dumpsites	[None]	none	none	none	none
HW2c		Probable Contaminated Sites	Nil	none	none	none	none
HW3	Authorization by SPCBs/PCCs						

HW3a		No of industries authorized	[12 Nos.]	no information	no information	no information	no information
HW3b		Display Board of HW Generation in front of Gate	[12 Nos.]	no information	no information	no information	no information
HW3	Availability of Common Hazardous Waste TSDF						
HW3a		Common TSDF	[Sent to TSDF Udaipur]	no information	no information	no information	no information
HW3b		Industries linkage with TSDF	[12 Nos.]	no information	no information	no information	no information
HW4	Linkage of ULBs in District with Common TSDF						
HW4a		ULBs linked to Common TSDFs for Domestic Hazardous Waste	No	no	no	no	no

Hazardous Waste Management plan for the district is as follows:

Sl No	Action Points	Strategy and approach	Stake holders responsible
1.	Preparation of 'Inventory of Hazardous Waste Generators'	Including Manufacturer /recycler/ refurbisher /handler of Lead Acid battery, and other lead scrap/ashes/residues not covered under Batteries (Management and Handling) Rules, 2001.	1. General Manager ,District Industries & Commerce Centres (DI&CC) GM, DI&CC, Dholpur 2. EO of ULBs 3. PCB, Raj 4. All BDOs
2.	Awareness/training of Waste Generators	ULBs take necessary steps for public awareness and importance of segregation of potentially hazardous domestic waste. Training on Handling/disposal will be provided to informal sector persons who are engaged in trading, dismantling, and recycling of e-waste/batteries.	1. GM, DI&CC, Dholpur 2. Representative from PCB Raj
3.	Authorization of Industries	PCB Raj	
4.	Waste deposition centres for domestic hazardous waste	ULBs will establish waste deposition centres for domestic hazardous waste and give direction for waste generators to deposit domestic hazardous wastes at this centre for its safe disposal.	ULBs
5.	Monitoring of Compliance	District Level Monitoring Committee under the chairmanship of district collector, Dholpur to monitor the compliance of the provisions of Hazardous waste Management Rules The District Level Monitoring Committee will comprise of ADC GM, DI&CC Dholpur, representatives from PCB Raj, Public Health Engineering Department, ULBs as members among others. GM, DI&CC Dholpur shall be the Member Secretary of this Committee.	District Level Monitoring Committee

1.6 E- WASTE MANAGEMENT:

Electronic waste or e-waste describes discarded electrical or electronic devices. Used electronics which are destined for refurbishment, reuse, resale, salvage recycling through material recovery, or disposal are also considered e-waste

At present E-waste management is in nascent stage in the district and only informal trading, dismantling, and recycling of e-waste exists in the District.

Present Scenario in the district:

(vi) E-Waste Waste Management							
No.	Action Areas	Details of Data Requirement	Measurable Outcome	Please enter Measurable Outcome for District	Please enter Measurable Outcome for District	Please enter Measurable Outcome for District	Please enter Measurable Outcome for District
EW1	Status of facilitating authorized collection of E-Waste						
EW1a		Does the citizen are able to deposit or provide E-Waste through Toll-free Numbers in the District	[No]	no	no	no	no
EW1c		Collection centers established by ULB in District	[None]	none	none	4	none
EW1d		Collection centers established by Producers or their PROs in the District	[None]	none	none	0	none
EW1e		Does the district has linkage with authorized E-Waste recyclers / Dismantler	[yes]	no	no	no	no
EW1f		No authorized E-Waste recyclers / Dismantler	[4 nos.]	none	none	0	none
EW2	Status of Collection of E-Waste						

EW2a		Authorizing E-Waste collectors	[None]	none	none	none	none
EW2b		Involvement of NGOs	[No]	none	none	none	none
EW2c		Does Producers have approached NGOs/ Informal Sector for setting up Collection Centers.	[No]	no	no	no	no
EW2d		Does ULBs have linkage with authorized Recyclers / Dismantlers	[No]	no	no	no	no
EW4	Control E-Waste related pollution						
EW4a		Does informal trading, dismantling, and recycling of e-waste exists in District	[yes]	no	no	no	no
EW4b		Does the administration closed illegal E-Waste recycling in the District	[yes]	no	no	no	no
EW4c		No of actions taken to close illegal trading or processing of E-Waste	[NO]	nill	nill	NA	nill
EW5	Creation of Awareness on E-Waste handling and disposal						
EW5a		Does PROs / Producers conducted any District level Awareness Campaigns	[No]	no	no	no	no
EW5c		Does District Administration conducted any District level Awareness Campaigns	[No]	no	no	no	no

E- Waste Management plan for the district is as follows:

Sl No	Action Points	Strategy and approach	Stake holders responsible
1.	Collection of E-Waste	<ul style="list-style-type: none">• Collection Centers to be established by ULBs in District• Door to door collection• Authorizing E-Waste collectors	EO of ULBs
2.	Control E-Waste related pollution and Awareness	<ul style="list-style-type: none">• Creation of Awareness on E-Waste handling and disposal	Dist Administration, GM DI&CC, ULBs NGOs

CHAPTER 2 - WATER QUALITY MANAGEMENT PLAN

There is no polluted river stretch or waste water producing industry in the district. However time to time surprise checking would be done to ensure that no untreated water from any industry is released in the water bodies.

PRESENT SCENARIO IN THE DISTRICT:

Ground water availability is not adequate in the district as per current measurement and estimation.

2.0 Water Quality Management Plan							
No.	Action Areas	Details of Data Requirement	Measurable Outcome	Please enter Measurable Outcome for District	Please enter Measurable Outcome for District	Please enter Measurable Outcome for District	Please enter Measurable Outcome for District
WQ1	Inventory of water resources in District						
WQ1a		Rivers	[Nos] and [Length in Km]	4 Nos Rivers in district Detail as under Chambal River-132 Km Parbati River-120 Km Bamni River-26 Km Utangan River-75 Km			
WQ1b		Length of Coastline	[in Km]	Nil			
WQ1c		Nalas/Drains meeting Rivers	[Nos]	46			
WQ1d		Lakes / Ponds	[Nos] and [Area in Hectares]	25 nos 36547.91 ha.			
WQ1e		Total Quantity of sewage and industrial discharge in District		[Automatic] (SW1a+IW1b)	Nil		
	Control of Groundwater Water Quality			Not Pertain to this office			
WQ2a		Estimated number of bore-wells	[Nos]	Not Pertain to this office			

WQ2b		No of permissions given for extraction of groundwater	[Nos]	Not Pertain to this office	Nil	Nil	Nil
WQ2c		Number of groundwater polluted areas	[Nos]	Not Pertain to this office			
WQ2d		Groundwater Availability	[adequate] / [not adequate]	Not Pertain to this office			
WQ3	Availability of Water Quality Data			Not Pertain to this office			
WQ3a		Creation of monitoring cell	[Yes] / [No]	Not Pertain to this office			
WQ3b		Access to Surface water and groundwater quality data at DM office	[Available] or [Not available]	Not Pertain to this office	NA	NA	NA
WQ4	Control of River side Activities			Not Pertain to this office			
WQ4a	Control of River side Activities	River Side open defecation	[Fully Controlled] / [Partly controlled] / [no Measures taken]	Not Pertain to this office	Fully Controlled	Fully Controlled	Fully Controlled
WQ4b		Dumping of SW on river banks	[Fully Controlled] / [Partly controlled] / [no Measures taken]	Not Pertain to this office	Fully Controlled	Fully Controlled	Fully Controlled
WQ4c		Control measures for idol immersion	[Measures taken] / [Measures taken post immersion] / [No Measures taken]	Not Pertain to this office			

WQ5	Control of Water Pollution in Rivers			Not Pertain to this office			
WQ5a		Percentage of untreated sewage	[%] (automatic SM1g/SM1a)	Not Pertain to this office			
WQ5b		Monitoring of Action Plans for Rejuvenation of Rivers	[Monitored] / [Not monitored] [not applicable]	Not Pertain to this office			
WQ5c		[Nos]	Not Pertain to this office				
WQ6	Awareness Activities		Not Pertain to this office				
WQ6a		[Nos in previous year]	Not Pertain to this office				
WQ6b	Oil Spill Disaster Contingency Plan		Not Pertain to this office				
WQ6a		[Created] / [Not Created]	Not Pertain to this office				
WQ6b		[Prepared] / [Not Prepared]	Not Pertain to this office				
WQ7	Protection of Flood plains		Not Pertain to this office				
WQ7a		[Yes] / [No]	Not Pertain to this office				
	Rainwater Harvesting		Not Pertain to this office				
WQ8a		[Implemented] / [Not implemented]	Not Pertain to this office				

Water Quality Management Plan for the district is as follows:

No.	Action Points	Strategy and approach	Stake holders responsible
1	Inventory of water resources in District	Inventory of water resources in District covering Rivers and other natural water bodies, Nalas/ Drains meeting Rivers Lakes / Ponds, etc which is to be completed within Nov,2019 Total Quantity of sewage and industrial discharge are also to be assessed	CEO Zilla Parishad DFO ULBs
2	Collection of Water Quality Data	A monitoring cell with representatives from PHE, WR, UWS etc will be constituted. The cell will updated action will be taken accordingly.	EE PHE,
3	Control of Groundwater Water Quality	EE PHE, ULBs	
4	Control of River side Activities	River side activities like River Side open defecation, Dumping of SW on river banks, Idol immersion etc. to be controlled	Dist. Admin EE PHE, BDOs EO of ULBs
5	Awareness Activities	District level campaigns on protection of water quality and Control of Water Pollution in Rivers	EE PHE BDOs
6	Protection of Flood plains	Encroachment of flood plains to be regulated.	Dist. Admin Circle Officers,
7	Rainwater Harvesting	A separate Action plan for Rain water harvesting in line with Govt policy would be prepared.	
8	Repair and treatment of water bodies/Talav	Some water bodies have been identified so far for restoration/ repair/and treatment work	Dist. Admin BDOs Forest Deptt ULB officials CEO zila Parishad Land and water resource deptt

CHAPTER 3 - DOMESTIC SEWAGE MANAGEMENT PLAN

PRESENT SCENARIO IN THE DISTRICT:

3.0 Domestic Sewage Management Plan							
No.	Action Areas	Details of Data Requirement	Measurable Outcome	Please enter Measurable Outcome for District	Please enter Measurable Outcome for District	Please enter Measurable Outcome for District	Please enter Measurable Outcome for District
SM1	Inventory of Sewage Management				Municipal Council Dholpur	Municipal Board Bari	Nagar Palika Rajakhera
SM1a		Total Quantity of Sewage generated in District from Class II cities and above	[MLD]	13.60	13.60	0.00	0.00
SM1b		No of Class-II towns and above	[Nos]	1	1	0	0
SM1c		No of Class-I towns and above	[Nos]	Null	Null	0	0
SM1d		No of Towns needing STPs	[Nos]	1	1	0	0
SM1e		No of Towns STPs installed	[Nos]	1	1	0	0
SM1f		Quantity of treated sewage flowing into Rivers (directly or indirectly)	[MLD]	2.1	2.1	NA	NA
SM1g		Quantity of untreated or partially treated sewage (directly or indirectly)	[Automatic]	NA	NA	NA	NA

SM1h		Quantity of sewage flowing into lakes	[MLD]	Nil	Nil	NA	NA
SM1i		No of industrial townships	[Nos]	Nil	Nil	NA	NA
SW2	Adequacy of Available Infrastructure for Sewage Treatment						
SM2a		% sewage treated in STPs	[Automatic]	70%	70%	0%	0%
SM2b		Total available Treatment Capacity	[MLD]	13	13	0	0
SM2c		Additional treatment capacity required	[MLD]	0.6	0.6	0	0
SM3	Adequacy of Sewerage Network						
SM3a		No of ULBs having partial underground sewerage network	[Nos]	1	1	0	0%
SM3b		No of towns not having sewerage network	[Nos]	0	0		
SM3c		% population covered under sewerage network	[Automatic]	70%	70%	0%	0%

Domestic Sewage Management Plan for the district is as follows:

Sl No	Action Points	Strategy and approach	Stake holders responsible
1	Inventory of Sewage Management	Survey and identification all Households to ensure proper drainage and management of sewage.	ULB
2	Adequacy of Available Infrastructure for Sewage Treatment	<p>1. Some Household may have its own Sewage management infrastructure so as to pull down this water to maintain water level in earth and to reuse this water at various other domestic works after removing contaminants. i.e. Grey water after removing contaminants may be used in gardens, toilet flushing etc.</p> <p>2. All households should be connected to sewage management infrastructure either at home or through proper drain across ULB to Sewage treatment Plant.</p>	Beneficiary, ULB
3	Adequacy of Sewerage Network	Proper drains constructed with proper technique connecting with all Households under ULB to ensure total sewage management.	ULB
4	Inventory of Sewage Management	Survey and identification all Households to ensure proper drainage and management of sewage.	ULB
5	Adequacy of Available Infrastructure for Sewage Treatment	<p>1. Some Household may have its own Sewage management infrastructure so as to pull down this water to maintain water level in earth and to reuse this water at various other domestic works after removing contaminants. i.e. Grey water after removing contaminants may be used in gardens, toilet flushing etc.</p> <p>2. All households should be connected to sewage management infrastructure either at home or through proper drain across ULB to Sewage treatment Plant.</p>	Beneficiary, ULB

CHAPTER 4 - INDUSTRIAL WASTE WATER MANAGEMENT PLAN:

PRESENT SCENARIO IN THE DISTRICT

4.0 Industrial Wastewater Management Plan							
No.	Action Areas	Details of Data Requirement	Measurable Outcome	Please enter Measurable Outcome for District	Please enter Measurable Outcome for District	Please enter Measurable Outcome for District	Please enter Measurable Outcome for District
IWW1	Inventory of industrial wastewater Generation in District						
IWW1a		No of Industries discharging wastewater	[08 Nos]	NA	NA	NA	NA
IWW1b		Total Quantity of industrial wastewater generated	Approx. 250 KLD	NA	NA	NA	NA
IWW1c		Quantity of treated IWW discharged into Nalas / Rivers	NIL	NA	NA	NA	NA
IWW1d		Quantity of un-treated or partially treated IWW discharged into lakes	NIL	NA	NA	NA	NA
IWW1e		Prominent Type of Industries	[Agro Based; Dairy; Paper Mill; Pharma; Power Plant]	NA	NA	NA	NA
IWW1f		Common Effluent Treatment Facilities	Not required	NA	NA	NA	NA

IWW2	Status of compliance by Industries in treating wastewater						
IWW2a		No of Industries meeting Standards	[8 Nos]	NA	NA	NA	NA
IWW2b		No of Industries not meeting discharge Standards	Nil	NA	NA	NA	NA
IWW2c		No of complaints received or number of recurring complaints against industrial pollution in last 3 months	Nil	NA	NA	NA	NA
AWW4	Status of Action taken for not meeting discharge standards						
IWW4a		No industries closed for exceeding standards in last 3 months	Nil	NA	NA	NA	NA
IWW4b		No of industries where Environmental Compensation was imposed By SPCBs	Nil	NA	NA	NA	NA

INDUSTRIAL WASTEWATER MANAGEMENT PLAN FOR THE DISTRICT IS AS FOLLOWS:

All the industries producing chemically and physically polluted water will be identified and located. The sensitive water bodies will be identified and efforts will be started to preserve aquatic environment. Mass awareness and participation of stakeholders will be assured for better management and utilization of industrial waste water in the district.

CHAPTER 5 AIR QUALITY MANAGEMENT PLAN

PRESENT STATUS OF THE DISTRICT

5.0 Air Quality Management Plan							
No.	Action Areas	Details of Data Requirement	Measurable Outcome	Please enter Measurable Outcome for District	Please enter Measurable Outcome for District	Please enter Measurable Outcome for District	Please enter Measurable Outcome for District
AQ1	Availability of Air Quality Monitoring Network in District				Dholpur	Bari	Rajakhera
AQ1a		Manual Air Quality monitoring stations of SPCBs /CPCB	Nil		-	NA	-
AQ1c		Automatic monitoring stations Operated by SPCBs / CPCB	Nil		-	NA	-
AQ2	Inventory of Air Pollution Sources				-	-	-
AQ2a		Identification of prominent air polluting sources	Brick Kiln-65; Tyre Pyrolysis-6; Dairy-6; Lead/Battery Processing-7; Paper Mill-1; Cupola Furnance- 15; Induction Furnance-4		-	NA	-
AQ2b		No of Non-Attainment Cities	Nil		-	NA	-
AQ2c		Action Plans for non-attainment cities	[Not yet prepared] NA		-	NA	-

AQ3	Availability of Air Quality Monitoring Data at DMs Office				-		-
AQ3a		Access to air quality data from SPCBs & CPCB through Dashboard	Nil		-	NA	-
AQ4	Control of Industrial Air Pollution				-		-
AQ4a		No of Industries meeting Standards	Nil		-	NA	-
AQ4b		No of Industries not meeting discharge Standards	[Nos]		-	NA	-
AQ5	Control of Non-industrial Air Pollution sources				-		-
AQ5a		Control open burning of Stubble –during winter	NIL [Nos of fire incidents]		-	NA	-
AQ5b		Control Open burning of Waste – Nos of actions Taken	[Nos]		-	NA	-
AQ5c		Control of forest fires	[No SoP]		-	NA	-
AQ5d		Vehicle pollution check centers	[100% ULBs covered]	Petrol:- 11 Diesel:- 9	Petrol:- 6 Diesel:- 5	Petrol:- 4 Diesel:- 3	Petrol:- 1 Diesel:- 1
AQ5e		Dust Suppression Vehicles	[0% ULBs covered]		-	NA	-
AQ6	Development of Air Pollution complaint redressal system				-	-	-
AQ6a		Mobile App / Online based air pollution complaint redressing system of SPCBs.	[Not available]		-	-	-

Air Quality Management Plan for the district is as follows:

Main Sources of Air pollution in the district are Industrial (Brick Industry/crusher), Vehicular traffic, and Domestic cooking (Rural areas) . This plan aims to reduce the sources and amount of pollutants responsible for reducing the ambient air quality.

Sl No	Point of Action	Strategy and approach	Stake holders responsible
1	Air Quality Monitoring and Collection off data	<ul style="list-style-type: none"> • To be monitored in association with PCB. • PCB will be requested to set up facility in Dholpur district to monitor Air Quality 	PCB
2	Inventory of Air Pollution Sources	Inventory of potential Air Polluting Sources will be made for better monitoring.	GM, DI&CC, Dholpur PCB
3	Monitoring of polluting vehicle	<ul style="list-style-type: none"> • Stress will be given for setting up more Auto Emission Testing Centres in the district in addition to the existing centres.. • DTO will ensure that all Auto Emission Testing Centres functions as per Govt norms. 	DTO GM DI&CC
4	Monitoring of compliance by Industries/Brick kilns	They will monitor for violation and submit report to PCB, DC	GM, DI&CC Dholpur PCB
5	Creation of Awareness	Public awareness to be created through IEC campaign with participation of SHGs, NGOs, students.	Dist Administration/ NGOs DIPRO
6	Promotion of Clean fuel/new tech. chulhas	BDOs NGOs	

CHAPTER 6 - MINING ACTIVITY MANAGEMENT PLAN:

PRESENT STATUS

6.0 Mining Activity Management plan-NA							
No.	Action Areas	Details of Data Requirement	Measurable Outcome	Please enter Measurable Outcome for District	Please enter Measurable Outcome for District	Please enter Measurable Outcome for District	Please enter Measurable Outcome for District
MI1a	Inventory of Mining in District						
MI1a		Type of Mining Activity	[Sand Mining] / [Iron Ore] / [Bauxite] / [Coal] / Other [specify]	sand stone (140), Masonry Stone (17)		NA	
			Multiple selection in order of magnitude of operations	NA	NA	NA	NA
MI1b		No of Mining licenses given in the District	[Nos]	157	157	NA	NA
MI1c		Area covered under mining	[Sq Km]	4.185	4.185	NA	NA
MI1d		Area of District	[Sq Km]	3084	3084	NA	NA
MI1e		Sand Mining	[Yes] / [No]	NA	NA	NA	NA
MI1f		Area of sand Mining	[River bed] / [Estuary] / [Non -river deposit]	NA	NA	NA	NA
MI2	Compliance to Environmental Conditions			-			

MI2a		No of Mining areas meeting Environmental Clearance Conditions	Nos	139	139	NA	NA
MI2b		No of Mining areas meeting Consent Conditions of SPCBs / PCCs	[132 Nos] (As per record RSPCB)	120	120	NA	NA
MI3a	Mining related environmental Complaints						
MI3b		No of pollution related complaints against Mining Operations in last 1 year	NIL	Nil	NA	NA	NA
MI4	Action against non-complying mining activity						
MI4a		No of Mining operations suspended for violations to environmental norms	NIL	Nil	NA	NA	NA
MI4b		No of directions issued by SPCBs	NIL	Nil	NA	NA	NA

Mining Activity Management plan for the district is as follows

Sl No	Action Points	Strategy and approach	Stake holders responsible
1	Preventing illegal mining	<p>Identification of river stretches where there are chances for illegal sand mining and Frequent surprise checks in those river stretches by Circle Level Committees.</p> <p>Circle level Committee to be headed by the Circle officer and will comprise among others officials from Forest Dept., BDO. etc</p>	<p>Circle Officer DFO BDOs</p>
2	Monitoring	<p>Checking for Violation of approved mining plan/environmental norms by the</p> <p>DFO will notify a Phone number to receive mining related complains will give wide publicity of the number.</p>	<p>PCB, Raj DFO</p>

CHAPTER 7 - NOISE POLLUTION MANAGEMENT PLAN

Noise can be defined as unwanted or undesired sound and Noise pollution simply means when there is a lot of noise in the environment which is consequentially harming the environment. Like smoking, noise pollution affects active and passive recipients when noise levels cross certain safe boundaries. Noise pollution affects both human health and behavior. Noise pollution also impacts the health and well-being of wildlife.

Most activities that cause pollution are essential to meet the needs of the growing population and development. Therefore preventive measures to minimize pollutants are more practical than their elimination.

PRESENT STATUS

7.0 Noise Pollution Management Plan							
No.	Action Areas	Details of Data Requirement	Measurable Outcome	Please enter Measurable Outcome for District	Please enter Measurable Outcome for District	Please enter Measurable Outcome for District	Please enter Measurable Outcome for District
NP1	Availability Monitoring equipment						
NP1a		No. of noise measuring devices with district administration	[Nos] / [None]	NA	NA	NA	NA
NP1b		No. of noise measuring devices with SPCBs	[01 Nos] [Portable]	NA	NA	NA	NA
NP2	Capability to conduct noise level monitoring by State agency / District authorities						
NP2a		capability to conduct noise level monitoring by State agency / District authorities	[Not available]	NA	NA	NA	NA
NP2	Management of Noise						

	related complaints						
NP2a		No of complaints received on noise pollution in last 1 year		NA	NA	NA	NA
				NA	NA	NA	NA
				NA	NA	NA	
NP2b		No of complaints redressed	Nil	NA	NA	NA	NA
NP3	Compliance to ambient noise standards						
NP3a		Implementation of Ambient noise standards in residential and silent zones	[Never]			Occasional	OCCASIONAL
NP3b		Noise monitoring study in district	[not carried out]				
NP3c		Sign boards in towns and cities in silent zones	[Not Installed]	Not Installed	Not Installed	Not Installed	NOT INSTALLED

Noise Pollution Management plan for the district is as follows

SI No	Action Points	Strategy and approach	Stake holders responsible
1	Noise level Monitoring	<ul style="list-style-type: none"> • PCB or its authorized Agency will conduct Noise level Monitoring. • Monitoring equipment/ noise measuring devices will be procured. 	PCB
2	Categorization of areas	<ul style="list-style-type: none"> • Categorisation of areas into industrial, commercial residential or silence areas/zones will be completed soon. • Sign boards will be installed in Silent zones. 	PCB All EO of ULBs
3	Restriction on use of loud speakers/ PA system etc and monitoring	<ul style="list-style-type: none"> • Loud speaker or a public address system will not allow to be used without obtaining written permission from the authority. • A loud speaker or a public address system will not allow to be used at night (between 10.00 p.m. to 6.00 a.m.) • Special team for monitoring during festivals. 	District Administration
4	Monitoring of polluting vehicle	<p>DTO will take steps for monitoring/ checking of vehicles to ensure environmental norms are followed by the vehicles.</p> <p>Such vehicles are checked on the road daily and action take and made challans of such polluted vehicles. made challans details are follows-</p> <p>Year 2019-20 3064 challans, year 2020-21 904 challans yet,</p> <p>There are 18 pollution centre are working district Dholpur. These pollution center are working under DTO DHOLPUR.</p>	DTO
5	Creation of Awareness	Steps will be taken to make	Dist Administration/ NGOs

CHAPTER 8 - PREVENTION OF ILLEGAL SAND MINING

The district is part of three river basins viz. 'Parbati River Basin' 'Chambal River Basin' and 'Gambhir River Basin'. The Chambal River drains in southern part of the district. The Gambhir river basin occupies small area in the north-eastern corner. To prevent illegal mining of Bajri district administration is taking strict actions and penalties. Action taken with respect to prevention of illegal mining and number of registered cases are given below.

145 mining leases of mineral sandstone and 20 mining leases of masonry stone are effective in Dhaulpur district. Out of which 75 mining leases fall within a radius of 10 km from the Ramsagar Sanctuary, Kesarbagh Sanctuary and Chambal Gharial Sanctuary. Due to non-renewal of mining work in the said mining leases by the State Pollution Control Board, mining work is being stopped in legitimate mining leases.

In the last three years, 37 mining leases of mineral sandstone and masonry stone have been canceled and 8 mining leases are being processed. Details of action taken by the Police and Forest Department against illegal sand mining / transport / storage under Section 29/51 Wildlife Protection Act 1972 in Chambal Basin are as follows.

Time	No of registered Cases	Challan Presented in Court	FR	Pending at the Level of Police
01-01-2019 to 31-12-2019	84	81	1	2
01-01-2020 to 31-10-2020	109	37	0	72

Details of action taken by the Police and Forest Department against illegal sand mining/ transport in Parbati Basin

Time	Illegal Mining	Illegal Transport	Illegal Stock	Total Cases	Amount Collected	Registered FIR
01-04-2019 to 31-03-2020	0	41	1	42	4774910	1
01-04-2020 to 30-11-2020	0	8	2	10	1514000	1

Forest Department Division Dholpur: -

Budget Requirement for Protection of Illegal Mining and Non-Forestry activities

S. No	Name of Item	Quantity	Unit	Rate (in lac.)	Budget (in lac.)
1	Plantation 3000 ha/per year	30000	Ha.	2.2/ha.	66000
2	4" ft Wall 50 km/per year	500	Km	24/km	12000
3	6" ft Wall (Range Sarmathura-Jhiri, Madanpur, Rijhoni,Gironiya,Damoh) 25 km/per year	250	Km	36/km	9000
4	Talai/Pokhar (500 per year)	5000	Nos	2/pokher	10000
5	Anicat (50 per year)	500	Nos	6/anicut	3000
6	Road Side Plantation – NH (NH-3, 27 Km., NH-123, 108 Km., NH-23, 72 Km.)	207	km	10/ km	2070
7	Road Side Plantation – SH (Sarmathura to Jagner 50 km.,Bari to Lakhua ka adda-25km., Sarmathura to Sone ka Gurja 40 km., Sone ka Gurja to Talab sai 25 km.,	140	km	10/km	1400
8	Road Side Plantation – ODR-100 Km.	100	km	10/km	1000
9	Road Side Plantation – MDR-200 Km.	200	km	10/km	2000
10	Road Side Plantation – Link Road-300 km.	300	km	10/km	3000
11	High-tech Nursery Development-7 (1 Crore per nursery)	7	Nos	100/nursery	700
12	Control Room (for Protection of Illegal mining and other Non-Forestry activities)- Building, Man with machine (Desktop/Laptop), W.C. with water facilities, wireless facilities Basic Phone, etc.	LS	Proreta	Proreta	100

13	Check post – Sagarpara and Baretha Building with W.C. and water facility, Compound protection wall Fencing with Gate , watch Tower, etc.	LS	Proreta	Proreta	200
14	Illegal activities Protection Naka Building with W.C. and water facility, Compound protection wall fencing with Gate , watch Tower, Parking Yard campus	LS	Proreta	Proreta	300
15	Illegal activities Protection vehicle for mobility, ie.- Camper/Jeep-7, Mini Bus-1, Motor cycle-10, bycycle-40	LS	Proreta	Proreta	250
16	Arms for Forest offence Protection 1- Revolver-20 2- Gun 12 Borr-30	Proreta	Proreta	Proreta	75
17	Surveillance activities for forest protection and conservation 1-camera-150, 2-Binocular-150,	Proreta	Proreta	Proreta	100
18	Hiring of machineris for protection illegal Mining, Transport, Stock, activities – (JCB, Tractor, Troly, hydra, etc)	LS	Proreta	Proreta	200
19	Incentive for Informer (for Illegal activities Protection as- mining, wood cutting, illegal hunting, forest Fire, Trace passer, etc.)	Proreta	Proreta	Proreta	90
20	Mis. Expenditure	Proreta	Proreta	Proreta	50
	Total				111535

BUDGET REQUIREMENT FOR DISTRICT ENVIRONMENT PLAN

S.No	Name of Dept.	Budget (in lac.)
1	Dist. Administration	5000
2	Forest Division Dholpur	111535
3	ULBs Dholpur	3500
4	ULBs Rajakhera	3000
5	ULBs Bari	3000
6	CMHO	3500
7	GM DIC	500
8	RIICO	2500
9	PWD	1000
10	PHED	2000
11	WRD	2000
12	CEO	500
13	PCB	500
14	POLICE	500
15	DTO	200
16	DIPRO	100
17	NGOs	200
	Total	139535