

Rajasthan Medical Services Corporation Ltd.

D Block, Swasthya Bhawan, Tilak Marg, C-Scheme JAIPUR (Raj)

Phone No: 0141-2223887, Fax No: 0141-2228065

E-Mail : rmsc@nic.in

No: F-8() RMSC/EPM/M-2/DDW/12-14/NIT-14/13/ 321

Date: 30/1/13

CORRIGENDUM

Subject:- Amended technical Specification under NIT No. F-8() RMSC/EPM/M-2/DDW/12-14/NIT-14/13/266 dated 11.01.2013

Reference:- Pre Bid meeting held on 21/01/2013.

In reference to above cited subject NIT, the technical specification of tender document and classification on here by amended as blow:-

Sr. No.	Existing Specification & Conditions	Amended Specification & Conditions
1.	<p><u>Heavy Duty Storage Racking System (14 ft.) with Pallets</u></p> <ul style="list-style-type: none"> • Height of the rack - 4200mm • Horizontal beam length- 2300mm • Depth of rack -900mm • Number of level-three (Two level sheet plus pallet support bar) • Capacity per level-2000 kgs • Capacity per module-6000 kgs • Quantity of Main modules - 10 no's • Quantity of Additional. Module-88 no's • Quantity of Additional. Half module 2no's <p>UPRIGHT FRAME (VERTICAL) A. UPRIGHT CHANNEL</p> <p style="padding-left: 20px;">A. UPRIGHT CHANNEL: Length-4200mm Section- 80x80x1.6mm (10 bend sec)</p> <p style="padding-left: 40px;">Quantity a. Main Module-10x2x2 = 40 No's b. Addl.Module-88x1x2 = 176 No's c. Addl. Half Module 2x1x2 = 4 No's</p> <p style="padding-left: 20px;">B. BASE PLATE: Section-150x121x3.15mm Quantity b. Main Module~ 40 No's b. Addl.Module-176 No's</p> <p style="padding-left: 20px;">C. ANCHOR BOLT : Length-100mm - M12x100 Quantity a. Main Module-10x8 = 80 No's b. Addl.Module-88x4 = 352 No's c. Addl. Half Module 2x4 = 4 No's</p> <p style="padding-left: 20px;">D. HORIZONTAL BRACING : Length -768mm Section 30x30x6 'C' (thickness 1.6mm) Quantity 3 No's. per upright frame</p> <p style="padding-left: 20px;">E. DIAGONAL BRACING : a. Length-945mm Section- 30x30x6 'C' (thickness 1.6mm) Quantity 6 No's. per upright frame</p>	<p><u>Heavy Duty Storage Racking System (14 ft.)</u></p> <ul style="list-style-type: none"> • Height of the rack - 4200mm • Horizontal beam length- 2300mm • Depth of rack -900mm • Number of level-three (Two level sheet plus pallet support bar) • Capacity per level-2000 kgs • Capacity per module-4000 kgs <p>UPRIGHT FRAME (VERTICAL) A. UPRIGHT CHANNEL</p> <p style="padding-left: 20px;">B. UPRIGHT CHANNEL: Length-4200mm Section- 80x80x1.6mm (10 bend sec)</p> <p style="padding-left: 40px;">Quantity a. Main Module-10x2x2 = 40 No's b. Addl.Module-88x1x2 = 176 No's c. Addl. Half Module 2x1x2 = 4 No's</p> <p style="padding-left: 20px;">B. BASE PLATE: Section-150x121x3.15mm Quantity b. Main Module~ 40 No's b. Addl.Module-176 No's</p> <p style="padding-left: 20px;">C. ANCHOR BOLT : Length-100mm - M12x100 Quantity a. Main Module-10x8 = 80 No's b. Addl.Module-88x4 = 352 No's c. Addl. Half Module 2x4 = 4 No's</p> <p style="padding-left: 20px;">D. HORIZONTAL BRACING : Length -768mm Section 30x30x6 'C' (thickness 1.6mm) Quantity 3 No's. per upright frame</p> <p style="padding-left: 20px;">E. DIAGONAL BRACING : a. Length-945mm Section- 30x30x6 'C' (thickness 1.6mm) Quantity 6 No's. per upright frame</p> <p>HORIZONTAL BEAM</p>

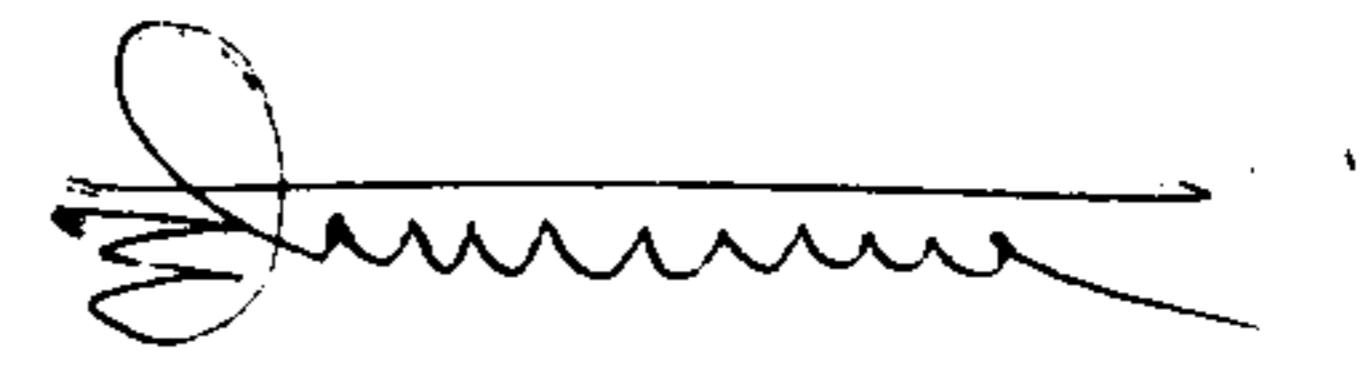
<p>HORIZONTAL BEAM</p> <p>A. BEAM CHANNEL: Length-2300mm Section- 85x50x1.6 mm Box Section Quantity a. Main Module-10x6 = 60 No's b. Addl.Module~88 x6 = 528 No's c. Addl. Half Module 2x6 = 12 No's</p> <p>B. LOCKING PIN: Quantity-2 No's per beam</p> <p>C. PALLET SUPPORT BAR: Length-900mm (Guided Pallet Support with Stopper) Section- 123x65x1.6 'C' a. Main Module-10x4 = 40 No's b. Addl.Module-88x4 = 352 No's c. Addl. Half Module 2x2 = 4 No's</p> <p>E. DECK SHEET IN STEEL: A. Length-900mm Section- 150x40x19x1 mm Quantity 14 nos per level B. Length-900mm Section 200x40x19x1 mm Quantity 1 no. per level a. Main Module-10x2 = 20 No's b. Addl.Module-88x2 = 176 No's c. Addl. Half Module 2x2 = 4 No's The deck panel shall be of 6 bend.</p> <p>Material: Material should be of high grade steel IS 5986 for Upright and IS 513D or equivalent for Decking Panel. All the components shall be thoroughly pre-treated in 8 stage pre treatment process and all the components shall be painted with epoxy powder coating and film thickness of minimum 50 microns. Color: Orange color for beam and base plate rest all components should be in blue color.</p>	<p>A. BEAM CHANNEL: Length-2300mm Section- 85x50x1.6 mm Box Section Quantity a. Main Module-10x6 = 60 No's b. Addl.Module~88 x6 = 528 No's c. Addl. Half Module 2x6 = 12 No's</p> <p>B. LOCKING PIN: Quantity-2 No's per beam</p> <p>C. PALLET SUPPORT BAR: Length-900mm (Guided Pallet Support with Stopper) Section- 123x65x1.6 'C' a. Main Module-10x4 = 40 No's b. Addl.Module-88x4 = 352 No's c. Addl. Half Module 2x2 = 4 No's</p> <p>E. DECK SHEET IN STEEL: A. Length-900mm Section- 150x40x19x1 mm Quantity 14 nos per level B. Length-900mm Section 200x40x19x1 mm Quantity 1 no. per level a. Main Module-10x2 = 20 No's b. Addl.Module-88x2 = 176 No's c. Addl. Half Module 2x2 = 4 No's The deck panel shall be of 6 bend.</p> <p>Material: Material should be of high grade steel IS 5986 for Upright and IS 513D or equivalent for Decking Panel. All the components shall be thoroughly pre-treated in 8 stage pre treatment process and all the components shall be painted with epoxy powder coating and film thickness of minimum 50 microns. Color: Orange color for beam and base plate rest all components should be in blue color.</p>
<p>2. <u>Item No. – 2 : Heavy Duty Storage Racking System (8 ft.) with Pallets</u></p> <ul style="list-style-type: none"> • Height of the rack - 2400mm • Horizontal beam length- 2300mm • Depth of rack -900mm • Number of level-three (Two level sheet plus pallet support bar) • Capacity per level-2000 kgs • Capacity per module-6000 kgs • Quantity of Main modules - 10 no's • Quantity of Additional. Module-88 no's • Quantity of Additional. Half module 2no's <p>UPRIGHT FRAME (VERTICAL) A. UPRIGHT CHANNEL</p> <p>A. UPRIGHT CHANNEL : Length-2400mm Section- 80x80x1.6mm (10 bend sec) Quantity a. Main Module-10x2x2 = 40 No's b. Addl.Module-88x1x2 = 176 No's c. Addl. Half Module 2x1x2 = 4 No's</p> <p>B. BASE PLATE: Section-150x121x3.15mm</p>	<p><u>Item No. – 2 : Heavy Duty Storage Racking System (8 ft.)</u></p> <ul style="list-style-type: none"> • Height of the rack - 2400mm • Horizontal beam length- 2300mm • Depth of rack -900mm • Number of level-three (Two level sheet plus pallet support bar) • Capacity per level-2000 kgs • Capacity per module-4000 kgs <p>UPRIGHT FRAME (VERTICAL) A. UPRIGHT CHANNEL</p> <p>B. UPRIGHT CHANNEL : Length-2400mm Section- 80x80x1.6mm (10 bend sec) Quantity a. Main Module-10x2x2 = 40 No's b. Addl.Module-88x1x2 = 176 No's c. Addl. Half Module 2x1x2 = 4 No's</p> <p>B. BASE PLATE: Section-150x121x3.15mm Quantity b. Main Module~ 40 No's b. Addl.Module-176 No's</p>

<p>Quantity b. Main Module~ 40 No's b. Addl.Module-176 No's</p> <p>C. ANCHOR BOLT: Length-100mm Section- M12x100 Quantity a. Main Module-10x8 = 80 No's b. Addl.Module-88x4 = 352 No's c. Addl. Half Module 2x4 = 4 No's</p> <p>D. HORIZONTAL BRACING : Length -768mm Section 30x30x6 'C' (thickness 1.6mm) Quantity 3 No's. per upright frame</p> <p>E. DIAGONAL BRACING : a. Length-945mm Section- 30x30x6 'C' (thickness 1.6mm) Quantity 6 No's. per upright frame</p> <p>HORIZONTAL BEAM</p> <p>A. BEAM CHANNEL : Length-2300mm Section- 85x50x1.6 mm Box Section Quantity a. Main Module-10x6 = 60 No's b. Addl.Module~88 x6 = 528 No's c. Addl. Half Module 2x6 = 12 No's</p> <p>B. LOCKING PIN : Quantity-2 No's per beam</p> <p>C. PALLET SUPPORT BAR: Length-900mm (Guided Pallet Support with Stopper) Section- 123x65x1.6 'C'</p> <p>a. Main Module-10x4 = 40 No's b. Addl.Module-88x4 = 352 No's c. Addl. Half Module 2x2 = 4 No's</p> <p>E. DECK SHEET IN STEEL: A. Length-900mm Section- 150x40x19x1 mm Quantity 14 nos per level B. Length-900mm Section 200x40x19x1 mm Quantity 1 no. per level c. Main Module-10x2 = 20 No's Quantity b. Addl.Module-88x2 = 176 No's c. Addl. Half Module 2x2 = 4 No's The deck panel shall be of 6 bend.</p> <p>Material: Material should be of high grade steel IS 5986 for Upright and IS 513D or equivalent for Decking Panel. All the components shall be thoroughly pre-treated in 8 stage pre treatment process and all the components shall be painted with epoxy powder coating and film thickness of minimum 50 microns.</p>	<p>C. ANCHOR BOLT: Length-100mm Section- M12x100 Quantity a. Main Module-10x8 = 80 No's b. Addl.Module-88x4 = 352 No's c. Addl. Half Module 2x4 = 4 No's</p> <p>D. HORIZONTAL BRACING : Length -768mm Section 30x30x6 'C' (thickness 1.6mm) Quantity 3 No's. per upright frame</p> <p>E. DIAGONAL BRACING : a. Length-945mm Section- 30x30x6 'C' (thickness 1.6mm) Quantity 6 No's. per upright frame</p> <p>HORIZONTAL BEAM</p> <p>A. BEAM CHANNEL : Length-2300mm Section- 85x50x1.6 mm Box Section Quantity a. Main Module-10x6 = 60 No's b. Addl.Module~88 x6 = 528 No's c. Addl. Half Module 2x6 = 12 No's</p> <p>B. LOCKING PIN : Quantity-2 No's per beam</p> <p>C. PALLET SUPPORT BAR: Length-900mm (Guided Pallet Support with Stopper) Section- 123x65x1.6 'C'</p> <p>a. Main Module-10x4 = 40 No's b. Addl.Module-88x4 = 352 No's c. Addl. Half Module 2x2 = 4 No's</p> <p>E. DECK SHEET IN STEEL: A. Length-900mm Section- 150x40x19x1 mm Quantity 14 nos per level B. Length-900mm Section 200x40x19x1 mm Quantity 1 no. per level d. Main Module-10x2 = 20 No's Quantity b. Addl.Module-88x2 = 176 No's c. Addl. Half Module 2x2 = 4 No's The deck panel shall be of 6 bend.</p> <p>Material: Material should be of high grade steel IS 5986 for Upright and IS 513D or equivalent for Decking Panel. All the components shall be thoroughly pre-treated in 8 stage pre treatment process and all the components shall be</p>
--	--

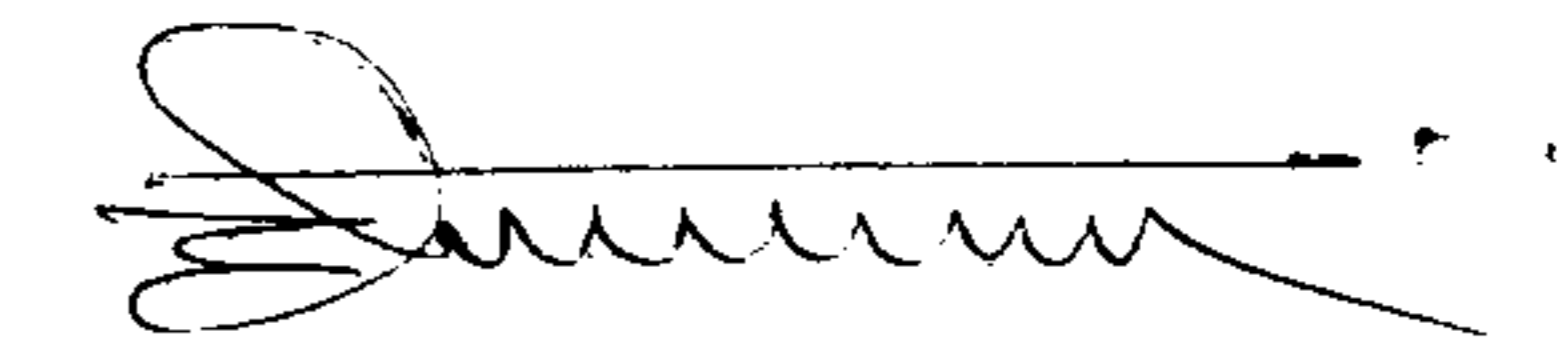
	<p>Color: Orange color for beam and base plate rest all components should be in blue color.</p>	<p>painted with epoxy powder coating and film thickness of minimum 50 microns. Color: Orange color for beam and base plate rest all components should be in blue color.</p>																																																							
<p>3.</p>	<p><u>Technical Specification for Manual Hydraulic Stacker</u></p> <ul style="list-style-type: none"> • Product Description: - Manual Hydraulic Stacker should be specially designed to lift up variety of loads in stores and warehouse. • The ergonomic UMHT [United Material Handling Technology] tiller safely protects the operator's hands while working. • Important seals, which prolong the working time of hydraulic unit with options for Nylon, Rubber wheel and PU (Poly Urethane wheels). <table border="1" data-bbox="208 1111 1123 1681"> <thead> <tr> <th>Item/Types</th> <th>Manual Hydraulic Stacker</th> <th>Manual Hydraulic Stacker</th> </tr> </thead> <tbody> <tr> <td>Frame Type</td> <td>Wrapover Base</td> <td>Wrapover Base</td> </tr> <tr> <td>Load Capacity</td> <td>1500 KG</td> <td>1500 KG</td> </tr> <tr> <td>Effective Fork Length</td> <td>900 MM</td> <td>900 MM</td> </tr> <tr> <td>Effective Fork Height</td> <td>4200 MM</td> <td>2400 MM</td> </tr> <tr> <td>Min. Fork Height</td> <td>100 MM</td> <td>100 MM</td> </tr> <tr> <td>Min. Mast Height</td> <td>2800 MM</td> <td>1900 MM</td> </tr> <tr> <td>Max. Mast Height</td> <td>4800 MM</td> <td>3200 MM</td> </tr> <tr> <td>Overall Frame Length</td> <td>1450 MM</td> <td>1450 MM</td> </tr> <tr> <td>Fork Span (Adjustable Type)</td> <td>300-560 MM</td> <td>300-560 MM</td> </tr> <tr> <td>Rear Frame Width</td> <td>825 MM</td> <td>825 MM</td> </tr> </tbody> </table> <p>Operation (manual) the operation of the equipment should be simple. The Fork is lifted by hydraulic cylinder which should be actuated by working the ram pump handle in an up and down pumping action.</p> <p style="text-align: center;">or</p> <p>Hydraulic System (Manual) the Hydraulic System consists of an Oil Tank, Pump Cylinder, Manifold Plate and Hydraulic Cylinder. The oil tank should be welded to the manifold plate.</p>	Item/Types	Manual Hydraulic Stacker	Manual Hydraulic Stacker	Frame Type	Wrapover Base	Wrapover Base	Load Capacity	1500 KG	1500 KG	Effective Fork Length	900 MM	900 MM	Effective Fork Height	4200 MM	2400 MM	Min. Fork Height	100 MM	100 MM	Min. Mast Height	2800 MM	1900 MM	Max. Mast Height	4800 MM	3200 MM	Overall Frame Length	1450 MM	1450 MM	Fork Span (Adjustable Type)	300-560 MM	300-560 MM	Rear Frame Width	825 MM	825 MM	<p><u>Technical Specification for Manual Hydraulic Stacker</u></p> <ul style="list-style-type: none"> • Product Description: - Manual Hydraulic Stacker should be specially designed to lift up variety of loads in stores and warehouse. • The ergonomic UMHT [United Material Handling Technology] tiller safely protects the operator's hands while working. • Important seals, which prolong the working time of hydraulic unit with options for Nylon, Rubber wheel and PU (Poly Urethane wheels). <table border="1" data-bbox="1123 1111 2017 1846"> <thead> <tr> <th>Item/Types</th> <th>Manual Hydraulic Stacker</th> </tr> </thead> <tbody> <tr> <td>Frame Type</td> <td>Wrapover Base</td> </tr> <tr> <td>Load Capacity</td> <td>1500 KG</td> </tr> <tr> <td>Effective Fork Length</td> <td>900 MM</td> </tr> <tr> <td>Effective Fork Height</td> <td>2400 MM</td> </tr> <tr> <td>Min. Fork Height</td> <td>100 MM</td> </tr> <tr> <td>Min. Mast Height</td> <td>1900 MM</td> </tr> <tr> <td>Max. Mast Height</td> <td>3200 MM</td> </tr> <tr> <td>Overall Frame Length</td> <td>1450 MM</td> </tr> <tr> <td>Fork Span (Adjustable Type)</td> <td>300-560 MM</td> </tr> <tr> <td>Rear Frame Width</td> <td>825 MM</td> </tr> </tbody> </table> <p>Hydraulic System (Manual) the Hydraulic System consists of an Oil Tank, Pump Cylinder, Manifold Plate and Hydraulic Cylinder. The oil tank should be welded to the manifold plate.</p>	Item/Types	Manual Hydraulic Stacker	Frame Type	Wrapover Base	Load Capacity	1500 KG	Effective Fork Length	900 MM	Effective Fork Height	2400 MM	Min. Fork Height	100 MM	Min. Mast Height	1900 MM	Max. Mast Height	3200 MM	Overall Frame Length	1450 MM	Fork Span (Adjustable Type)	300-560 MM	Rear Frame Width	825 MM
Item/Types	Manual Hydraulic Stacker	Manual Hydraulic Stacker																																																							
Frame Type	Wrapover Base	Wrapover Base																																																							
Load Capacity	1500 KG	1500 KG																																																							
Effective Fork Length	900 MM	900 MM																																																							
Effective Fork Height	4200 MM	2400 MM																																																							
Min. Fork Height	100 MM	100 MM																																																							
Min. Mast Height	2800 MM	1900 MM																																																							
Max. Mast Height	4800 MM	3200 MM																																																							
Overall Frame Length	1450 MM	1450 MM																																																							
Fork Span (Adjustable Type)	300-560 MM	300-560 MM																																																							
Rear Frame Width	825 MM	825 MM																																																							
Item/Types	Manual Hydraulic Stacker																																																								
Frame Type	Wrapover Base																																																								
Load Capacity	1500 KG																																																								
Effective Fork Length	900 MM																																																								
Effective Fork Height	2400 MM																																																								
Min. Fork Height	100 MM																																																								
Min. Mast Height	1900 MM																																																								
Max. Mast Height	3200 MM																																																								
Overall Frame Length	1450 MM																																																								
Fork Span (Adjustable Type)	300-560 MM																																																								
Rear Frame Width	825 MM																																																								
<p>4.</p>		<p style="text-align: center;"><u>Pallet</u></p> <p>The Pallets should be made of Virgin Plastic molded, with following specifications:-</p> <ol style="list-style-type: none"> 1. Dimensions: 1000x1000x150 mm 2. With load bearing capacity: 2000 Kg 3. Should meet the general Hygiene conditions 4. Suitable to handle all kinds of material Handling Equipment 5. The product should be protected from loss or gain of moisture from surrounding atmosphere. 																																																							

5	Annexure-B General terms & conditions clause-1 E-Tender shall be submitted upto 1.00 PM on dated 15.02.2013 as per schedule (col. no. 4) to the E.D. (EPM), Rajasthan Medical Services Corporation Limited, Rajasthan, Jaipur for the Rate contract Supply of Equipments & Instruments for the rate contract period 2012-14.	Annexure-B General terms & conditions clause-1 E-Tender shall be submitted upto 1.00 PM on dated 07.02.2013 as per schedule (col. no. 4) to the E.D. (EPM), Rajasthan Medical Services Corporation Limited, Rajasthan, Jaipur for the Rate contract Supply of Equipments & Instruments for the rate contract period 2012-14.
6	Annexure-A declaration form cum check list Sr. No. 28 – Verification by Deponent (Annexure-N)	Annexure-A declaration form cum check list Sr. No. 28 – Verification by Deponent (Annexure-O)

Please note that above all amendments to technical specification/ tender condition and clarification is the integral part of tender document. This corrigendum shall be signed and annexed with tender document.


Executive Director (EPM)
RMSC, Jaipur

- Copy to:-
1. M.D., RISL Yojna Bhawan, Jaipur
 2. PA to M.D., RMSC, Jaipur
 3. AGM(IT), RMSC, Jaipur
 4. Guard file.

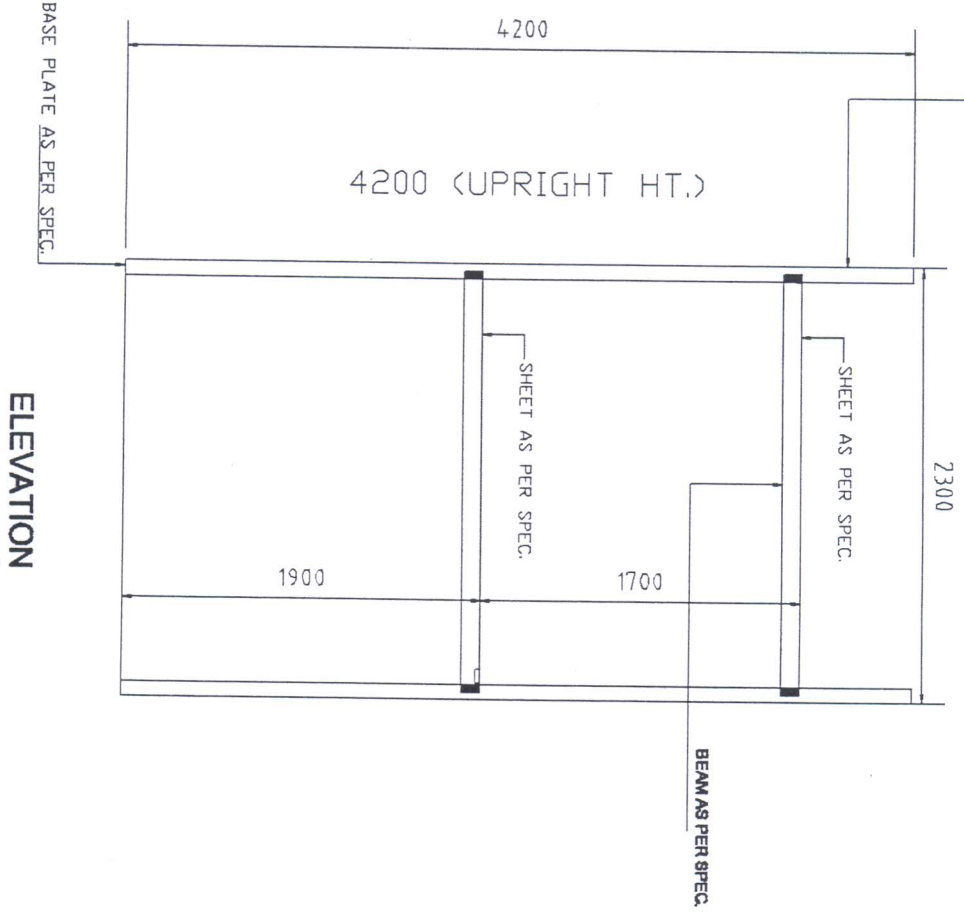

Executive Director (EPM)
RMSC, Jaipur

NOTE:- ATTACHMENT TO CORRIGENDUM NO. 221 DT. 30.1.13 UNDER NIT-14

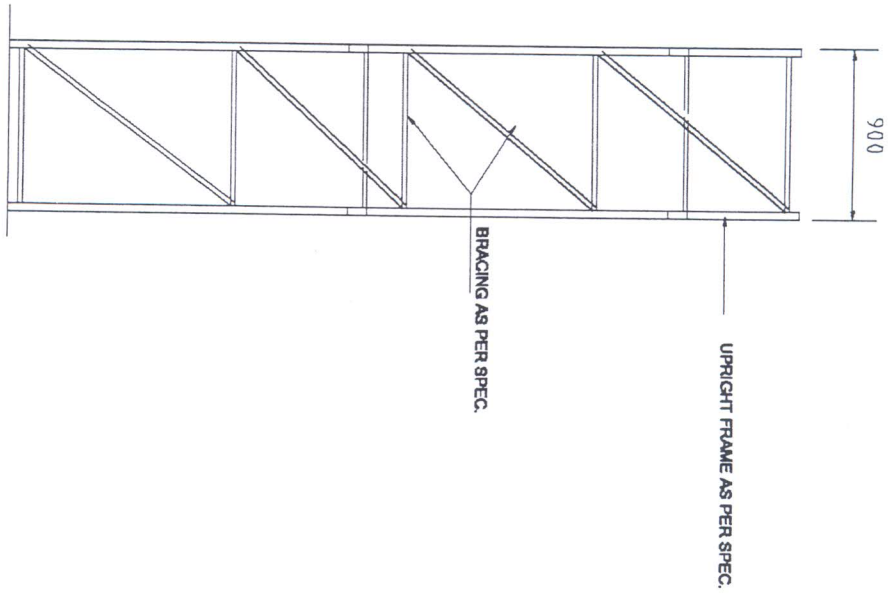
5

UPRIGHT AS PER SPEC.

HEAVY DUTY RACKING SYSTEM



ELEVATION



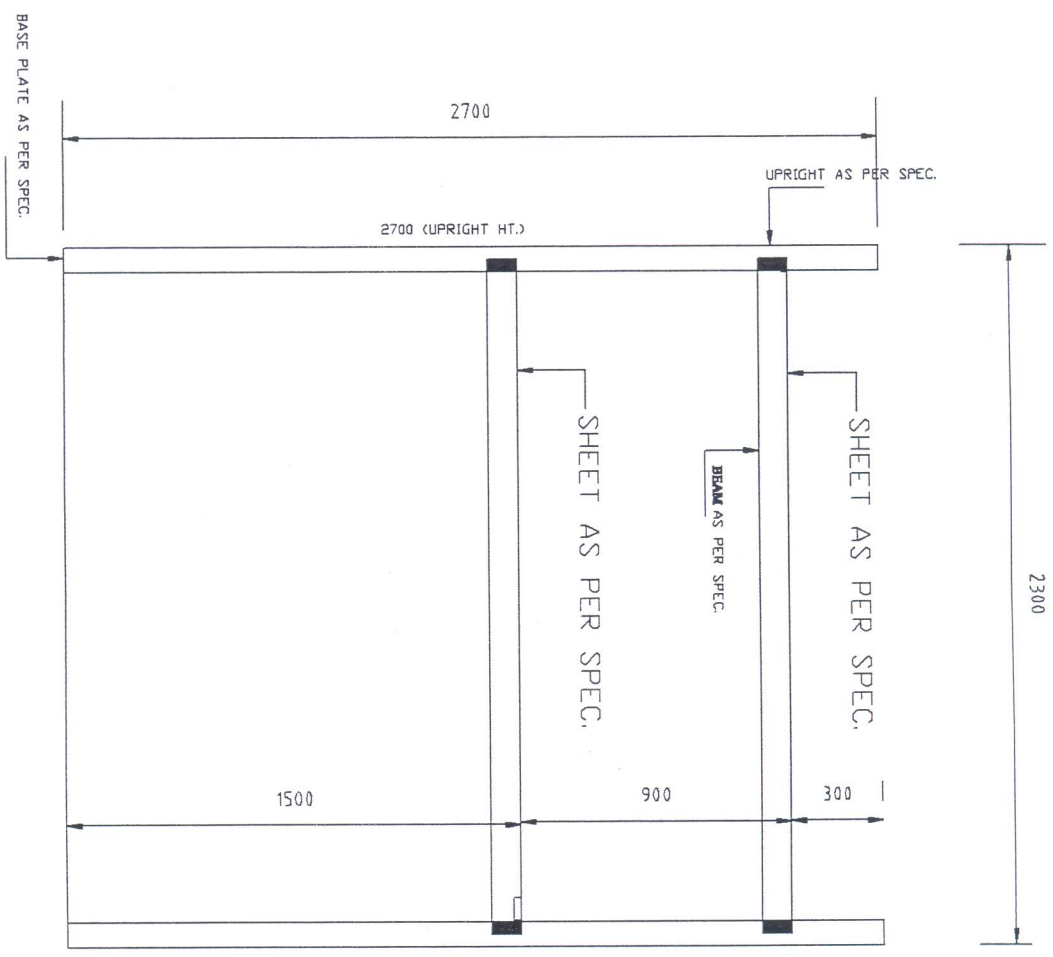
END VIEW

S *Kilgore* *Pratt*

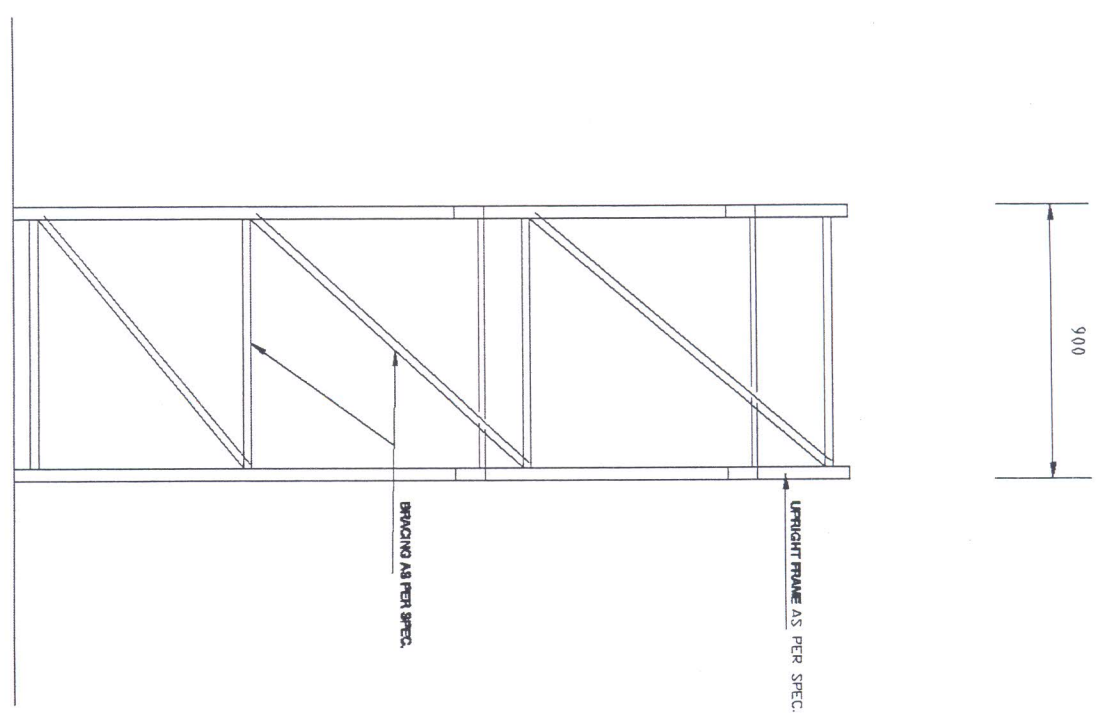
NOTE:- ATTACHMENT TO CORRIGENDUM NO. 321 DT. 30.1.13 UNDER NIT-14

54

HEAVY DUTY RACKING SYSTEM



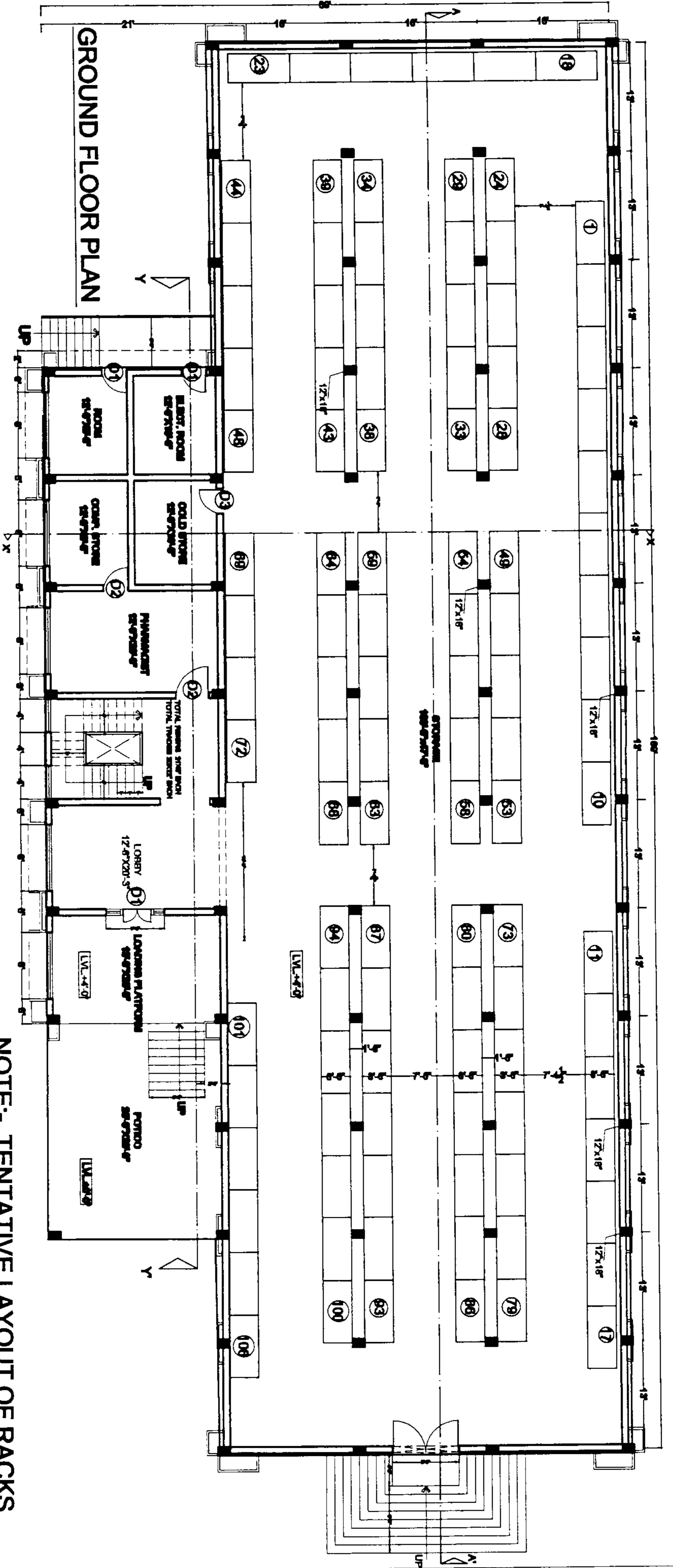
ELEVATION



END VIEW

Kalyan Prasad

NOTE - ATTACHMENT TO CORRIENDUM NO. 321 DATED 30.1.13 UNDER NIT-14



GROUND FLOOR PLAN

PROPOSED BUILDING FOR DRUG WAREHOUSE IN RAJASTHAN

NOTE:- TENTATIVE LAYOUT OF RACKS,
FINAL LAYOUT WOULD BE AS PER
THE SITE CONDITIONS

[Handwritten signatures]
Kalyan
P. S. D.