

Rajasthan Medical Services Corporation Limited, Jaipur
Gandhi Block, Swasthya Bhawan, Tilak Marg, C-Scheme, Jaipur - 302005

Ph. No. 0141-2223887, Fax : 0141-2228065

E-mail : edepmrmisc-ri@nic.in

CIN:U24232RJ2011ISGC035067

Website: www.rmssc.nic.in

No. F-8(53)RMSC/EPM/M-4/2017-18/NIB-260/ 1770

dated 17-04-18

All Principal, Medical Colleges,
All the Superintendent of Medical College & Attached Hospitals.
Director (PH/HA/IEC/AIDS/RCH)

Sub:- The Rate Contract for the Abbes/Butyro Refractometer.

Please find enclosed herewith approved firm and rates etc. in respect of Item **Abbes/Butyro Refractometer** for the rate contract ending on 30-04-2020. The Rate Contract and its terms & conditions are also available on Rajasthan Medical Services Corporation Ltd., Website www.rmssc.nic.in.

In reference to above Rate Contract No F-8(53)RMSC/EPM/M-4/2017-18/NIB-260/ 1325
Dated: 26-03-2018 the supplier has executed the agreement with RMSC, as enclose here for your information & necessary action.


Executive Director (EPM)


**Rajasthan Medical Services Corporation
Ltd, Jaipur**

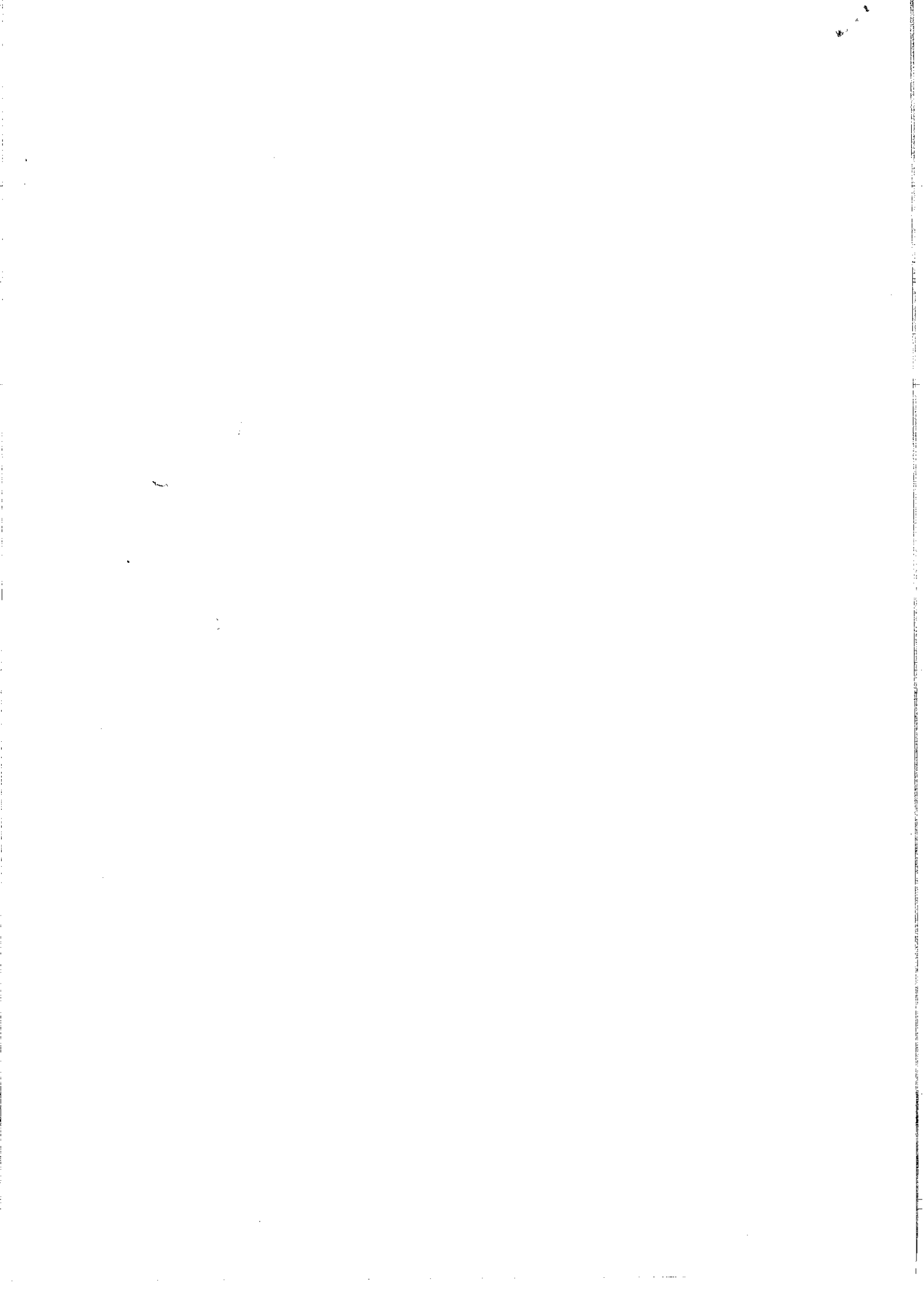
Dated:

F-8(53)RMSC/EPM/M-4/2017-18/NIB-260/

Copy forwarded to the following for information & necessary action:

1. PS to Hon'ble Health Minister, Medical & Health Deptt. Govt. of Rajasthan.
2. PS to PHS, Medical Health & FW Deptt. Rajasthan, Jaipur.
3. PA to Director, (PH)/(Aids)/(FW)/(RCH)/(IEC).
4. Project Director, NRHM.
5. Principal, Medical College, Ajmer, Bikaner, Jaipur, Jodhpur, Kota, Jhalawar & Udaipur.
6. Superintendent, SMS Hospital, Zenana Hospital, Mahila Chikitsalya, Mental Hospital, J.K. Lon Hospital, T.B & Chest Hospital, Jaipur.
7. Superintendent Associated Group of Hospital-Ajmer, M.G. Hospital, Jodhpur, Ummaid Hospital- Jodhpur, PBM Hospital-Bikaner, MBS Hospital-Kota & A.G. Hospital-Udaipur.
8. Director, Medical & Health Services (ESI), Mobile Surgical Unit, Raj. Jaipur.
9. Addl. Director, Medical & Health Services (PW)/(RH)/(Hospital Admn.)
10. Joint Director, Medical & Health Services, (Zone) Jaipur, Ajmer, Udaipur, Jodhpur, Bikaner, Kota & Bharatpur.
11. All Dy. CM&HO's.
12. AGM (IT), RMSC, Jaipur.
13. ATAGO India , Instruments Pvt. Ltd., Unit # 103 Western Edge II Opp Magathane Bus Depot Off Western Express Highway Borivali (East) Mumbai-400066 (India) Email: customerservice@atago-india.com, customerservice-del@atago-india.com
14. Guard file.


Executive Director (EPM)
**Rajasthan Medical Services Corporation
Ltd, Jaipur**



Rajasthan Medical Services Corporation Limited, Jaipur

Gandhi Block, Swasthya Bhawan, Tilak Marg, C-Scheme, Jaipur - 302005

Ph. No. 0141-2223887, Fax : 0141-2228065

CIN:U24232RJ2011ISGC035067

E-mail : edepmrm-sc-rl@nic.in
Website: www.health.rajasthan.gov.in

F-8(53)RMSC/EPM/M-4/2017-18/NIB-260/17770

Dated: 17-04-18

Order for Rate Contract

S. No.	Item	Detail
1.	Name of Equipment / Item	Abbes/Butyro Refractometer
2.	Name & Address of Firm	ATAGO India, Instruments Pvt. Ltd., Unit # 103 Western Edge IIOpp Magathane Bus Depot Off Western Express Highway/Borivali(East) Mumbai-400066(India) Email: customerservice@atago-india.com , customerservice-del@atago-india.com
3.	Brand/ Model / Make	RX-7000i
4.	Packing Unit	Each
5.	R/C No. & Validity	(R.C. No 459 / Valid upto 30.04.2020)
6.	Net Rate Per packing Unit (Rs.)	4,00,000.00(Rs. Four Lacs Only) <u>HSN Code 8421</u>
8.	RMSC Surcharge @5%	Rs. 20000.00
9.	<u>Rates for Supply to RMSC from Suppliers</u>	
	(i) New Basic Rate (In Rs.)	4,00,000.00
	(ii) IGST @ 0 % (In Rs.)	0.00
	(iii) CGST @ 9 % (In Rs.)	36000.00
	(iv) SGST @ 9 % (In Rs.)	36000.00
	(v) Approved Rate for Suppliers From RMSC {(i)+(ii)+(iii)+(iv)} (In Rs.)	4,72,000.00


[Handwritten Signature]

Rate for Supply To Consignee From RMSC

(i)	New Basic Rate (In Rs.)	4,00,000.00
(ii)	RMSC Surcharge @ 5% on (In Rs.)	20,000.00
(iii)	CGST @9% {On (i)+(ii)} (In Rs.)	37800.00
(iv)	SGST @ 9% {On (i)+(ii)} (In Rs.)	37800.00
(v)	Approved Rate for Consignee From RMSC {(i)+(ii)+(iii)+(iv)} (In Rs.)	495600.00S

11 Technical Specification of Abbes/Butyro Refractometer

1. The Refractometer should be digital, compact in design & with reliable optics.
2. RI measurement range: 1.32 to 1.70
3. BRIX measurement range: 0 to 100%
4. Temperature control: Automatic with built in Peltier Thermo Module.
5. Temperature control range with Peltier : 10°C to 75°C.
6. **Resolution (RD): up to 5th decimal or more**
7. **Accuracy (RD): up to 4th decimal or more**
8. Light source: LED lamp with average lifetime of 100,000 h
9. Data Interfaces: RS 232 port for printer connection, USB port.
10. Recording of data on system's internal memory.
11. Compliance: 21 CFR part 11
12. Automatic temperature correction.
13. The provision for setting the limit (fail & pass) for the respective test sample should be inbuilt.
14. Should be supplied with standard solution for calibration of RI & BRIX.
15. Manufacturer of Equipment should be ISO 9001 certified.
16. Equipment should be US FDA / European CE certified.
17. **Guarantee: Three years** on equipment, accessories and all peripherals / sub systems from the date of installation, which includes 2 visits and unlimited breakdown calls by service/application support engineer during the Guarantee period.
18. **CMC: CMC shall be given @ 3 % of net rate excluding GST (as applicable). The CMC may be awarded for five years (on yearly basis) after Guarantee period of three years.**
19. Installation will be done by supplier free of cost including all parts like wires, tubes, joints & attachments, small fixtures etc.


 Executive Director (EPM)
 Rajasthan Medical Services Corporation Ltd.,
 Jaipur

F-8(53)RMSC/EPM/M-4/2017-18/NIB-260/

Copy forwarded to the following for information & necessary action:

Dated:

1. P. S. to Mission Director NHM Jaipur.
2. Director, (PH)/(Aids)/(FW)/(RCH)/(TEO)/(ESI).
3. Principal, Medical College, Ajmer, Bikaner, Jaipur, Jodhpur, Kota, Jhalawar & Udaipur.
4. Superintendent Japuriya Hospital Jaipur (Associated with RUHS College of Medical Sciences, Jaipur).
5. Director, Medical & Health Services (ESI), Mobile Surgical Unit, Raj. Jaipur.
6. All P.M.O.'s.
7. All CM&HO's.
8. Executive Director (Logistics/Finance)
9. AGM (IT), RMSC, Jaipur
10. All DPC's DDW Rajasthan.
11. **ATAGO India , Instruments Pvt. Ltd.,Unit # 103 Western Edge IIOpp Magathane Bus Depot Off Western Express HighwayBorivali(East) Mumbai-400066(India) Email: customerservice@atago-india.com, customerservice-del@atago-india.com**
12. Guard file.

Executive Director (EPM)
Rajasthan Medical Services Corporation Ltd.,
Jaipur

