

Rajasthan Medical Services Corporation Ltd.

Gandhi Block, Swasthaya Bhawan, Tilak Marg, Jaipur

Ph. No. 0141-2223887, Fax No. 0141-2228065

E-Mail: rmsc@nic.in

F-8(342)RMSC/EPM/M-3/2017-18/NIB-258/

Dated: 17-04-18

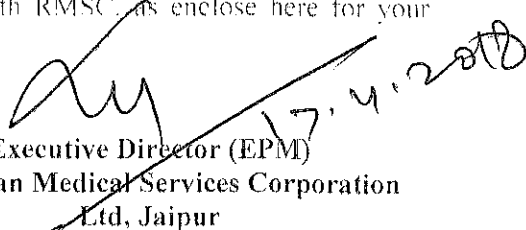
1772

All Principal, Medical Colleges,
All the Superintendent of Medical College & Attached Hospitals.
Director (PH/HA/IEC/AIDS/RCH)

Sub:- Purchase of Store of Approval of Operating Table Electric for the rate contract and supply, R.C. period 2017-18 ending on 30.4.2020.

Please find enclosed herewith approved firm and rates etc. in respect of Item Operating Table Electric or the rate contract period 2017-18 ending on 30.4.2020. The Rate Contract and its terms & conditions are also available on Rajasthan Medical Services Corporation Ltd., Website www.rmsc.nic.in.

In reference to above Rate Contract No. F-8(342)RMSC/EPM/M-3/2017-18/NIB-258/.....
Dated:the supplier has executed the agreement with RMSC as enclose here for your information & necessary action.

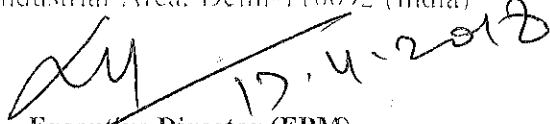

Executive Director (EPM)
Rajasthan Medical Services Corporation
Ltd, Jaipur

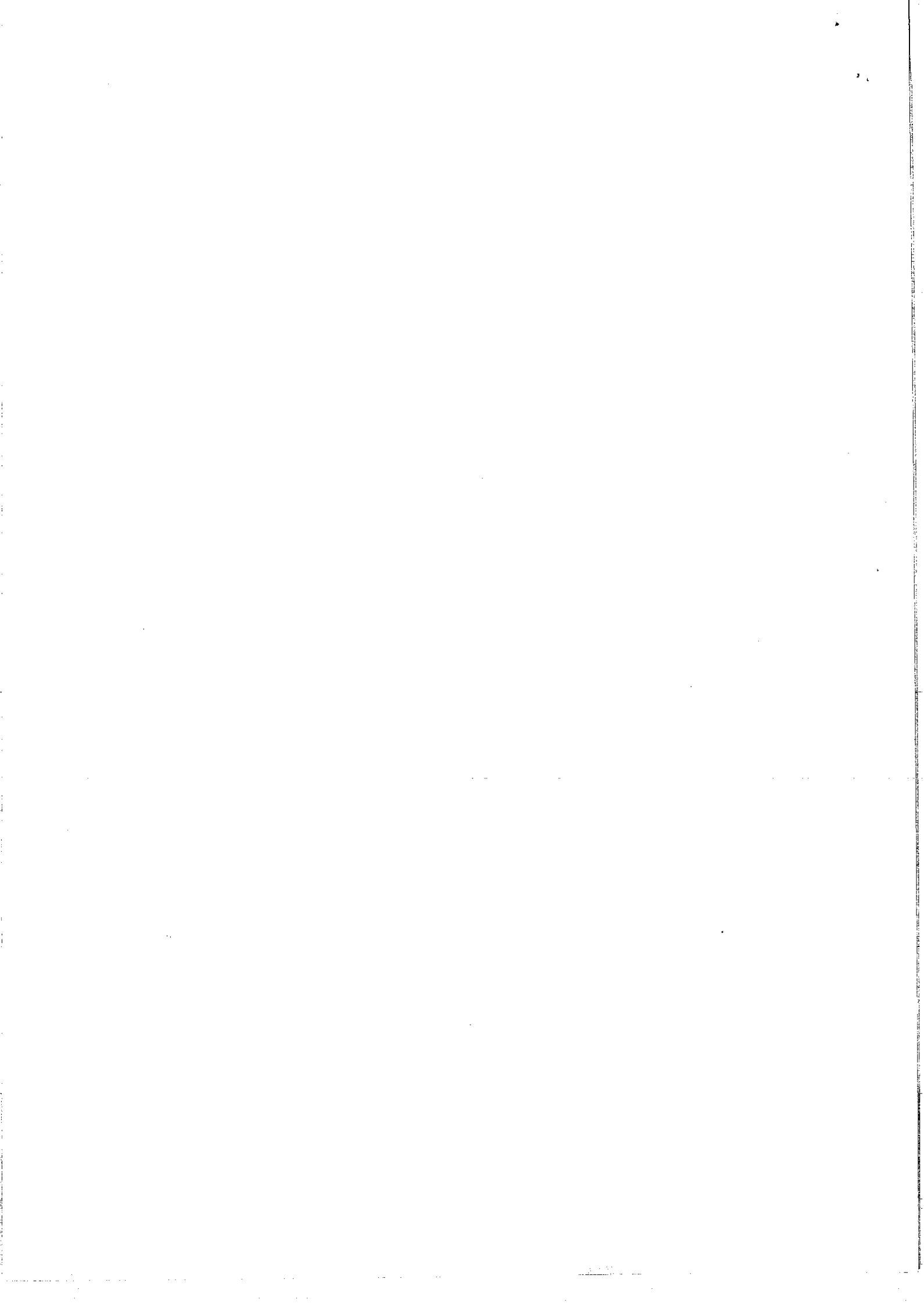
No. F-8(342)RMSC/EPM/M-3/2017-18/NIB-258

Dated:

Copy forwarded to the following for information & necessary action:

1. PS to Hon'ble Health Minister, Medical & Health Deptt. Govt. of Rajasthan.
2. PS to PHS, Medical Health & FW Deptt. Rajasthan, Jaipur.
3. PA to Director; (PH)/(Aids)/(FW)/(RCH)/(IEC).
4. Project Director, NRHM.
5. Principal, Medical College, Ajmer, Bikaner, Jaipur, Jodhpur, Kota, Jhalawar & Udaipur.
6. Superintendent, SMS Hospital, Zanana Hospital, Mahila Chikitsalya, Mental Hospital, J.K. Lon Hospital, T.B & Chest Hospital, Jaipur.
7. Superintendent Associated Group of Hospital-Ajmer, M.G. Hospital, Jodhpur, Ummaid Hospital-Jodhpur, PBM Hospital-Bikaner, MBS Hospital-Kota & A.G. Hospital-Udaipur.
8. Director, Medical & Health Services (ESI), Mobile Surgical Unit, Raj. Jaipur.
9. Addl. Director, Medical & Health Services (PW)/(RH)/(Hospital Admn.)
10. Joint Director, Medical & Health Services, (Zone) Jaipur, Ajmer, Udaipur, Jodhpur, Bikaner, Kota & Bharatpur.
11. All Dy. CM&HO's.
12. AGM (IT), RMSC, Jaipur.
13. M/s United Surgical Industries, 445, F.I.E. Patparganj Industrial Area, Delhi-110092 (India)
Email: info@unisurg.com
14. Guard file.


Executive Director (EPM)
Rajasthan Medical Services Corporation
Ltd, Jaipur





Rajasthan Medical Services Corporation Limited, Jaipur

Gandhi Block, Swasthya Bhawan, Tilak Marg, C-Scheme, Jaipur - 302005

Ph. No. 0141-2223887, Fax : 0141-2228065

E-mail : edepmrmisc-rj@nic.in

CIN:U24232RJ2011SGC035067


Website: www.rmssc.health.rajasthan.gov.in

No. F-8(342)RMSC/EPM/M-3/2017-18/NIB-258/1772 Dated: 17-04-18

Rate Contract

S.N.	Item	Detail
1.	Name of Equipment / Item	Operating Table Electric
2.	Name & Address of Firm	M/s United Surgical Industries, 445, F.I.E. Patparganj Industrial Area, Delhi-110092 (India) Email: info@unisurg.com
3.	Brand/ Model / Make	United Surgical
4.	HSN Code	
5.	Packing Unit	Each
6.	R/C No. & Validity	(R.C. No-455) valid up to 30.4.2020
7.	Net Rate Per packing Unit (Rs.)	1,60,000
8.	Taxes	GST As applicable
9.	RMSC Surcharges @ 5%	As applicable
10.	Rates for Supply to RMSC from Suppliers	
	(i) New Basic Rate (In Rs.)	1,60,000
	(ii) IGST (In Rs.) 18 %	28800.00
	(iii) CGST @% (In Rs.)	0.00
	(iv) SGST @% (In Rs.)	0.00
	(v) Approved Rate For Supplier To RMSC {(i)+(ii)+(iii)+(iv)} (In Rs.)	188800.00
11.	Rate For Supply to Consignee From RMSC	
	(i) New Basic Rate (In Rs.)	160000.00
	(ii) RMSC Surcharge @ 5 % On (i) (In Rs.)	8000.00
	(iii) CGST @ 9% { On (i)+(ii)} (In Rs.)	15120.00
	(iv) SGST @ 9% { On (i)+(ii)} (In Rs.)	15120.00
	(v) Approved Rate For Consignee from RMSC {(i)+(ii)+(iii)+(iv)} (In Rs.)	198240.00
	Technical Specifications of Operating Table Electric	
	<ol style="list-style-type: none"> The operating table top should be divided into four sections: head plate, Back plate, Seat Plate and Leg plate. The table should be electrically hand operated by cabled remote control. Entire table frame should be made of stainless steel sheet metal, thickness should be 2mm or more for strength. 8mm or more radio translucent table top for Clear imaging and high strength. Should have enhanced weight bearing casters fitted with ball bearing. Table should have a stable braking position with single lever foot operated brake pedal. Base & Column cover should be made of Stainless Steel platform with SS 304 Grade 1mm thickness cover which should be resistant to breakage and infection. Should have provision for X ray cassette inserted from the head end up to till pelvis section. Mattress should be 5 – 7 cm thick, antibacterial, antiseptic, latex free, fluid proof. Stainless steel side rails with clamps accepts all standard accessories. Measurements (Approx) : <ol style="list-style-type: none"> Length of the table at least 1830 mm. Width of the table at least 500 mm without side rails. 	

- C. Height : 680mm to 1000mm (tolerance \pm 50mm).
 D. Trendelenburg / Reverse Trendelenburg : 20-30 degree
 E. Lateral Tilt : 15 degree
 F. Back Plate Adjustable.
 G. Leg Plate : Divided and Adjustable
 H. Head Section: Mechanical Adjustable
 I. Safe working load 150 \pm 10 kg.
11. **Accessories:**
 A. 1 Set Mattress for the complete table top in sections
 B. 2 Nos. padded arm rest with straps with clamps.
 C. 2 Nos. padded shoulder supports with clamps.
 D. 2 Nos. padded knee crutches with clamps.
 E. 2 Nos. padded Lateral support with clamp
 F. 2 Nos. sliding cassette trays with rod.
 G. 1 Pair wrist strap.
 H. 1 No. Anesthetic screen with clamp (L- shaped)
 I. 1 No. IV pole, telescopic.
12. **Power Supply:** Power input; 220-240V/50 Hz AC single phase power supply. In built battery backup of at least 30 minutes should be provided.
13. **Standards & Safety :**
 Product should be CE certified (Valid documentation should be submitted in technical bid).
14. **Guarantee:** Two years on equipment from the date of installation.
15. **CMC:** CMC will be given @ 5 % plus GST (as applicable) and yearly escalation of 5 % on last year's CMC price. The CMC may be awarded for five years (on yearly basis) after completion of Guarantee period of two years.
16. The company should submit technical compliance sheet as per technical specifications mentioning the make & model of quoted item along with catalogue in the Technical bid .
17. Installation will be done by supplier free of cost.
18. The service engineer should be based in Rajasthan.
19. Demonstration of equipment is must for technical approval.


 17.4.2018
 Executive Director (EPM)
 RMSC, Jaipur

No. F-8(342)RMSC/EPM/M-3/2017-18/NIB-258/

Dated:

Copy forwarded to the following for information & necessary action:

1. P.S. to Mission Director NHM Jaipur.
2. Director, (PH)/(Aids)/(FW)/(RCH)/(IEC)/(ESI).
3. Principal, Medical College, Ajmer, Bikaner, Jaipur, Jodhpur, Kota, Jhalawar & Udaipur.
4. Superintendent Jaipuria Hospital Jaipur (Associated with RUHS College of Medical Sciences, Jaipur).
5. Director, Medical & Health Services (ESI), Mobile Surgical Unit, Raj, Jaipur.
6. All P.M.O.'s.
7. All CM&HO's.
8. Executive Director (Logistics/Finance).
9. AGM (IT), RMSC, Jaipur.
10. All DPC's DDW Rajasthan.
11. M/s United Surgical Industries. 445, F.I.E. Patparganj Industrial Area, Delhi-110092 (India) Email: info@unisurg.com
12. Guard file.


 17.4.2018
 Executive Director (EPM)
 RMSC, Jaipur