

Rajasthan Medical Services Corporation Limited, Jaipur
Gandhi Block, Swasthya Bhawan, Tilak Marg, C-Scheme, Jaipur - 302005

Ph. No. 0141-2223887, Fax : 0141-2228065

CIN:U24232RJ2011SGC035067

E-mail : edepmrmisc-rj@nic.in

Website: http://rmisc.health.rajasthan.gov.in

No. F-8() RMSC/EPM/M-2/18-19/NIB-247/ 1293

Dated: 23/03/18

Rate Contract and Price Details

| S.N. | Item | Detail |
|------|---|---|
| 1 | Name of Equipment / Item | Single Puncture Laparoscope for Laparoscopic Sterilization with CO2 Insufflator&Cold Light Source |
| 2 | Name & Address of Firm | M/s Vijay Sales, B.O. L-20, Lalwani Tower, Hamidia Road, Bhopal(M.P.)-462001 E-Mail:- vijaysalesvds@gmail.com |
| 3 | Brand/ Model / Make | Promis Model |
| 4 | Packing Unit | Each |
| 5 | R/C No. & Validity | R.C. No. 432 (Valid Upto 31.03.2020) |
| 6 | Rates for supply to RMSC from Suppliers | |
| | (i) New Basic Rate (in Rs.) | 6,00,000.00 |
| | (ii) IGST @ 12% (in Rs.) | 72,000.00 |
| | (iii) CGST (in Rs.) | 0 |
| | (iv) SGST (in Rs.) | 6,72,000.00 |
| | (v) Approved Rate From Supplier To RMSC {(i)+(ii)+(iii)+(iv) (in Rs.) | |
| 7 | Rate For Supply to Consignee From RMSC | |
| | (i) New Basic Rate (in Rs.) | 6,00,000.00 |
| | (ii) RMSC Surcharge@5% On (i) (in Rs.) | 30,000.00 |
| | (iii) CGST@ 6 % { On (i)+(ii) } (in Rs.) | 37,800.00 |
| | (iv) SGST@ 6 % { On (i)+(ii) } (in Rs.) | 37,800.00 |
| | (v) Approved Rate For Consignee From RMSC {(i)+(ii)+(iii)+(iv) (in Rs.) | 7,05,600.00 |
| 8 | <u>Technical Specifications of Single Puncture Laparoscope for Laparoscopic Sterilization with CO2 Insufflator&Cold Light Source</u> | |

dh



| S.N. | Specification | Qty. |
|------|---|---------------------------------------|
| 1 | Telescope: Telescope 0 degree with parallel/straight eye piece, 10 to 12 mm diameter. Should have 6 mm instrument channel built-in ring applicator Working length of 270-275 mm/10mm 0 degree telescope. Fibre optic light transmission incorporated, should be compatible with the commonly available light cables (necessary adaptors should be provided) Can be sterilized by autoclaving, gluteraldehyde solutions and formalin chamber. | 1 |
| 2 | Trocar & Cannula: Cannula size +1 mm more than the telescope diameter; should have an automatic valve and stopcock for insufflations. (Compatible with supplied telescope). Trocar should have pyramidal tip. Tip should be sharp enough but should not injure the viscera. The length of the Trocar should be 175 mm±10 mm and the length of the cannula should be 100-110 mm. (Intra abdominal part) | 2 |
| 3 | Ring Applicator: Ring applicator for use with parallel/straight eyepiece telescope compatible with the above telescope. Capable of loading two silastic rings. The ring applicator has to be fully dismantable into different parts like prone, inner tube, outer tube, knurled ring etc. | 3 |
| 4 | Cone: Suitable cones for loading rings to the above applicator made of Teflon / silicon / SS 317 grade | 5 |
| 5 | Slide/guide: Suitable slide/guide for loading rings to the above applicator. | 10 |
| 6 | Veress Needle: Veress Needle with spring loaded blunt stylet with luer lock and length of 10 cm | 3 |
| 7 | Veress Needle : Veress Needle with spring loaded blunt stylet with luer lock and length of 15 cm | 3 |
| 8 | Essential Spares : (i) Spare washers: Spare washers for trocar , Cannula and automatic valve (ii) Kits for cleaning: Trocar Brush, Cannula Brush, Silicon Oil 50ml, Special lubricant for stopcock & telescope lens cleaner. (iii) Spare parts: Spring of ring applicator, finger ring (thumb) for ring applicator, knurled screw for ring applicator, inner sheath of ring applicator, tension rod with grasper (prone insert) for ring applicator, adaptor for fiber optic light cable for telescope, stopcock for cannula gas inlet, spring cap for stopcock (iii) Manuals: Operational & service manuals | 10 each 2 each 2 each 1 each |
| 9 | Supplier should provide a plastic storage brief case with foaming inside for laparoscope Telescope and all hand instruments and accessories for storage & transportation. | 1 |
| 10 | Environment : Telescope should be specified for operation up to 45° C and 100% relative humidity | Conformity |

| | | |
|----|---|--------|
| 11 | <p>Electronic CO₂ insufflators with pin index connection. Should have an adjustable flow rate of 0 to 20 ltr. Per minute and a pressure range adjustable between 0-30 mm Hg. Pressure and flow rate should be display on the front panel Provided with silicon autoclavable tubing with luer attachment. Instrument should work on a supply of 180-240 V. with a frequency of 50 Hz single phase. Fit for purpose. The unit should be comply with relevant IEC safety standards.</p> <p>Automatic gas release system for constant monitoring of intra abdominal pressure and checking over pressure with automatic back release of CO₂ gas within 5 seconds should include 1 pack/10 filter for CO₂ gas.</p> <ol style="list-style-type: none"> 1. The machine should give an audible alarm signal in case of wrongly placed veress pneumoperitonium needle and sudden block in the CO₂ flow from machine 2. The insufflator should also give audible alarm in case of overpressure and release of it automatically 3. Both the preset value and actual value for pressure and flow should be displayed at the same time on the front panel of the machine | 1 |
| 12 | High Pressure hose: High Pressure hose suitable to connect the insufflators with pin indexed CO ₂ cylinder. | 1 |
| 13 | Wrench kit: Suitable for connecting the insufflators to CO ₂ cylinder | 1 |
| 14 | Carbon Dioxide Bottle (cylinder): 5 Kg. or equivalent Capacity Carbon Dioxide bottle with pin index connection. The unit should automatically display status of the CO ₂ conditioning by it electronic Bar Graph / Digital display on the front panel of the insufflator. The unit should have inbuilt pressure regulator to detect high & low pressure of CO ₂ gas automatically at the input. | 4 |
| 15 | <p>Cold Light Sources: LED Light source with one / two light outlets, having power more than 100 Watts, and average LED lamp life of minimum 40000 hrs. Electrical Safety Certification IEC- 601-1.</p> <p>Rechargeable Handy LED Back Up light source compatible with SP laparoscope is also provided. Handy LED battery light source (Rechargeable with Charger) which can be directly mounted on to the laparoscope Telescope without any delay in case of break down with Main light source type. The unit should comply with relevant IEC safety standards.</p> | 1 1 |
| 16 | Fibre Optic Light cable: 4.5-10.0 mm in diameter. 250-300cm in length compatible with the cold light source and can be fitted the commonly available telescope (necessary adaptors may be provided) | 1 |
| 17 | UPS : UPS-1.0 KVA with one hour backup time, good quality, ISI/CE approved | 1 |
| 18 | <p>Essential Parts:</p> <p>(i) Mains cord: Compatible with insufflators and cold light source</p> | 2 |
| | | 1 each |

Handwritten signature



| | | |
|----|--|---|
| | (ii) Manuals: Operation & service manual (for insufflators & Light source) | |
| 19 | Formalin Chamber (for Sterilization of Laparoscope) : Dimensions of Formalin chambers 65 cm (± 10 cm) X 20 cm (± 2 cm) X 20 cm (± 2 cm) with three tray made of white Opaque Acrylic | 1 |
| 20 | Tray for sterilization of Laparoscopes: Dimensions of outer sterilization box 70cm ± 10 cm x 20 cm ± 5 cm x 15 cm ± 2 cm (Volumetric capacity 10 litre ± 2 litre) and the inner tray with holes to keep the instrument in the solution. (Which is to be kept in outer box). The material should be of S.S. material. | 2 |
| 21 | Compatibility & Core items: The core Laparoscope items such as Telescope , Trocars & Cannula, Ring Applicator, Veress Needle CO2 Insufflators, Light Source and Fiber Optic light Cable, camera etc should be from single manufacturer for system compatibility. Item like formalin chamber, cleaning kit, briefcase, tray for sterlization, ring applicator, UPS, LED Monitor, etc may be from different manufacturer but should be compatible with core item. | |
| 22 | Core items/products should be US FDA/European CE and comply to mentioned safety standard in specifications. | |
| 23 | Guarantee: Three years on equipment from the date of installation. | |
| 24 | CMC: CMC will be given @ 3 % of net rate excluding GST (as applicable). The CMC may be awarded for five years (on yearly basis) after completion of Guarantee period of three years. | |
| 25 | Rates of Consumable/spare parts: Rates of consumable and spare parts as per requirement of the equipment should be provided by bidder in BOQ. | |
| 26 | Installation will be done by supplier free of cost. | |
| 27 | The service engineer should be based in Rajasthan. | |
| 28 | Demonstration of Equipment is must for final approval. | |
| 29 | The company should mention the make & model name/number of the quoted equipment and submit the technical brochure of the quoted model in the Technical bid along with compliance sheet as per technical specifications. | |
| 30 | Firm should mention all the pre-installation requirements in technical bid. | |

sd
Executive Director (EPM)
RMSC, Jaipur
Dated: 23-03-18

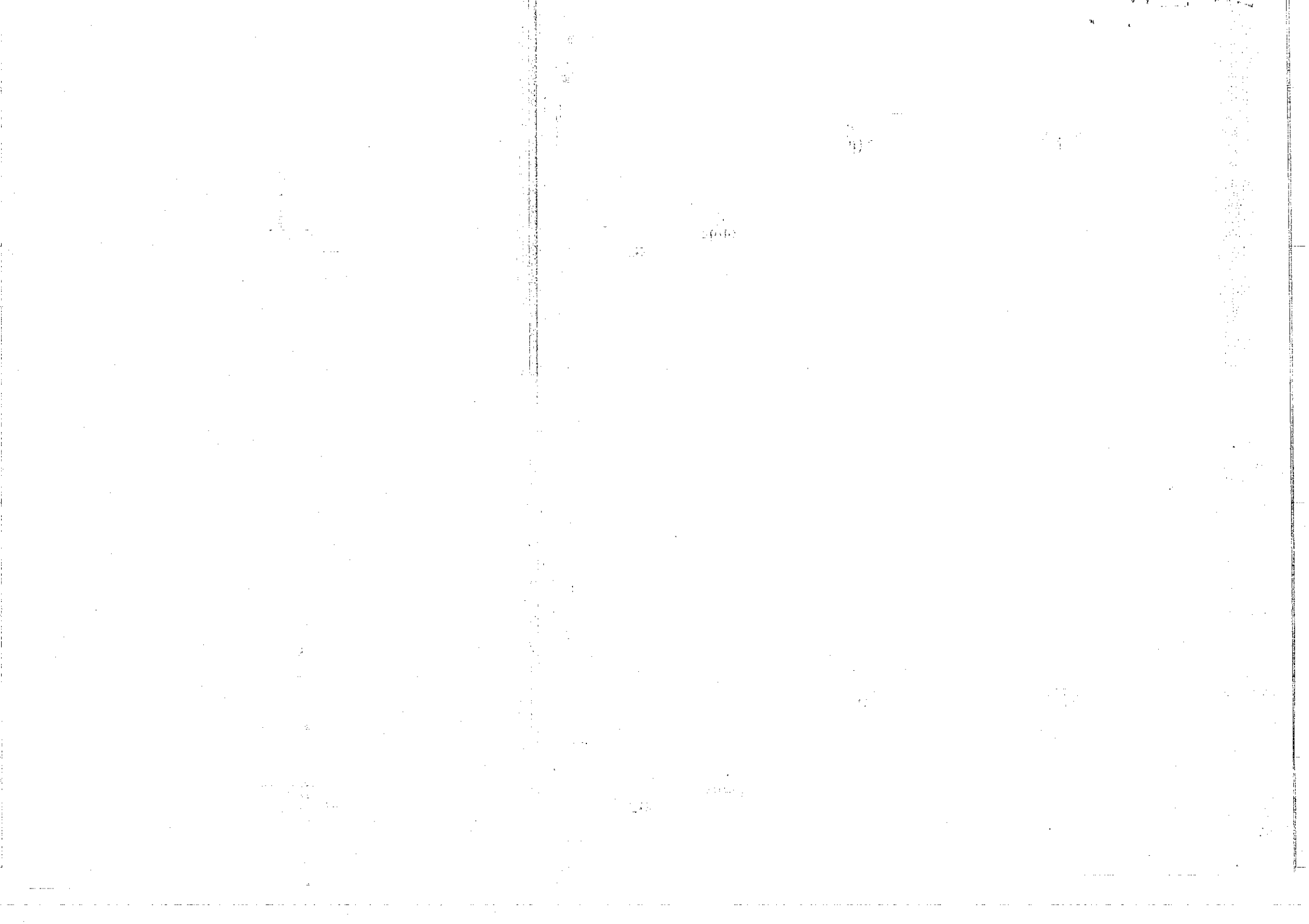
No. F-8() RMSC/EPM/M-2/18-19/NIB-247/ 1293

Copy forwarded to the following for information & necessary action:

1. P.S. to Mission Director NHM Jaipur.
2. Director, (PH)/(Aids)/(FW)/(RCH)/(IEC)/(ESI).
3. Principal, Medical College, Ajmer, Bikaner, Jaipur, Jodhpur, Kota, Jhalawar & Udaipur.

4. Superintendent Jaipuriya Hospital Jaipur (Associated with RUHS College of Medical Scinces, Jaipur).
5. Director, Medical & Health Services (ESI), Mobile Surgical Unit, Raj. Jaipur.
6. All P.M.O.'s.
7. All CM&HO's.
8. Executive Director (Logistics/Finance)
9. AGM (IT), RMSC, Jaipur
10. All DPC's DDW Rajasthan.
11. BME (R&M), RMSC, Jaipur.
12. M/s Vijay Sales, B.O. L-20, Lalwani Tower, Hamidia Road, Bhopal(M.P.)-462001 E-Mail:- vijaysalesvds@gmail.com.
13. Guard file.

Executive Director (EPM)
RMSC, Jaipur



Rajasthan Medical Services Corporation Limited, Jaipur

Ph. No. 0141-2223887, Fax : 0141-2228065
CIN:U24232RJ2011SGC035067

E-mail : edepmrmssc-rl@nic.in
Website: www.rmssc.nic.in

No. F-8() RMSC/EPM/M-2/18-19/NIB-247/ 1292

Dated: 23-03-18

All Principal, Medical Colleges,

All the Superintendent of Medical College & Attached Hospitals.
Director (PH/HA/IEC/AIDS/RCH)

Sub:- Approval/Purchase of Store Item Single Puncture Laparoscope for Laparoscopic Sterilization with CO2 Insufflator&Cold Light Source, for the rate contract ending on 31.03.2020

Please find enclosed herewith approved firm and rates etc. in respect of Item **Single Puncture Laparoscope for Laparoscopic Sterilization with CO2 Insufflator&Cold Light Source** for the rate contract ending on 31.03.2020 The Rate Contract and its terms & conditions are also available on Rajasthan Medical Services Corporation Ltd., Website www.rmssc.nic.in.

In reference to above Rate Contract No. F-8()RMSC/EPM/M-2/18-19/NIB-247/...**1292**
Dated: **23.03.18** the supplier has executed the agreement with RMSC, as enclosed here for your information & necessary action.

Executive Director (EPM)
RMSCCL, Jaipur

No. F-8() RMSC/EPM/M-2/18-19/NIB-247/1292

Dated: 23-03-18

Copy forwarded to the following for information & necessary action:

1. P.S. to Hon'ble Health Minister, Medical & Health Deptt. Govt. of Rajasthan.
2. P.S. to PHS, Medical Health & FW Deptt. Rajasthan, Jaipur.
3. P.S. to Mission Director NHM Jaipur.
4. Director, (PH)/(Aids)/(FW)/(RCH)/(IEC)/(ESI).
5. Principal, Medical College, Ajmer, Bikaner, Jaipur, Jodhpur, Kota, Jhalawar & Udaipur.
6. Principal R.U.H.S. College of Dental Science Jaipur.
7. Principal, RUHS College of Medical Sciences, Jaipur.
8. Superintendent Japuriya Hospital Jaipur.(Associated with RUHS College of Medical Sciences, Jaipur).
9. Superintendent, SMS Hospital, Zenana Hospital, Mahila Chikitsalya, Mental Hospital, J.K. Lon Hospital, T.B & Chest Hospital, Jaipur.
10. Superintendent Associated Group of Hospital-Ajmer, M.G. Hospital, Jodhpur, Ummaid Hospital- Jodhpur, PBM Hospital-Bikaner, MBS Hospital-Kota & A.G. Hospital-Udaipur.
11. Director, Medical & Health Services (ESI), Mobile Surgical Unit, Raj. Jaipur.
12. Addl. Director, Medical & Health Services (PW)/(RH)/(Hospital Admn.)
13. Joint Director, Medical & Health Services, (Zone) Jaipur, Ajmer, Udaipur, Jodhpur, Bikaner, Kota & Bharatpur.
14. All P.M.O.'s.
15. All CM&HO's.
16. All Dy. CM&HO's.
17. Executive Director (Logistics/Finance)
18. AGM (IT), RMSC, Jaipur
19. All DPC's DDW Rajasthan.
20. M/s Vijay Sales, B.O. I-20, Lalwani Tower, Hamidia Road, Bhopal(M.P.)-462001
21. Guard file.

Executive Director (EPM)
RMSCCL, Jaipur

